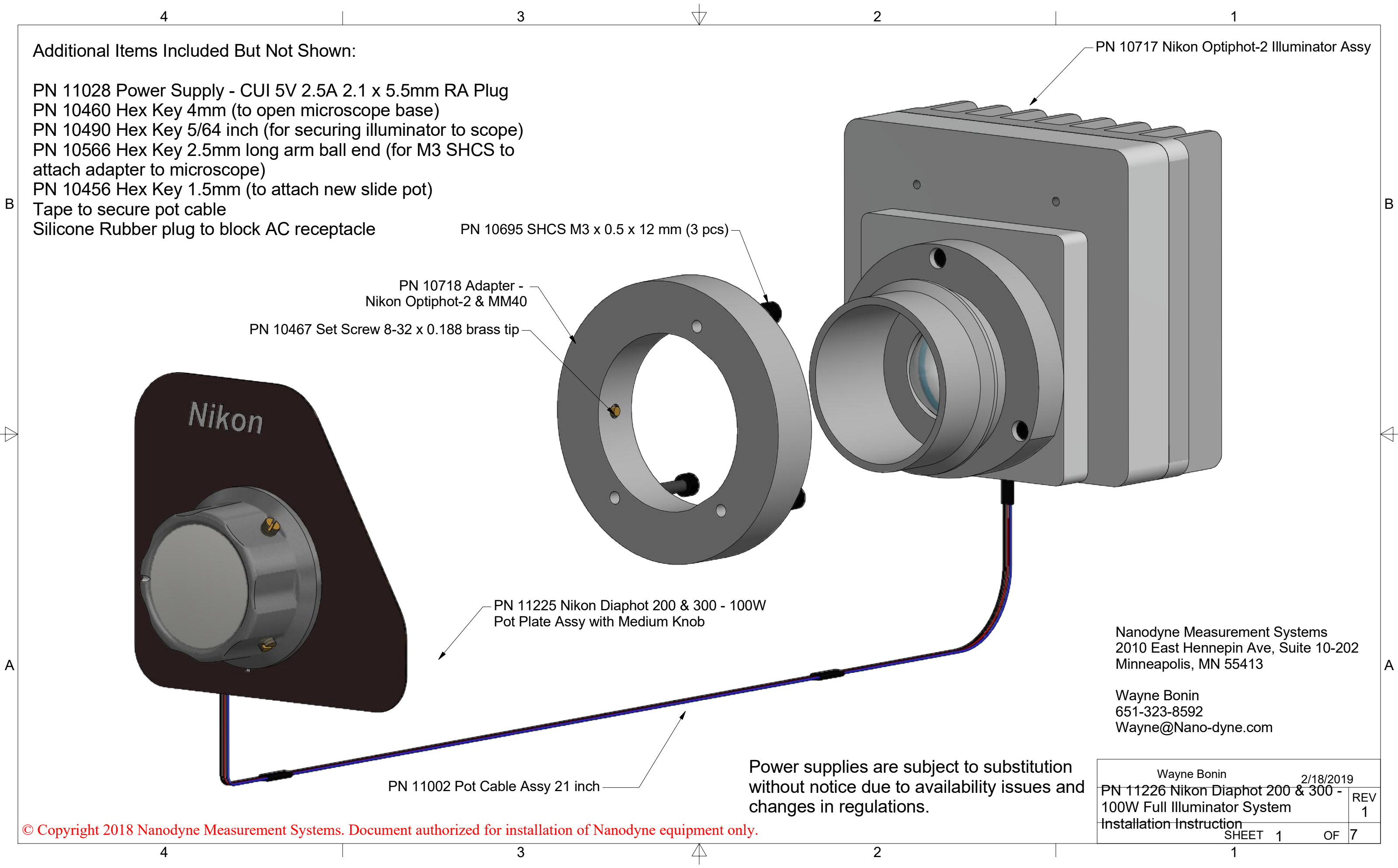


Additional Items Included But Not Shown:

- PN 11028 Power Supply - CUI 5V 2.5A 2.1 x 5.5mm RA Plug
- PN 10460 Hex Key 4mm (to open microscope base)
- PN 10490 Hex Key 5/64 inch (for securing illuminator to scope)
- PN 10566 Hex Key 2.5mm long arm ball end (for M3 SHCS to attach adapter to microscope)
- PN 10456 Hex Key 1.5mm (to attach new slide pot)
- Tape to secure pot cable
- Silicone Rubber plug to block AC receptacle



PN 10717 Nikon Optiphot-2 Illuminator Assy

PN 10695 SHCS M3 x 0.5 x 12 mm (3 pcs)

PN 10718 Adapter - Nikon Optiphot-2 & MM40

PN 10467 Set Screw 8-32 x 0.188 brass tip

PN 11225 Nikon Diaphot 200 & 300 - 100W Pot Plate Assy with Medium Knob

PN 11002 Pot Cable Assy 21 inch

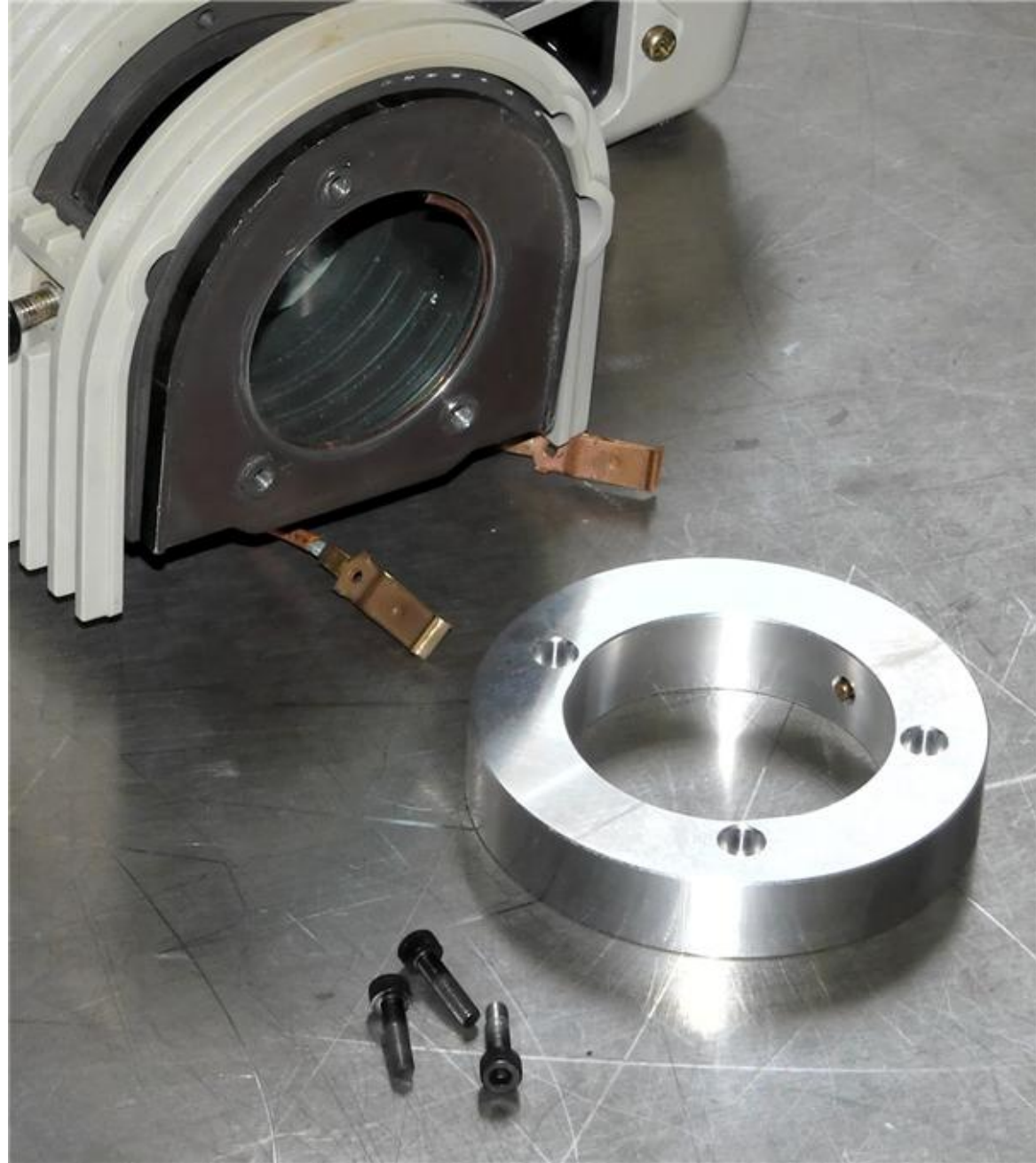
Nanodyne Measurement Systems  
2010 East Hennepin Ave, Suite 10-202  
Minneapolis, MN 55413

Wayne Bonin  
651-323-8592  
Wayne@Nano-dyne.com

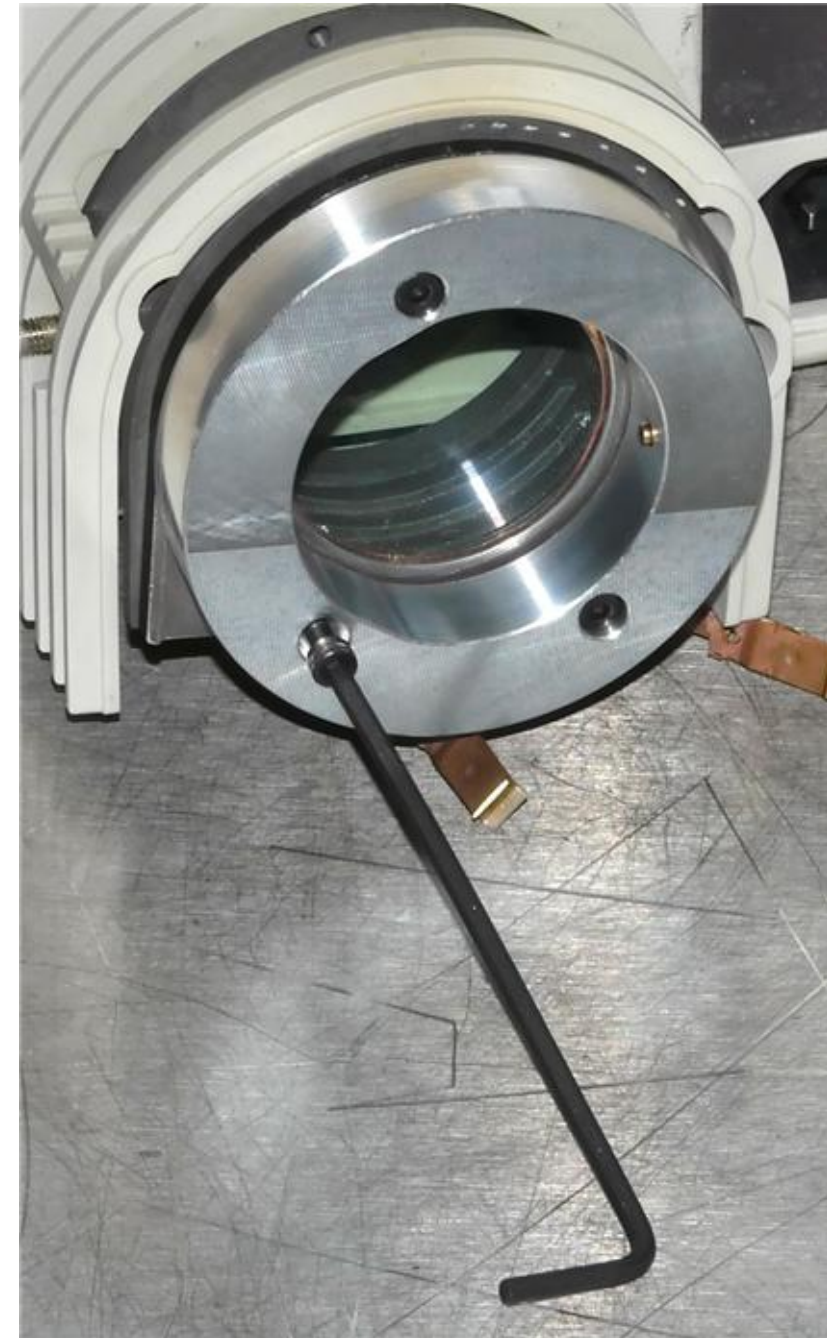
Power supplies are subject to substitution without notice due to availability issues and changes in regulations.

Wayne Bonin		2/18/2019	
PN 11226 Nikon Diaphot 200 & 300 - 100W Full Illuminator System			REV 1
Installation Instruction			
SHEET 1	OF 7		

Nikon Diaphot 200/300 Illuminator Installation step 1 - attach adapter ring.



1. Adapter ring and mounting screws ready to install.



2. Attach the adapter ring using the three 12mm long M3 screws, using the 2.5mm hex key. Be sure all three screws are started and screwed in but still loose, before tightening them, to prevent binding.

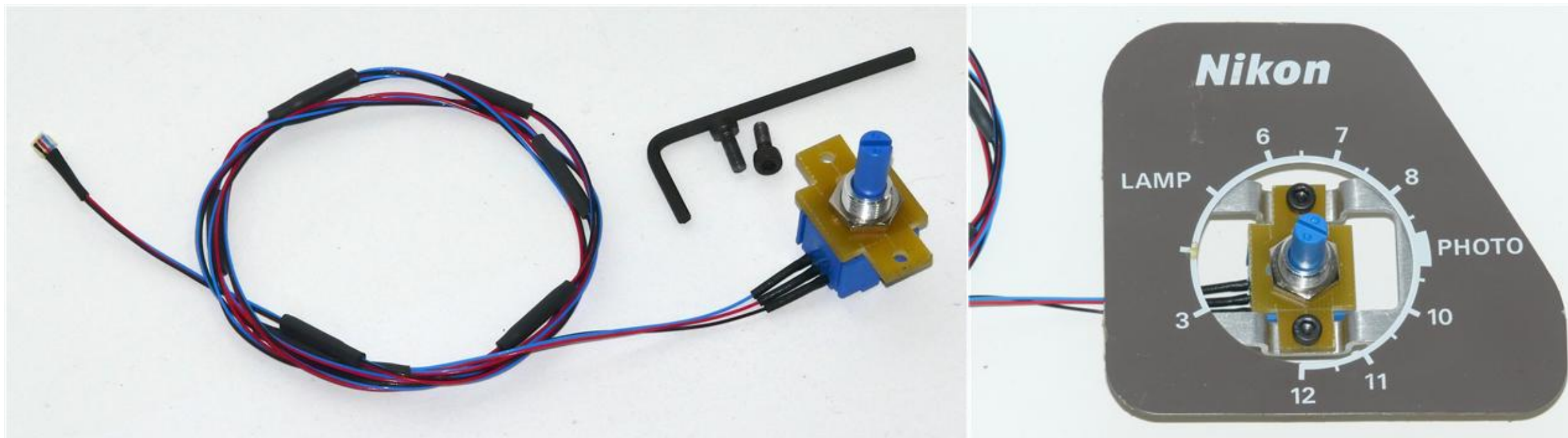
**\*Note:** The microscope appeared in this page is Optiphot-2, however procedure is the same as Diaphot 200/300.

### Nikon Diaphot 200/300 Illuminator Installation step 2 - Remove original adjustment pot.



1. Pry off the face plate, then remove the two screws. The original adjustment pot is now connected only by two wires that will be removed. Remove obsolete power switch and pot cables.

### Nikon Diaphot 200/300 Illuminator Installation step 3 - Install new intensity adjustment pot.



1. New adjustment pot, mounting screws, and 1.5mm hex key.

2. Mounted new adjustment pot.

© Copyright 2018 Nanodyne Measurement Systems. Document authorized for installation of Nanodyne equipment only.

Nikon Diaphot 200/300 Illuminator Installation step 3 - Install new intensity adjustment pot (continue).



3. Install the new pot knob by tightening set screws. Be careful to align it so the pot knob does not rub on the faceplate.



4. After secure the pot knob, route the adjustment cable and attach the face plate back in place.

Nikon Diaphot 200/300 Illuminator Installation step 4 - Mount Nanodyne illuminator



1. Insert the Nanodyne illuminator into the hole in the adapter and secure by tightening the set screw with the 5/64 inch hex key as shown in right image.

\*Note: The microscope appeared in this page is Optiphot-2, however procedure is the same as Diaphot 200/300.

\*Note: The detailed Pot Cable insertion procedure to the T2PIHP Main Assy will be shown in next page.

© Copyright 2018 Nanodyne Measurement Systems. Document authorized for installation of Nanodyne equipment only.

Wayne Bonin	2/18/2019
PN 11226 Nikon Diaphot 200 & 300 - 100W Full Illuminator System	REV 1
Installation Instruction	SHEET 5 OF 7

Connect the plug at the end of the Pot Cable Assembly to the mating socket of the illuminator, as shown in the pictures on this page. NOTE THAT THE PLUG IS KEYED TO ONLY GO INTO THE SOCKET ONE WAY, AS SHOWN.

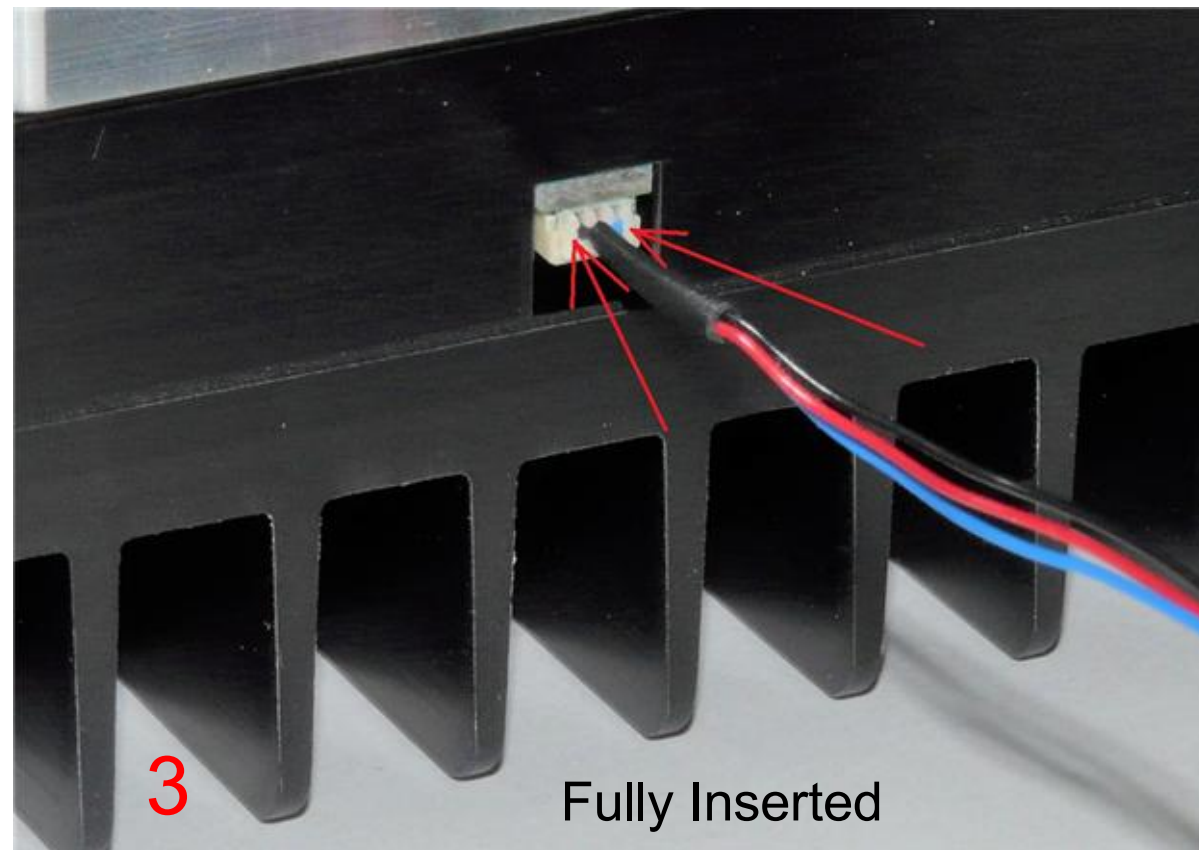
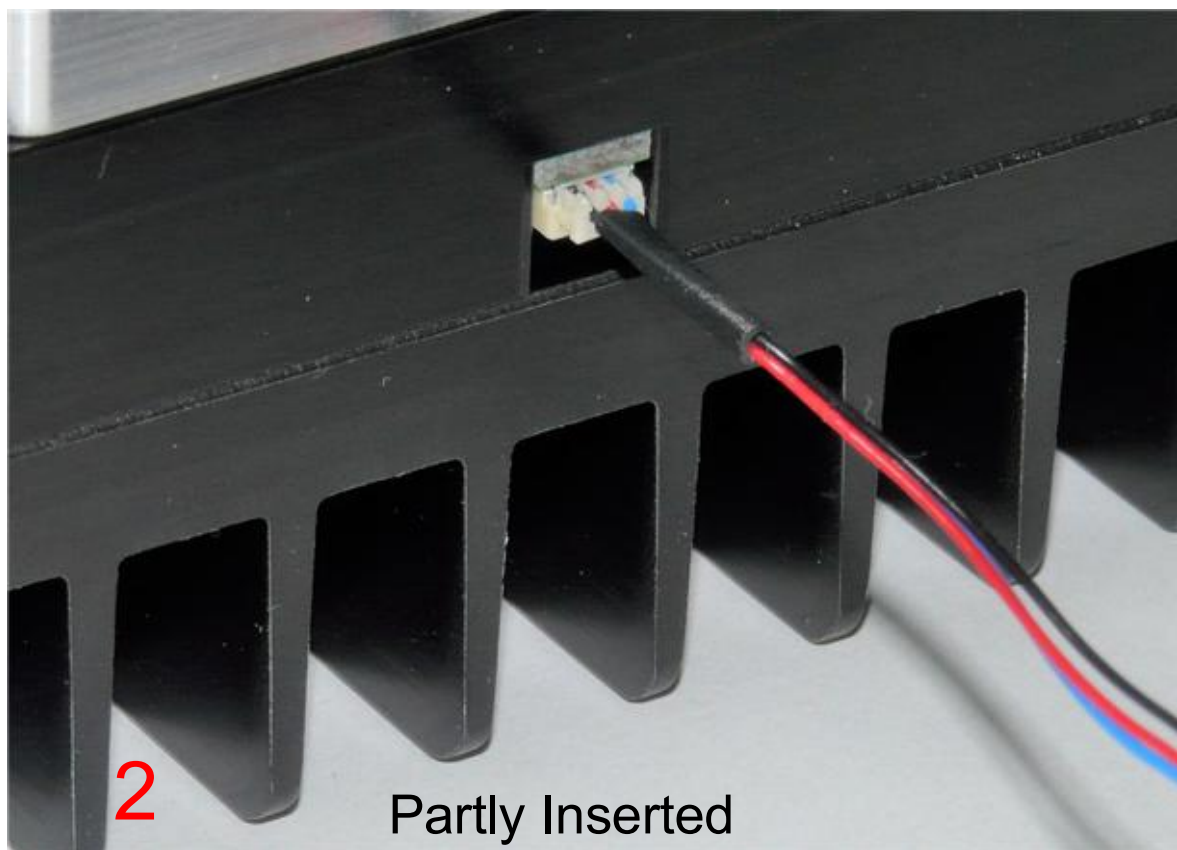
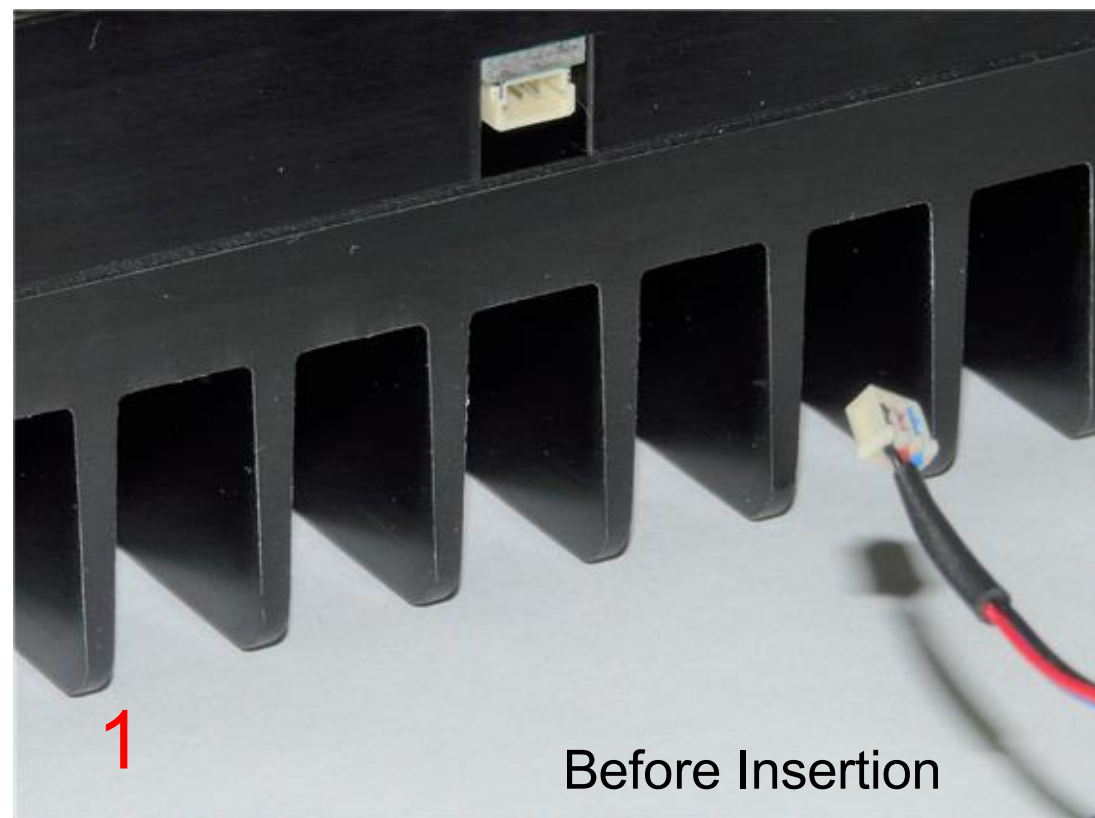
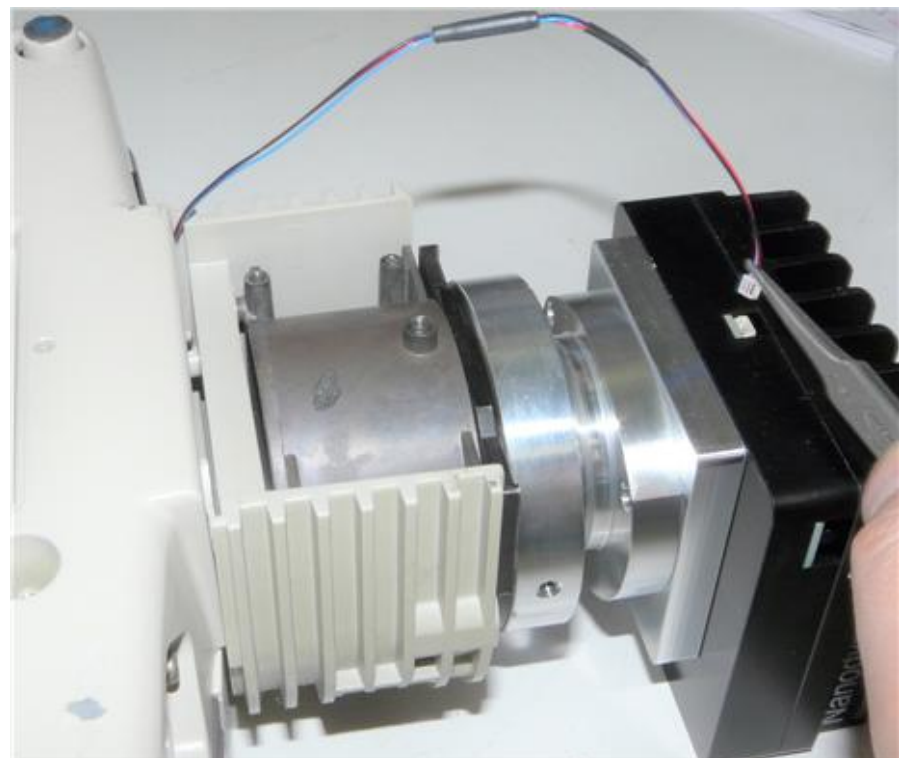
Partially insert the plug into the mating socket of the illuminator by holding the wire next to the plug with your finger (photo 2).

Use your fingernails, if you have them, or tools like a tiny screwdriver or tweezers pushing on the side of the plug to fully insert it (photo 3).

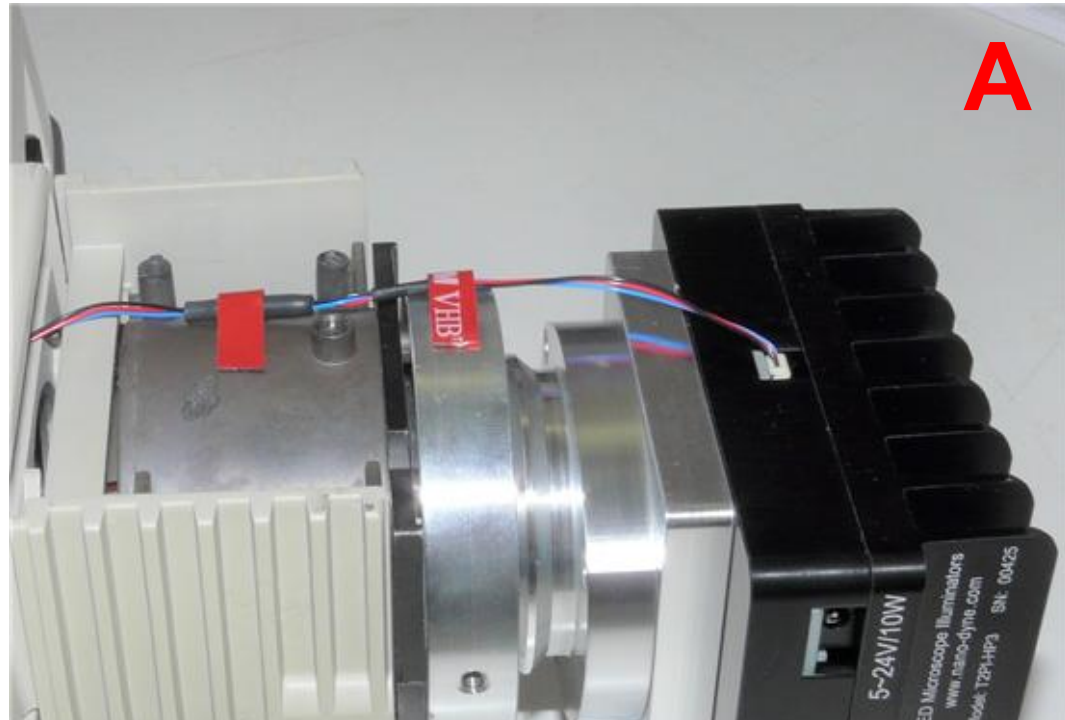
The socket cannot be fully engaged by pushing on the wires, as the wires would just collapse.

To disconnect it if needed, pull the wire straight out by firmly gripping the black heat shrink tubing.

**\*Note: The microscope appeared in this page is Optiphot-2, however procedure is the same as Diaphot 200/300.**

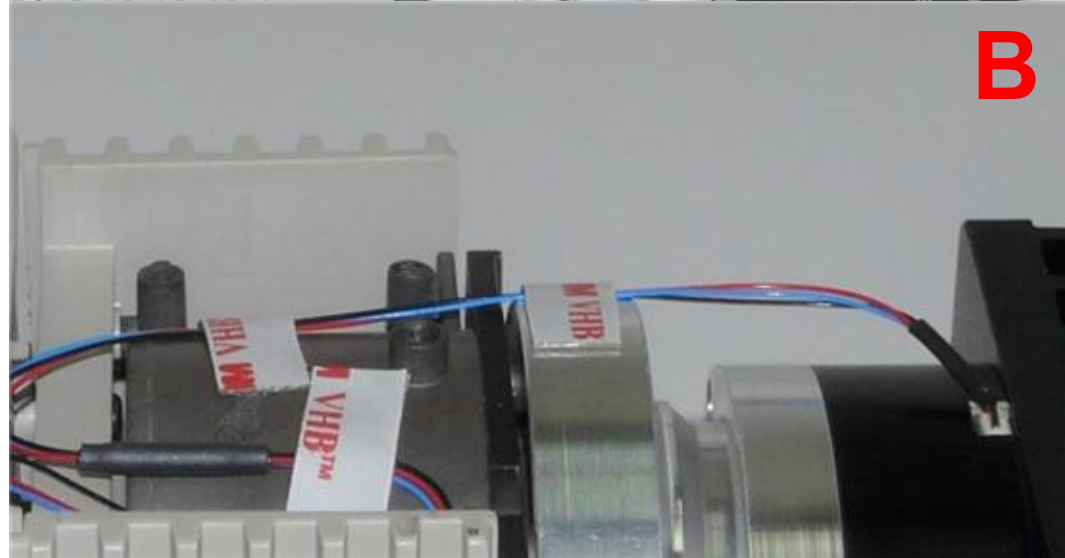


Nikon Diaphot 200/300 Illuminator Installation step 5 - Secure loose cable and plug AC power receptacle.



A

2. Silicone rubber plug provided to block the obsolete AC power receptacle (if needed).



B

3. Silicone rubber plug installed in obsolete AC power receptacle.



1. Secure the loose cable with tape as shown above.

A somewhat neater arrangement could be had by pushing the extra cable inside the microscope (A), but if that is done, be careful to keep the cable out of the path of the light.

We recommend the less neat arrangement as shown in the above picture (B) to avoid possible shadows from the cable.

**\*Note: The microscope appeared in this page is Optiphot-2, however procedure is the same as Diaphot 200/300.**

© Copyright 2018 Nanodyne Measurement Systems. Document authorized for installation of Nanodyne equipment only.



4. Connect the provided power supply and the new illuminator is ready to operate.

Wayne Bonin		2/18/2019	
PN 11226 Nikon Diaphot 200 & 300 - 100W Full Illuminator System			REV 1
Installation Instruction			
SHEET 7		OF 7	