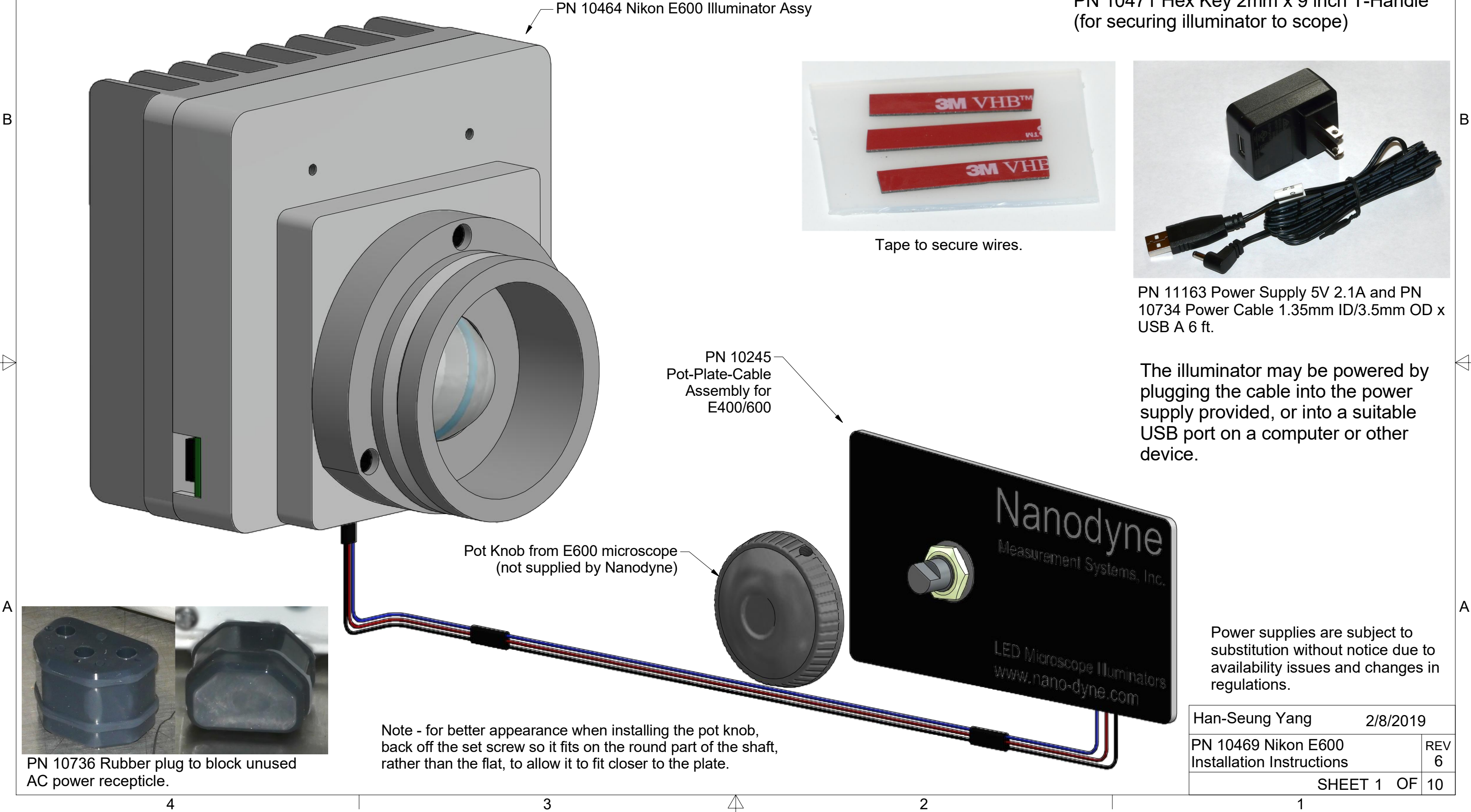


Nanodyne Replacement Illuminator for Nikon E600 Installation Instructions - Included Items

Additional Items Included But Not Shown:

- PN 10456 Hex Key 1.5mm (for pot knob)
- PN 10471 Hex Key 2mm x 9 inch T-Handle (for securing illuminator to scope)



PN 10736 Rubber plug to block unused AC power recepticle.

Note - for better appearance when installing the pot knob, back off the set screw so it fits on the round part of the shaft, rather than the flat, to allow it to fit closer to the plate.

PN 11163 Power Supply 5V 2.1A and PN 10734 Power Cable 1.35mm ID/3.5mm OD x USB A 6 ft.

The illuminator may be powered by plugging the cable into the power supply provided, or into a suitable USB port on a computer or other device.

Power supplies are subject to substitution without notice due to availability issues and changes in regulations.

Han-Seung Yang		2/8/2019
PN 10469 Nikon E600 Installation Instructions		REV 6
SHEET 1		OF 10

Nanodyne Replacement Illuminator for Nikon E600 Installation Instructions



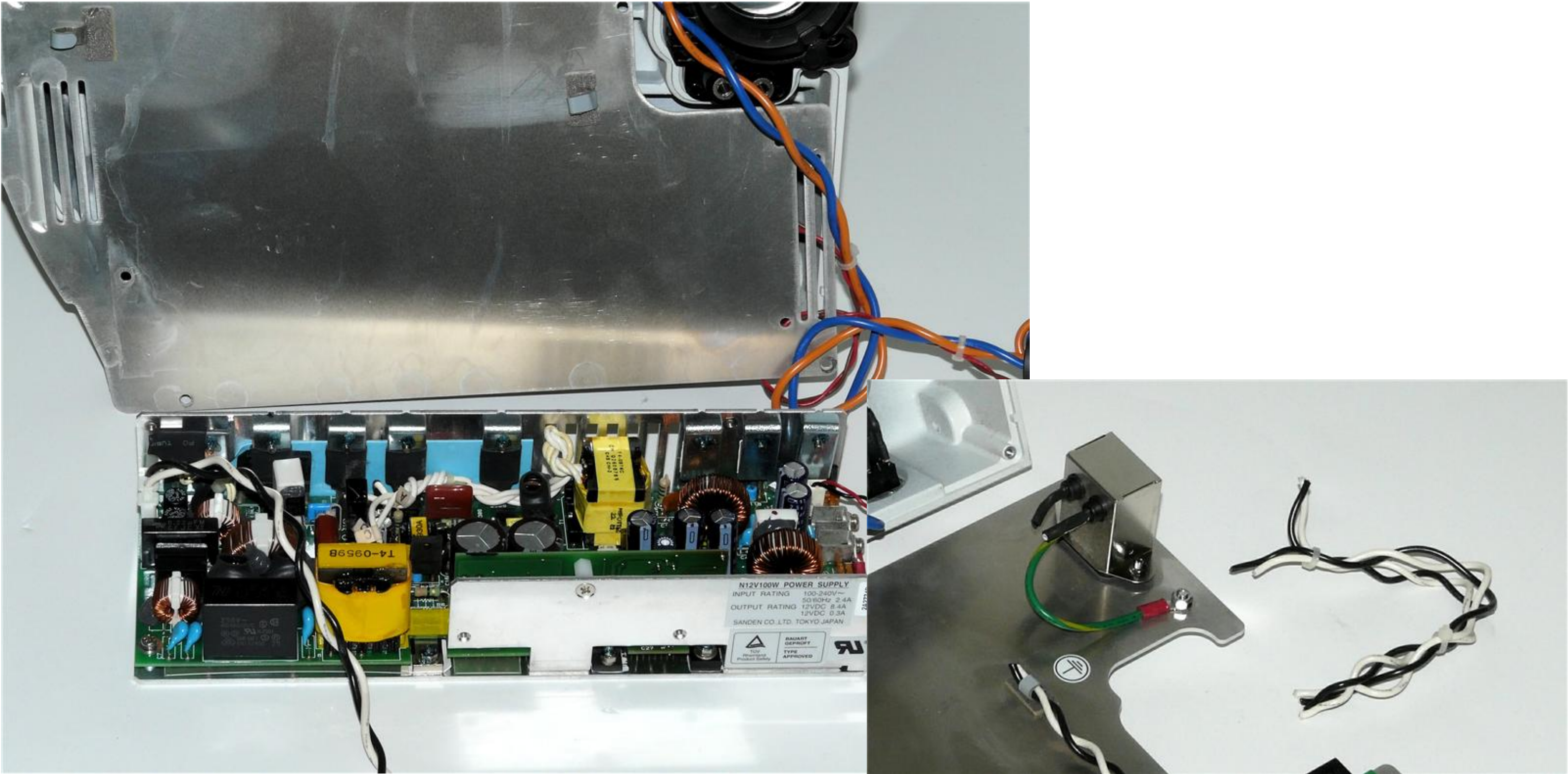
STEP 1: Remove the bottom plate of the microscope by unscrewing the four screws that hold it in place.



STEP 2: Remove the old illuminator, and then remove the back plate of the microscope by unscrewing the screws that hold it in place.

Han-Seung Yang 2/8/2019	
PN 10469 Nikon E600 Installation Instructions	REV 6
SHEET 2 OF 10	

Nanodyne Replacement Illuminator for Nikon E600 Installation Instructions



STEP 3: With the microscope unplugged, it is recommended to remove the AC connections or cut them and secure them out of the way. Because the new illumination system runs on its own DC power source, the AC port is now obsolete. This is a safety measure so that if the microscope is mistakenly plugged in while being maintained, there is minimized risk of electric shock. In addition, the rubber AC input safety cover should be inserted into the AC receptacle to minimize the risk of the microscope being plugged into an outlet in the first place. Because the microscope will no longer need its internal circuitry, this may optionally be removed as well.

Han-Seung Yang	2/8/2019
PN 10469 Nikon E600 Installation Instructions	REV 6
SHEET 3 OF 10	

4 3 2 1

Nanodyne Replacement Illuminator for Nikon E600 Installation Instructions



STEP 4: Remove the potentiometer knob from the microscope using the 1.5mm hex key provided. Set the knob aside, as it will be replaced later in the installation process.

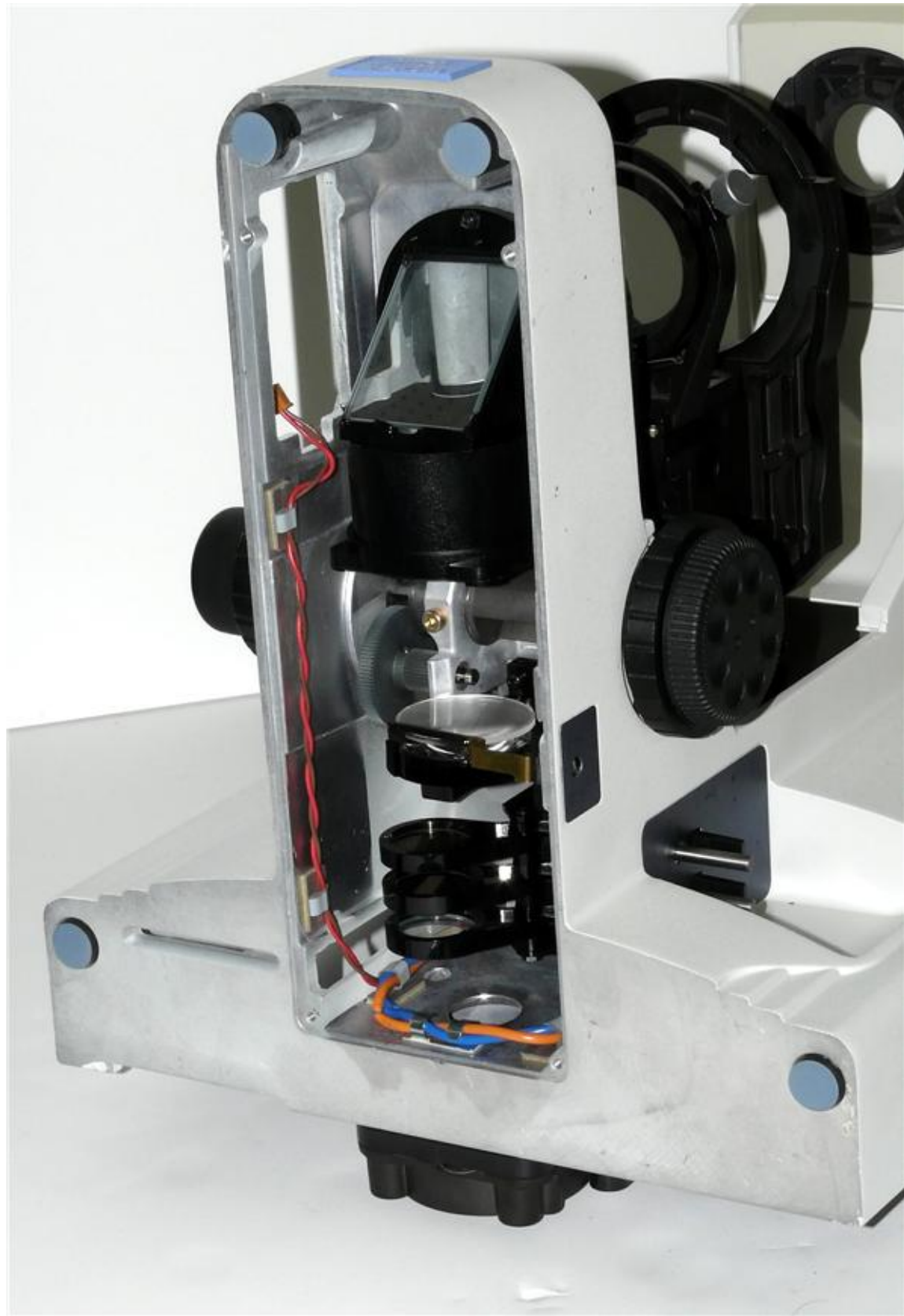


STEP 5: Remove the plastic potentiometer plate as shown in the picture above by pushing from the inside of the microscope. If needed, a flat head screwdriver or similar tool can be used to assist in prying the plate free.

Han-Seung Yang 2/8/2019	
PN 10469 Nikon E600 Installation Instructions	REV 6
SHEET 4 OF 10	

4 3 2 1

Nanodyne Replacement Illuminator for Nikon E600 Installation Instructions



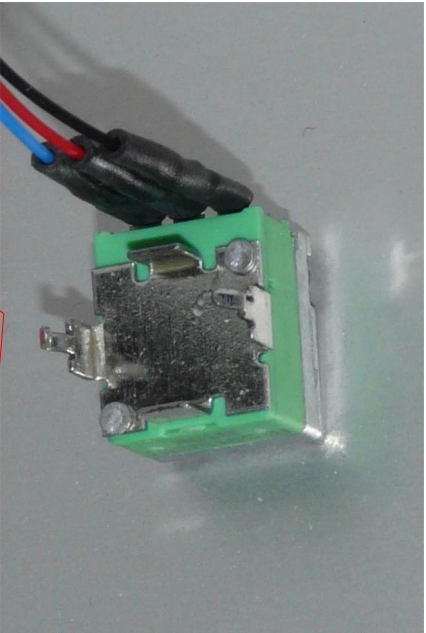
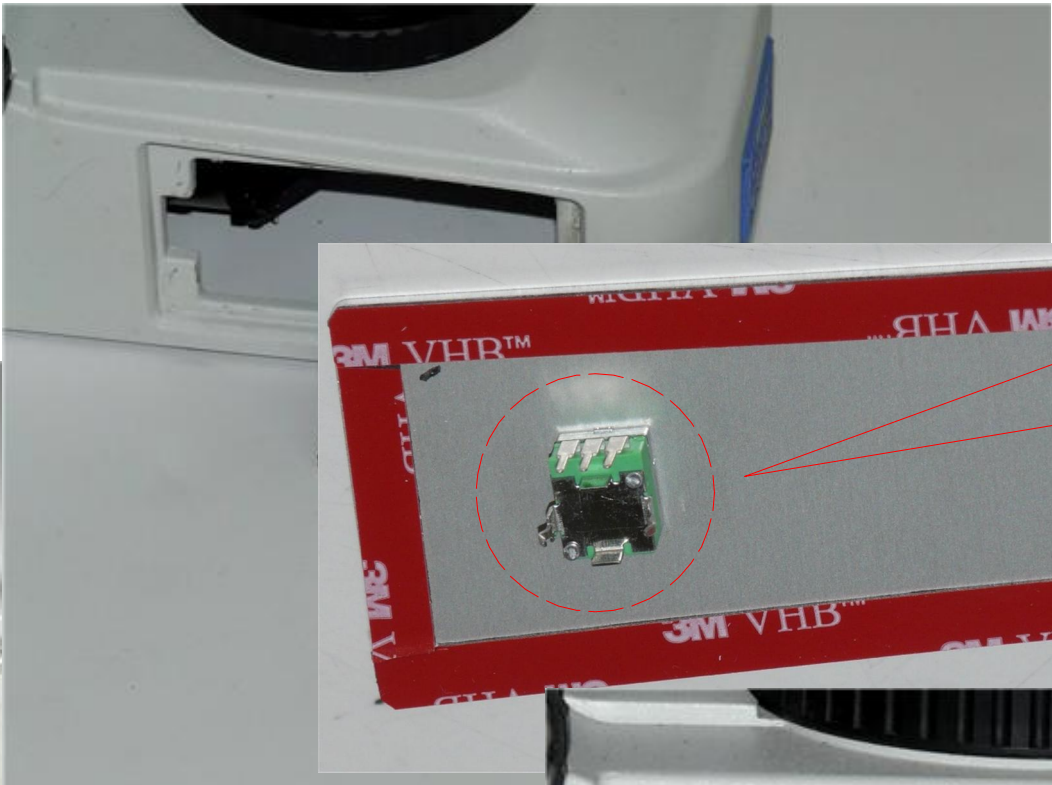
STEP 6: Disconnect the wires that go to the circuit board on the back of the plate. Cut them and remove them from the microscope.

Han-Seung Yang	2/8/2019
PN 10469 Nikon E600 Installation Instructions	REV 6
SHEET 5 OF 10	

Nanodyne Replacement Illuminator for Nikon E600
Installation Instructions



STEP 7: Remove any glue residue left from the plate from the microscope body, in order to ensure a proper bond for the new replacement plate.



STEP 8: Remove the plastic backing from the tape on the new potentiometer plate. Install the plate onto the microscope by pressing it in the location where the old plate resided.

Han-Seung Yang		2/8/2019
PN 10469 Nikon E600 Installation Instructions		REV 6
SHEET 6		OF 10

Nanodyne Replacement Illuminator for Nikon E600 Installation Instructions



STEP 9: Replace the potentiometer knob onto the new potentiometer shaft, and tighten it in place with the 1.5mm hex key provided.

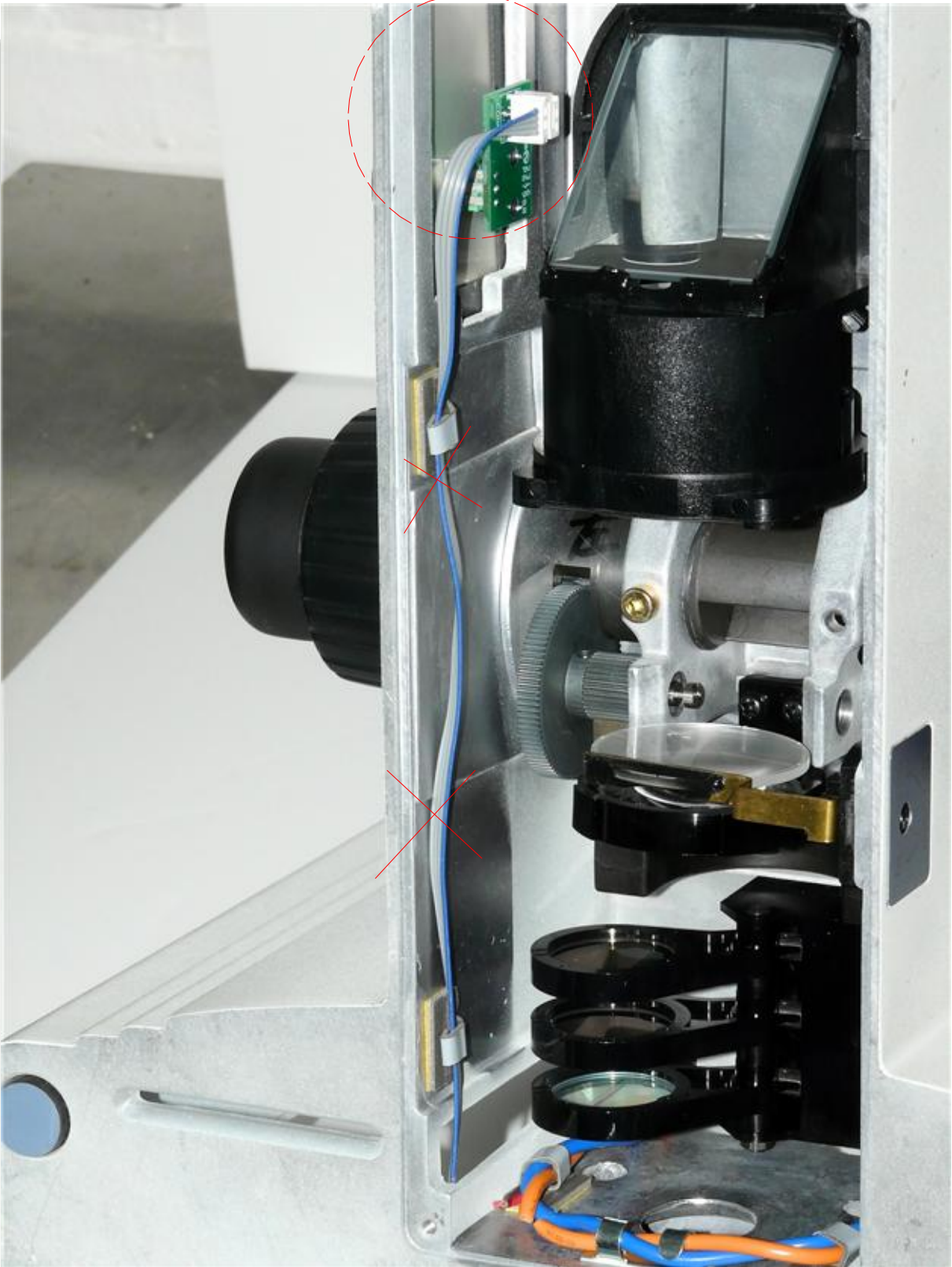
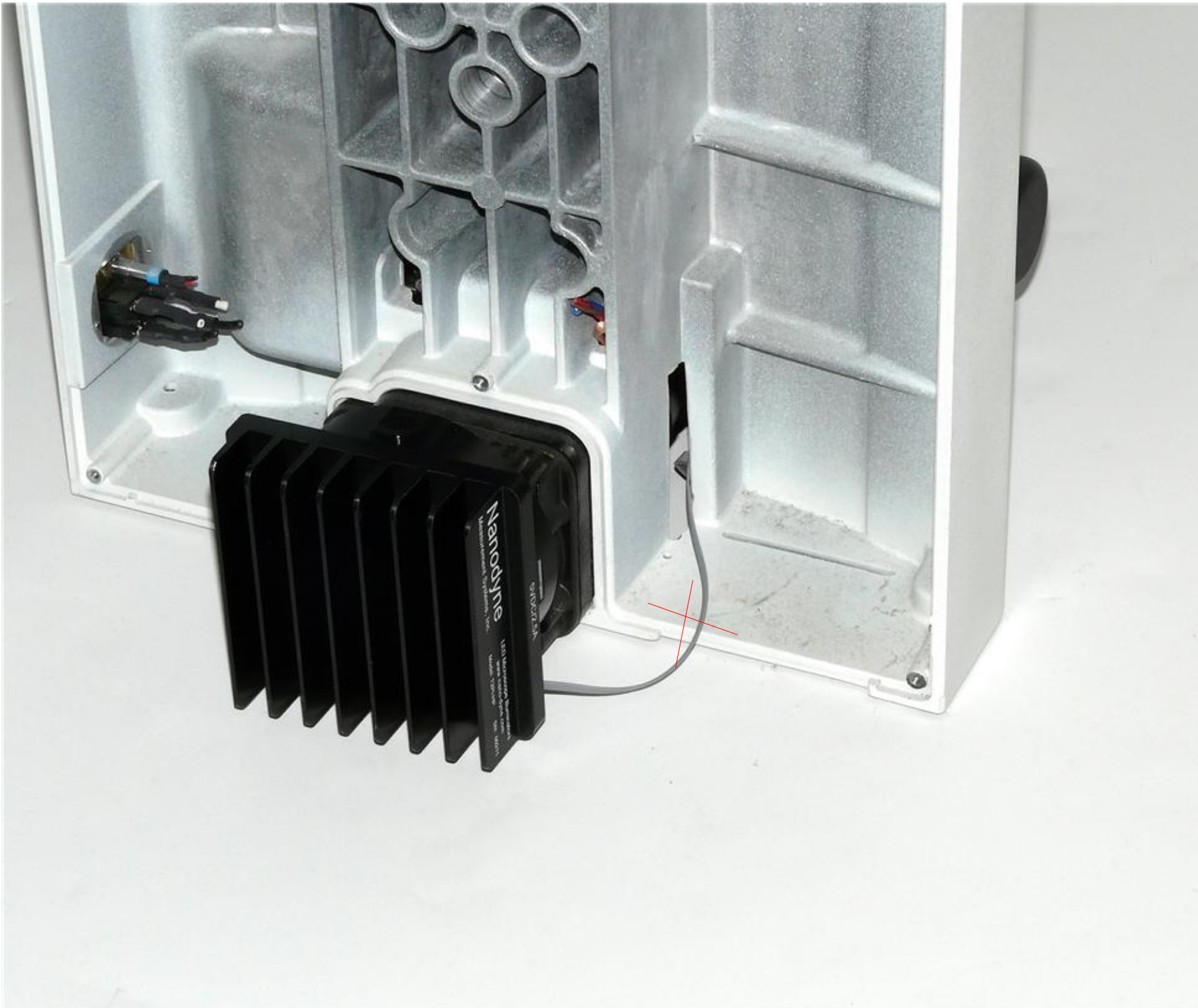
For better appearance when installing the pot knob, back off the set screw so it fits on the round part of the shaft, rather than the flat, to allow it to fit closer to the plate.



STEP 10: Install the new illuminator onto the back of the microscope. Secure it by tightening the set screw with the 2mm hex key provided.

Han-Seung Yang		2/8/2019
PN 10469 Nikon E600 Installation Instructions		REV 6
SHEET 7		OF 10

Nanodyne Replacement Illuminator for Nikon E600 Installation Instructions



STEP 11: Route the cable to the new illuminator into the microscope as shown. Connect the socket at the end of the cable to the new illuminator as shown in page 9, noting that the connector will only seat one way. Route the cable through the existing wire ties to keep the cable out of the way of moving components.

Note: Pot Cable assembly (red X and O) in above images is out dated. We are now using PN 10843 Pot Cable Assembly.

Nanodyne Replacement Illuminator for Nikon E600
Installation Instructions

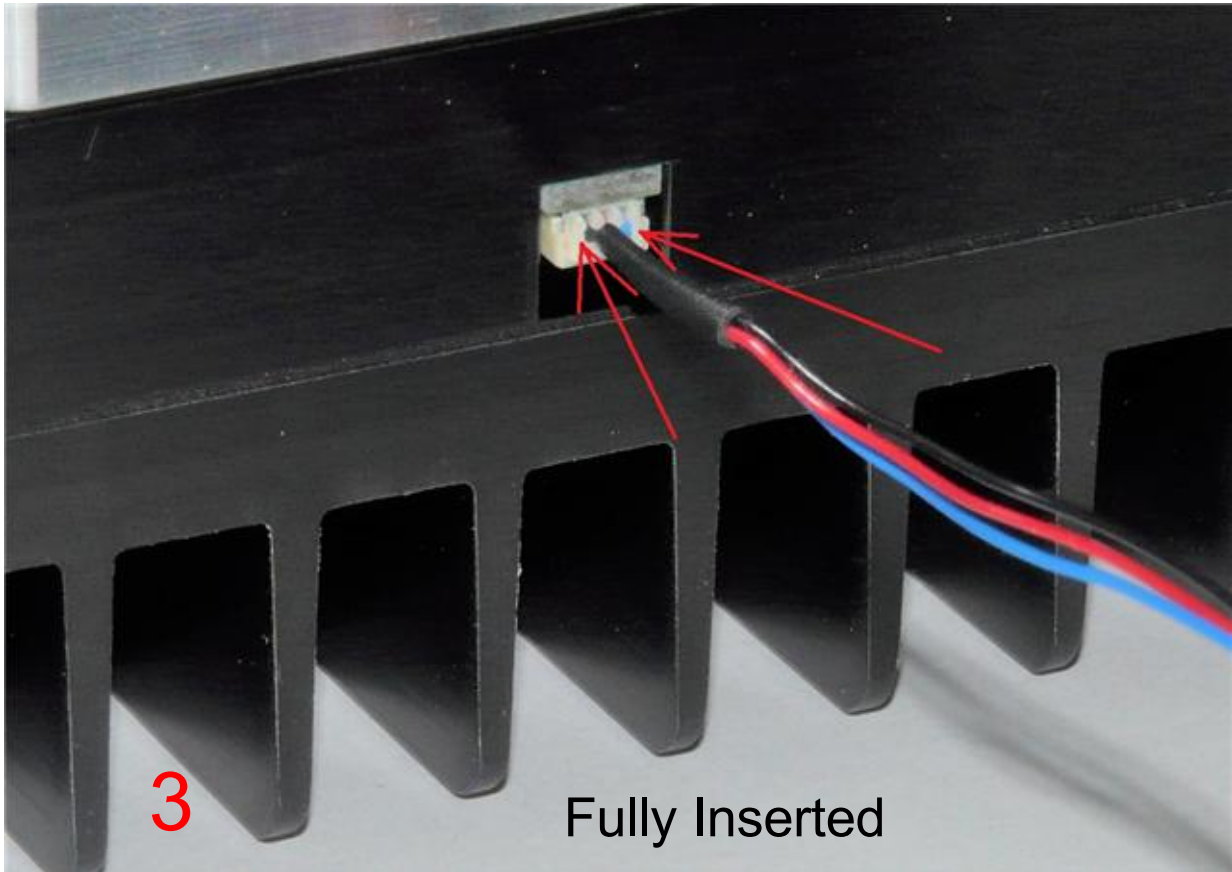
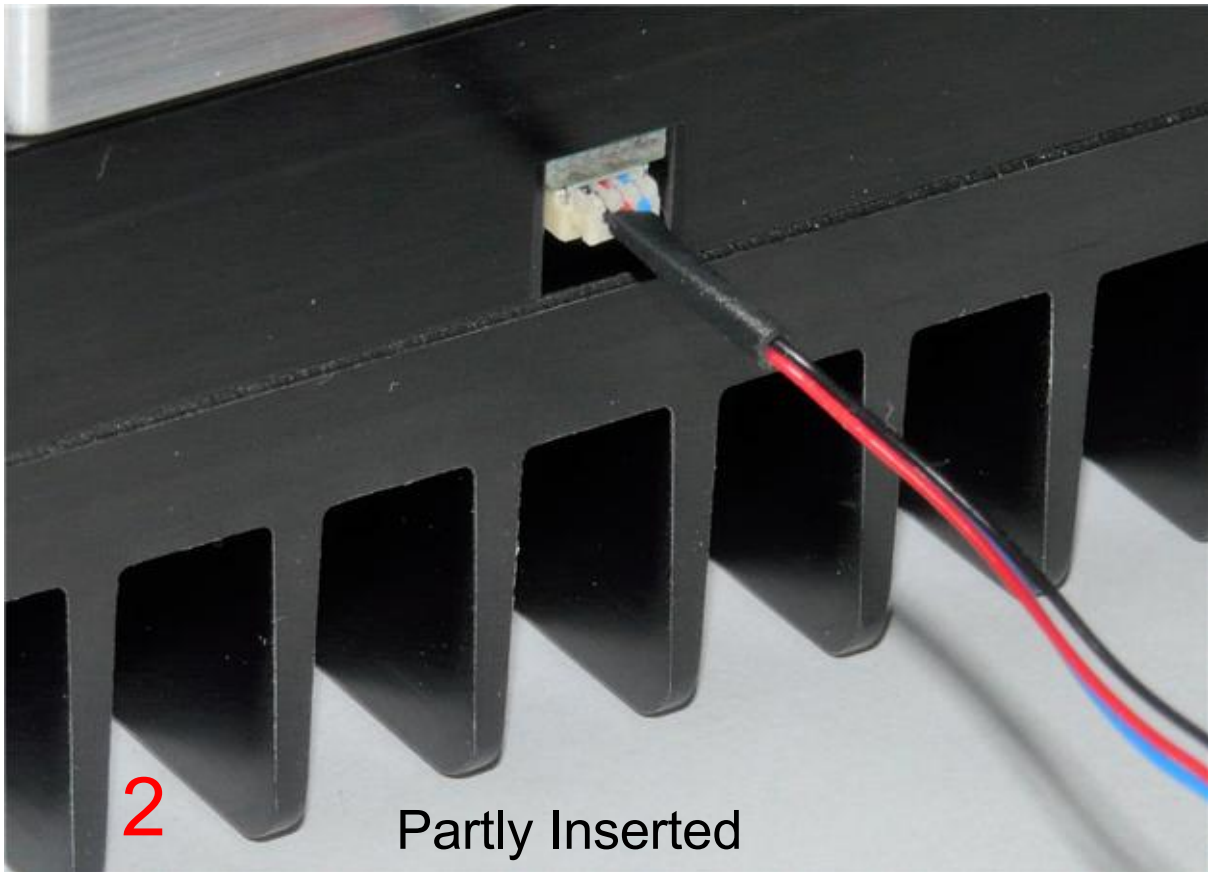
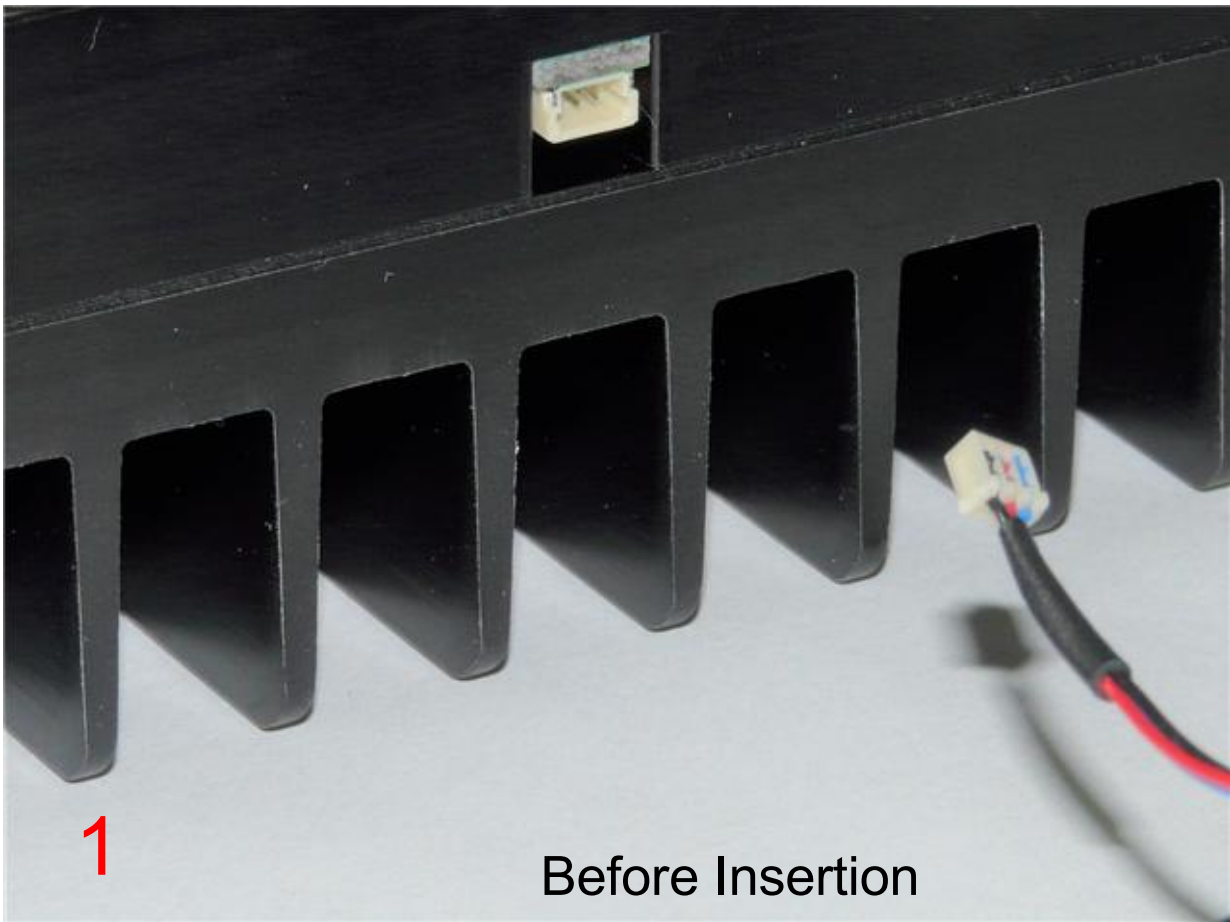
Connect the plug at the end of the Pot Cable Assembly to the mating socket of the illuminator, as shown in the pictures on this page. NOTE THAT THE PLUG IS KEYED TO ONLY GO INTO THE SOCKET ONE WAY, AS SHOWN.

Partially insert the plug into the mating socket of the illuminator by holding the wire next to the plug with your finger (photo 2).

Use your fingernails, if you have them, or tools like a tiny screwdriver or tweezers pushing on the side of the plug to fully insert it (photo 3).

The socket cannot be fully engaged by pushing on the wires, as the wires would just collapse.

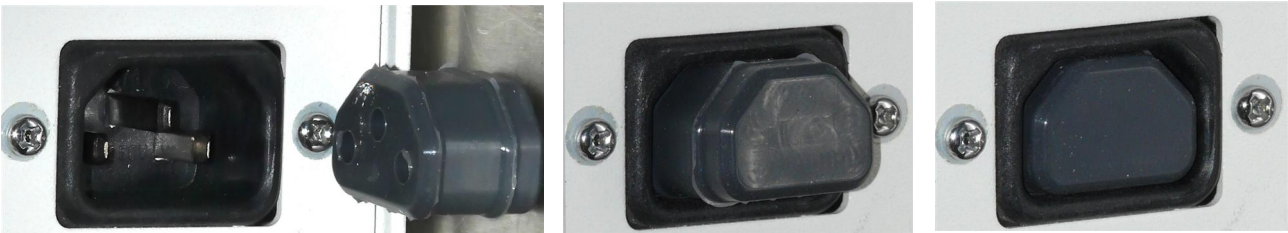
To disconnect it if needed, pull the wire straight out by firmly gripping the black heat shrink tubing.



Nanodyne Replacement Illuminator for Nikon E600 Installation Instructions



Cable can also be inserted through here without filing the back cover.



STEP 13: Replace the back cover onto the microscope, noting that the cable from the illuminator can be run in two different ways: the first by filing a small groove in the rear plate and running the cable through, as shown in the picture above, or by routing it through the bottom opening indicated by the arrow above. Once the cable has been routed into the microscope, secure the remaining cable to the illuminator using the VHB tape provided.

STEP 14: Replace the bottom cover onto the microscope. If not done previously, insert the PN 10736 rubber plug into the AC power receptacle on the back of the microscope to deter application of obsolete and potentially dangerous voltage to the microscope. Once plugged in, the illuminator is now ready for use.

Note: Pot Cable assembly (red X) in above images is out dated. We are now using PN 10843 Pot Cable Assembly.

Han-Seung Yang	2/8/2019
PN 10469 Nikon E600 Installation Instructions	REV 6
SHEET 10 OF	10