

4

3

2

1

Additional Items Included But Not Shown:

- PN 10457 Hex Key 2.5mm Short Arm (for M3 screws)
- PN 10455 Hex Key 3/32 Ball End L-Key Stubby (for 4-40 screws)
- PN 10275 SHCS M3 x 0.5 x 8mm (3pcs) - (in case your condenser lens is different from pictured - refer to full installation instructions for more details).

PN 10584 Olympus BX50 Pot Plate Cable Assembly

PN 11132 T2PIHP3 Main Assy T1 Adapter

PN 10267 SHCS M3 x 0.5 x 25mm (3 pcs)

PN 10382 Adapter Olympus BX50 Series

PN 10365 SHCS 4-40 x 3/8 (4 pcs)

Olympus BX50 Condenser assembly (Save from original lamp housing)

3M VHB tape to secure pot cable

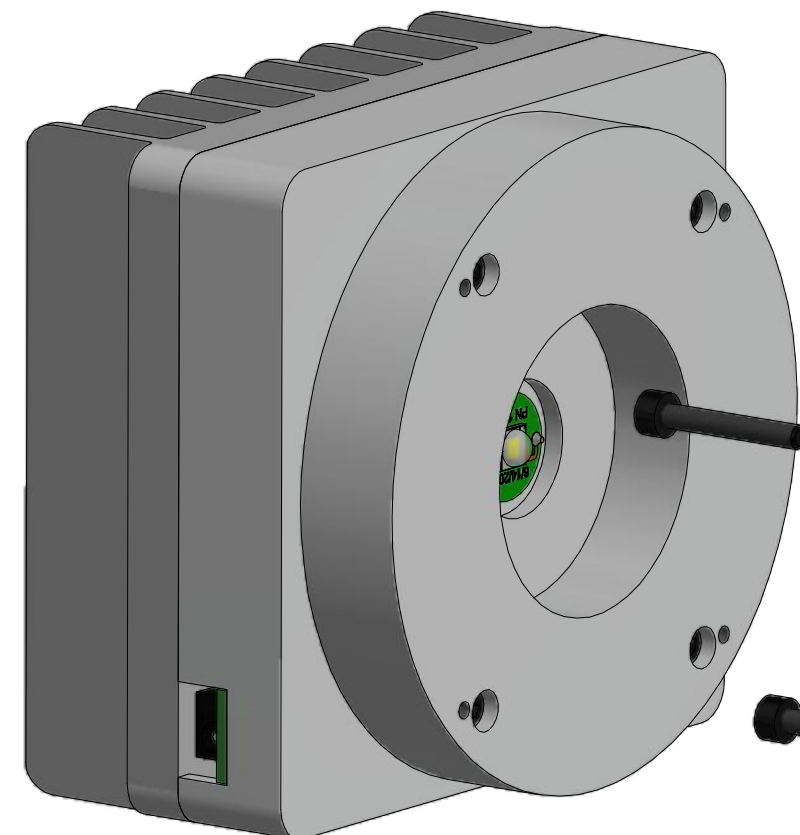


PN 11163 Power Supply 5V 2.1A and PN 10734 Power Cable 1.35mm ID/3.5mm OD x USB A 6 ft.

The illuminator may be powered by plugging the cable into the power supply provided, or into a suitable USB port on a computer or other device.

Power supplies are subject to substitution without notice due to availability issues and changes in regulations.

Wayne Bonin	1/27/2019
PN 10408 Olympus BX50 Bottom Illuminator System	REV 4
SHEET 1 OF 1	



PN 10736 Rubber plug to block unused AC power receptacle.

