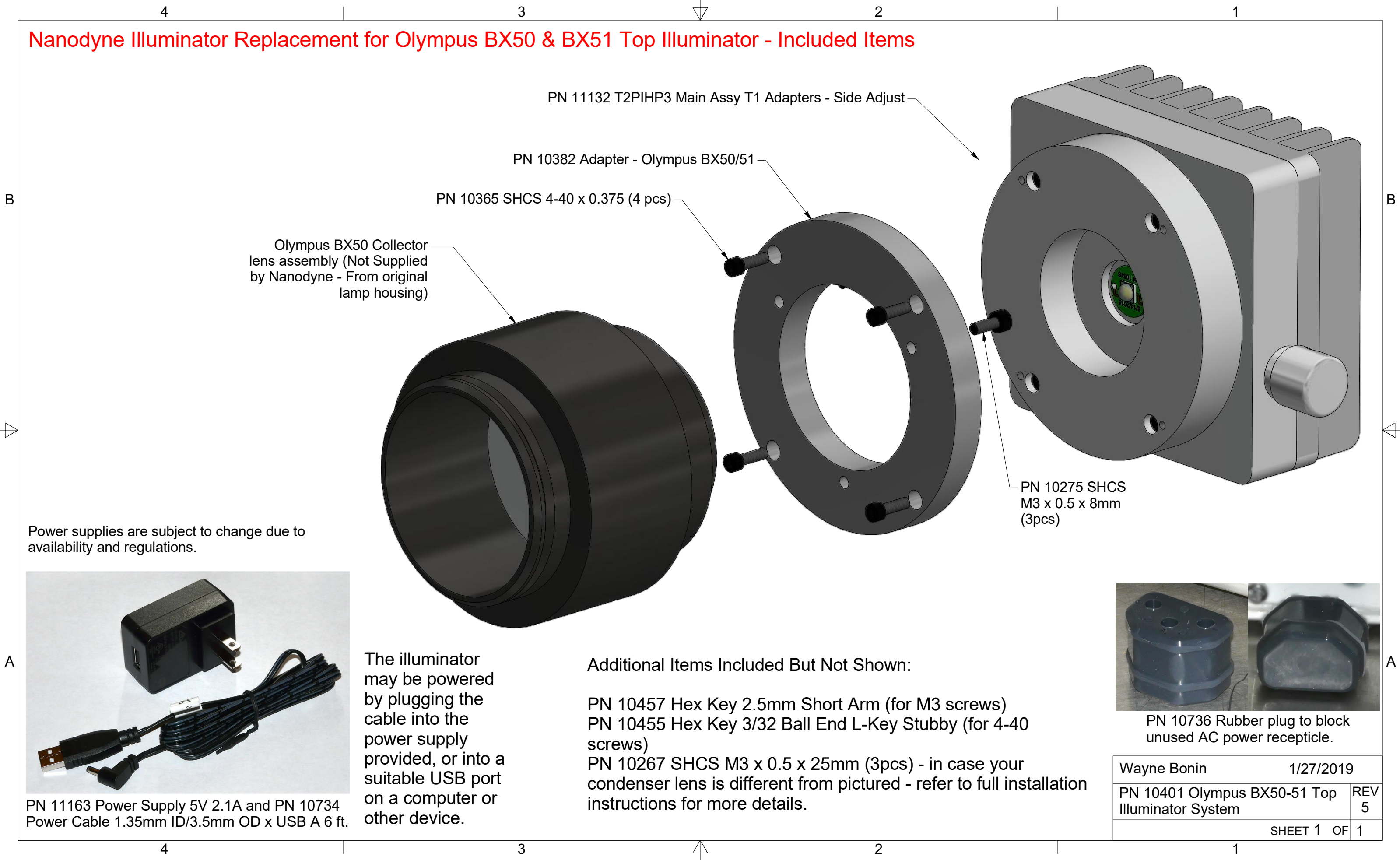


Nanodyne Illuminator Replacement for Olympus BX50 & BX51 Top Illuminator - Included Items



Olympus BX50 Collector lens assembly (Not Supplied by Nanodyne - From original lamp housing)

PN 11132 T2PIHP3 Main Assy T1 Adapters - Side Adjust

PN 10382 Adapter - Olympus BX50/51

PN 10365 SHCS 4-40 x 0.375 (4 pcs)

PN 10275 SHCS M3 x 0.5 x 8mm (3pcs)

Power supplies are subject to change due to availability and regulations.



PN 11163 Power Supply 5V 2.1A and PN 10734 Power Cable 1.35mm ID/3.5mm OD x USB A 6 ft.

The illuminator may be powered by plugging the cable into the power supply provided, or into a suitable USB port on a computer or other device.

Additional Items Included But Not Shown:

- PN 10457 Hex Key 2.5mm Short Arm (for M3 screws)
- PN 10455 Hex Key 3/32 Ball End L-Key Stubby (for 4-40 screws)
- PN 10267 SHCS M3 x 0.5 x 25mm (3pcs) - in case your condenser lens is different from pictured - refer to full installation instructions for more details.



PN 10736 Rubber plug to block unused AC power receptacle.

Wayne Bonin	1/27/2019
PN 10401 Olympus BX50-51 Top Illuminator System	REV 5
SHEET 1 OF 1	