

4 3 2 1

Nanodyne Replacement Illuminator for Zeiss OPMI 1-FC Surgical Microscope illuminator System Installation: Included Items

Additional Items Included But Not Shown:

PN 10546 Hex Key 1.5mm (to remove fiber cable from microscope and attach Nanodyne illuminator)

PN 10490 Hex Key 5/64 Short Arm (for set screw in illuminator - to adjust focus)

The illuminator may be powered by plugging the cable into the power supply provided, or into a suitable USB port on a computer or other device.

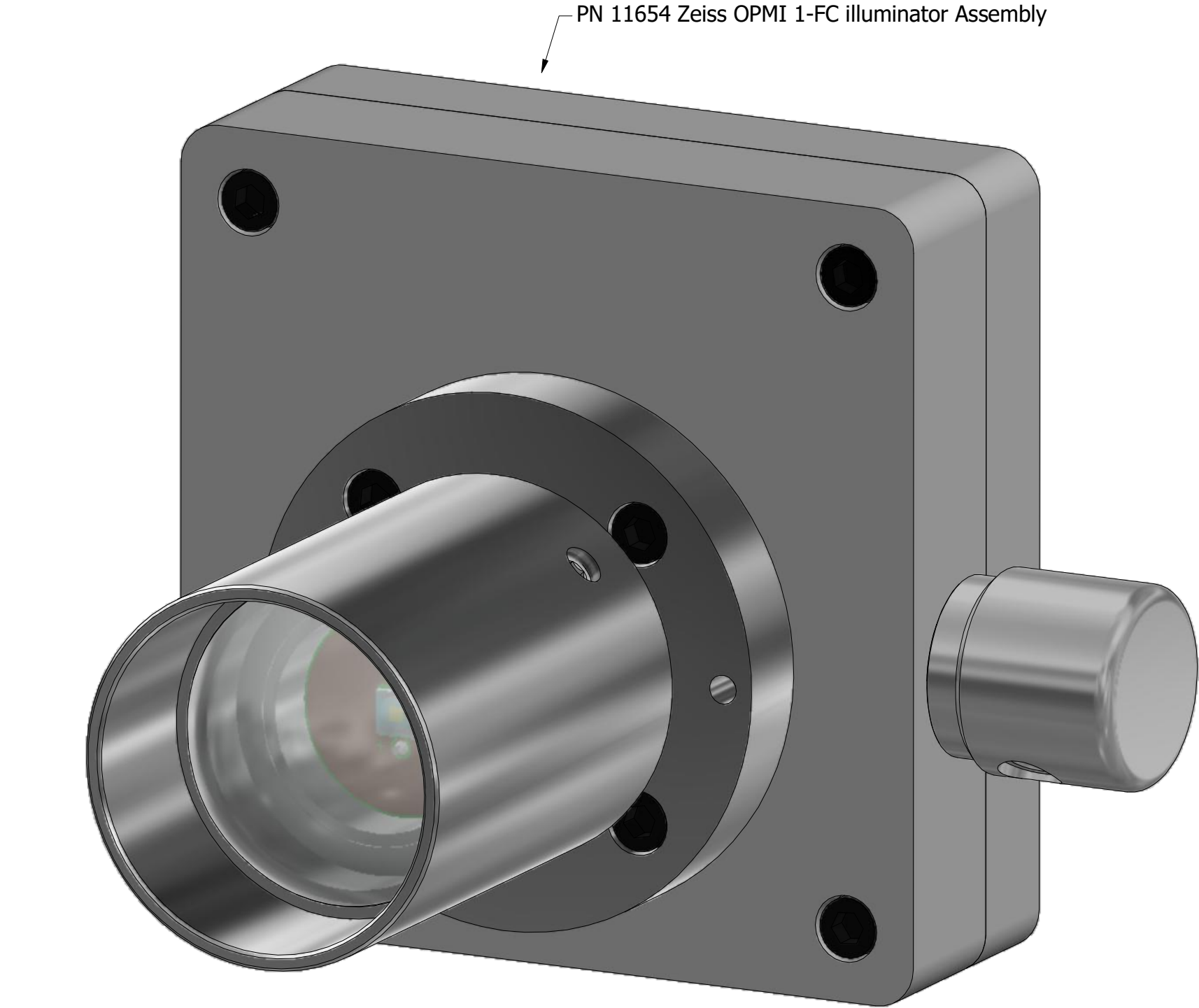


PN 10733 Power Supply - XP Power 5V 1A and PN 10734 Cable Assy 1.35mm ID x 3.5mm OD RA plug to USB A, 6 foot.

Power supplies subject to substitution without notice due to availability issues and changes in regulations.



PN 11000 Power Cord Extension 1.35mm ID x 3.5mm OD RA plug to jack 6 foot. (use if needed for more length)



Wayne Bonin		3/15/2020	
PN 11669 Zeiss OPMI 1-FC Illuminator Installation Instructions			REV 1
SHEET 1		OF	4

4 3 2 1

Nanodyne Replacement Illuminator for Zeiss OPMI 1-FC Surgical Microscope illuminator System Installation: Overview



The Nanodyne illuminator replaces all of the original electronics. The fiber optic cable is eliminated also. The arrow above points to the set screw that holds the fiber optic cable in place at the microscope. The Nanodyne illuminator installs there, where the fiber optic cable is shown attached to the microscope.



Nanodyne Replacement Illuminator for Zeiss OPMI 1-FC Surgical Microscope illuminator System Installation: Step 1, Remove Fiber Optic Cable, Set Collector Lens Spacing.



(1) Loosen the set screw on the bottom indicated by the red arrow. (the black dot on the front is just a black dot)
Remove the black collector lens assembly with the fiber optic cable attached, as shown above.



The Nanodyne illuminator has its own collector lens. The position may be adjusted by loosening the set screw and sliding it in or out.



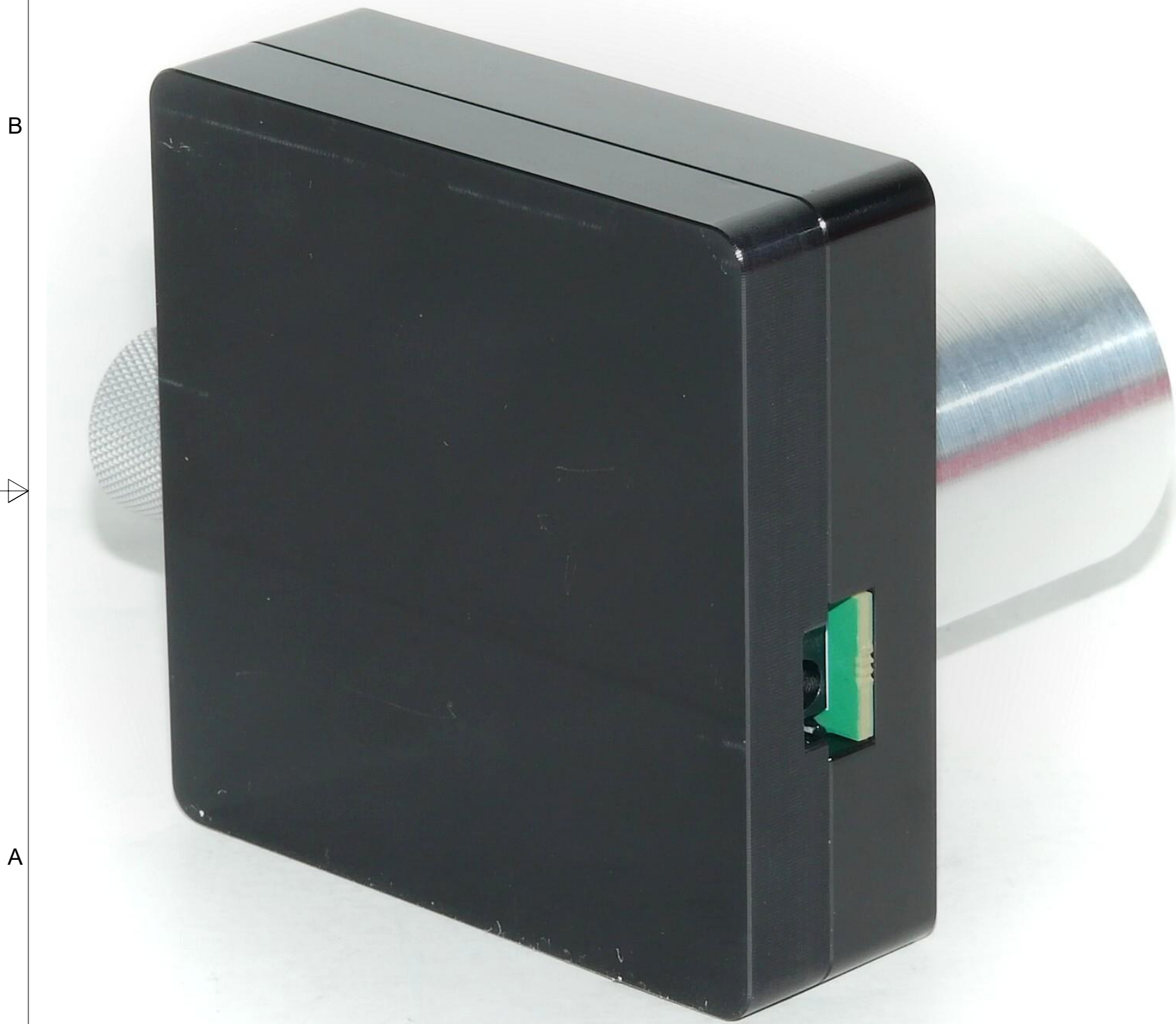
Collector lens installed fully inserted. Suggested starting point is with the collector lens pulled out 0.050 inch (1.25mm).

(3) Set the collector lens assembly so it is pulled out 0.050 inch (1.25mm) from the fully inserted position shown in the top right photo. Be sure it is secured with the set screw.



(2) Disconnect the fiber cable from the lamp end and completely remove it from the microscope. It will not be used.

Nanodyne Replacement Illuminator for Zeiss OPMI 1-FC Surgical Microscope illuminator System Installation: Step 2, Install Nanodyne illuminator and Connect Power Supply.



Insert the illuminator into the port on the microscope where the black fiber optic collector lens assembly was removed, and secure it with the set screw in the microscope.

Plug the power supply into an AC outlet.
Plug the USB end of the power cable into the power supply.
Plug the round barrel end of the cable into the connector on the side of the illuminator (visible in photo at left).

(if a longer power cable is needed, use the included extension)

Look through the microscope and check the light pattern. If it is not uniform, it can be adjusted by changing the position of the collector lens on the illuminator.

Wayne Bonin		3/15/2020	
PN 11669 Zeiss OPMI 1-FC Illuminator Installation Instructions			REV 1
SHEET 4		OF	4