

# Nanodyne Replacement Illuminator for Zeiss AXIO LAB.A1 Microscope Installation Instructions: Included Items

## Additional Items Included But Not Shown:

- PN 10456 Hex Key 1.5mm (for pot knob and bottom cover)
- PN 10337 Hex Key 2mm (for bottom cover)
- PN 10566 Hex Key 2.5mm long arm ball end (for M3 microscope screws)
- PN 10490 Hex Key 5/64 inch - for 8-32 set screw
- PN 10748 Switch Blank-off Plate

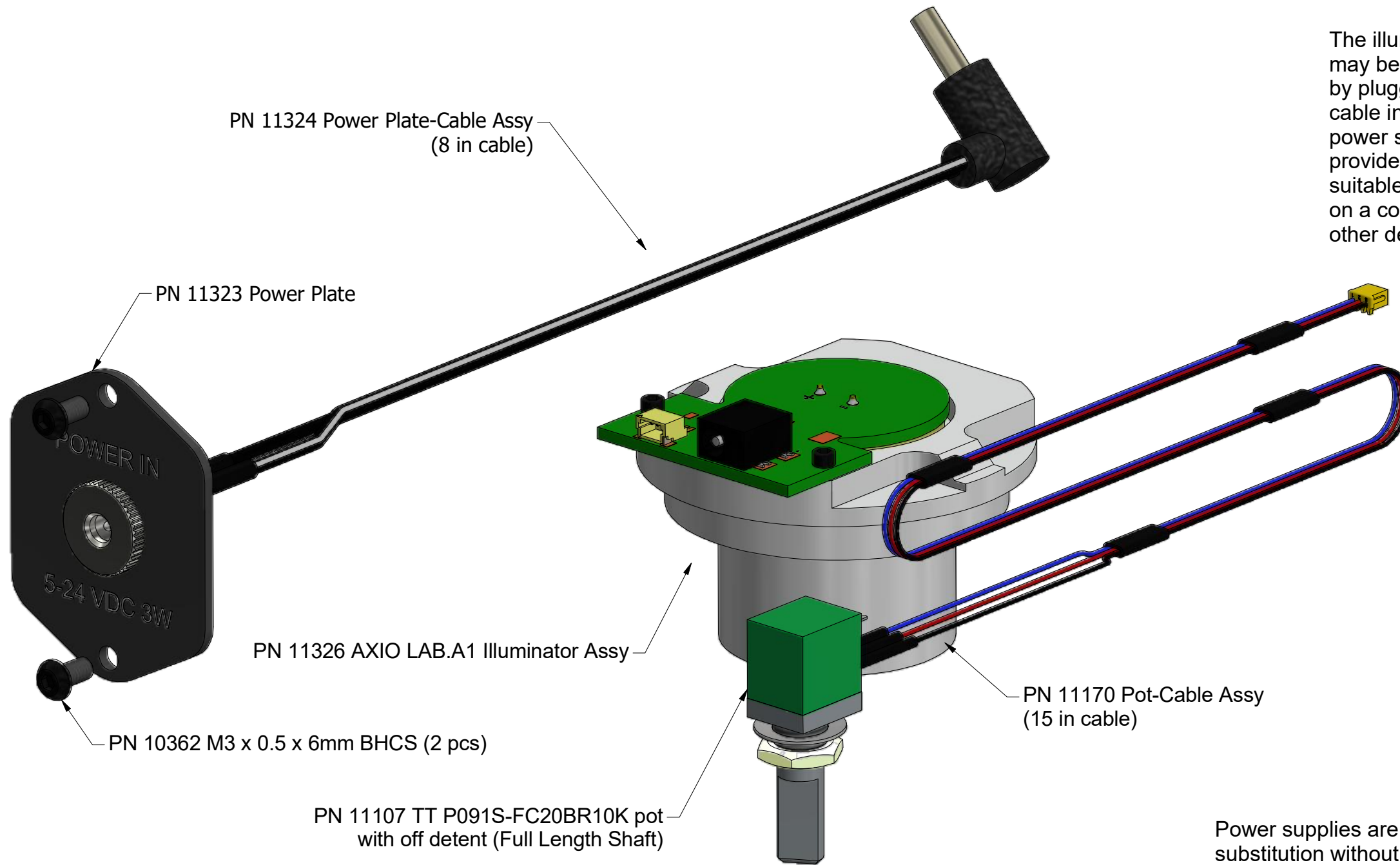
The illuminator may be powered by plugging the cable into the power supply provided, or into a suitable USB port on a computer or other device.



PN 10733 Power Supply - XP Power 5V 1A and PN 10734 Cable Assy 1.35mm ID x 3.5mm OD RA plug to USB A, 6 foot.



Tape to secure wires.



Power supplies are subject to substitution without notice due to availability issues and changes in regulations.

Han-Seung Yang		2/20/2020
PN 11339 Zeiss AXIO LAB.A1 Illuminator System Installation Instructions		REV 1
SHEET 1		OF 6



Nanodyne Replacement Illuminator for Zeiss AXIO LAB.A1 Microscope Installation Instructions - Step 1. Remove bottom cover and old AC power block.



Photo 1a



Photo 1b

Rear cover

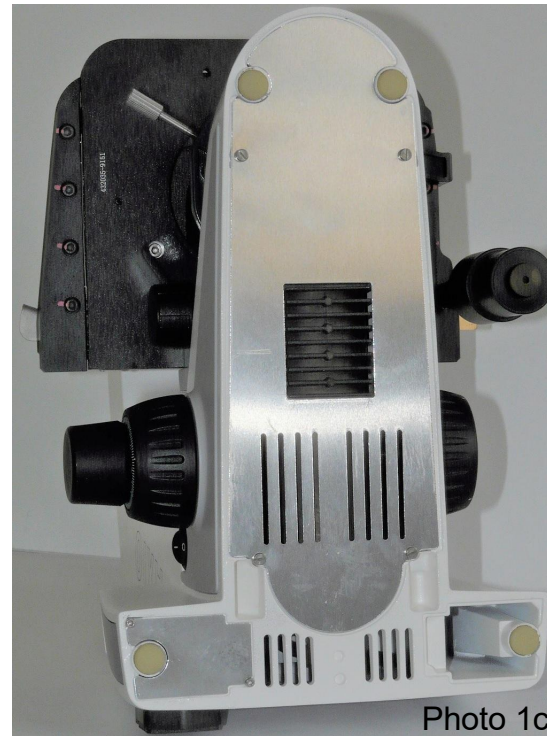


Photo 1c

Bottom cover



Photo 1d

AC power block bottom cover

The photo 1a shows the microscope this illuminator system was designed for.

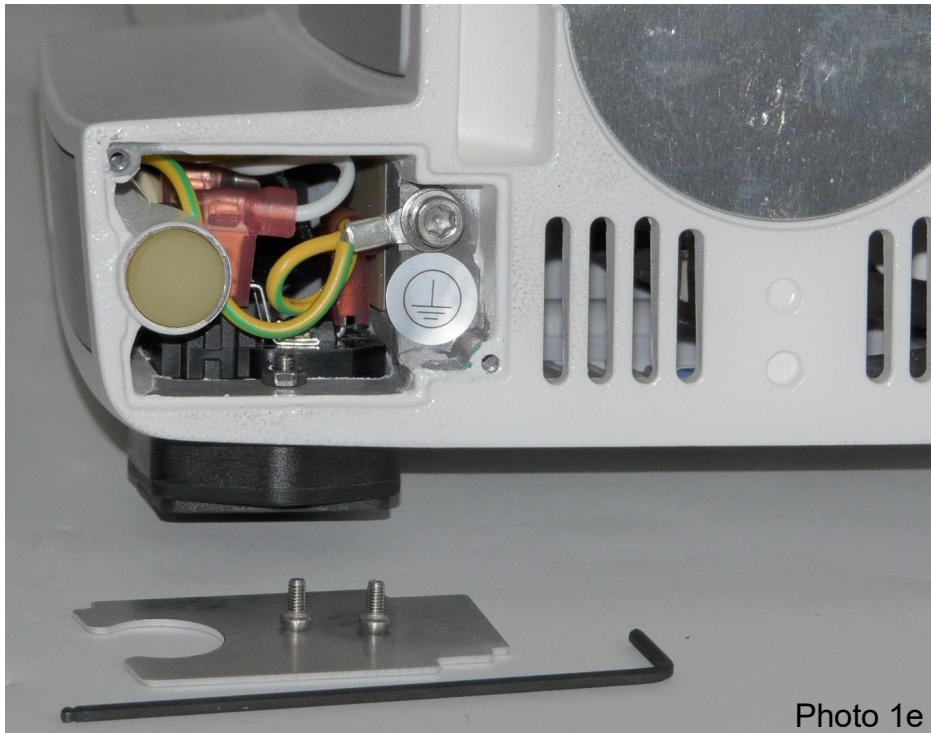


Photo 1e

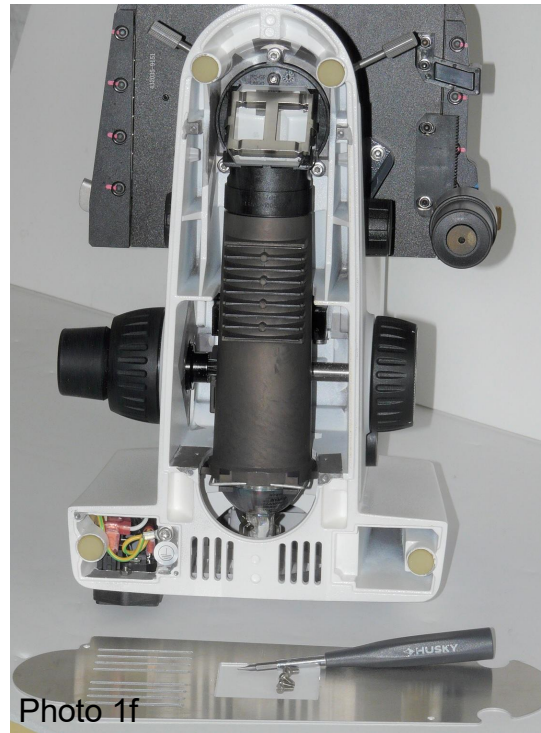


Photo 1f

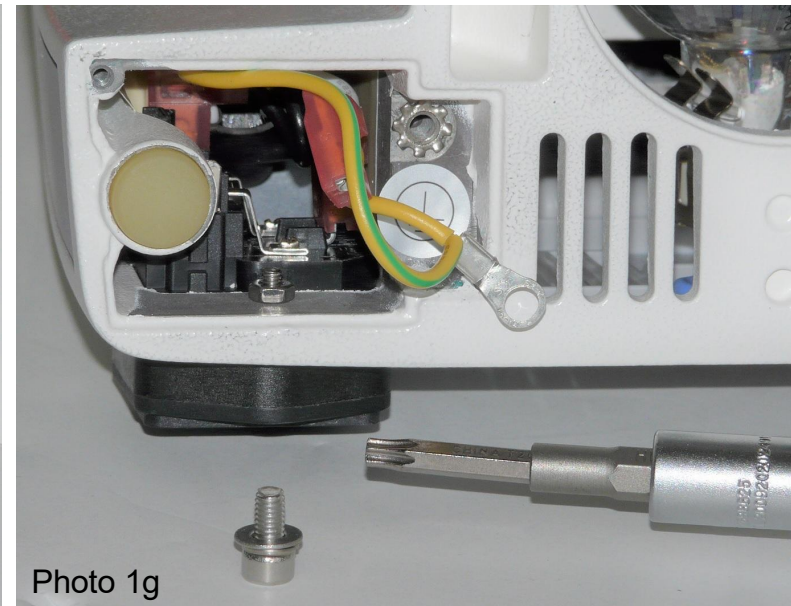


Photo 1g

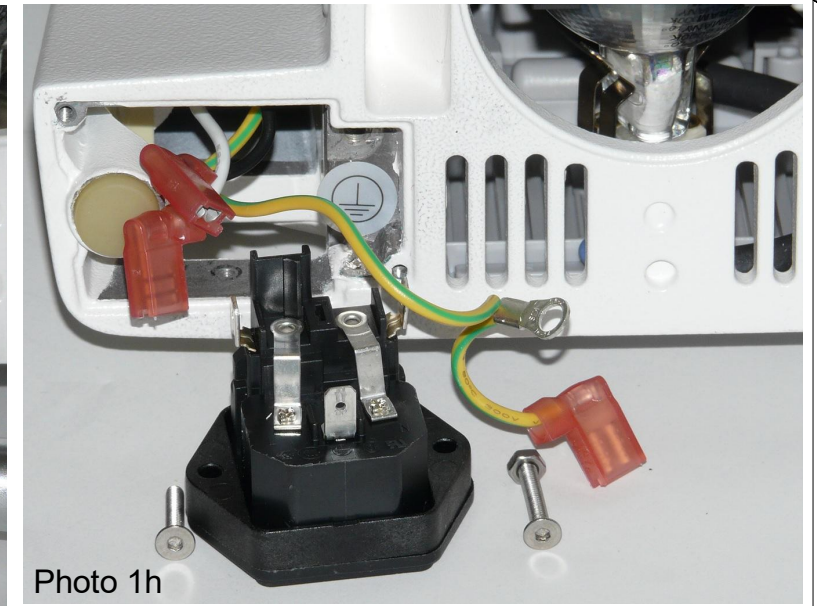


Photo 1h

(2) Unscrew and remove the ground wire and AC power block.

(1) Remove the AC power block cover and bottom cover of the microscope.

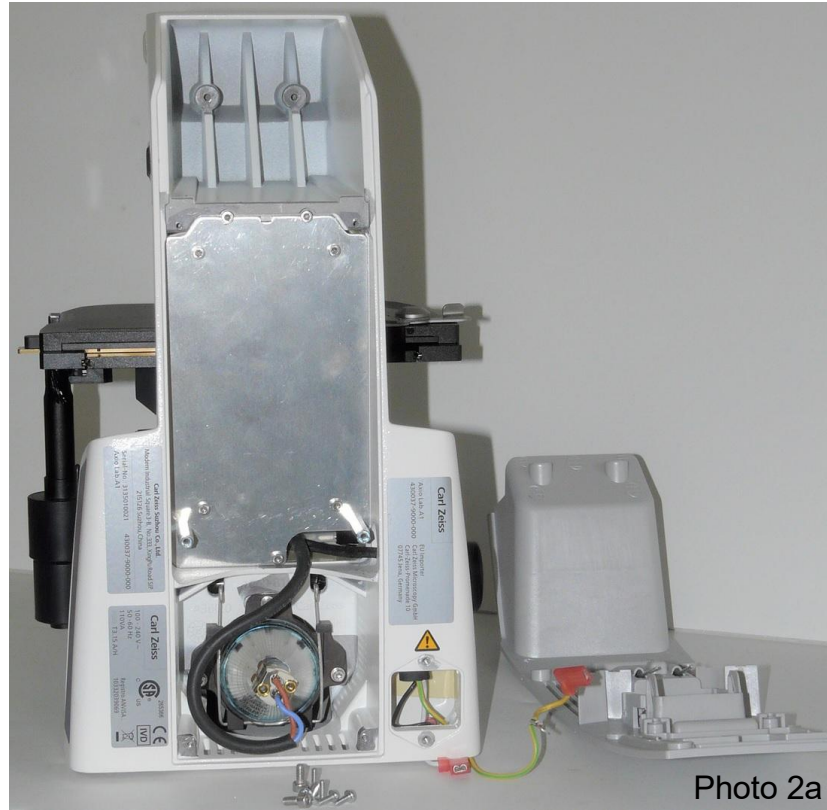
Be sure the AC power is disconnected.

© Copyright 2020 Nanodyne Measurement Systems. Document authorized for installation of Nanodyne equipment only. [www.nano-dyne.com](http://www.nano-dyne.com) Wayne Bonin 651-323-8592

Han-Seung Yang	2/20/2020
PN 11339 Zeiss AXIO LAB.A1	
Illuminator System Installation	REV 1
Instructions	
SHEET 2 OF 6	



Nanodyne Replacement Illuminator for Zeiss AXIO LAB.A1 Microscope Installation Instructions - Step 2. Remove old electronics, bulb and potentiometer.



(1) Remove the rear cover.



(2) Unscrew and remove the aluminum plate holding OEM PCB.

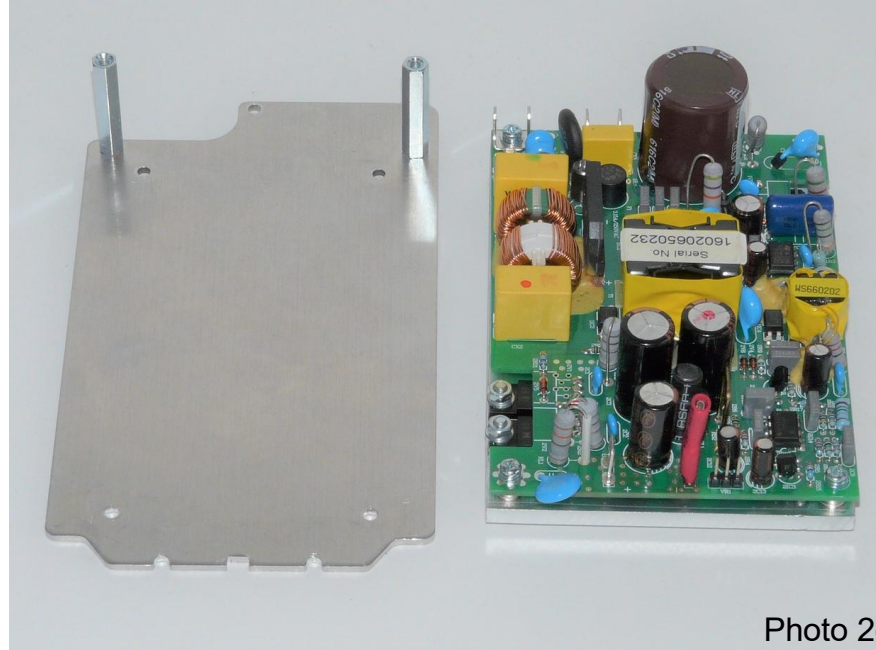


Photo 2c

(3) Unplug and remove the OEM PCB.

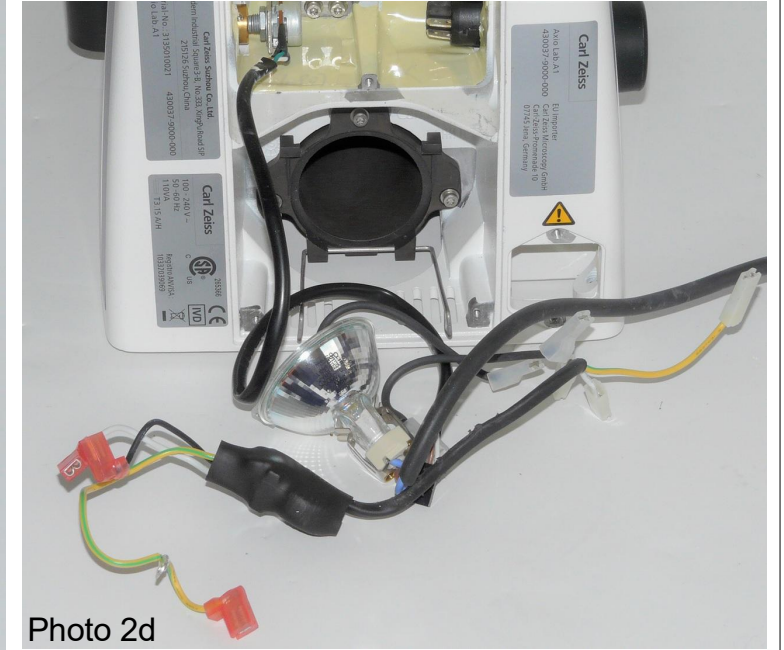


Photo 2d

(4) Pull out the original bulb and wires.



Photo 2e

(5) Loosen the set screw on the pot knob. Remove it.

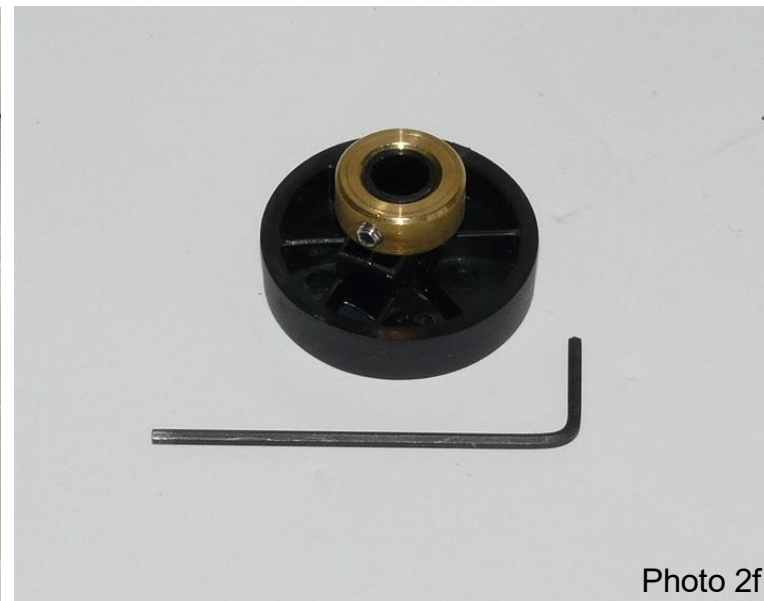


Photo 2f

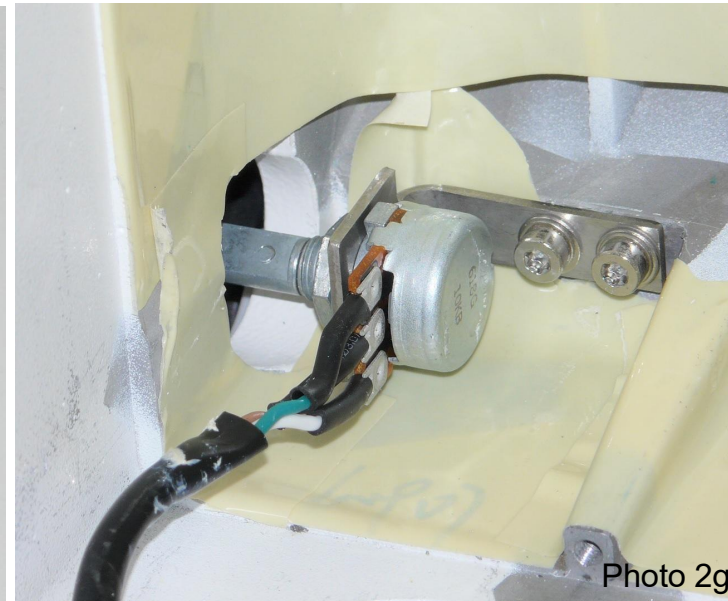


Photo 2g

(6) Pull the original intensity adjust pot out of the microscope.

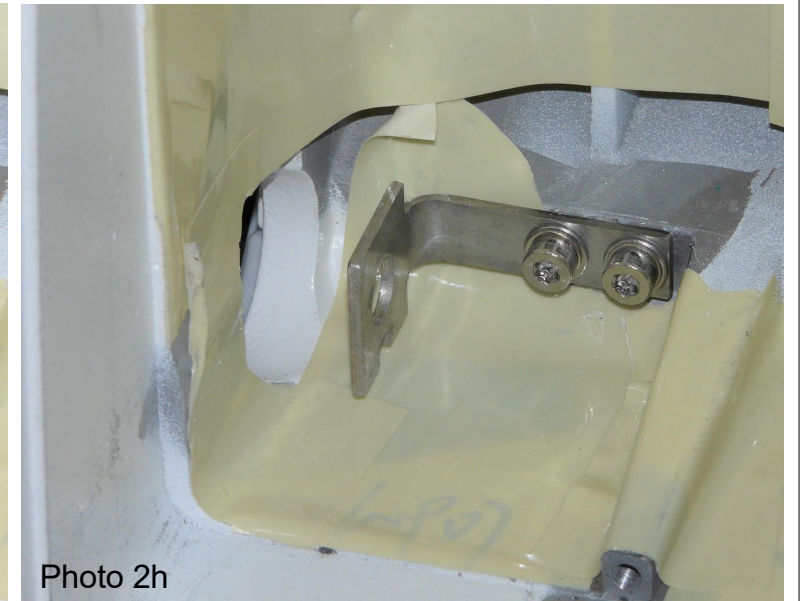


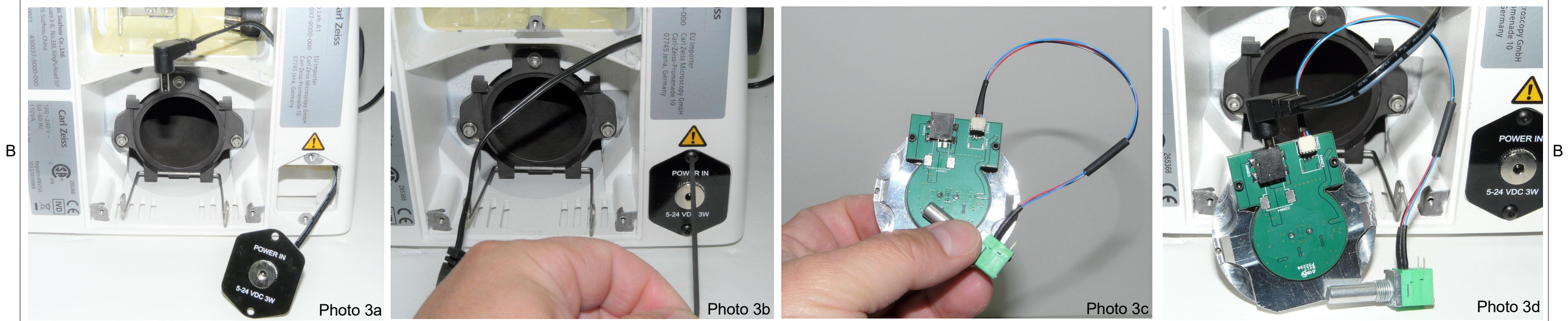
Photo 2h

Han-Seung Yang	2/20/2020
PN 11339 Zeiss AXIO LAB.A1	REV 1
Illuminator System Installation	Instructions
SHEET 3 OF 6	



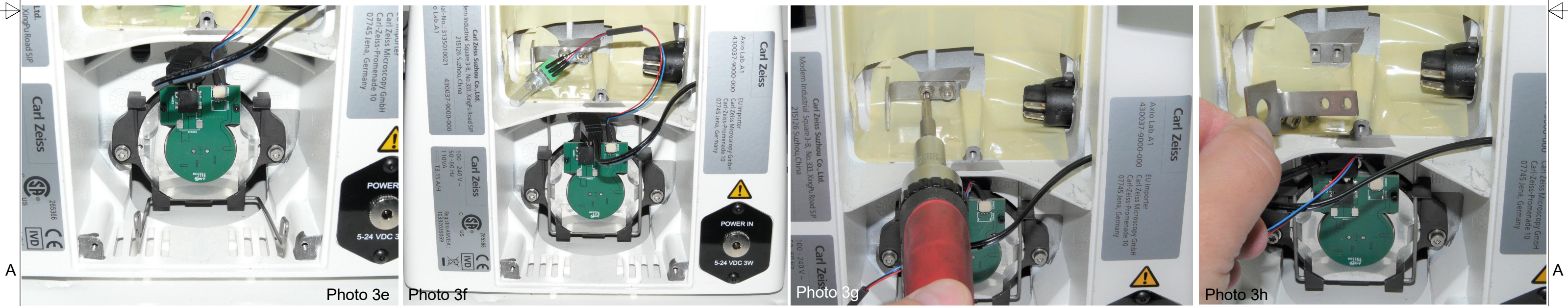
Nanodyne Replacement Illuminator for Zeiss AXIO LAB.A1 Microscope Installation Instructions - Step 3. Attach Nanodyne illuminator and pot cable assembly.

4 3 2 1



(1) Route the cable and install the new power plate-cable assembly as shown above.

(2) Connect the pot cable to the white connector on the illuminator circuit as shown in photo 3c. Note that the connector is keyed to fit only one way. Plug in power cable before put illuminator in place as there is tight space.



(3) Position the illuminator assembly as shown in the photo 3e, and secure with the metal clip as shown in photo 3f.

(4) Unscrew the bracket to install new potentiometer.

Han-Seung Yang	2/20/2020
PN 11339 Zeiss AXIO LAB.A1 Illuminator System Installation Instructions	REV 1
SHEET 4 OF 6	

4 3 2 1



Nanodyne Replacement Illuminator for Zeiss AXIO LAB.A1 Microscope Installation Instructions - Step 4. Install new adjustment pot and knob. Re-install rear cover.

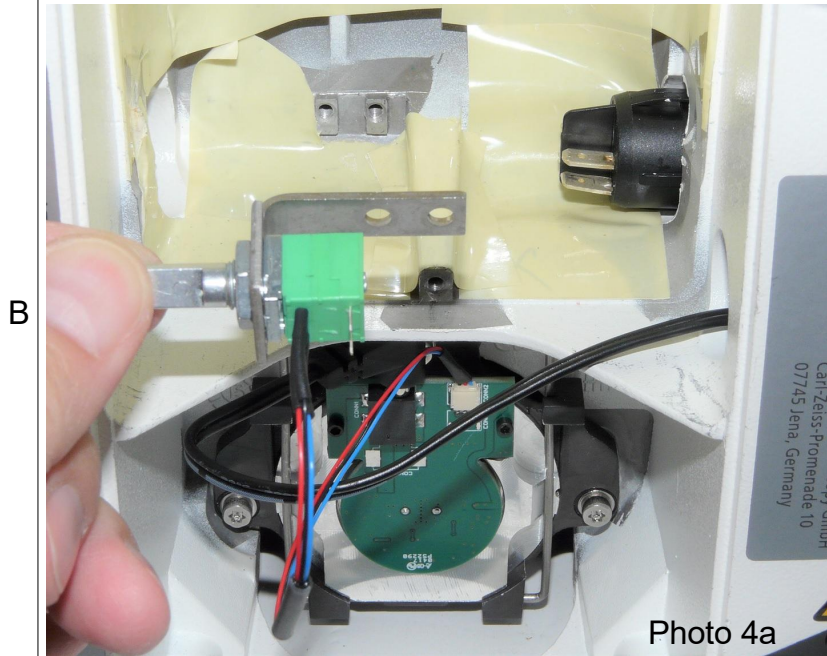


Photo 4a

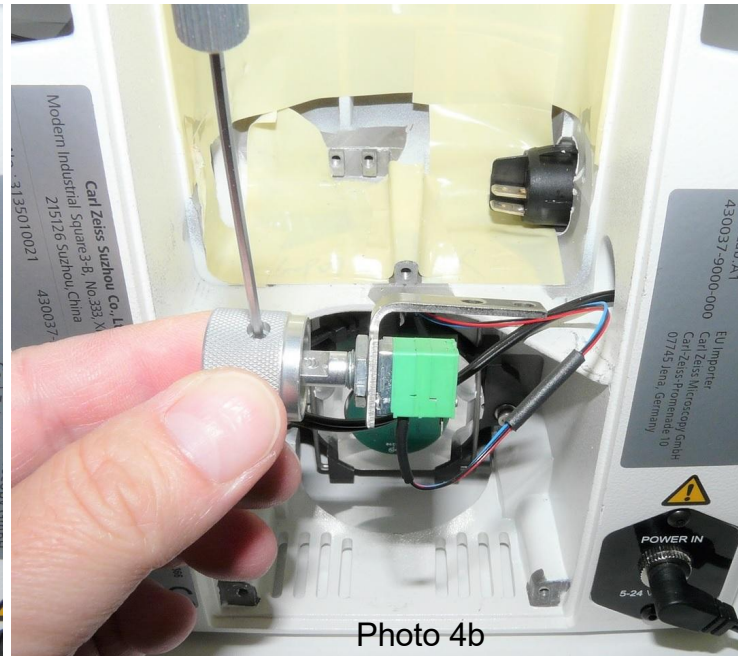


Photo 4b

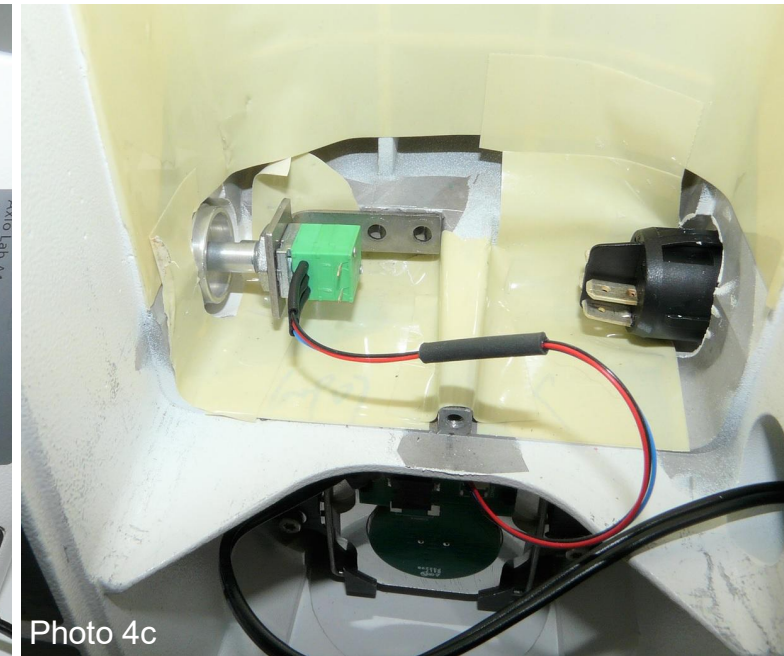


Photo 4c

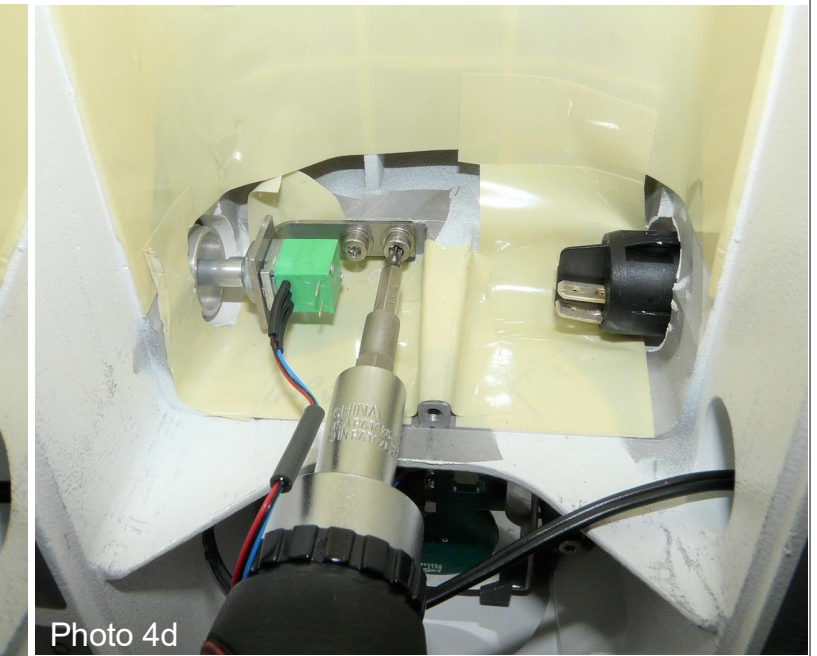


Photo 4d

(1) Install the new adjustment pot as shown in photo 4a, securing it in place with the nut and washer provided, then replace the knob provided as shown in photo 4b.

(2) Re-install the bracket back in place.

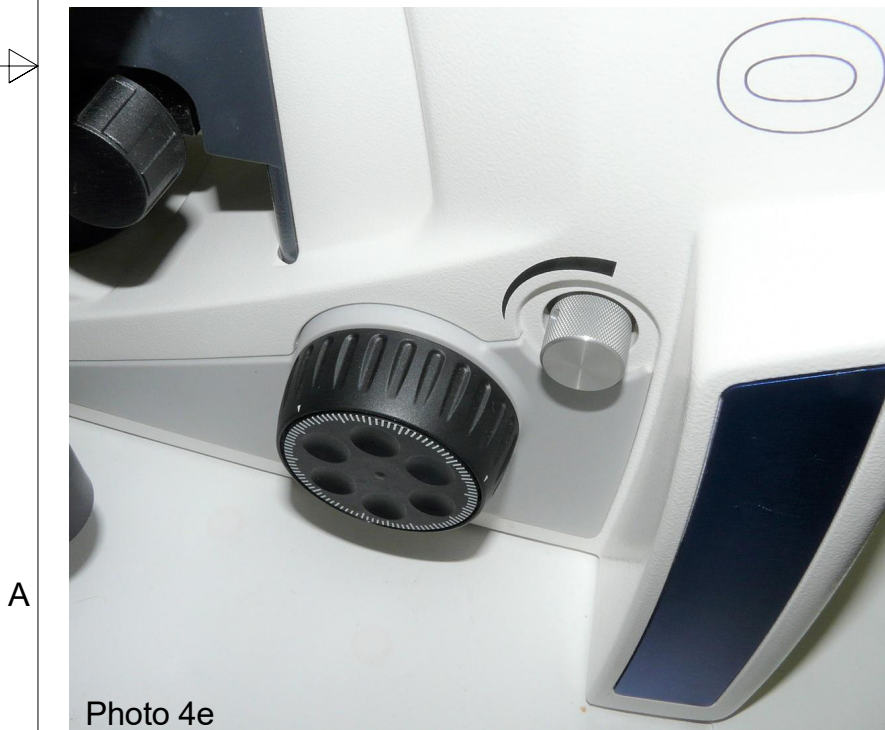


Photo 4e



Photo 4f

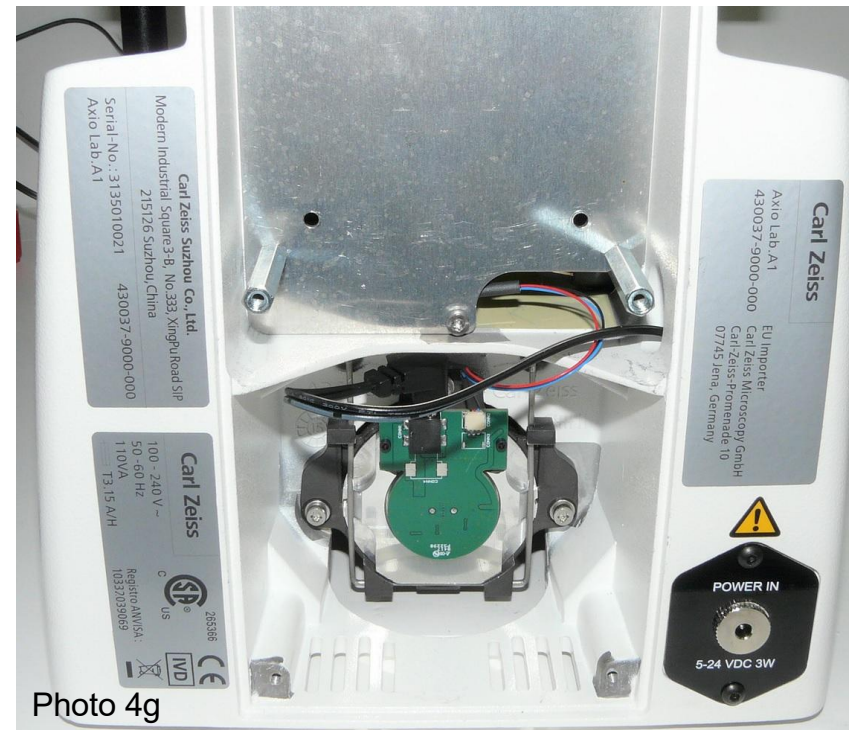


Photo 4g



Photo 4h

(3) New adjustment knob.

(4) Re-install the aluminum plate and secure cables.

(5) Re-install the rear cover.

Han-Seung Yang	2/20/2020
PN 11339 Zeiss AXIO LAB.A1 Illuminator System Installation Instructions	REV 1



Nanodyne Replacement Illuminator for Zeiss AXIO LAB.A1 Microscope Installation Instructions - Step 5. Re-install bottom cover and connect new power supply.



Photo 5a



Photo 5b

(1) Re-install the back cover.

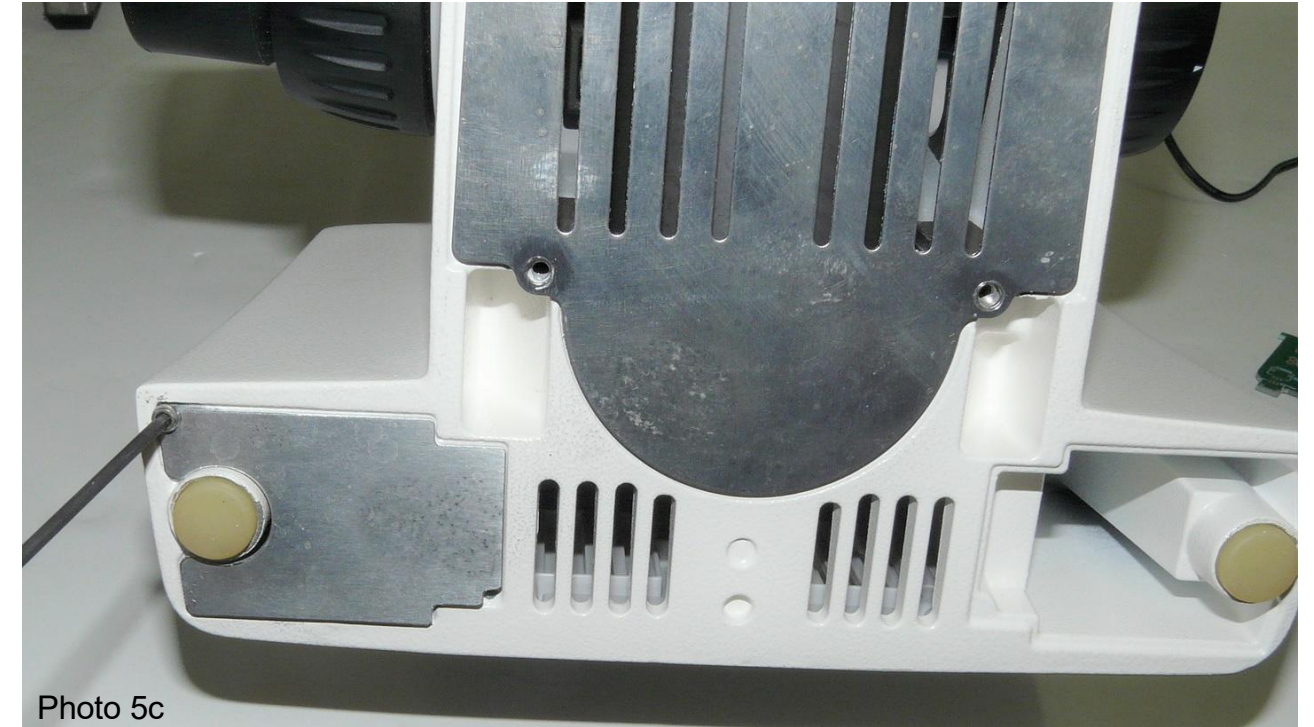


Photo 5c

(2) Re-install the AC power block bottom cover.

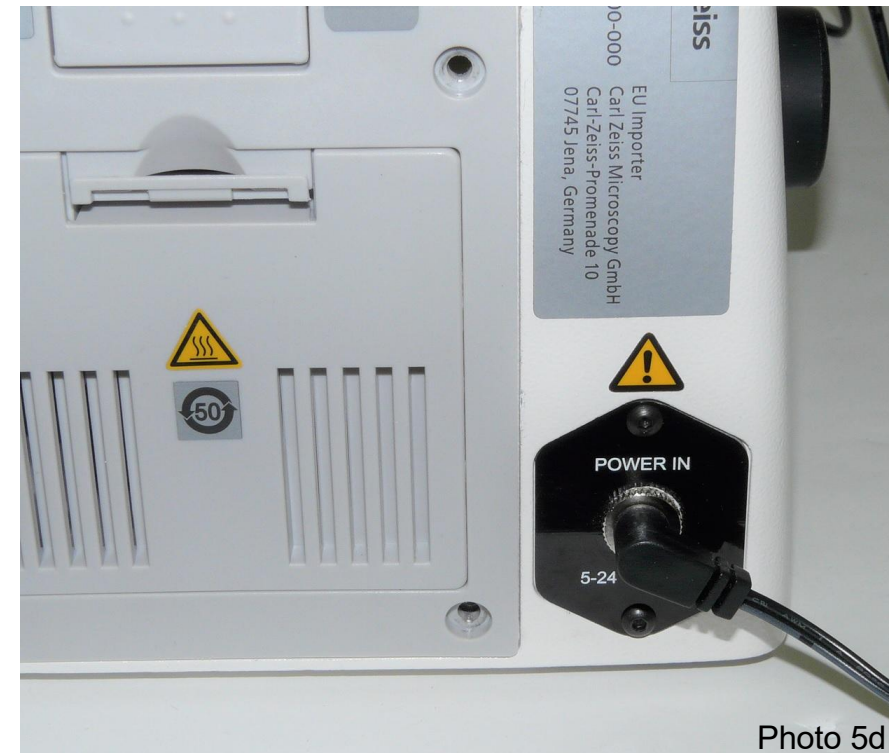


Photo 5d

(3) Plug the power supply cable into the DC power plate (photo 5d) and the illuminator is ready to operate.

Han-Seung Yang	2/20/2020
PN 11339 Zeiss AXIO LAB.A1 Illuminator System Installation Instructions	REV 1