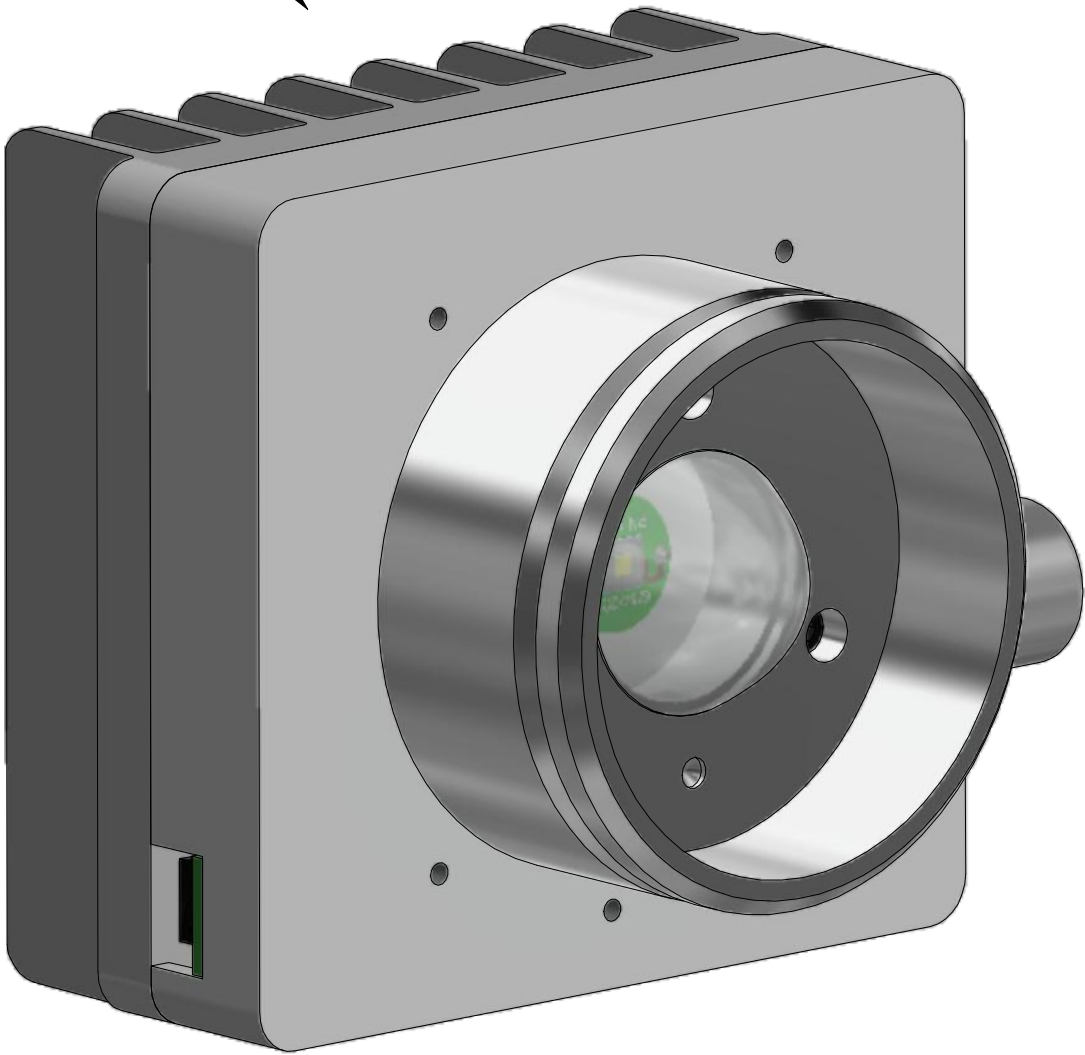


Nanodyne Replacement for Olympus IX70 Bottom Illuminator Installation Instructions: Included Items

PN 10394 Olympus BX50-51 Top Illuminator Assy

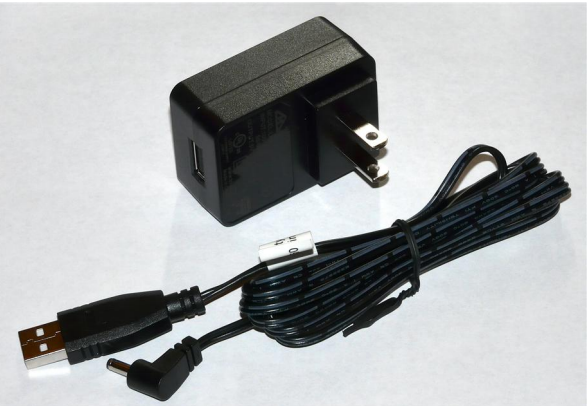


PN 11795 Remote Control Box Assy (upon request)



3M VHB tape to secure pot cable

The illuminator may be powered by plugging the cable into the power supply provided, or into a suitable USB port on a computer or other device.



PN 11163 Power Supply 5V 2.1A and  
PN 10734 Power Cable 1.35mm ID  
3.5mm OD x USB A 6 ft.



PN 10736 Rubber plug to block unused  
AC power receptacle.

Power supplies are subject to change due to availability and regulations.

Han-Seung Yang		2/10/2023	
PN 12195 Olympus IX70 Bottom Illuminator System Installation			REV 1
SHEET 1 OF 6			

Nanodyne Replacement for Olympus IX70 Bottom Illuminator Installation Instructions: Step 1. Remove OEM Lamp.



(2) Remove the original illuminator from the microscope by loosening the set screw.

**NOTE:** The photos in this instruction show IX70 microscope, while IX71 is slightly different, however the installation procedure is basically same.



(3) Empty light port after OEM lamp removed.

(1) This photo shows the microscope this illuminator system was designed for.

Han-Seung Yang		2/10/2023
PN 12195 Olympus IX70 Bottom Illuminator System Installation		REV 1
SHEET 2 OF 6		



**NOTE - If you have an original halogen top illuminator you are not replacing, be sure you are not removing its power source.**

The original 120/220VAC powered illuminator circuitry is completely obsoleted by the Nanodyne equipment which is powered by a universal input wall plug power supply with low voltage DC output.

We recommend completely removing the original power supply circuitry to eliminate any possibility of an electrical or fire hazard in case someone mistakenly connects AC power to the microscope in the future.



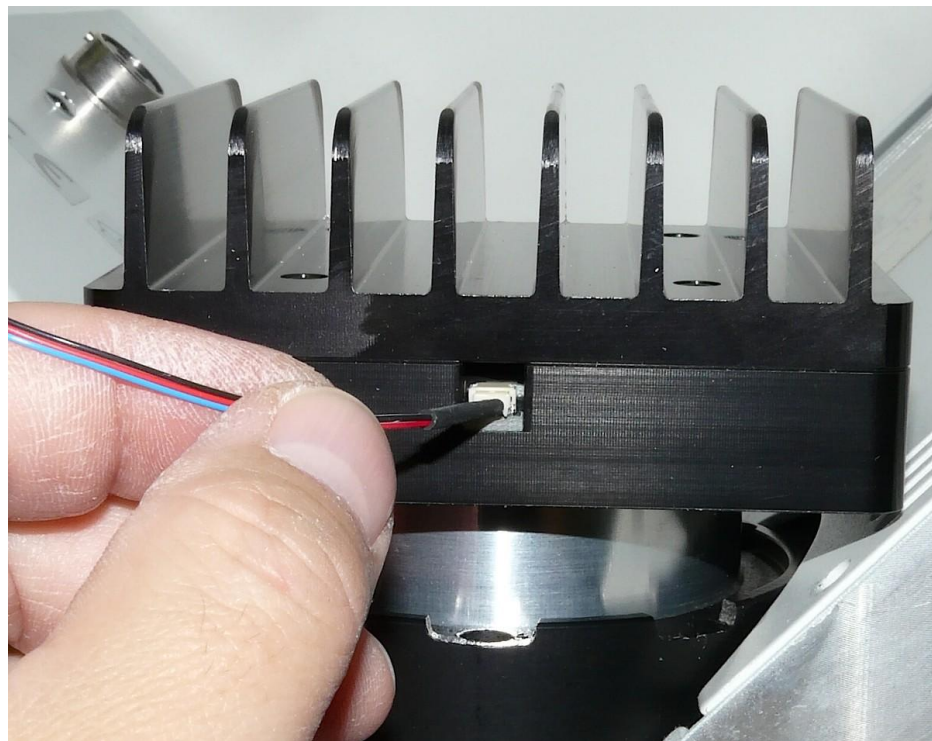
(1) Installing PN 10736 rubber plug in AC receptacle to deter connection of obsolete AC power.



(2) Insert the illuminator into the microscope port and secure it the same way as the original. Keep it pressed firmly in place until the microscope screw has secured it, to ensure good alignment.



Nanodyne Replacement for Olympus IX70 Bottom Illuminator Installation Instructions: Step 3. Install Nanodyne Illuminator, Connect Pot Cable.

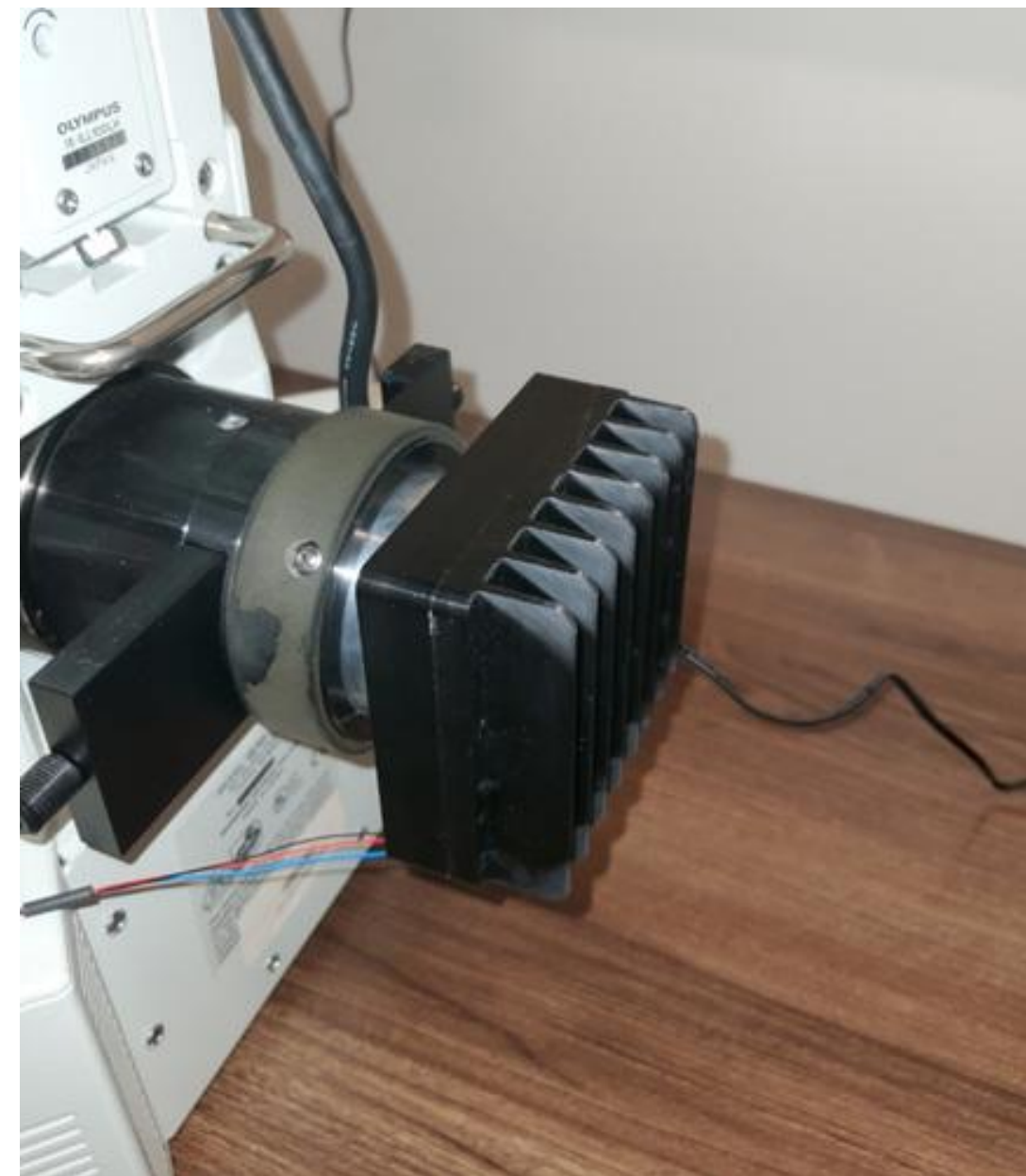


(1) The adjustment pot cable plugs into the connector at the bottom of the illuminator. The connector is keyed to only fit one way. See the next sheet for detailed instructions to be sure it is properly engaged.

**\*Note:** Intensity adjustment on the illuminator is standard setup. This page only applies to the remote adjustment option.



(2) (No photo) Secure the cable to the desired location with the red tape provided (shown on sheet 1). Loop the cable and secure it to take up any extra slack.



If you ever need to remove the cable, just firmly grab all 3 wires and pull it straight out with the speed. The connector is tougher than it looks.



Nanodyne Replacement for Olympus IX70 Bottom Illuminator Installation Instructions: Step 4 (continued). Connect Pot Cable (detail).

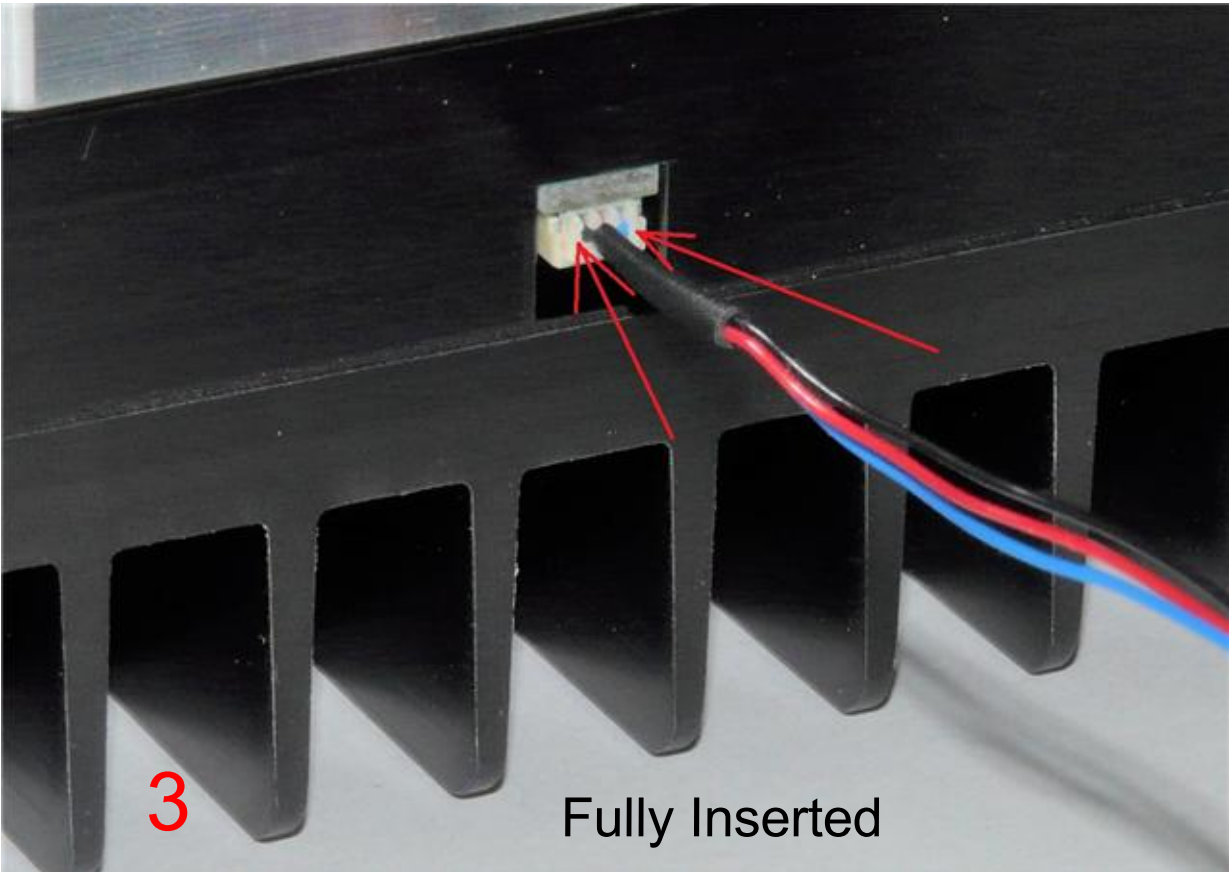
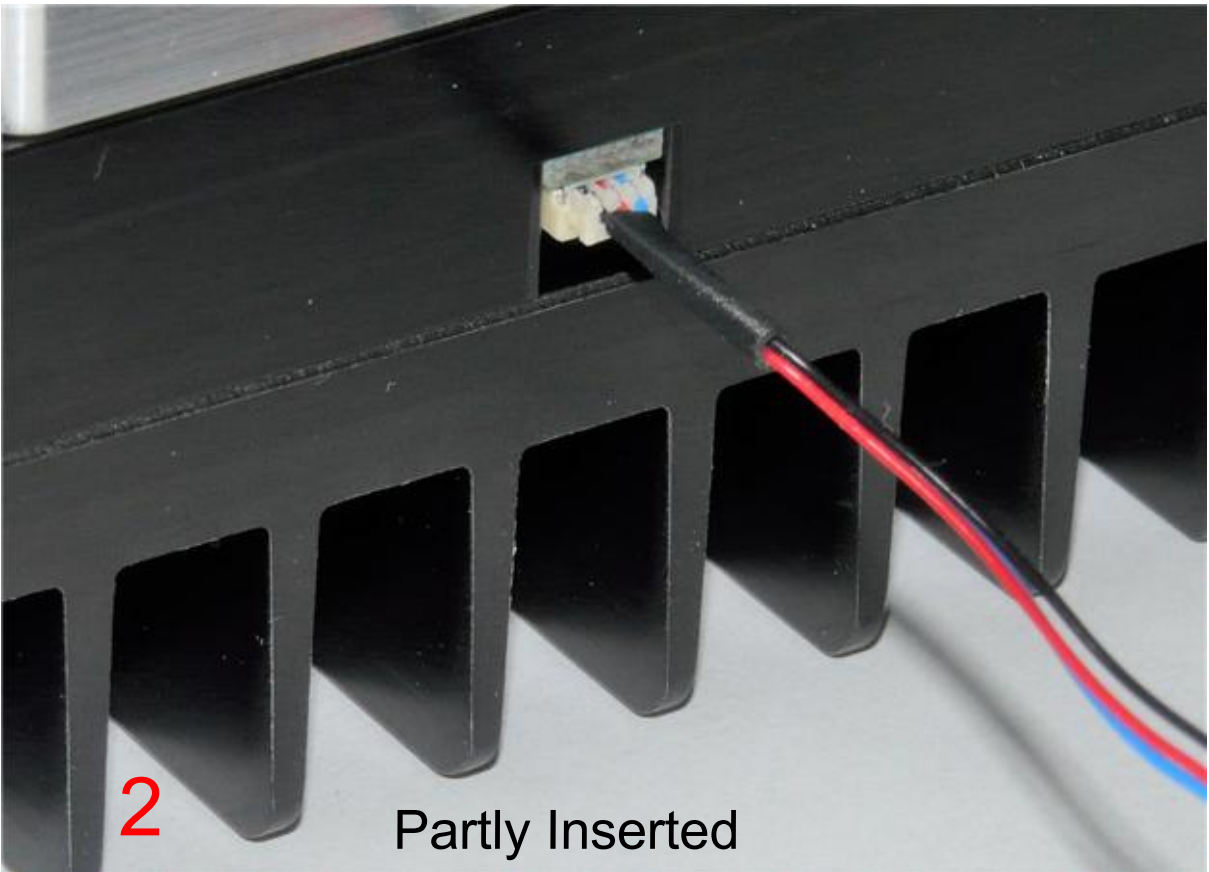
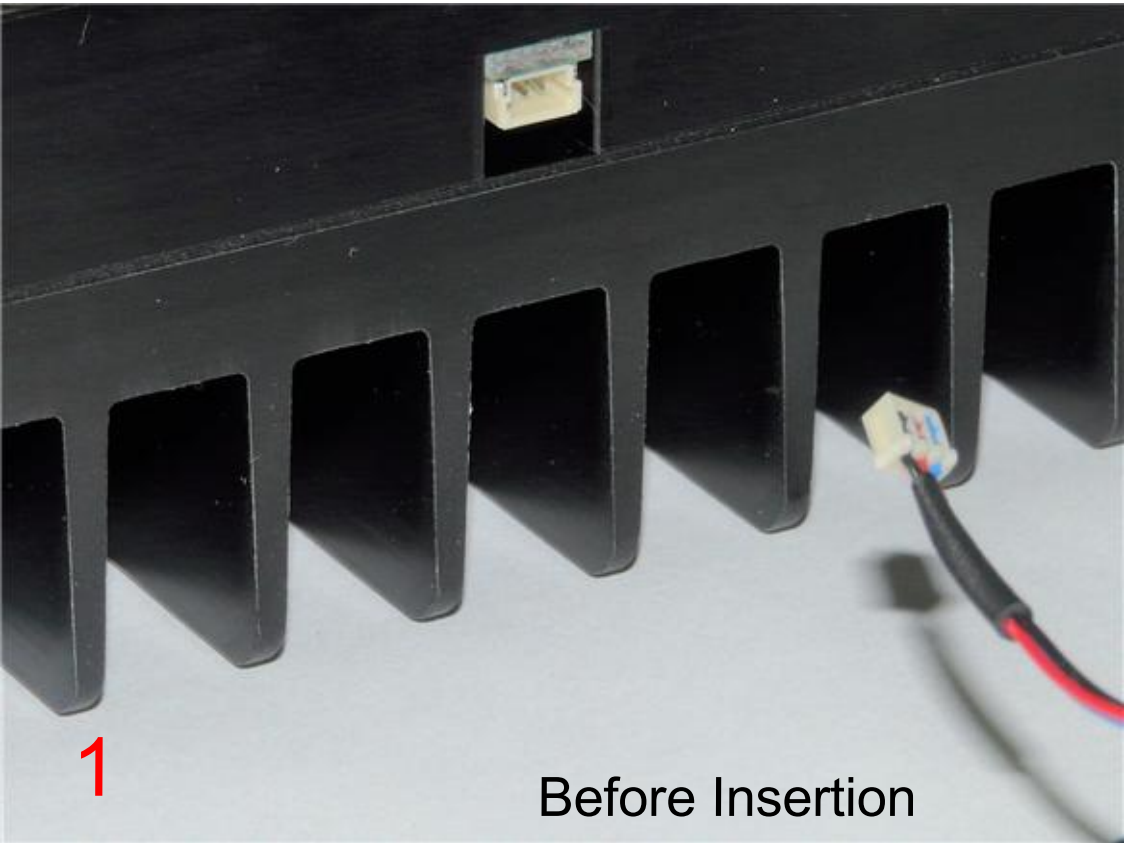
Connect the plug at the end of the Pot Cable Assembly to the mating socket of the illuminator, as shown in the pictures on this page. NOTE THAT THE PLUG IS KEYED TO ONLY GO INTO THE SOCKET ONE WAY, AS SHOWN.

Partially insert the plug into the mating socket of the illuminator by holding the wire next to the plug with your finger (photo 2).

Use your fingernails, if you have them, or tools like a tiny screwdriver or tweezers pushing on the side of the plug to fully insert it (photo 3).

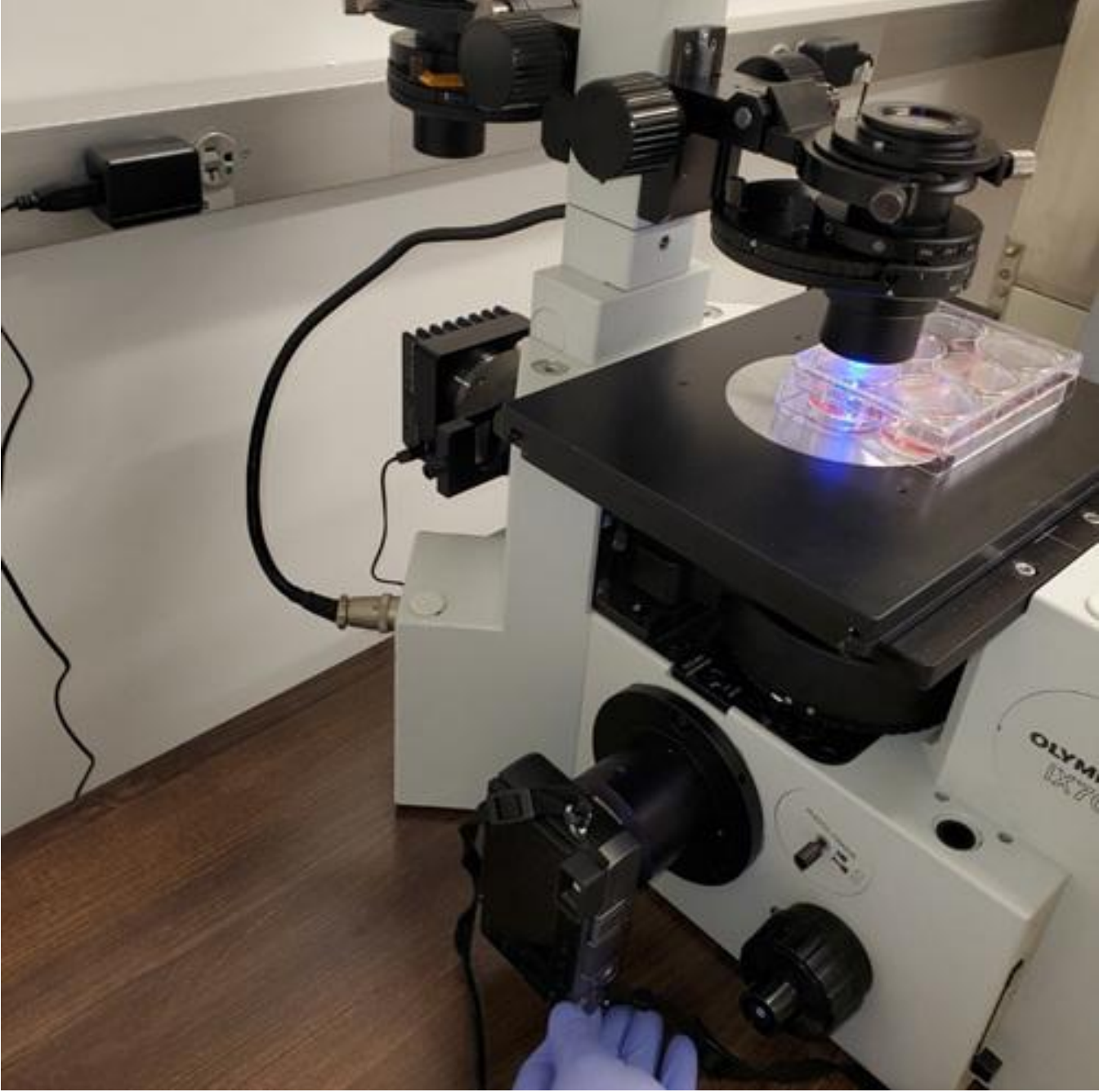
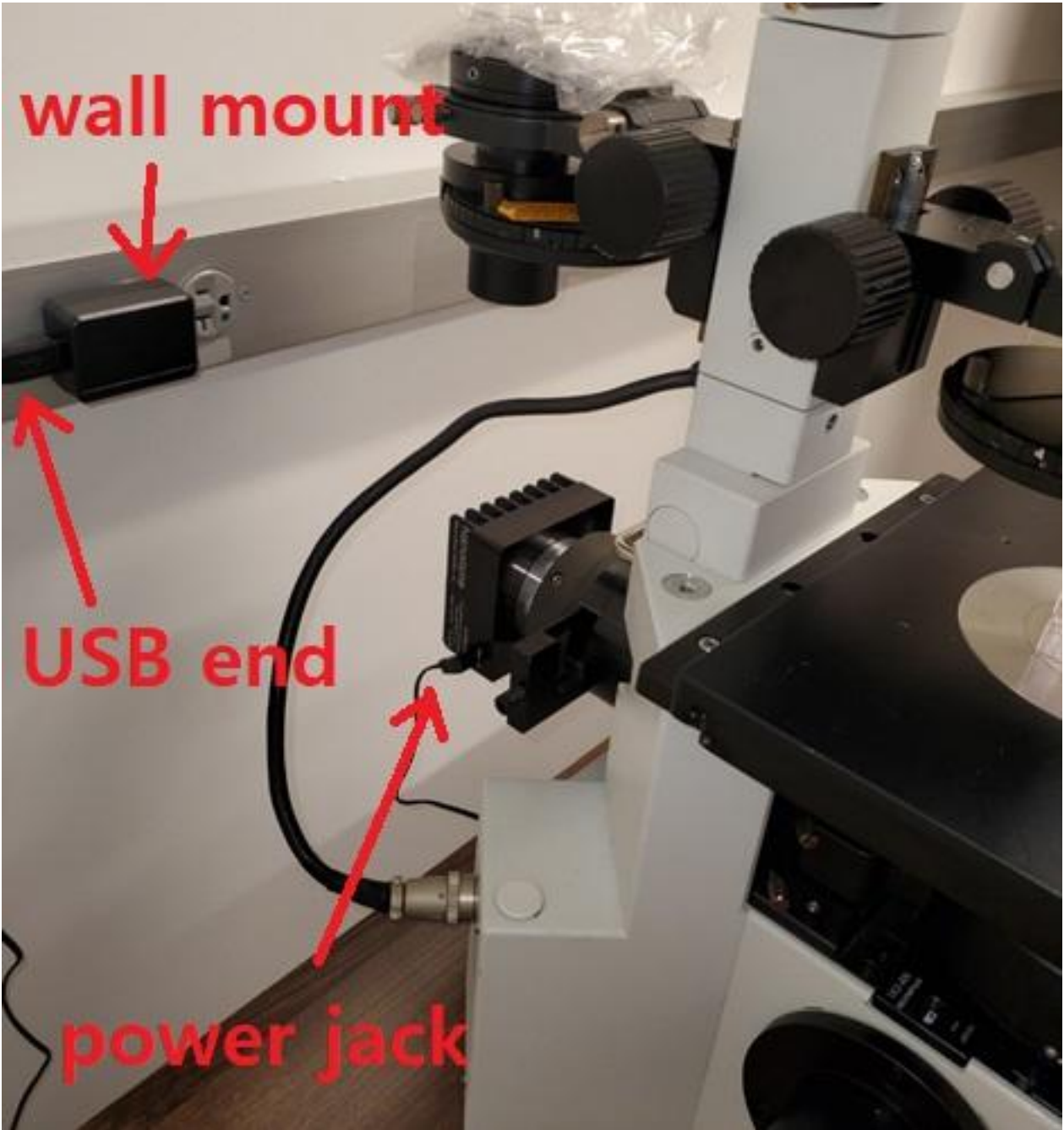
The socket cannot be fully engaged by pushing on the wires, as the wires would just collapse.

To disconnect it if needed, pull the wire straight out by firmly gripping the black heat shrink tubing.



Han-Seung Yang		2/10/2023	
PN 12195 Olympus IX70 Bottom Illuminator System Installation			REV 1
SHEET 5		OF	6

Nanodyne Replacement for Olympus IX70 Bottom Illuminator Installation Instructions: Step 5. Connect Power Supply - Installation Complete.



(1) Connect the USB end of the power cable to the power supply wall mount. Connect the power supply to an AC outlet. The unit is now ready to operate.