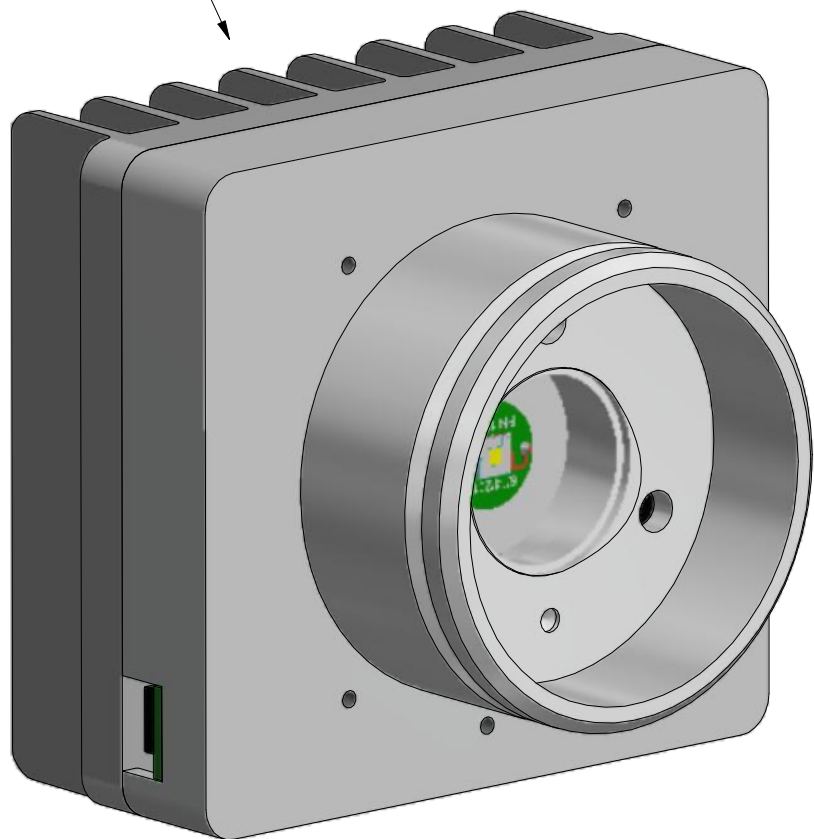


Nanodyne Replacement Illuminator for Olympus BX60 Bottom Illuminator: Included Items

PN 10407 BX50-51
Bottom illuminator Assy



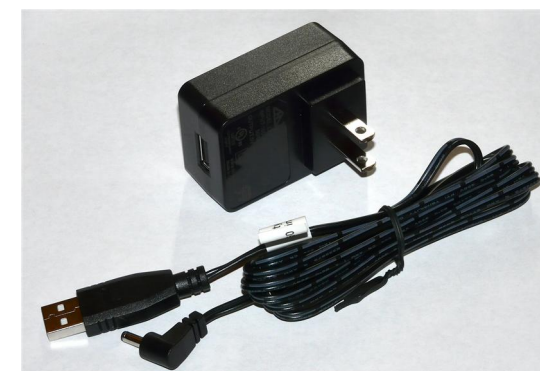
PN 11732 Olympus BX60
Pot Plate Cable Assembly
(15 in cable)



Tape to secure pot cable



PN 10736 Rubber plug to block
unused AC power receptacle.



PN 11163 Power Supply 5V 2.1A
and PN 10734 Power Cable 1.35mm
ID/3.5mm OD x USB A 6 ft.

The illuminator may be powered by plugging the cable into the power supply provided, or into a suitable USB port on a computer or other device.

Power supplies are subject to substitution without notice due to availability issues and changes in regulations.

Wayne Bonin	7/8/2022
PN 11733 Olympus BX60 Bottom Illuminator System	REV 2
SHEET 1 OF 1	