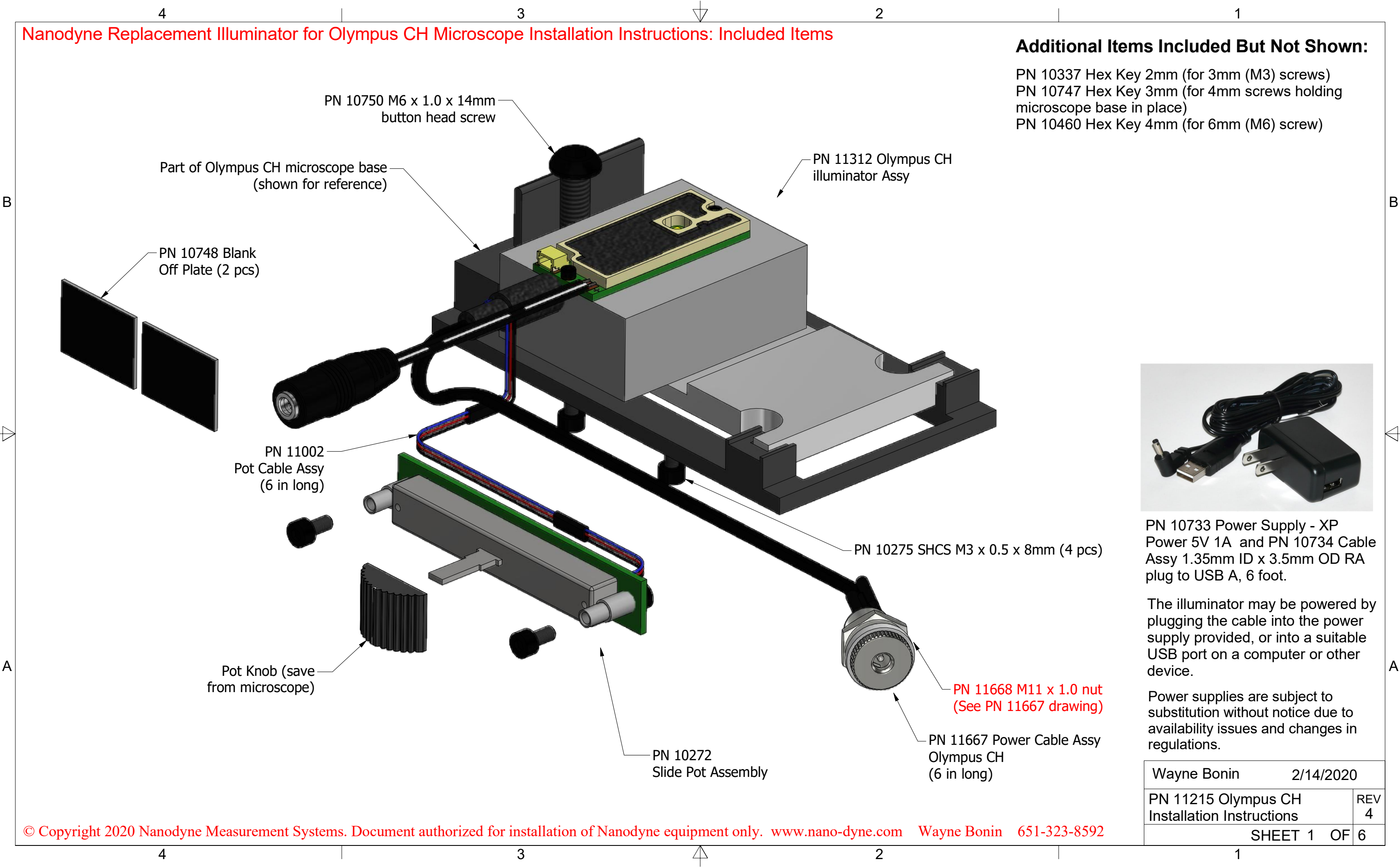


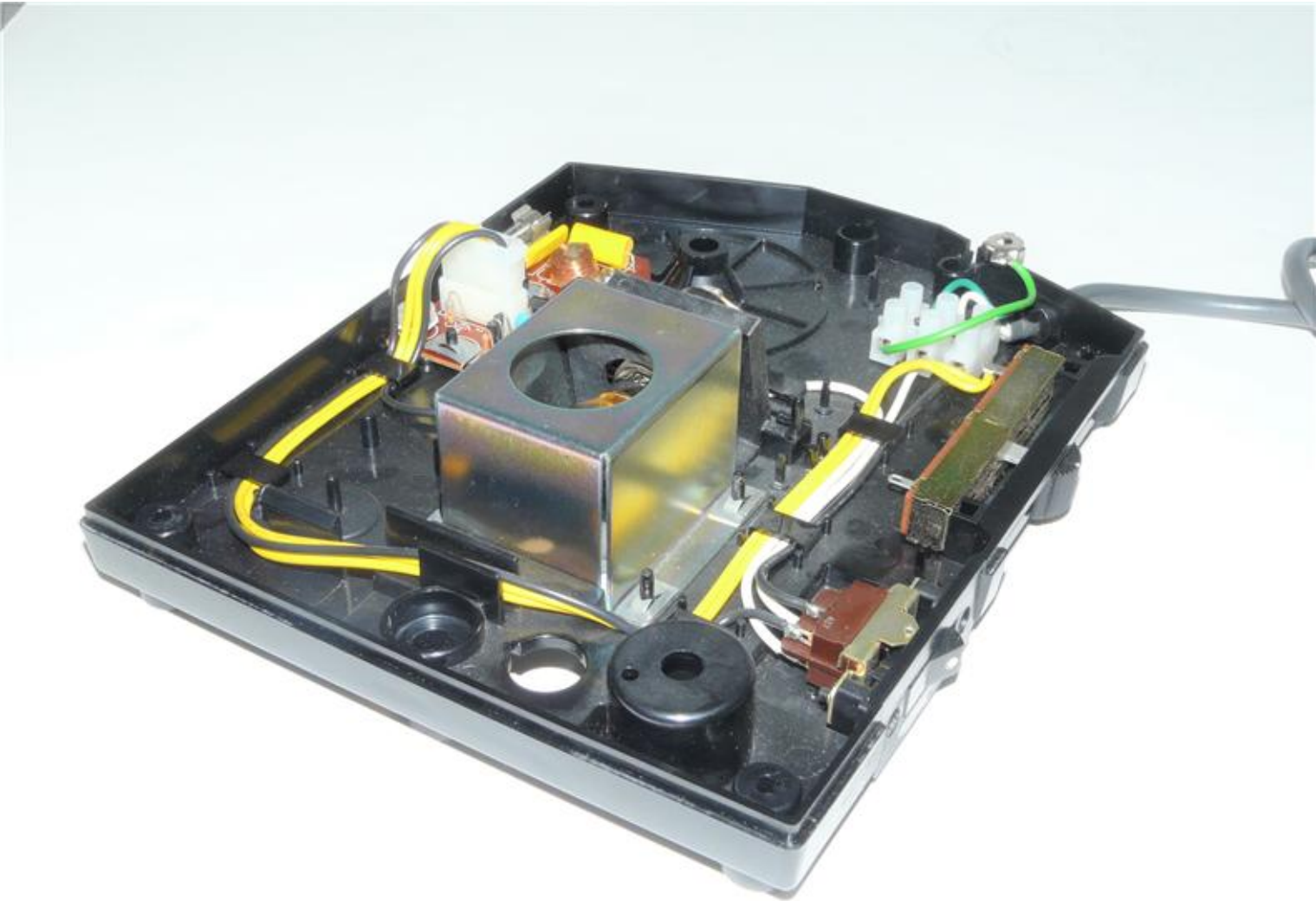
Nanodyne Replacement Illuminator for Olympus CH Microscope Installation Instructions: Included Items

Additional Items Included But Not Shown:

- PN 10337 Hex Key 2mm (for 3mm (M3) screws)
- PN 10747 Hex Key 3mm (for 4mm screws holding microscope base in place)
- PN 10460 Hex Key 4mm (for 6mm (M6) screw)



Nanodyne Replacement Illuminator for Olympus CH Microscope Installation Instructions: Step 1. Remove microscope base.



(1) Inside view of microscope base.



(2) Bottom view of microscope base. Note severe heat damaged plastic "trap door" which has cracked and broken. This will be replaced with an aluminum part.

Note - We were only sent this base for developing the replacement illuminator, so we have no photos of the whole microscope.

Wayne Bonin		2/14/2020
PN 11215 Olympus CH Installation Instructions		REV 4
SHEET 2		OF 6

Nanodyne Replacement Illuminator for Olympus CH Microscope Installation Instructions: Step 2. Remove Old Lamp Housing and Electrical Components.



(1) Remove the two clips holding the pivoting "trap door" bulb holder in place. This can be difficult.

Bend the part of the clip holding it to the plastic post with a needle nose plier so it does not lock onto the post.

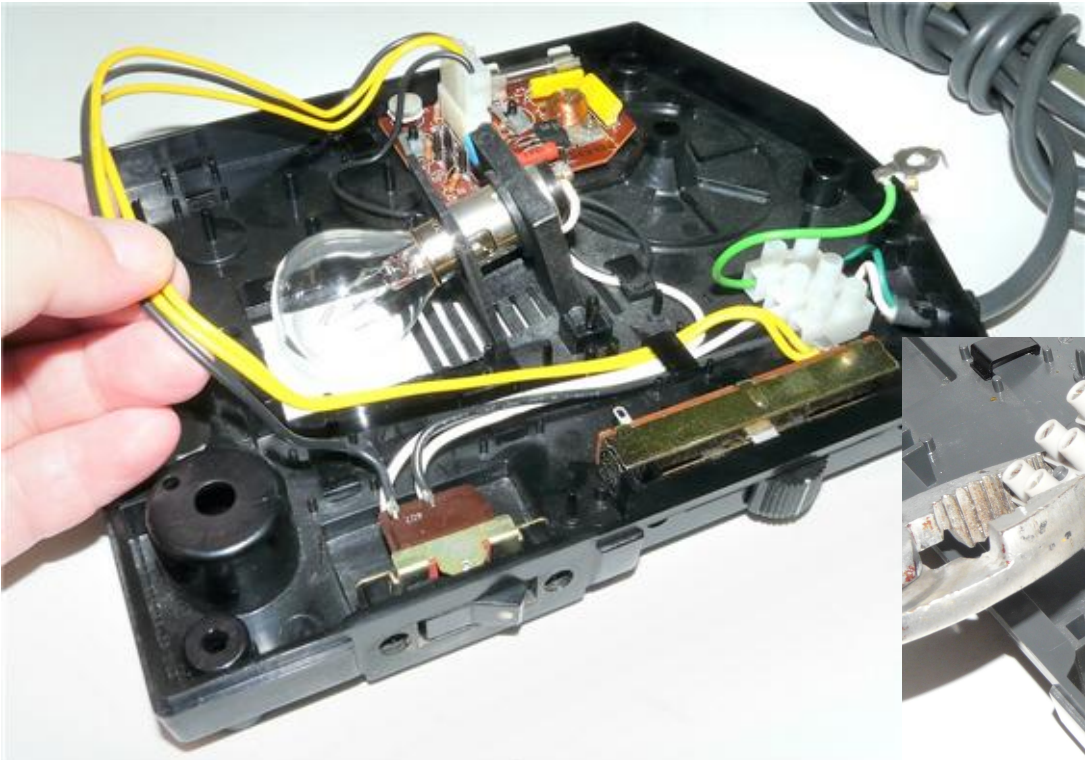


(3) Remove the four clips holding the heat shield in the same way, or just beak these ones off, as they will be removed with a wire cutter later. Then remove the heat shield.

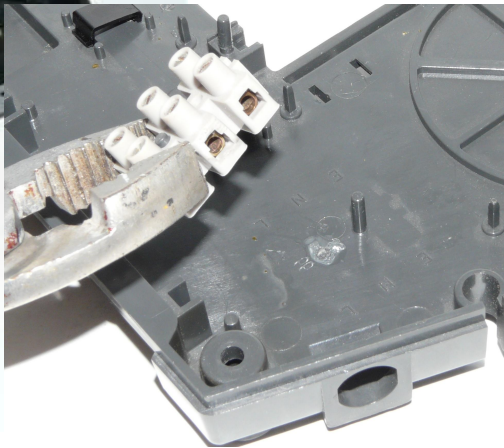


(2) Remove the clips with the plier.

If you do break the post you can use some epoxy to keep the new part in place.



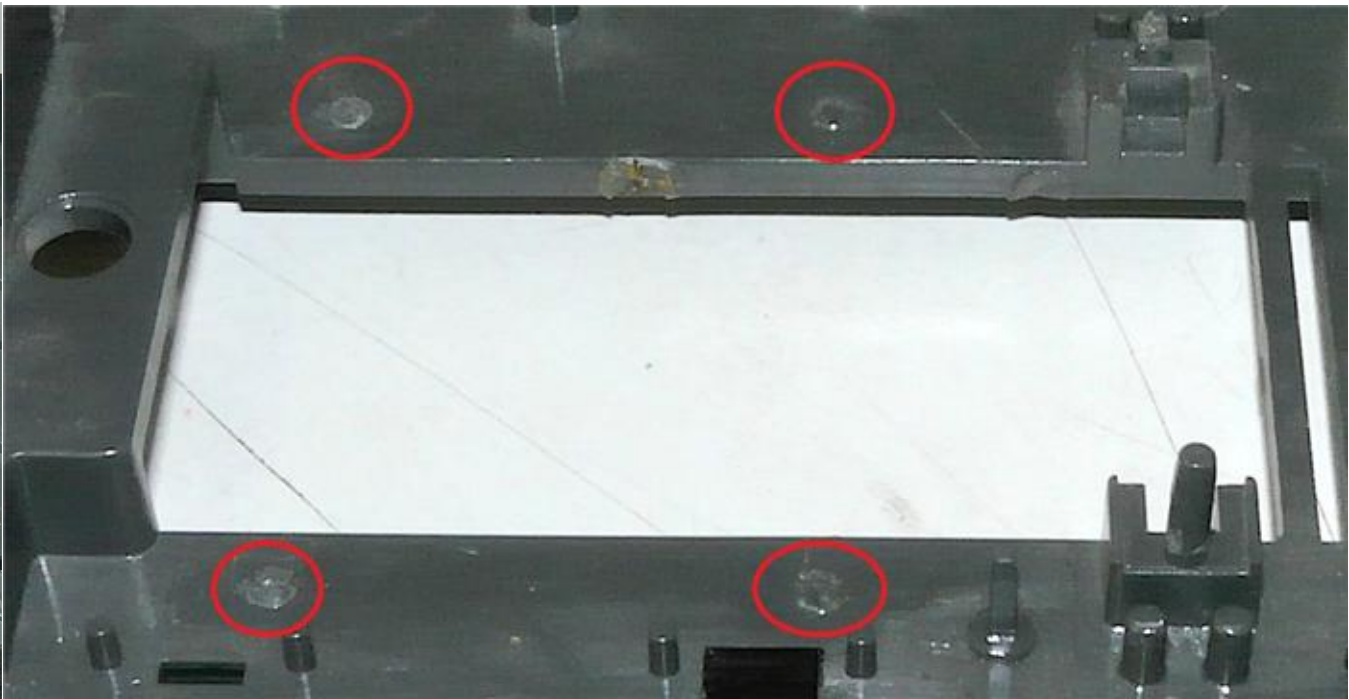
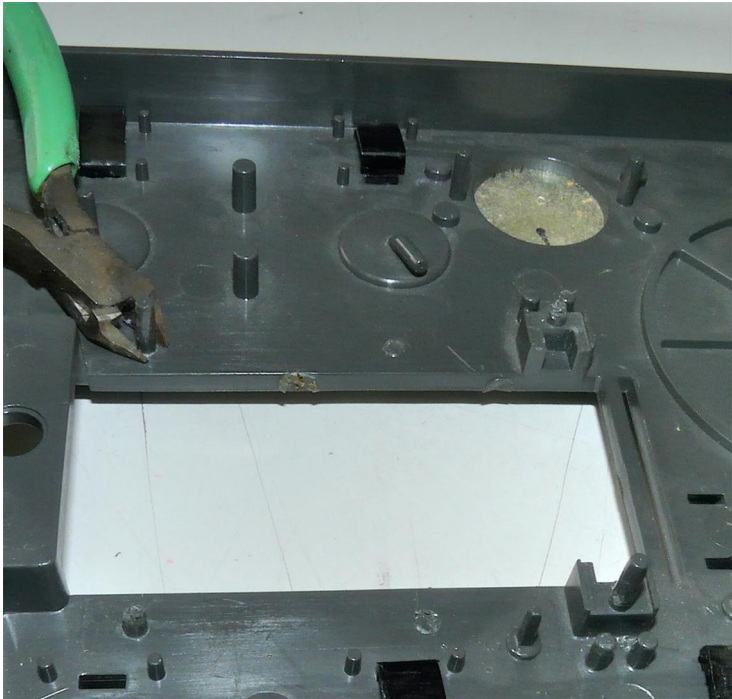
(4) Remove all of the electrical components. Nothing should be left attached to the base. (see next page)



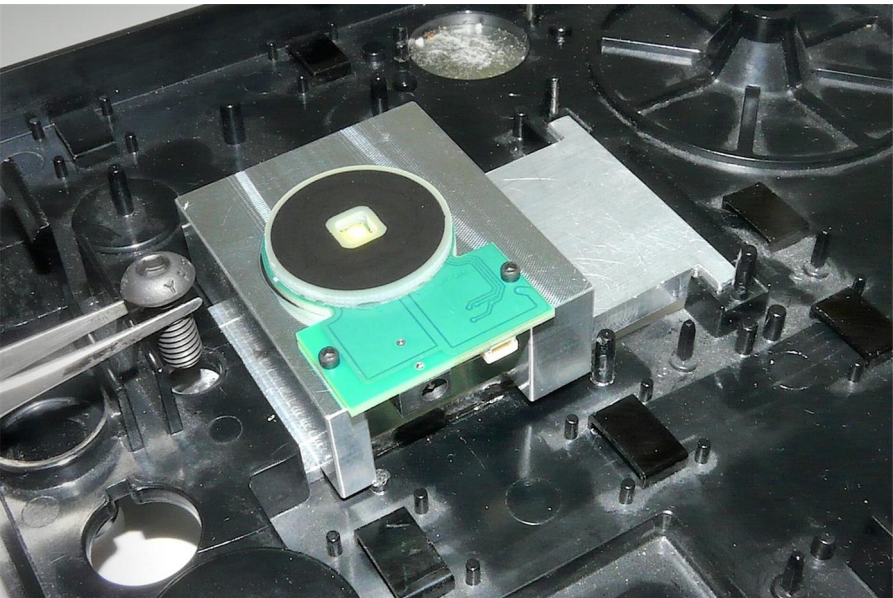
Nanodyne Replacement Illuminator for Olympus CH Microscope Installation Instructions: Step 3. Install New Illuminator and Slide Pot.



(1) Base with old parts removed.

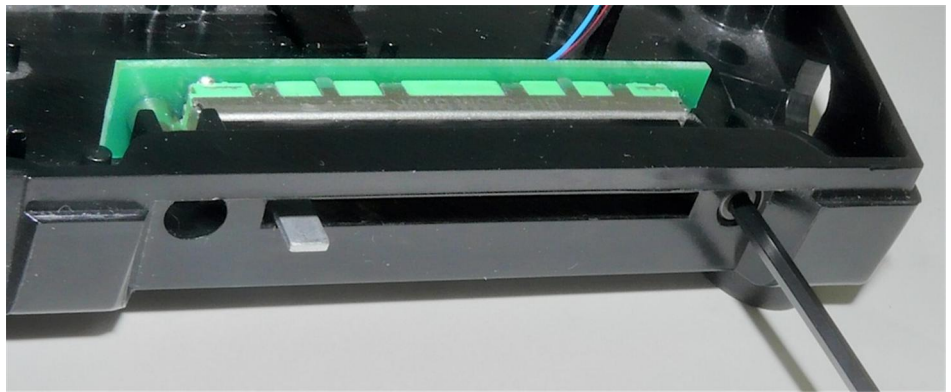
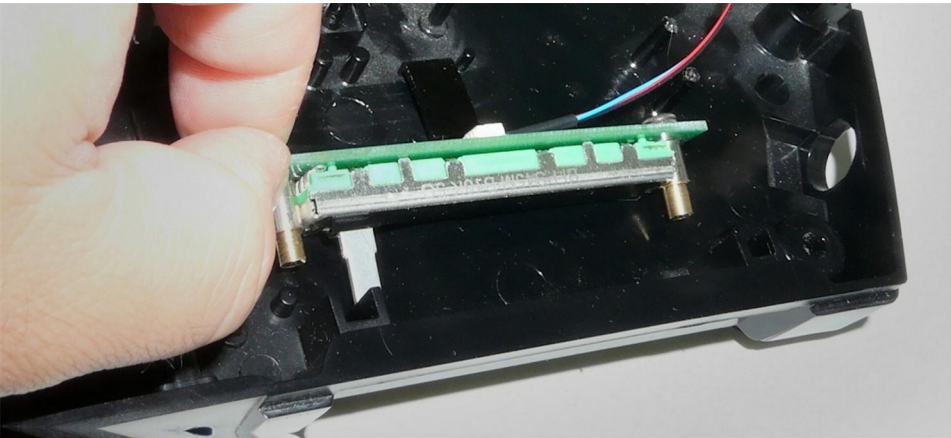


(2) Use a wire cutter to remove the four plastic pins that held the old heat shield.

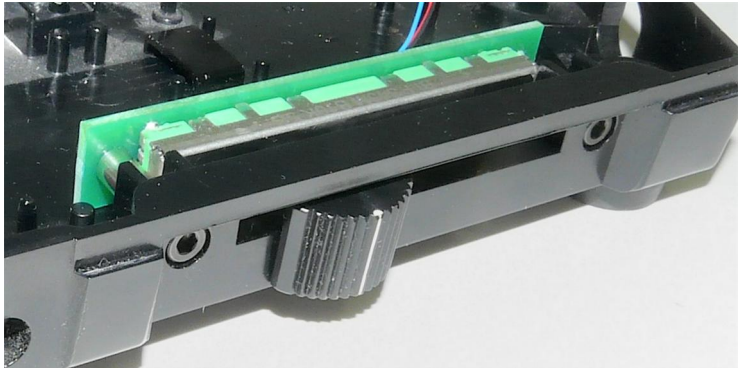
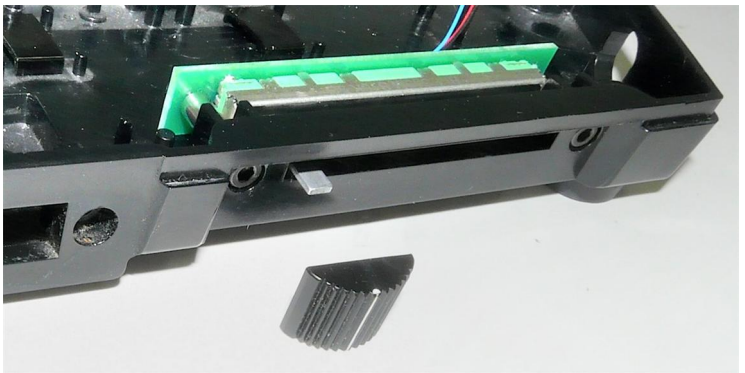


(3) Place the illuminator assembly in the base as shown above. Secure it with the M6 screw provided. Tighten the screw with the 4mm hex key. The base is plastic so don't tighten it too much.

(Optional) Install the clips on the two plastic pins at the other end, or use epoxy if you broke the pins, to secure the other end.



(4) Install the new pot where the old one was. Use the two new screws and 2mm hex key to secure it.

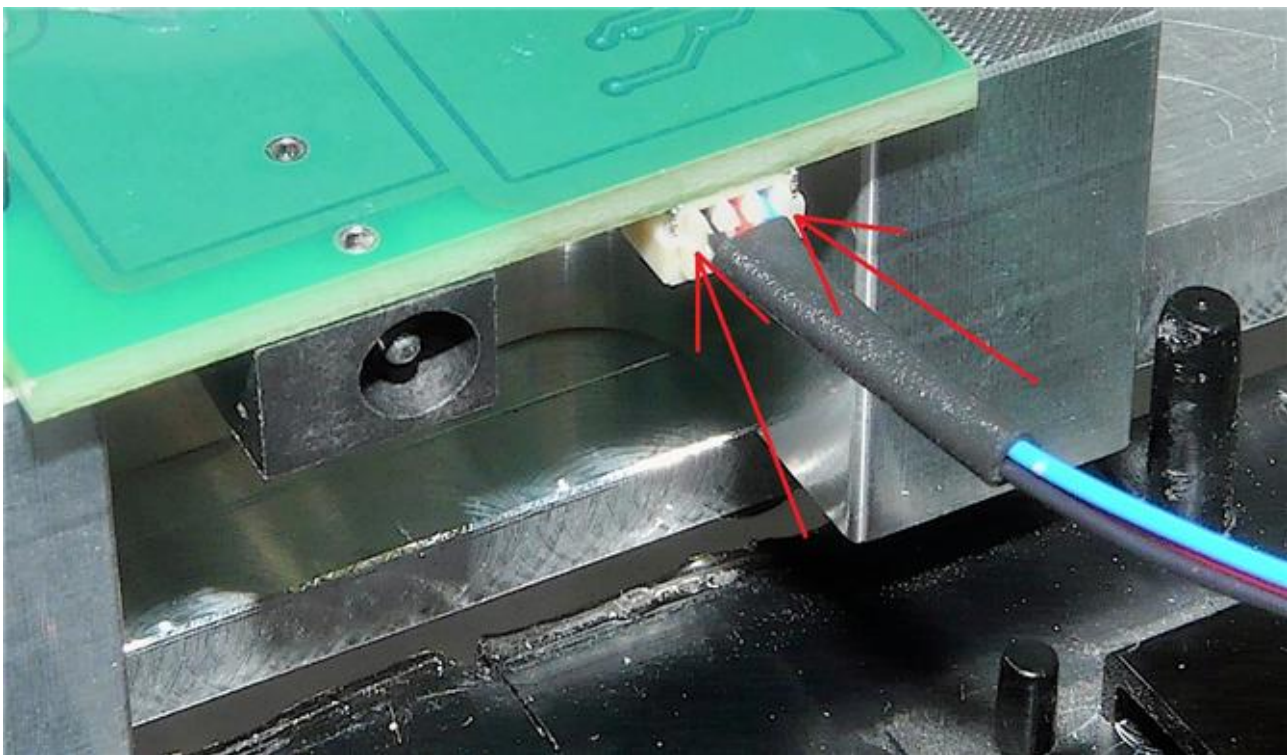


(5) Place the old knob on the new pot.

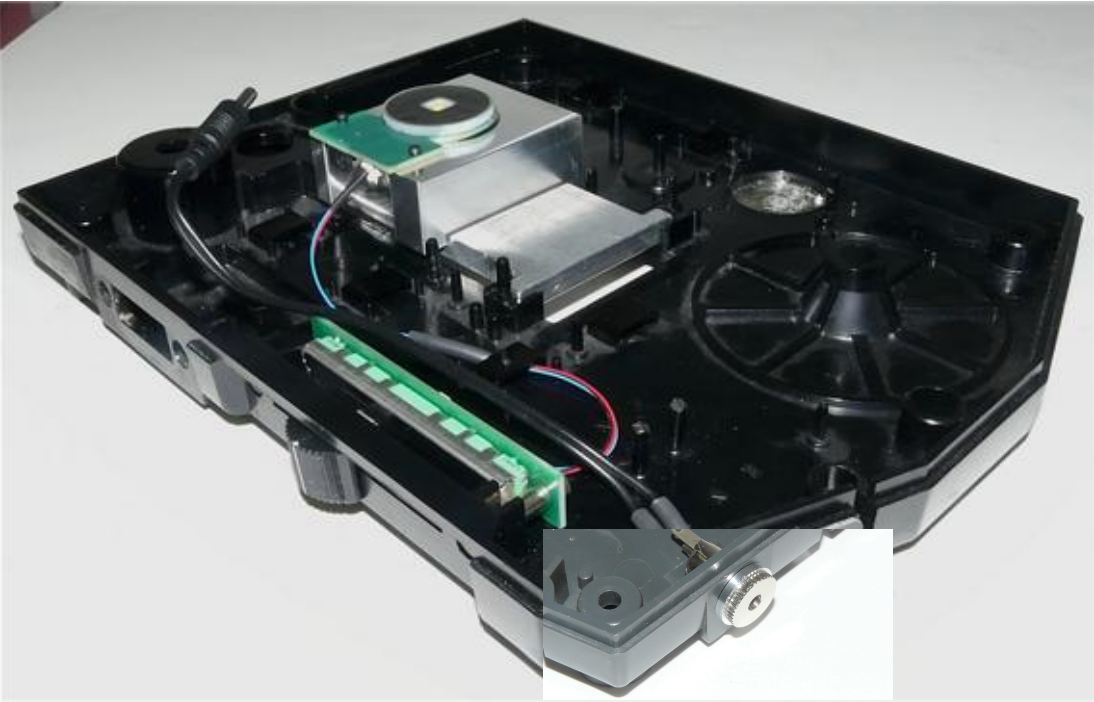
Nanodyne Replacement Illuminator for Olympus CH Microscope Installation Instructions: Step 4. Connect pot cable and install power cable assembly.



(1) Connect the pot cable to the connector under the circuit board as shown. It must be oriented as shown. It can be inserted as far as shown by holding the wires.



(2) Engage the connection by pushing on the sides of the plug with your fingernails, tweezers or a small screwdriver.



(3) Install the power cable assembly using PN 11668 M11 nut provided. Be sure the top edge is at or slightly below the lip on the base so it won't get pushed off when the base is attached to the microscope.



(4) Connect the power cable to the illuminator as shown above.

Nanodyne Replacement Illuminator for Olympus CH Microscope Installation Instructions - Step 6. Cover old power switch hole and connect new power supply.



(1) Remove the release film from the back of the blank off plates as shown above in the inset photo. Then attach them as shown in the main photo to cover the hole where the switch was.



(2) Connect the power supply and verify correct operation. After attaching the base to the microscope it will be ready to use.

Wayne Bonin		2/14/2020
PN 11215 Olympus CH Installation Instructions		REV 4
SHEET 6		OF 6