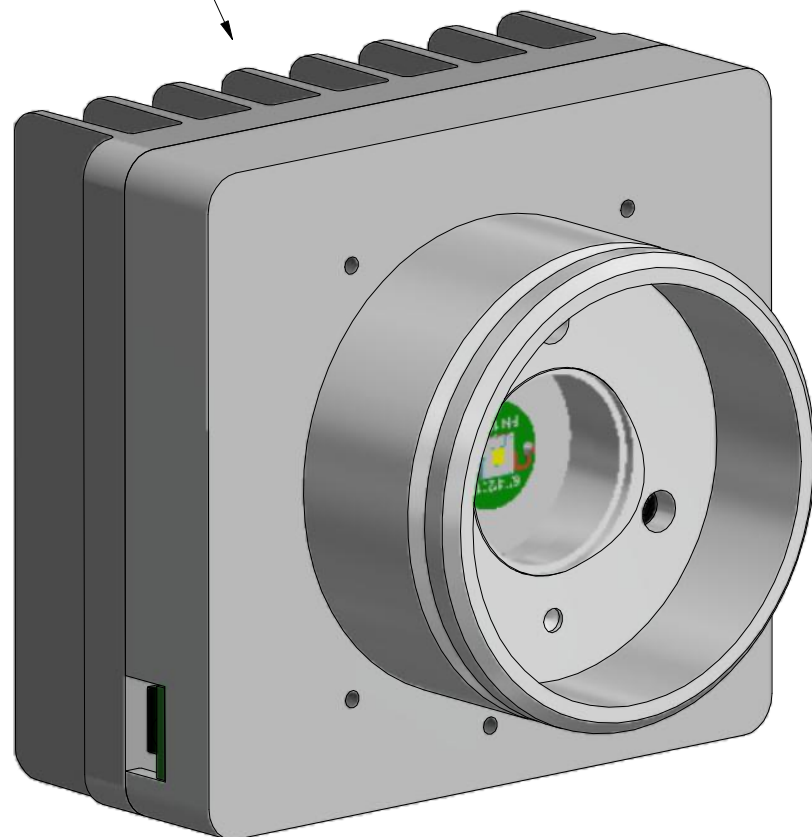


Nanodyne Replacement Illuminator for Olympus BX50 Bottom Illuminator: Included Items

PN 10407 BX50-51
Bottom illuminator Assy



PN 10584 Olympus BX50
Pot Plate Cable Assembly
(15 in cable)



Tape to secure pot cable



PN 10736 Rubber plug to block
unused AC power receptacle.



PN 11163 Power Supply 5V 2.1A
and PN 10734 Power Cable 1.35mm
ID/3.5mm OD x USB A 6 ft.

The illuminator may be powered by plugging the cable into the power supply provided, or into a suitable USB port on a computer or other device.

Power supplies are subject to substitution without notice due to availability issues and changes in regulations.

Wayne Bonin	7/8/2022
PN 10408 Olympus BX50 Bottom Illuminator System	REV 6
SHEET 1	OF 1