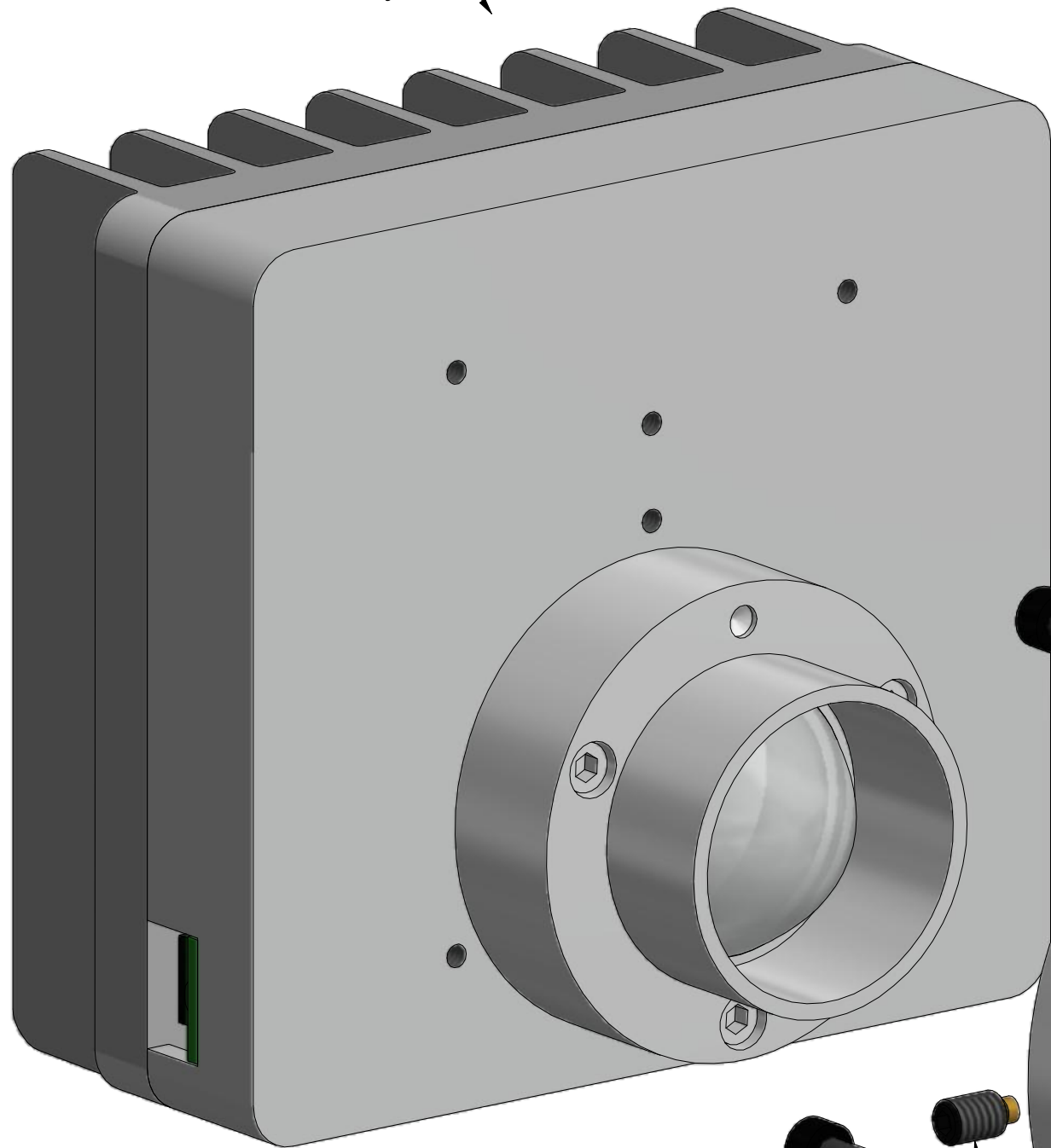


Nanodyne Replacement Illuminator for Nikon L150 - Included Items

PN 11145 T2PIHP3 Illuminator Assy
w Offset Lens - Side Adjust



PN 10695 SHCS
M3 x 0.5 x 12 mm
(3 pcs)

PN 10718 Adapter
Nikon Optiphot-2

PN 10467 Set Screw
8-32 Brass Tip

If Needed see the Nikon Optiphot-2 installation instructions for removing the original illuminator and attaching the Nanodyne one.

Additional Items Included But Not Shown:

PN 10490 Hex Key 5/64 inch (for securing illuminator to adapter)

PN 10566 Hex Key 2.5mm long arm ball end (for M3 SHCS to attach adapter to microscope)

The illuminator may be powered by plugging the cable into the power supply provided, or into a suitable USB port on a computer or other device.



PN 11163 Power Supply 5V 2.1A and
PN 10734 Power Cable 1.35mm
ID/3.5mm OD x USB A 6 ft.

Power supplies are subject to substitution without notice due to availability issues and changes in regulations.



PN 10736 Rubber plug to block unused AC power receptacle.



3M VHB tape to secure pot cable

Han-Seung Yang 3/15/2022	
PN 12184 Nikon L150	
Illuminator System - Side adjust	REV 2
SHEET 1 OF 1	