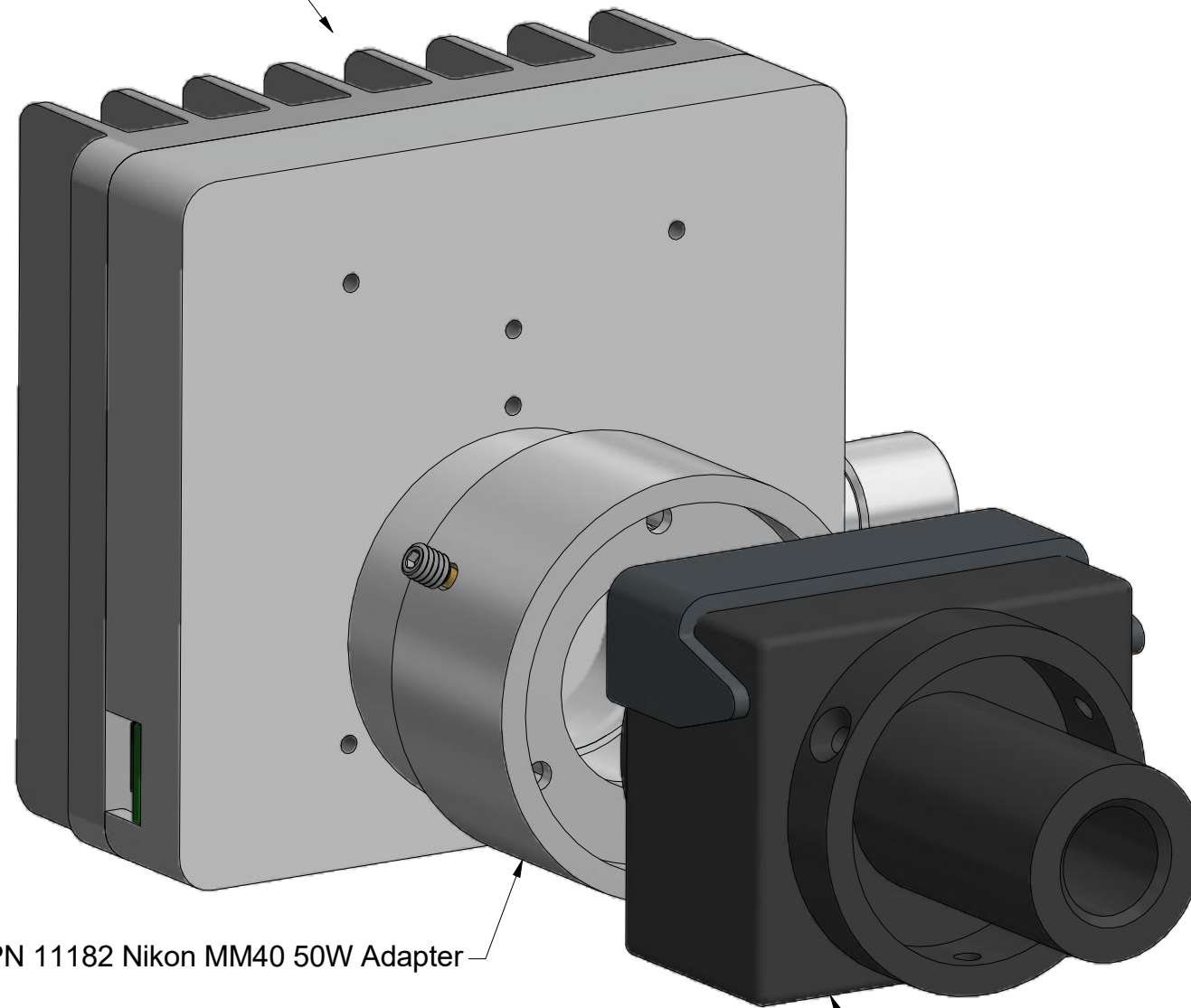


Nanodyne Replacement Illuminator for Nikon MM40 50W High Power Illuminator - Included Items

PN 11747 Nikon MM40 50W High Power illuminator Assy



PN 11182 Nikon MM40 50W Adapter

MM40 50W lamphouse (OEM Part)

***Note that the illuminator mounted adjustment potentiometer is standard on this unit. Ask about a remote adjustment pot if desired.**

Additional Items Included But Not Shown:

- PN 10709 Hex Key 3/32 Short Arm (for 4-40 mounting screws)
- PN 10337 Hex Key 2mm Short Arm (for set screw)

Not Included - Save From Original:

MM40 50W OEM part from original lamphouse



PN 11163 Power Supply 5V 2.1A and PN 10734 Power Cable 1.35mm ID/3.5mm OD x USB A 6 ft.



PN 10736 Rubber plug to block unused AC power receptacle.



Tape to secure wires.

The illuminator may be powered by plugging the cable into the power supply provided, or into a suitable USB port on a computer or other device.

Power supplies subject to substitution without notice due to availability issues and changes in regulations.

Han-Seung Yang	10/8/2020	
PN 11748 Nikon MM40 50W High Power illuminator System	REV 2	
SHEET 1 OF 1		