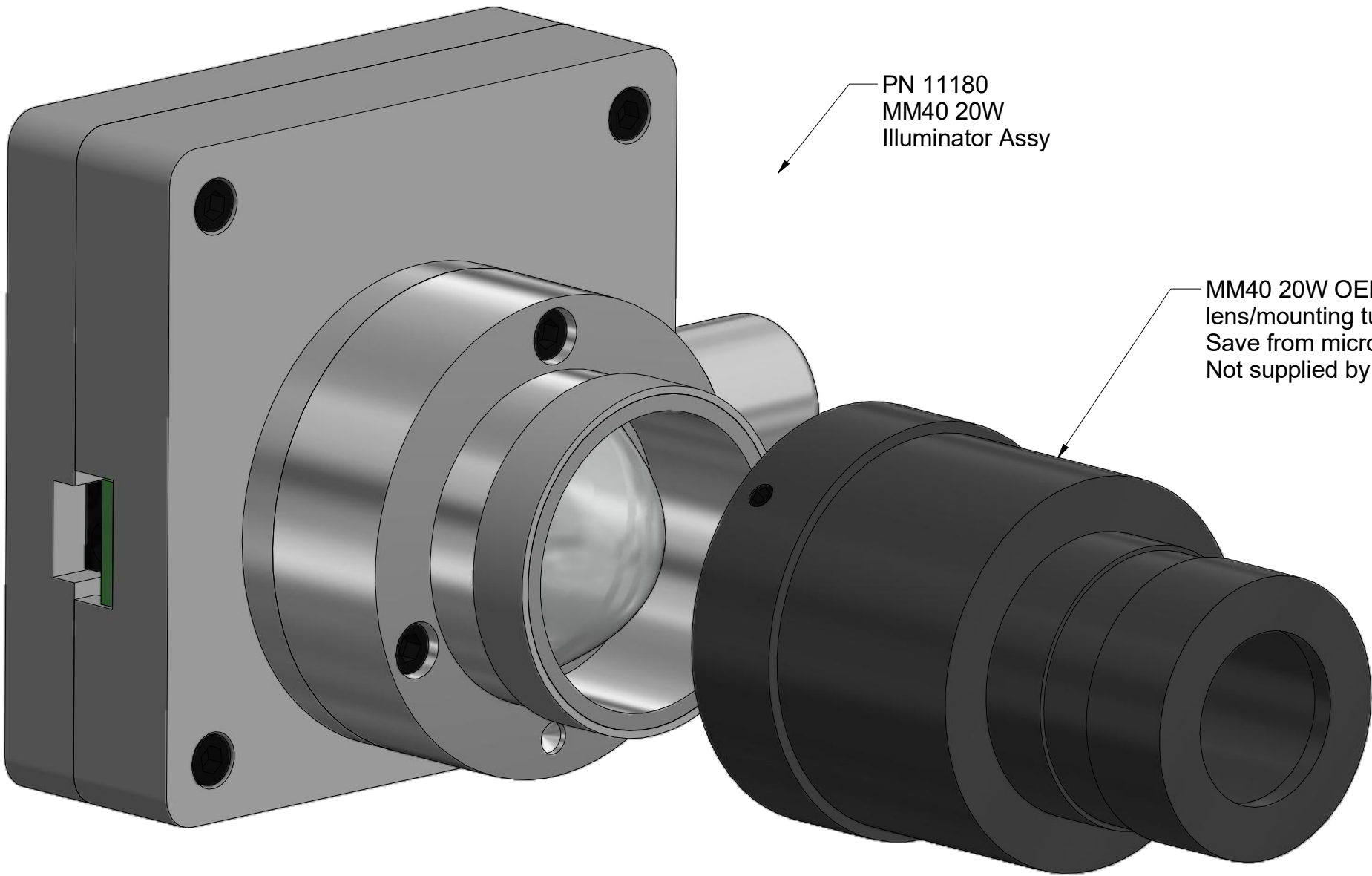


Nanodyne Replacement Illuminator for Nikon MM40 20W Microscope Installation Instructions - Included Items

*Note that the illuminator mounted adjustment potentiometer is standard on this unit. Ask about a remote adjustment pot if desired.

Additional Items Included But Not Shown:

PN 10456 Hex Key 1.5mm (for set screws in OEM collector lens tube)



PN 10733 Power Supply - XP Power 5V 1A and PN 10734 Cable 6 foot USB A to 1.35mm ID/3.5mm OD RA Barrel Plug.

The illuminator may be powered by plugging the cable into the power supply provided, or into a suitable USB port on a computer or other device.



PN 10736 Rubber plug to block unused AC power receptacle.

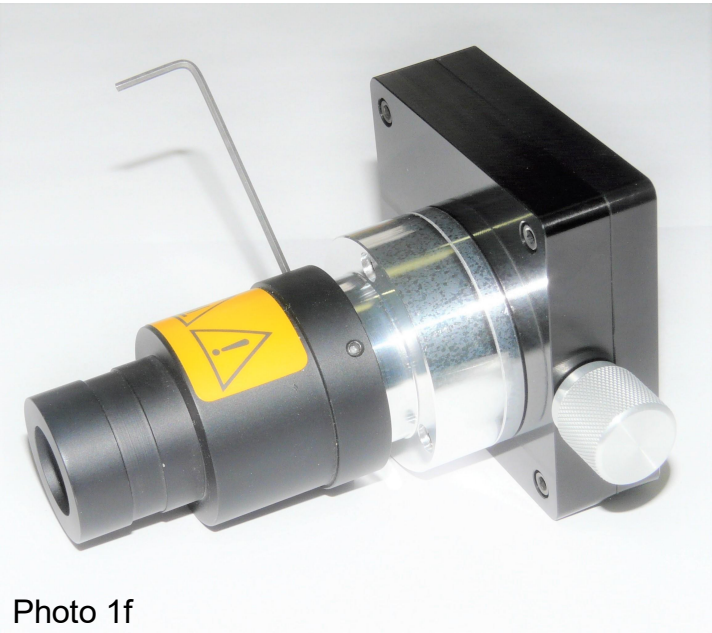
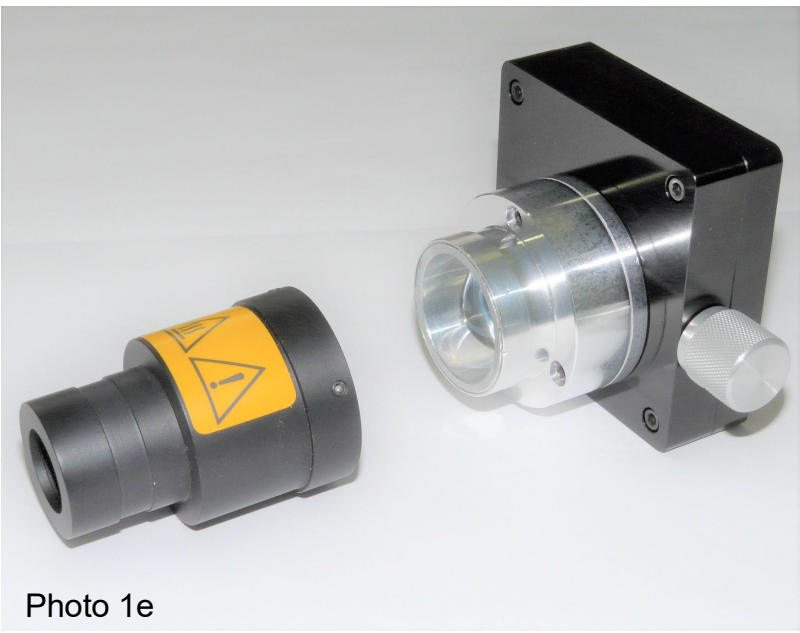
Power supplies subject to substitution without notice due to availability issues and changes in regulations.

Wayne Bonin		3/30/2020	
PN 11181 Nikon MM40 20W illuminator System Installation			REV 2
SHEET 1		OF	3

Nanodyne Replacement Illuminator for Nikon MM40 20W Microscope Installation Instructions - Step 1. Remove old lamp housing and attach lens tube to the new illuminator.



Remove the original illuminator lamp housing and lens tube from the microscope. Remove the lens tube from the lamp housing (use the 1.5mm hex key provided)



Remove the 6 items shown above from the OEM lens tube, starting with the metal wire snap ring. Attach the gutted tube to the Nanodyne illuminator.

Nanodyne Replacement Illuminator for Nikon MM40 20W Microscope Installation Instructions - Step 2. Place Nanodyne illuminator and connect new power supply.

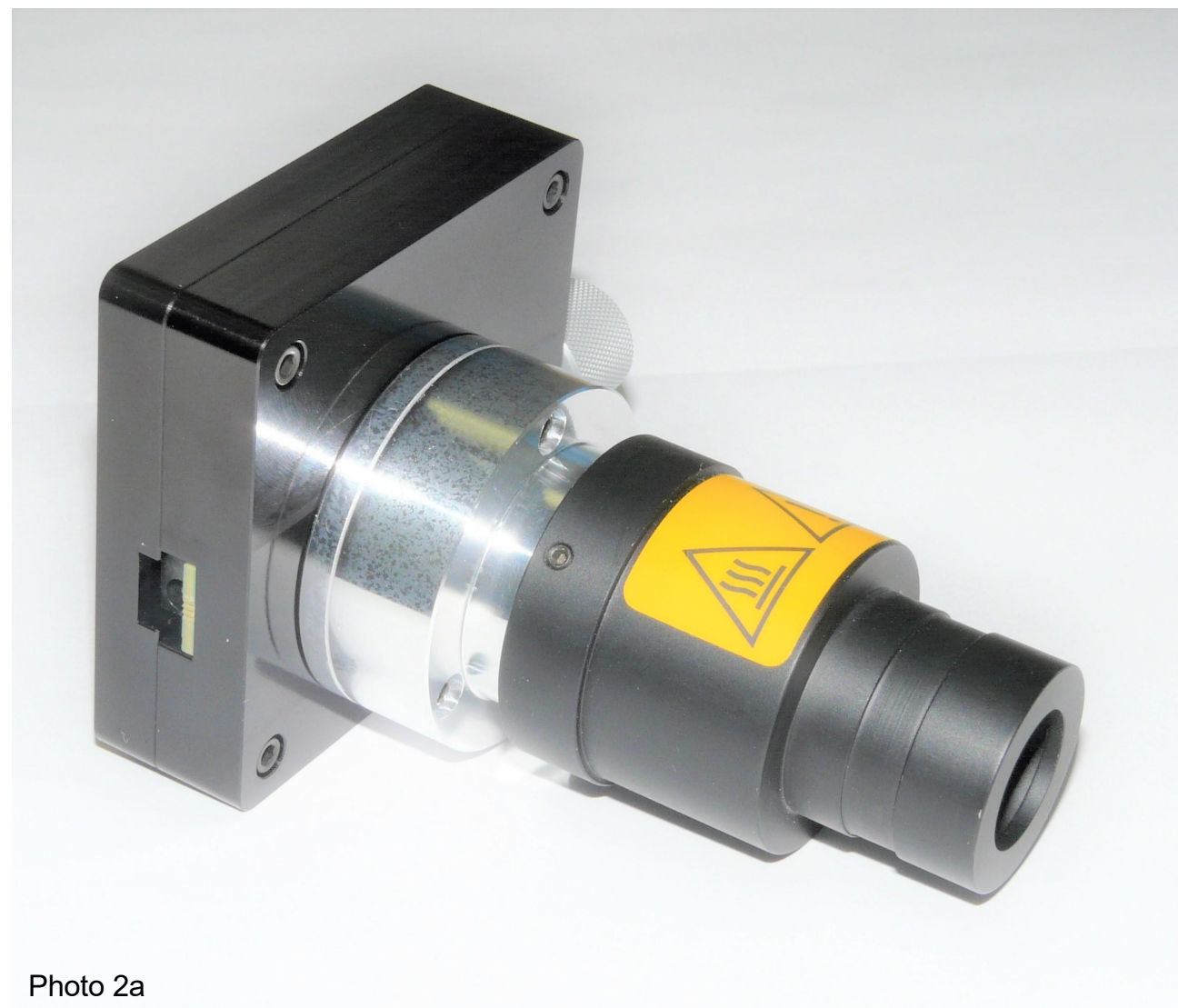


Photo 2a



Photo 2b

Replace the OEM lens tube (nor with the Nanodyne illuminator attached) in the microscope as it would normally be secured. Connect the new power supply to the connector on the side of the illuminator. (See left photo above). It is now ready to operate using the intensity control on the illuminator.

The unit is fully off when the control knob is turned CCW. It may or may not have a noticable click when turned off. Do not force it.

The heat warning symbols on the OEM lens tube are no longer relevent and can be removed, ignored, or covered up as desired.

Wayne Bonin		3/30/2020	
PN 11181 Nikon MM40 20W illuminator System Installation			REV 2
SHEET 3		OF	3