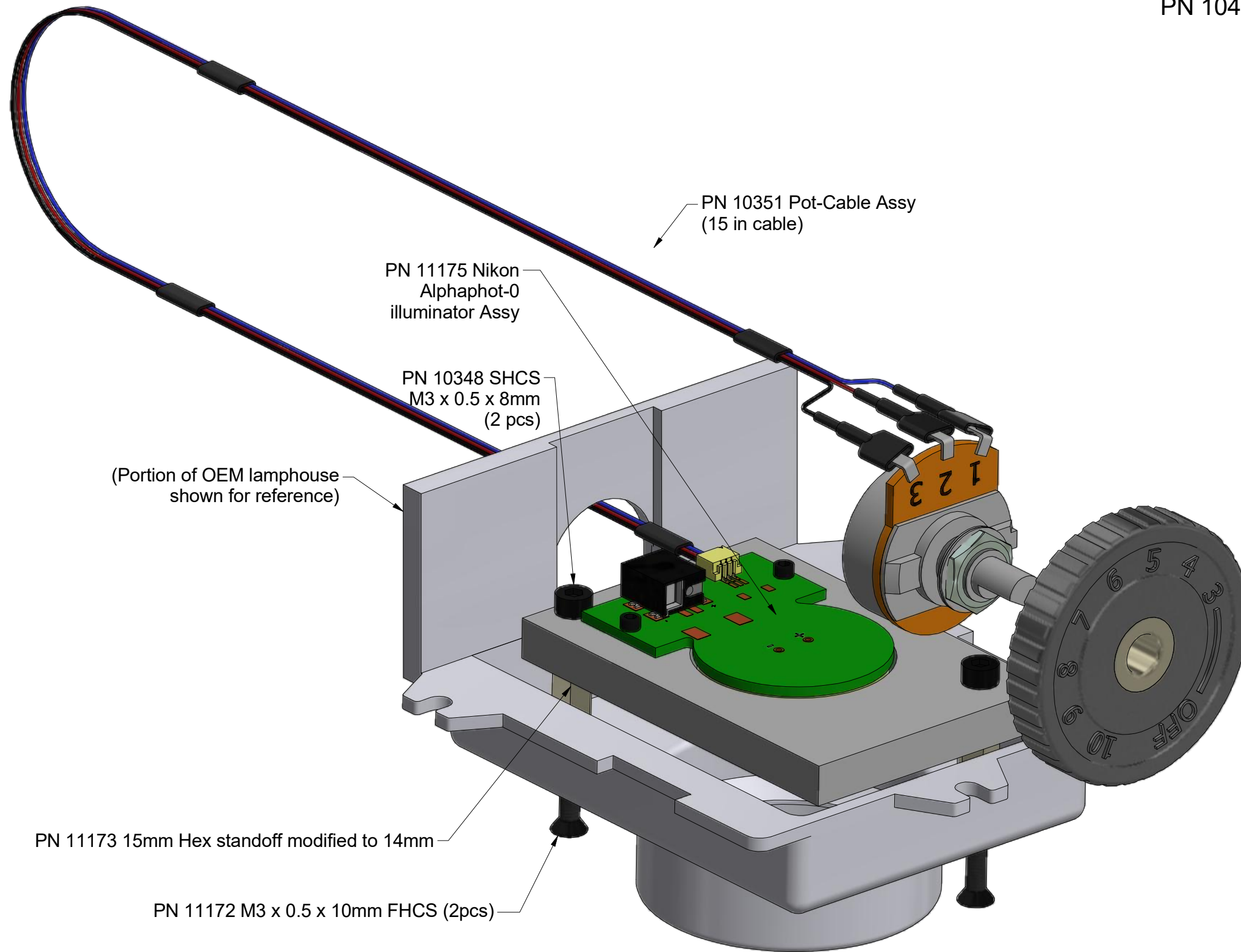


Nanodyne Replacement Illuminator for Nikon Alphaphot-0 Microscope Installation Instructions - Included Items

Parts included but not shown:

PN 10457 Hex Key 2.5mm short arm (for M3 screws)



PN 10733 Power Supply - XP Power 5V 1A and PN 10734 Cable Assy 1.35mm ID x 3.5mm OD RA plug to USB A, 6 foot.

The illuminator may be powered by plugging the cable into the power supply provided, or into a suitable USB port on a computer or other device.

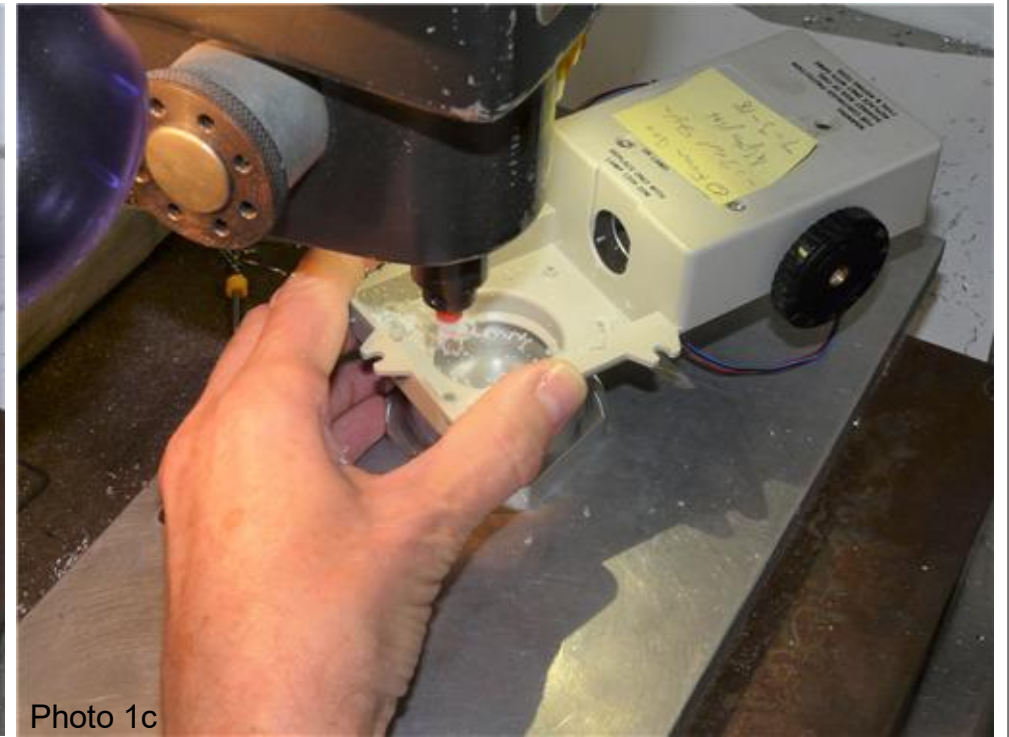
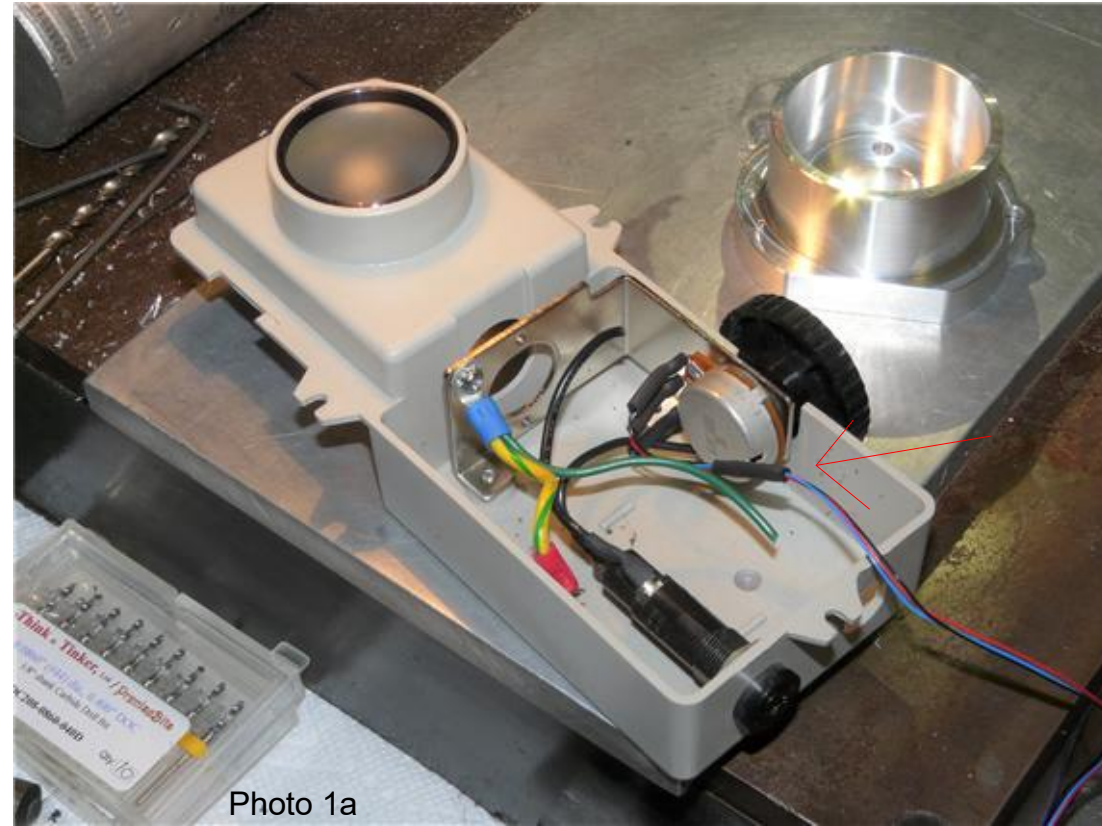
Power supplies are subject to substitution without notice due to availability issues and changes in regulations.



3M VHB tape to secure wires

Han-Seung Yang	3/23/2019
PN 11176 Nikon Alphaphot-0 Installation Instructions	REV 2
SHEET 1 OF 5	

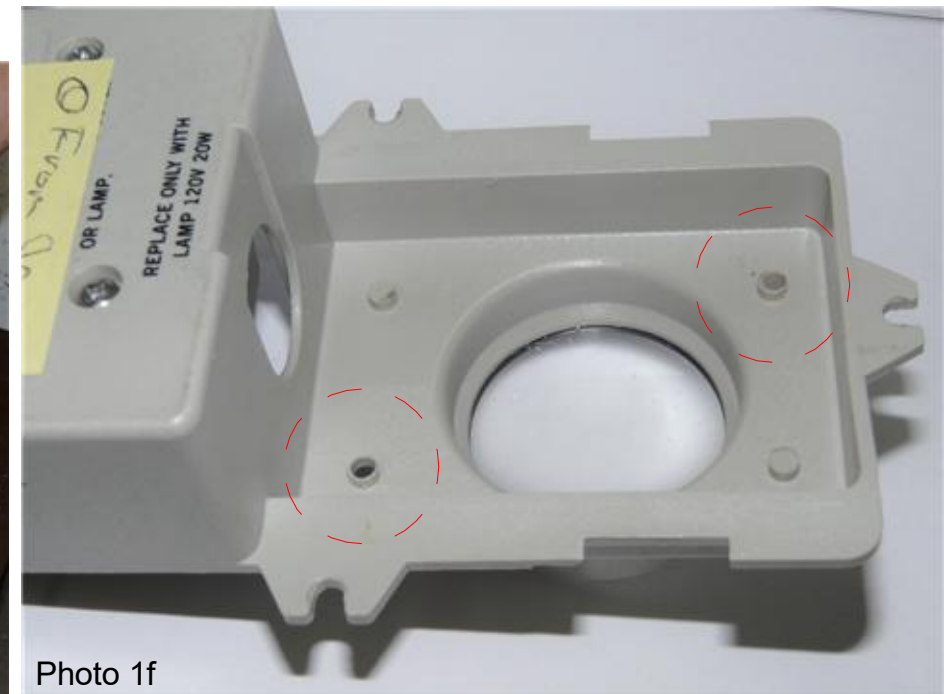
Nanodyne Replacement Illuminator for Nikon Alphaphot-0 Microscope Installation Instructions - Step 1. Remove old lamp housing and install new potentiometer.



Before drilling.

Modify original lens holder and lamphouse unit from microscope by drilling two 0.125 inch diameter holes shown in photo below (red circles).

Remove the lighting unit by unscrewing the screws that hold it in place, then remove old illuminator parts (not shown in photos). Install a new pot cable assembly provided (red arrow).



After drilling.

Han-Seung Yang	3/23/2019
PN 11176 Nikon Alphaphot-0 Installation Instructions	REV 2
SHEET 2 OF 5	

Nanodyne Replacement Illuminator for Nikon Alphaphot-0 Microscope Installation Instructions - Step 2. Make countersinks and install hex standoffs.

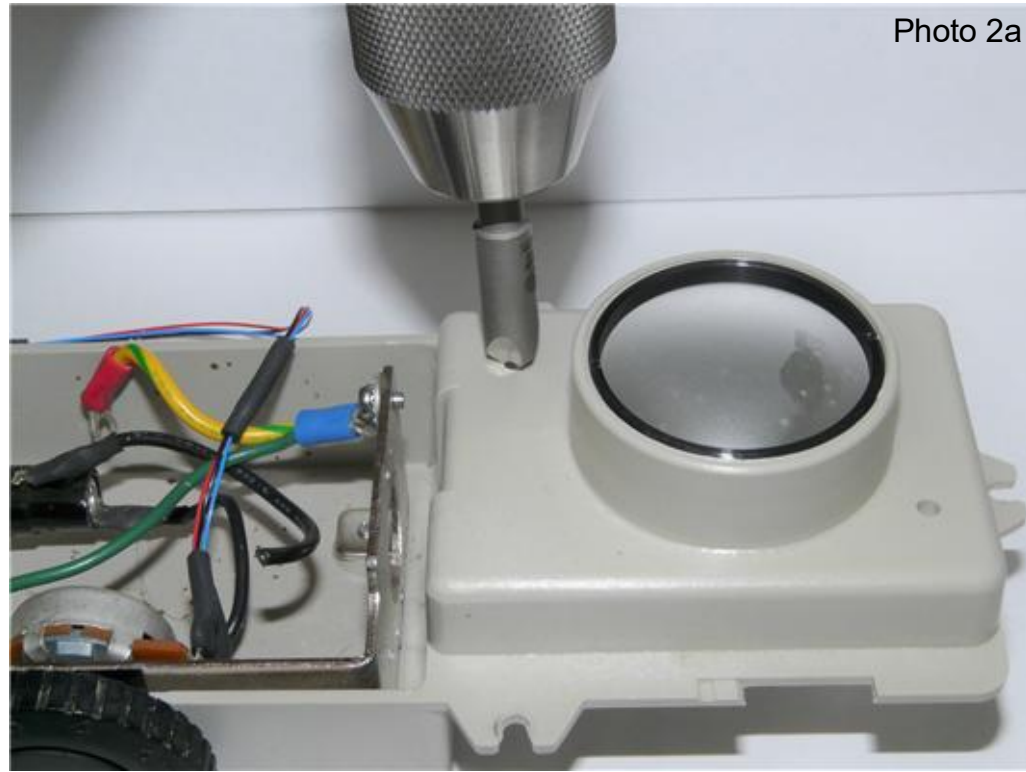


Photo 2a

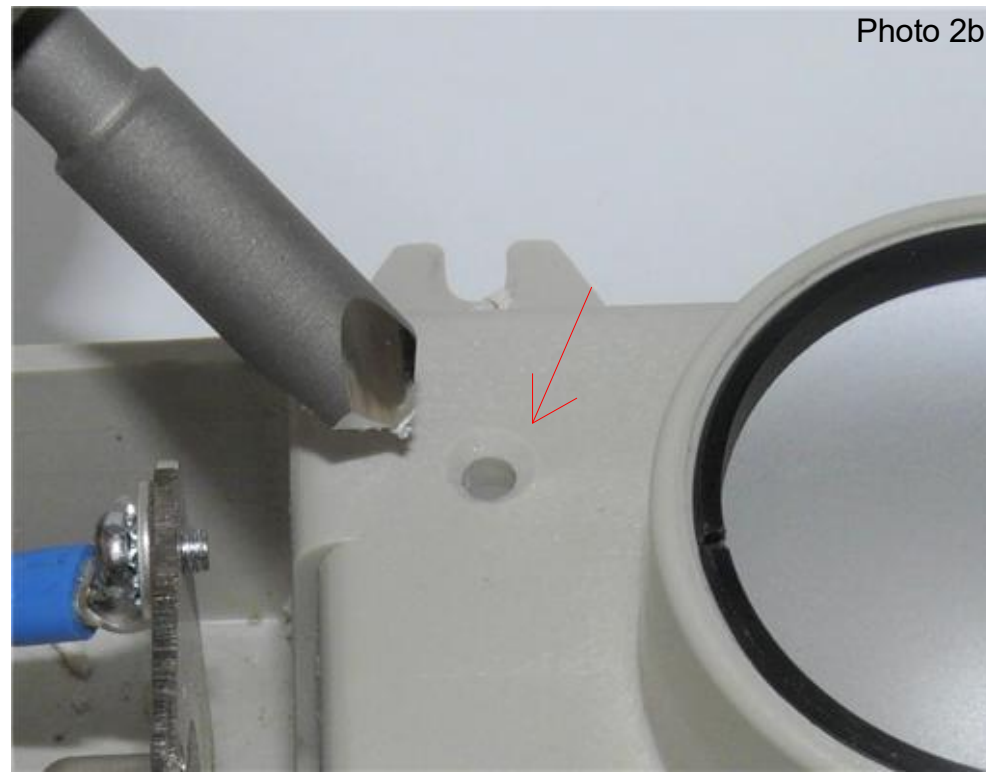


Photo 2b

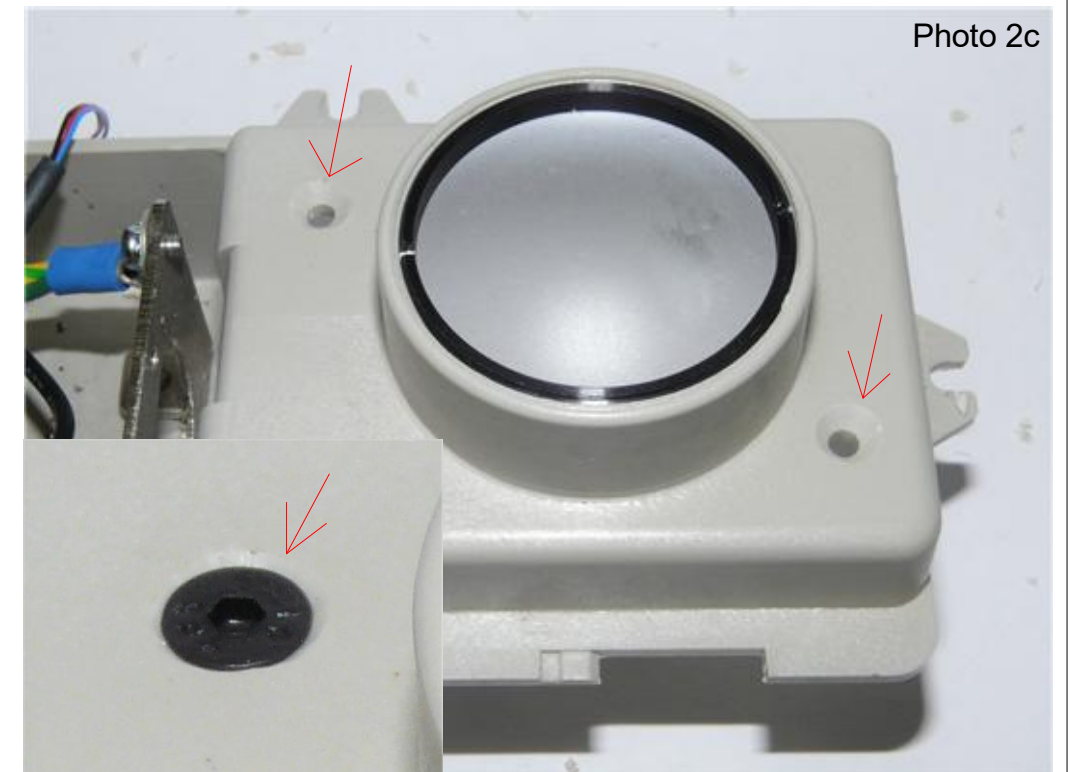


Photo 2c

Make two countersink (red arrows) by hand on the other side of drill hole by using countersink drill bit provided. It must be big enough to bury flat head cap screw as shown in the small photo above.



Photo 2d



Photo 2e



Photo 2f

Match recess end of the hex standoffs with the drill holes, then tighten the flat head cap screw provided on the other side of the lens holder.

Han-Seung Yang	3/23/2019
PN 11176 Nikon Alphaphot-0 Installation Instructions	REV 2
SHEET 3 OF 5	

Nanodyne Replacement Illuminator for Nikon Alphaphot-0 Microscope Installation Instructions - Step 3. Route pot cable and new power cord.



Photo 3a

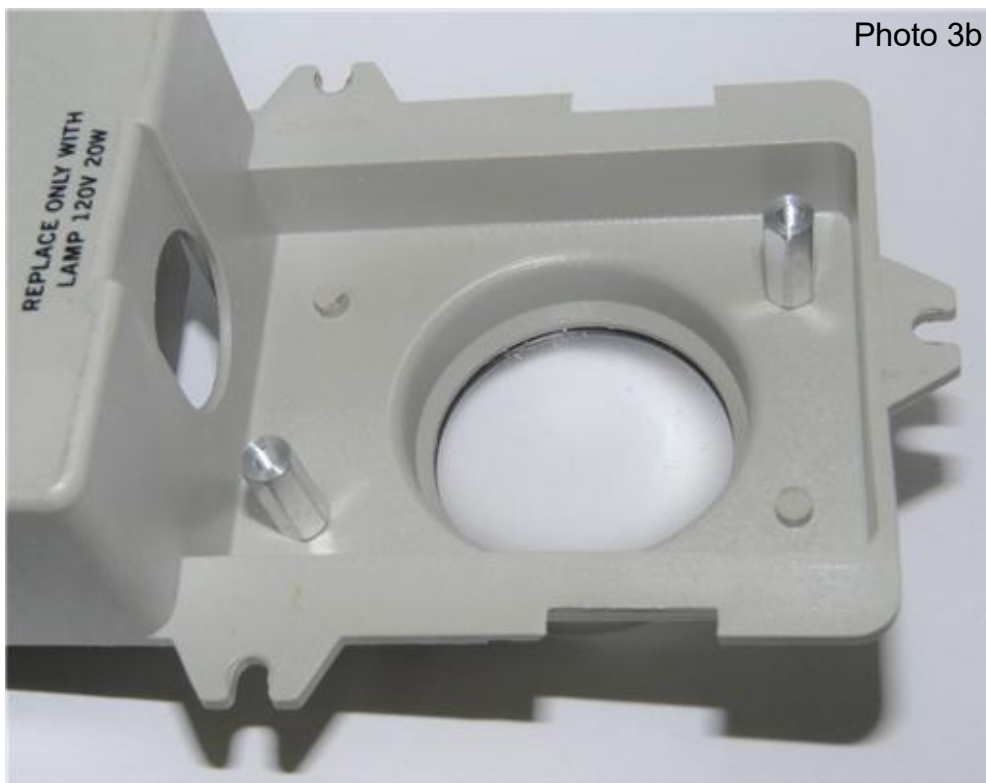


Photo 3b

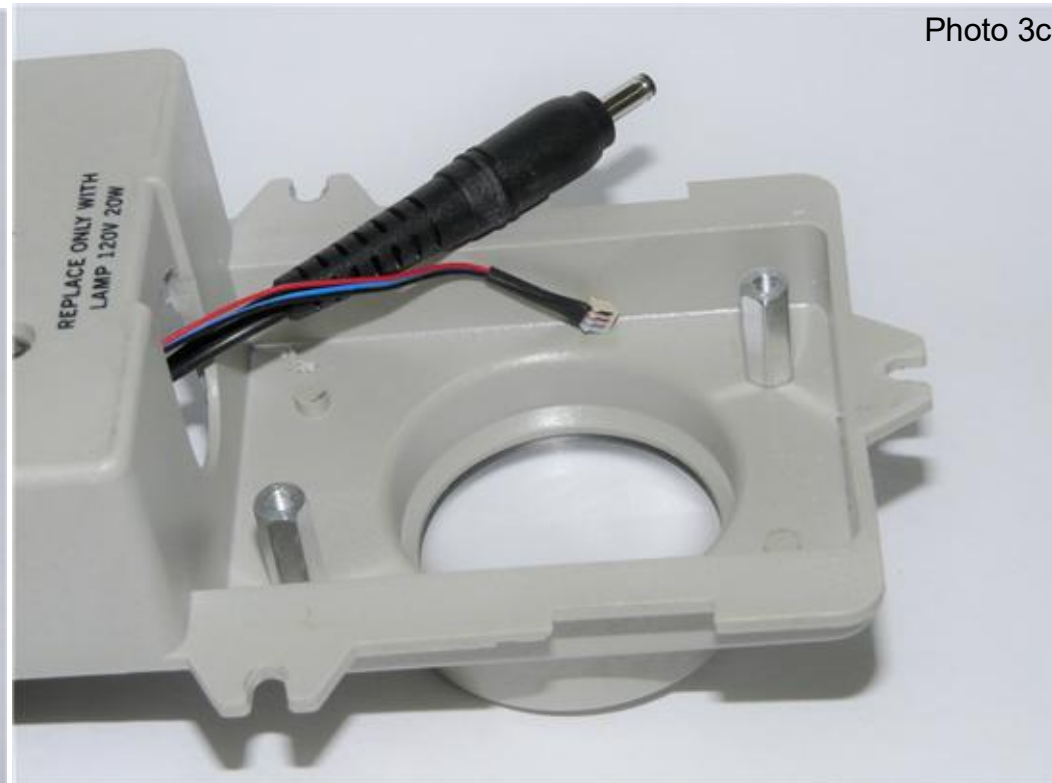


Photo 3c

Tighten another flat head cap screw and Route the pot cable and new power cord through the light socket hole as shown.

Han-Seung Yang		3/23/2019
PN 11176 Nikon Alphaphot-0 Installation Instructions		REV 2
SHEET 4		OF 5

Nanodyne Replacement Illuminator for Nikon Alphaphot-0 Microscope Installation Instructions - Step 4. Connect power supply and pot cable. Install Nanodyne illuminator.

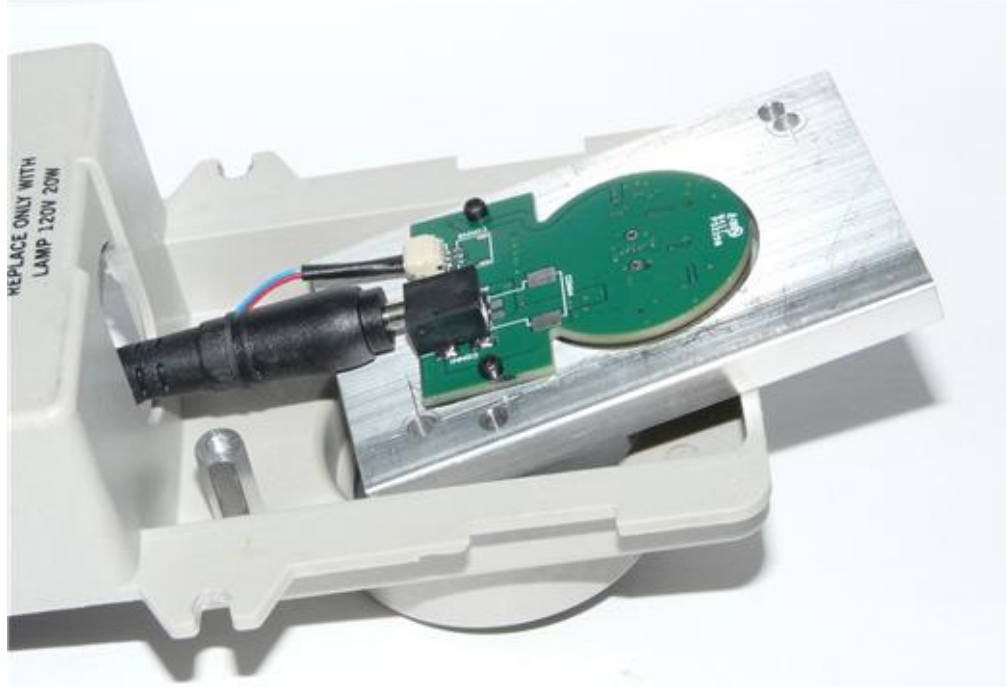


Photo 4a

Plug the power supply into the illuminator assembly and connect the cable from the potentiometer to the socket on the circuit board. The connector will only seat one way, so do not force it in if it does not fit. The connectors are keyed so they will only go together the correct way (as long as excessive force is not used). Be sure they are fully inserted so they do not come loose later. See detail at right.

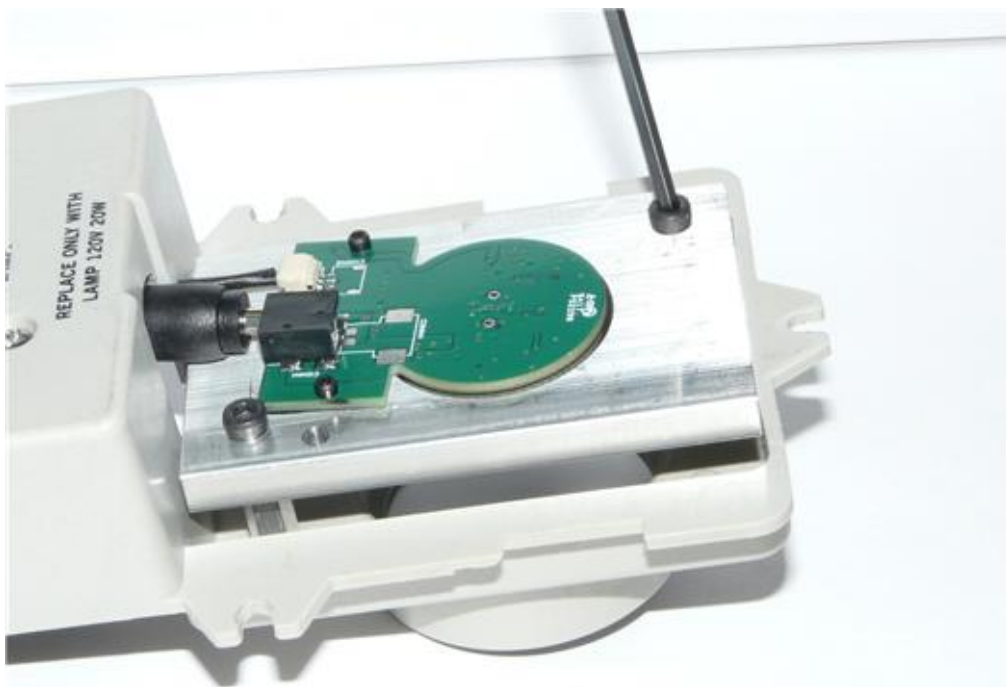


Photo 4b

Mount Nanodyne illuminator assembly on the hex standoffs. Tighten two socket head cap screws to hold Nanodyne illuminator assembly in place. Now the installation is complete and Nanodyne illuminator is ready to operate.

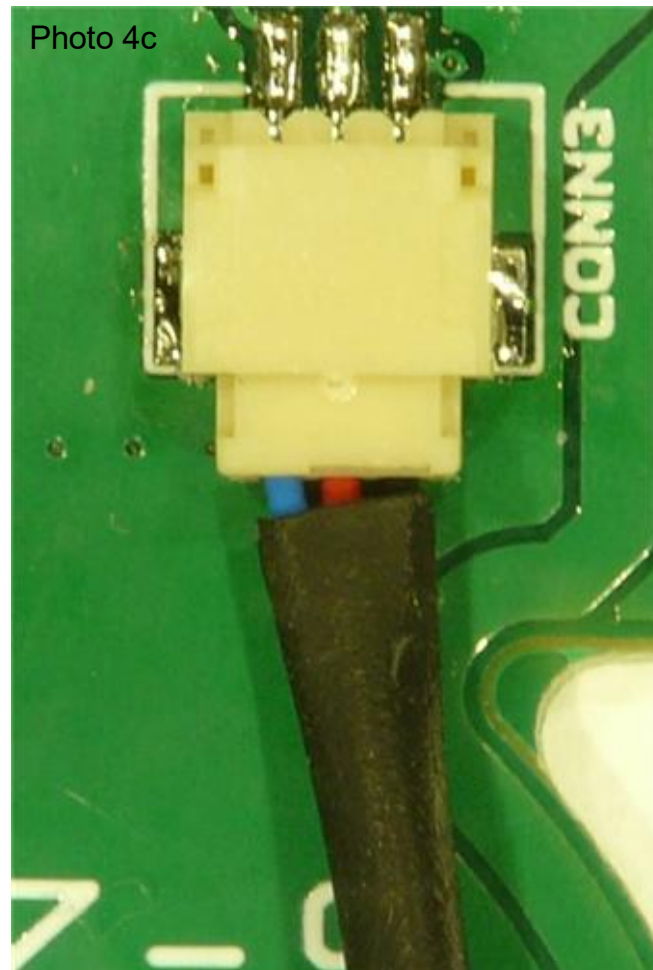


Photo 4c

The plug for the intensity adjustment goes into the socket on the printed circuit board this far with no force when oriented correctly. The connector is not yet engaged.

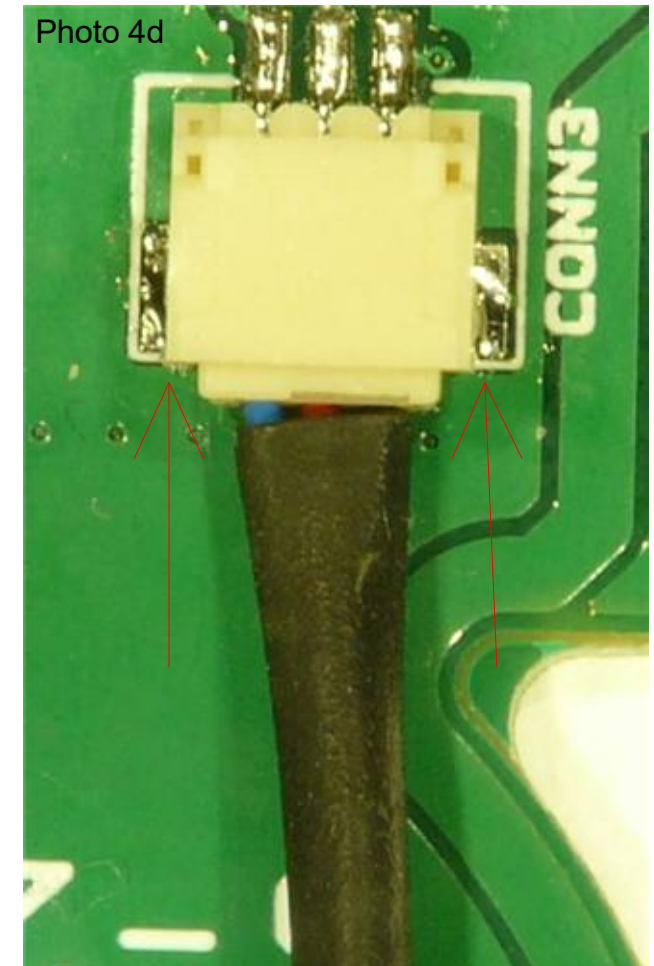


Photo 4d

Push the plug into the socket using your fingernail. There will be a small snap as the connector engages. The required force should be quite small.

Han-Seung Yang	3/23/2019
PN 11176 Nikon Alphaphot-0 Installation Instructions	REV 2
SHEET 5 OF 5	