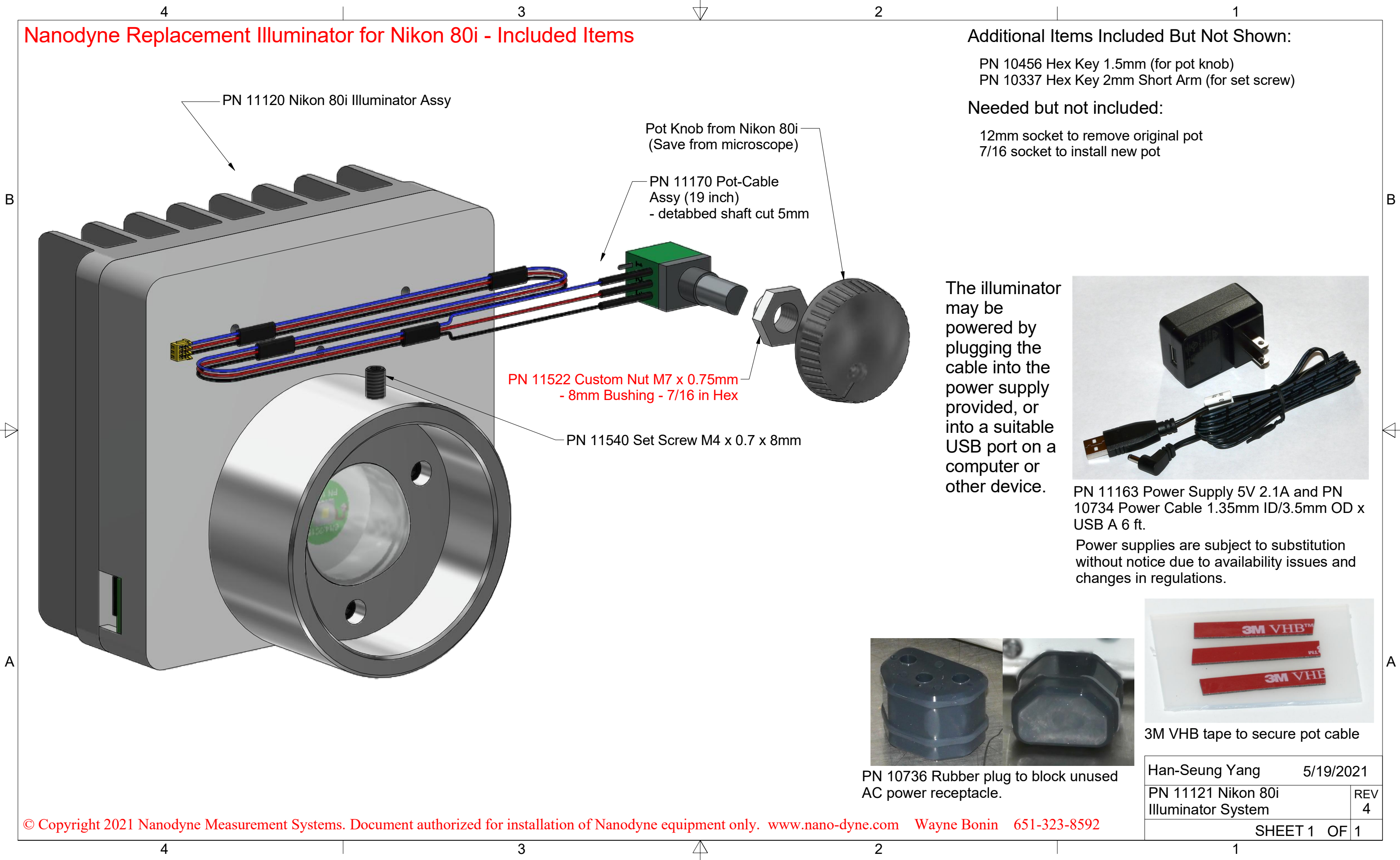


Nanodyne Replacement Illuminator for Nikon 80i - Included Items



PN 11120 Nikon 80i Illuminator Assy

Pot Knob from Nikon 80i
(Save from microscope)

PN 11170 Pot-Cable
Assy (19 inch)
- detabbed shaft cut 5mm

PN 11522 Custom Nut M7 x 0.75mm
- 8mm Bushing - 7/16 in Hex

PN 11540 Set Screw M4 x 0.7 x 8mm

Additional Items Included But Not Shown:

- PN 10456 Hex Key 1.5mm (for pot knob)
- PN 10337 Hex Key 2mm Short Arm (for set screw)

Needed but not included:

- 12mm socket to remove original pot
- 7/16 socket to install new pot

The illuminator may be powered by plugging the cable into the power supply provided, or into a suitable USB port on a computer or other device.



PN 11163 Power Supply 5V 2.1A and PN 10734 Power Cable 1.35mm ID/3.5mm OD x USB A 6 ft.

Power supplies are subject to substitution without notice due to availability issues and changes in regulations.



PN 10736 Rubber plug to block unused AC power receptacle.



3M VHB tape to secure pot cable

Han-Seung Yang		5/19/2021
PN 11121 Nikon 80i Illuminator System		REV 4
SHEET 1		OF 1