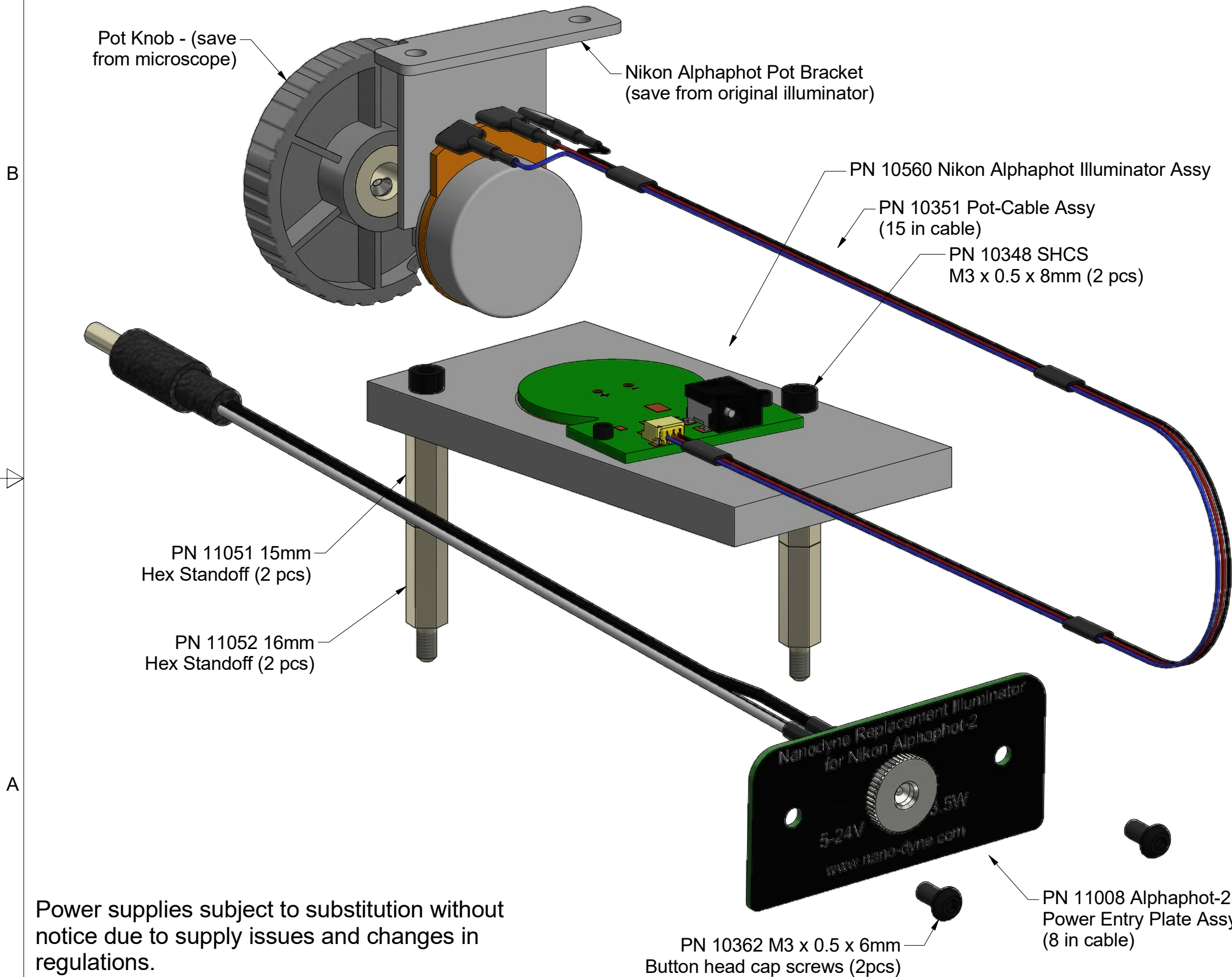


Nanodyne Replacement Illuminator for Nikon Alphaphot-2 Microscope Installation Instructions: Included Items



Power supplies subject to substitution without notice due to supply issues and changes in regulations.

Parts included but not shown:

- 8mm washer for PN 10213 pot
- 8mm nut for PN 10213 pot
- PN 10457 Hex Key 2.5mm short arm (for M3 socket head screws)
- PN 10337 Hex Key 2mm short arm (for M3 button head screws)



PN 10733 Power Supply - XP Power 5V 1A Fixed Blade US Input/USB Output and PN 10734 Cable Assy 1.35mm ID x 3.5mm OD RA plug to USB A, 6 foot.

The illuminator may be powered by plugging the cable into the power supply provided, or into a suitable USB port on a computer or other device.

Han-Seung Yang		11/20/2020	
PN 11053 Nikon Alphaphot-2 Installation Instructions		REV 5	
SHEET 1		OF	9

Nanodyne Replacement Illuminator for Nikon Alphaphot-2 Microscope Installation Instructions - Step 1. Remove condenser lens and old lamp housing.



Photo 1a

Begin by removing the condenser lens with a twist as shown above and below.



Photo 1b

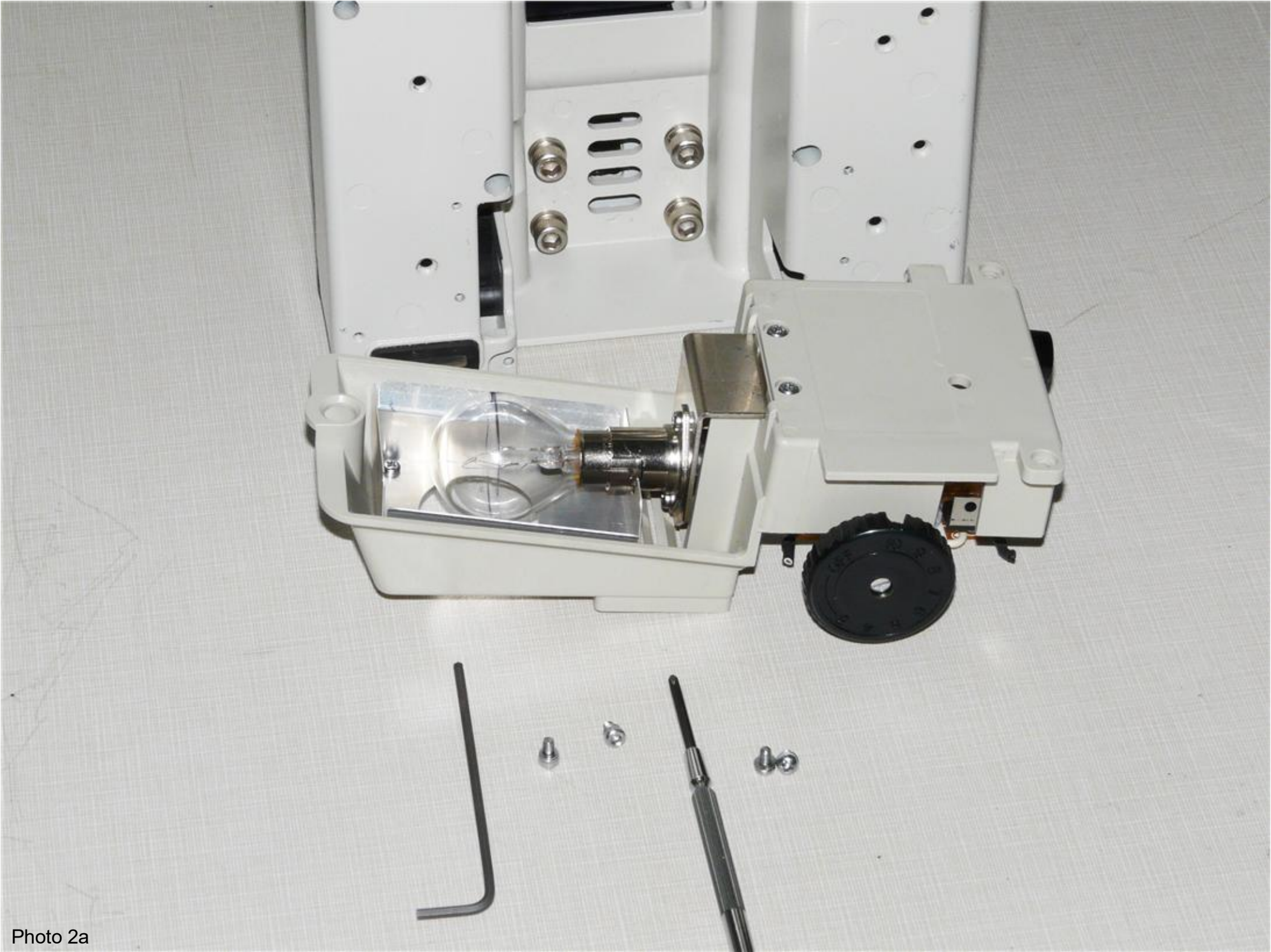


Photo 1c

On the underside of the microscope, locate the housing for the light bulb and remove it.

(Note that the above photo shows the older tungsten bulb version - the halogen version will be slightly different)

Nanodyne Replacement Illuminator for Nikon Alphaphot-2 Microscope Installation Instructions - Step 2. Remove old lamp.



Remove the lighting unit by unscrewing the four screws that hold it in place.
(Photo shows older tungsten bulb version - halogen version will be slightly different)

Han-Seung Yang		11/20/2020
PN 11053 Nikon Alphaphot-2 Installation Instructions		REV 5
SHEET 3		OF 9

Nanodyne Replacement Illuminator for Nikon Alphaphot-2 Microscope Installation Instructions - Step 3. Remove old parts (bulb, bracket, pot, socket and AC power recepticle).

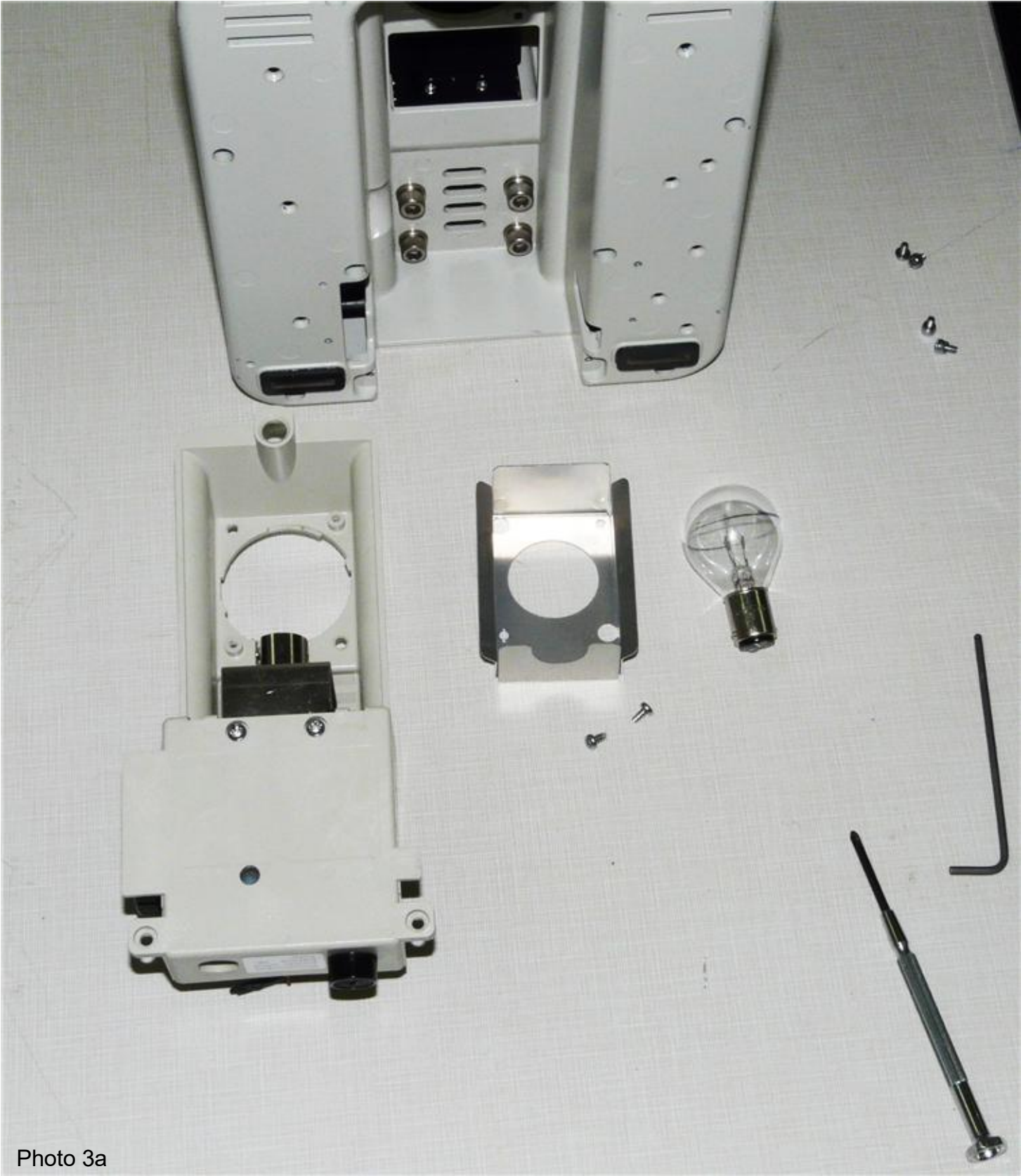


Photo 3a

Remove the old illuminator parts as shown.

(Photos 3a, 3b and 3c show the older tungsten bulb version. Photos 3d and 3e show the Alphaphot-2 (halogen illuminator) version.

© Copyright 2020 Nanodyne Measurement Systems. Document authorized for installation of Nanodyne equipment only. www.nano-dyne.com Wayne Bonin 651-323-8592

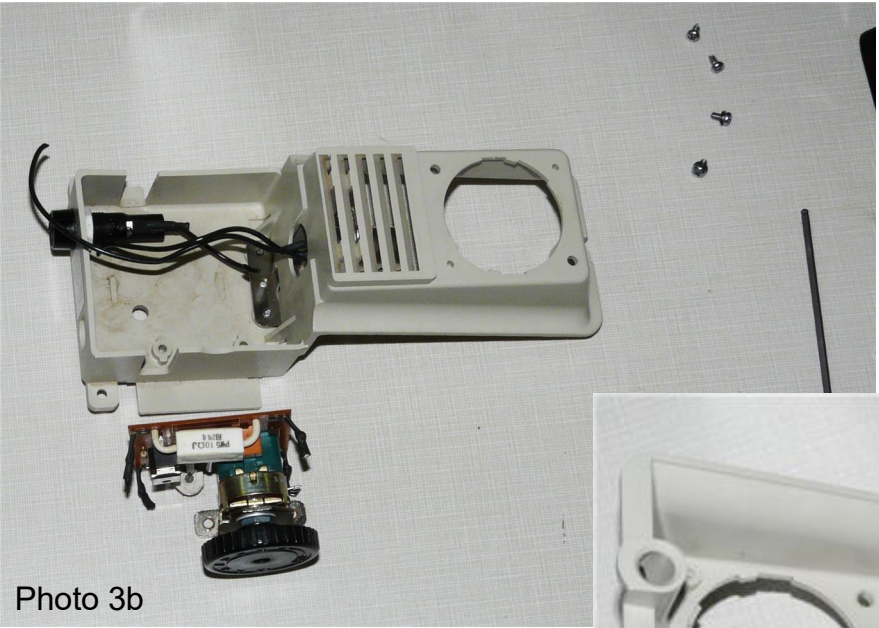


Photo 3b

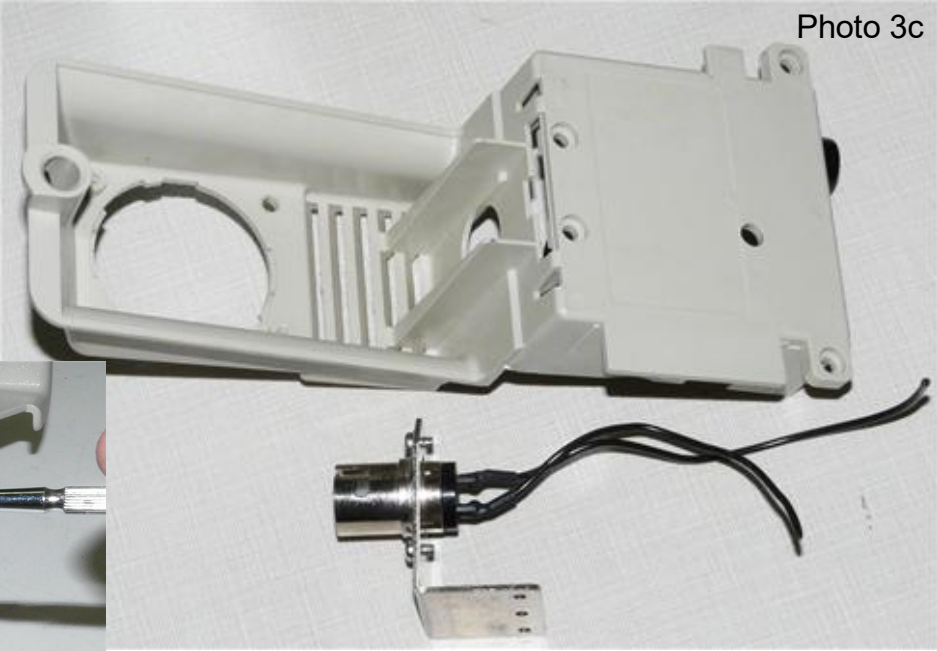


Photo 3c

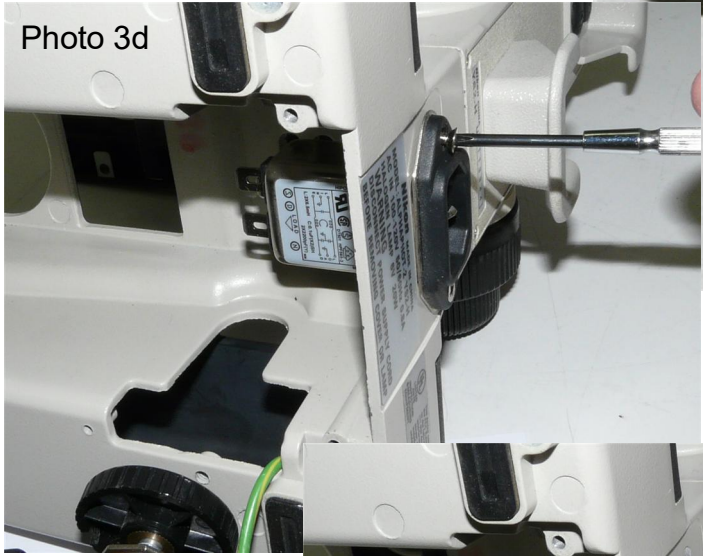


Photo 3d

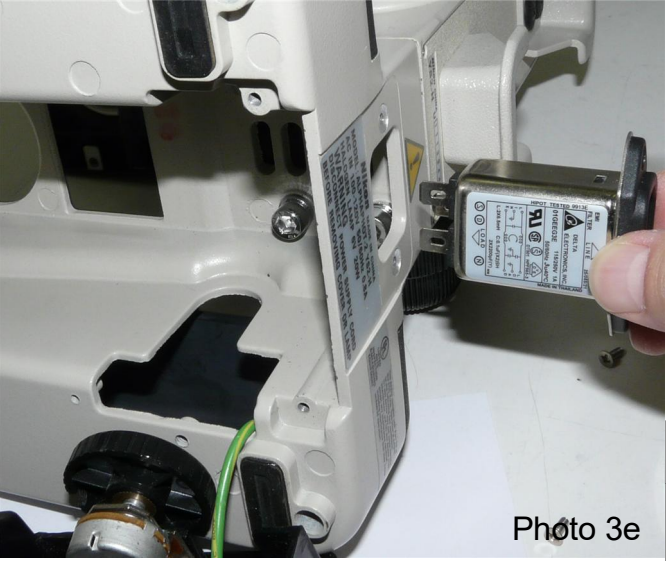
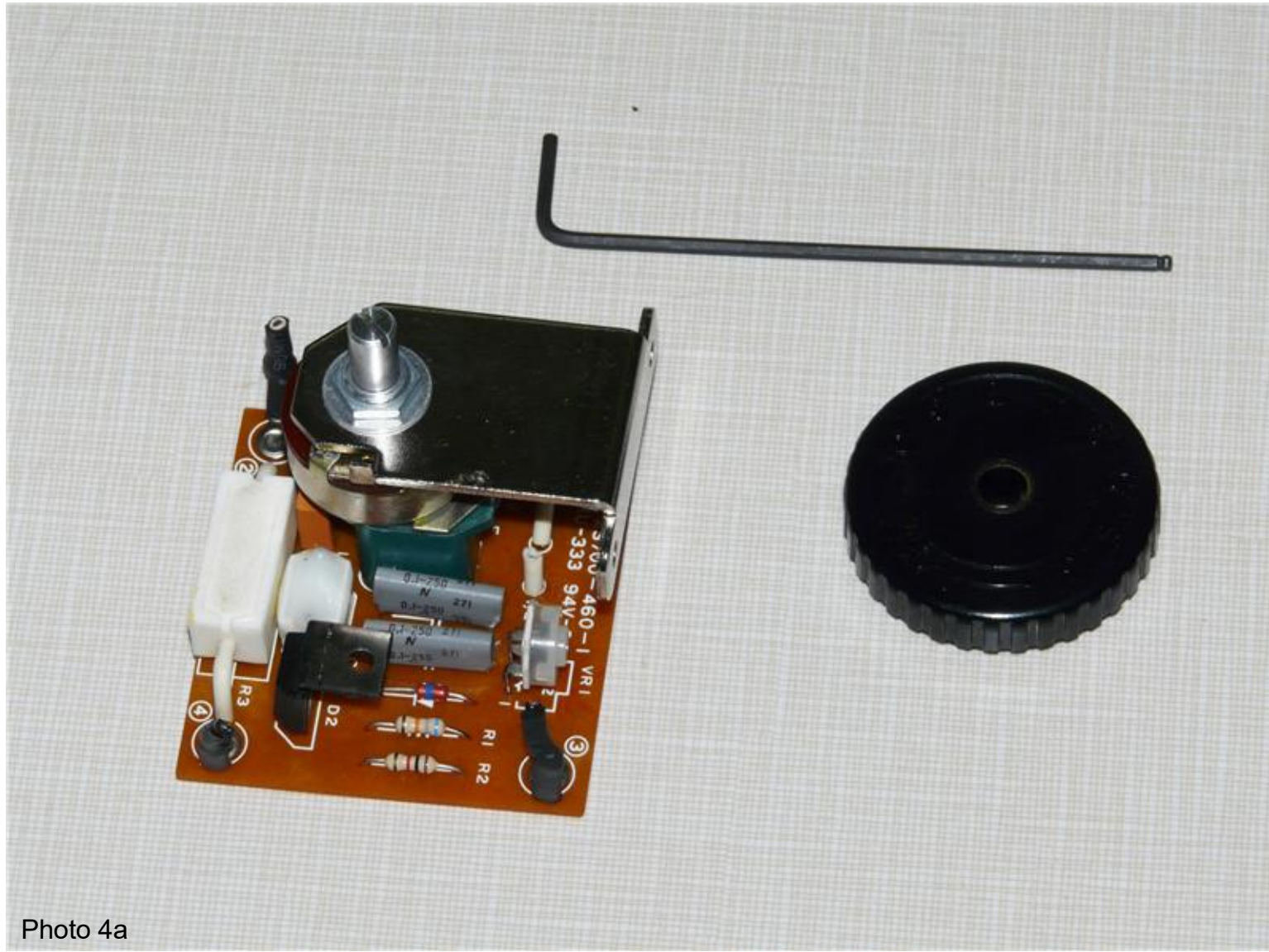


Photo 3e

Han-Seung Yang		11/20/2020	
PN 11053 Nikon Alphaphot-2		REV	
Installation Instructions		5	
SHEET 4		OF	9

Nanodyne Replacement Illuminator for Nikon Alphaphot-2 Microscope Installation Instructions - Step 4. Remove pot knob and bracket.



Remove the potentiometer knob using the hex key, and the bracket from the potentiometer using a 10mm socket. Keep the knob and bracket for later.

(These photos are from the older tungsten bulb version. The electronics for the Alphaphot-2 (halogen illuminator) version will look different, but the bracket is the same)

Nanodyne Replacement Illuminator for Nikon Alphaphot-2 Microscope Installation Instructions - Step 5. Install new pot and power entry plate.



Photo 5a

Connect ground cable (light green), place the new potentiometer onto the existing bracket and screw in place. Then, install the existing knob onto the new potentiometer. Route the cable through the light socket hole, as shown.

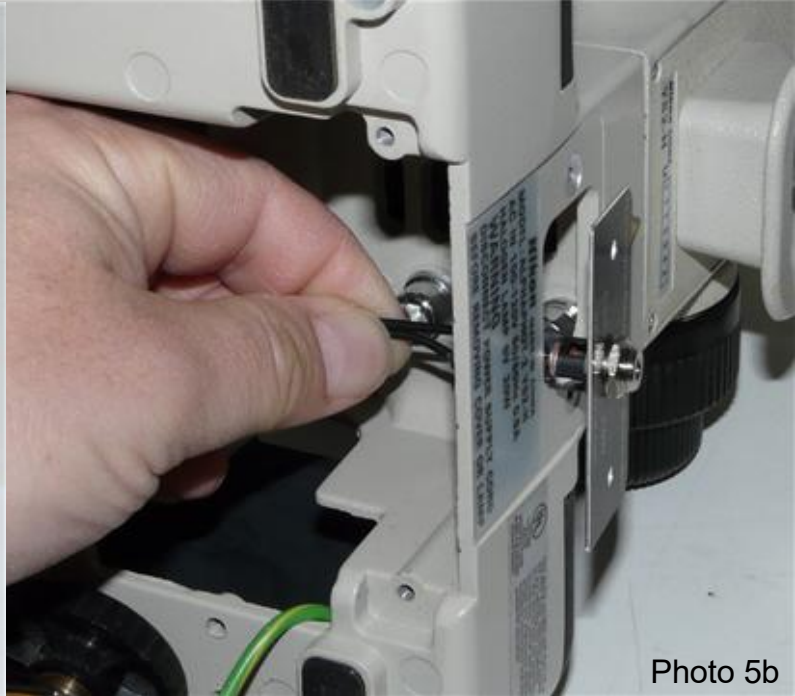


Photo 5b



Photo 5c



Photo 5d

Install Power Entry Plate through the existing power cord hole and route the new power cord through the light socket hole as shown.

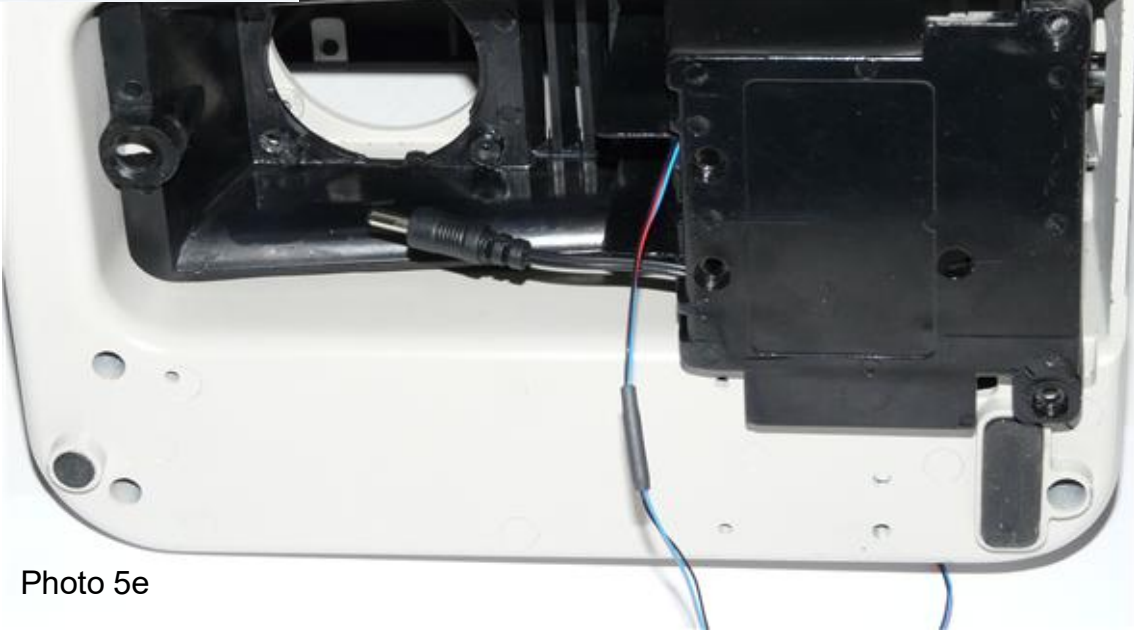
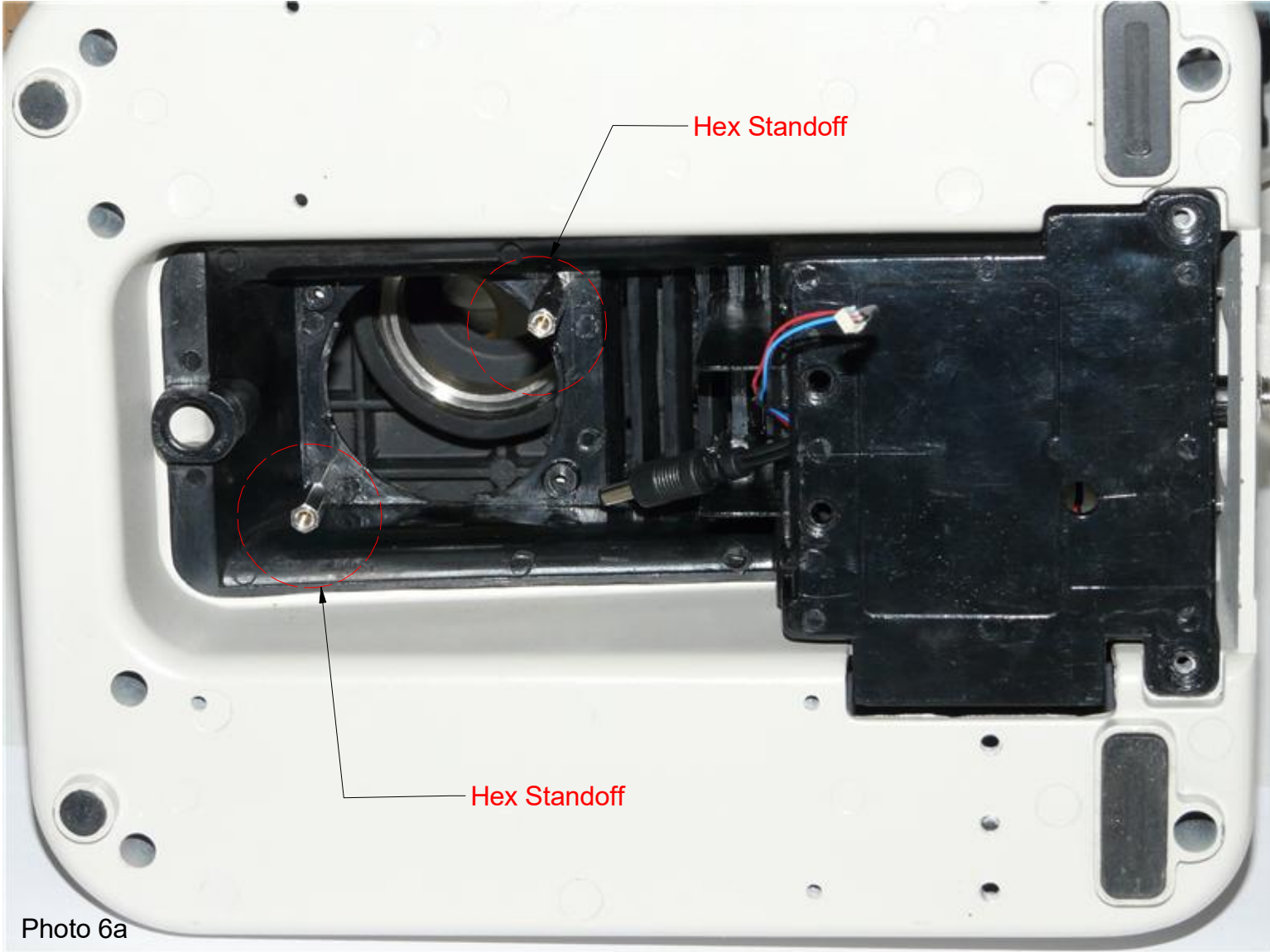


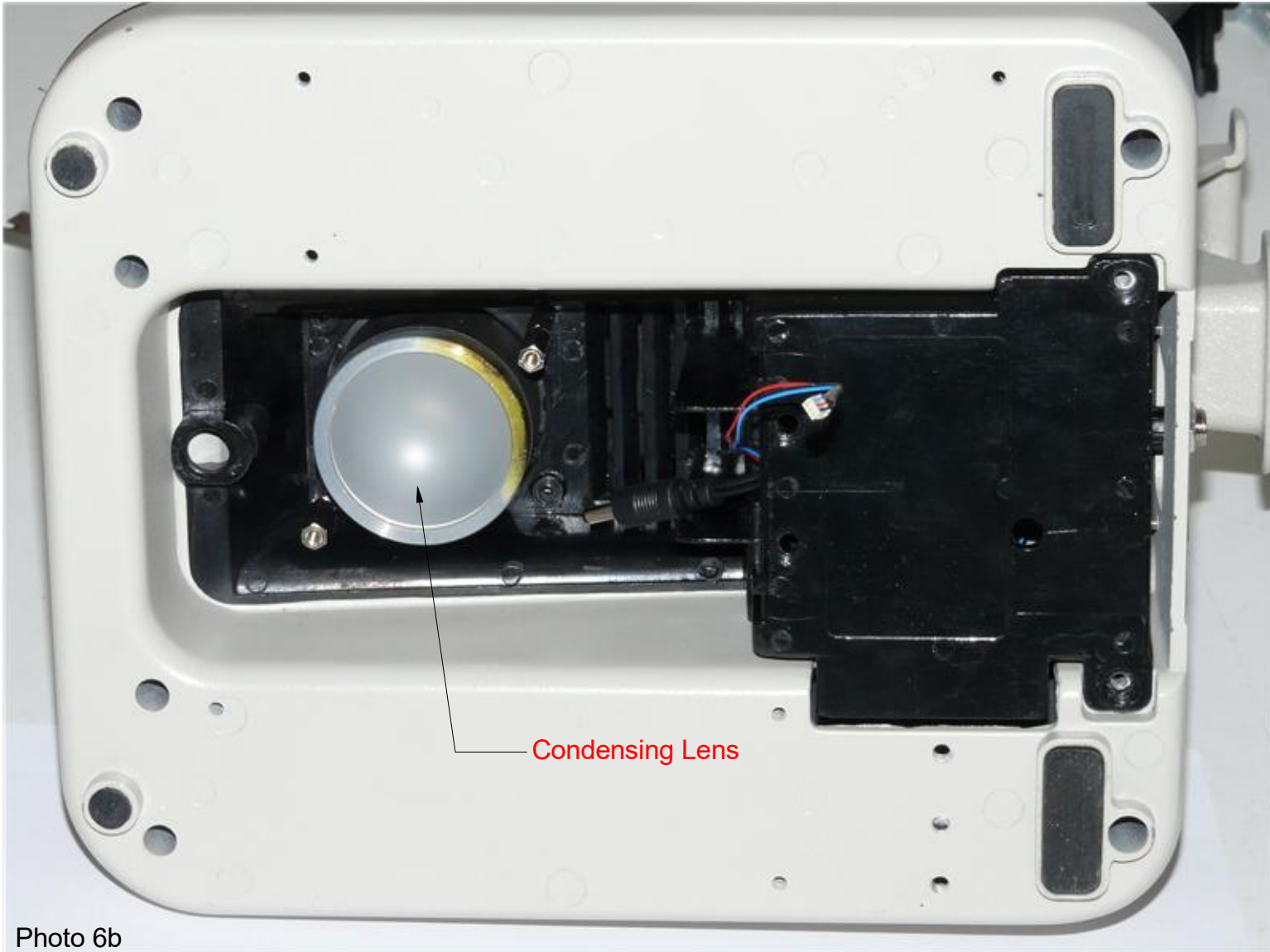
Photo 5e

Han-Seung Yang		11/20/2020	
PN 11053 Nikon Alphaphot-2		REV	
Installation Instructions		5	
SHEET 6		OF	9

Nanodyne Replacement Illuminator for Nikon Alphaphot-2 Microscope Installation Instructions - Step 6. Install hex standoffs and condenser lens.



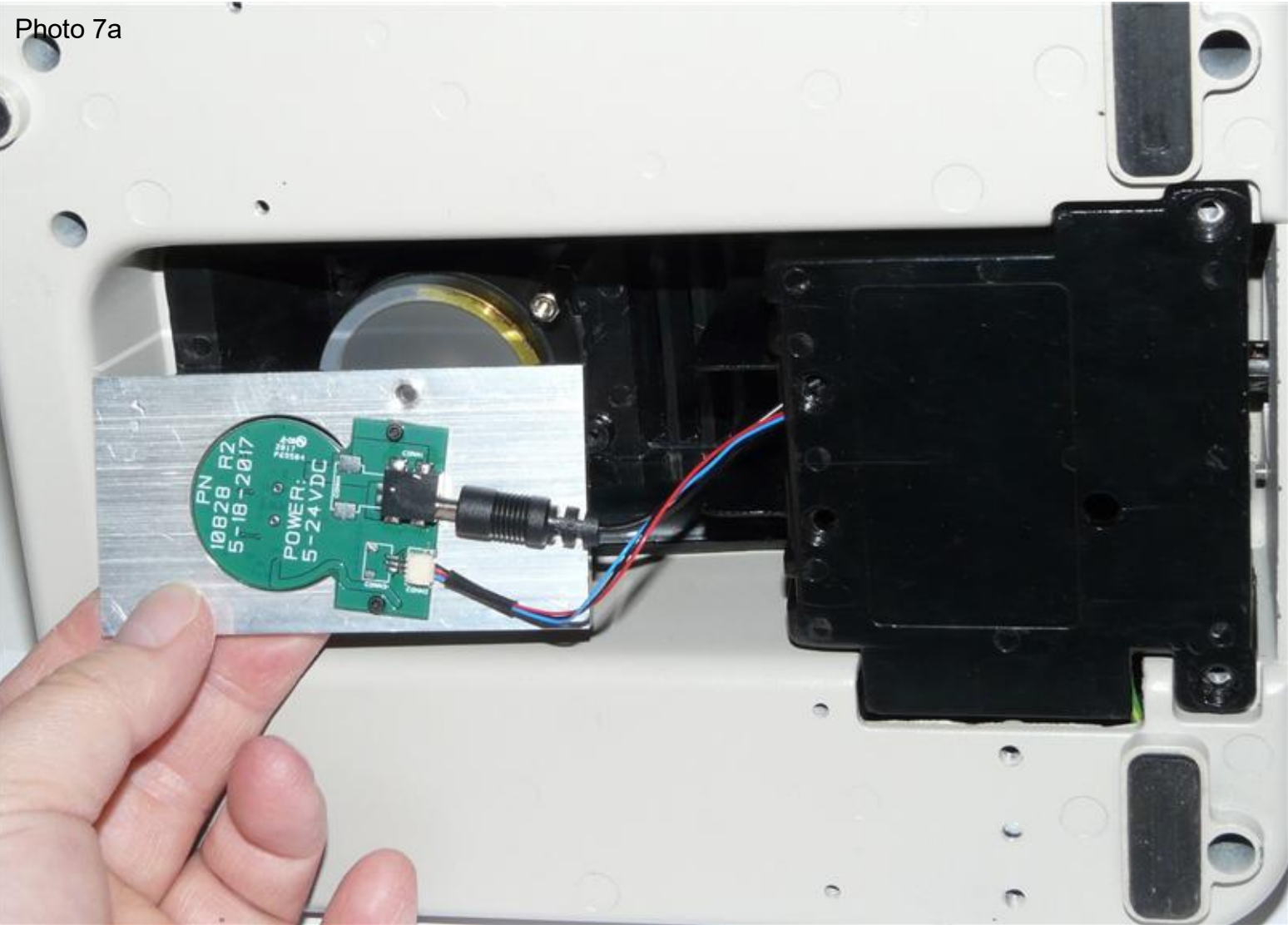
Thread the hex standoffs into the holes, as shown above. Do not tighten them all the way, as some play is needed in order to re-insert the condenser lens.



Re-install the condensing lens and then fully tighten the hex standoffs.

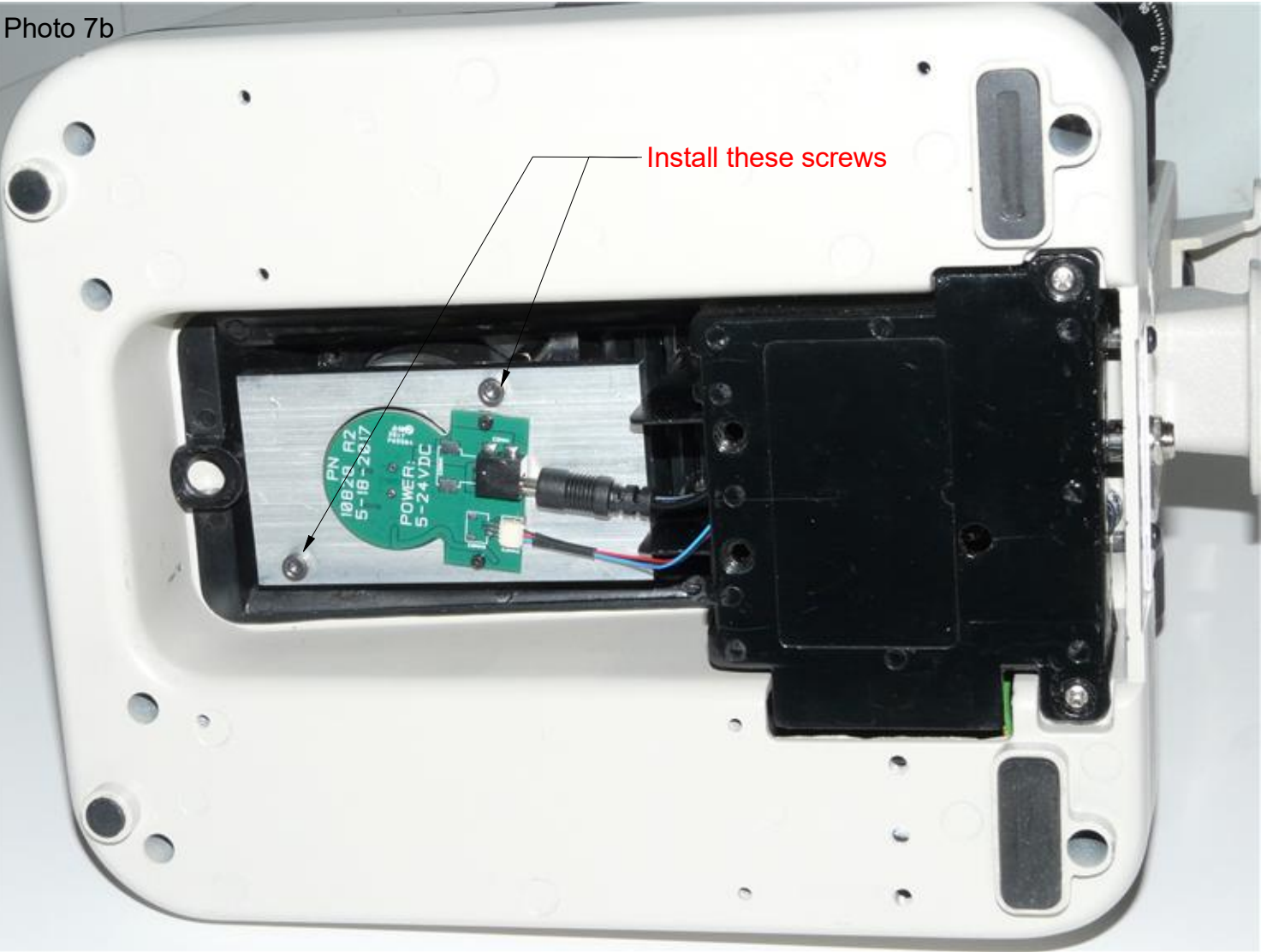
Nanodyne Replacement Illuminator for Nikon Alphaphot-2 Microscope Installation Instructions - Step 7. Install Nanodyne illuminator.

Photo 7a



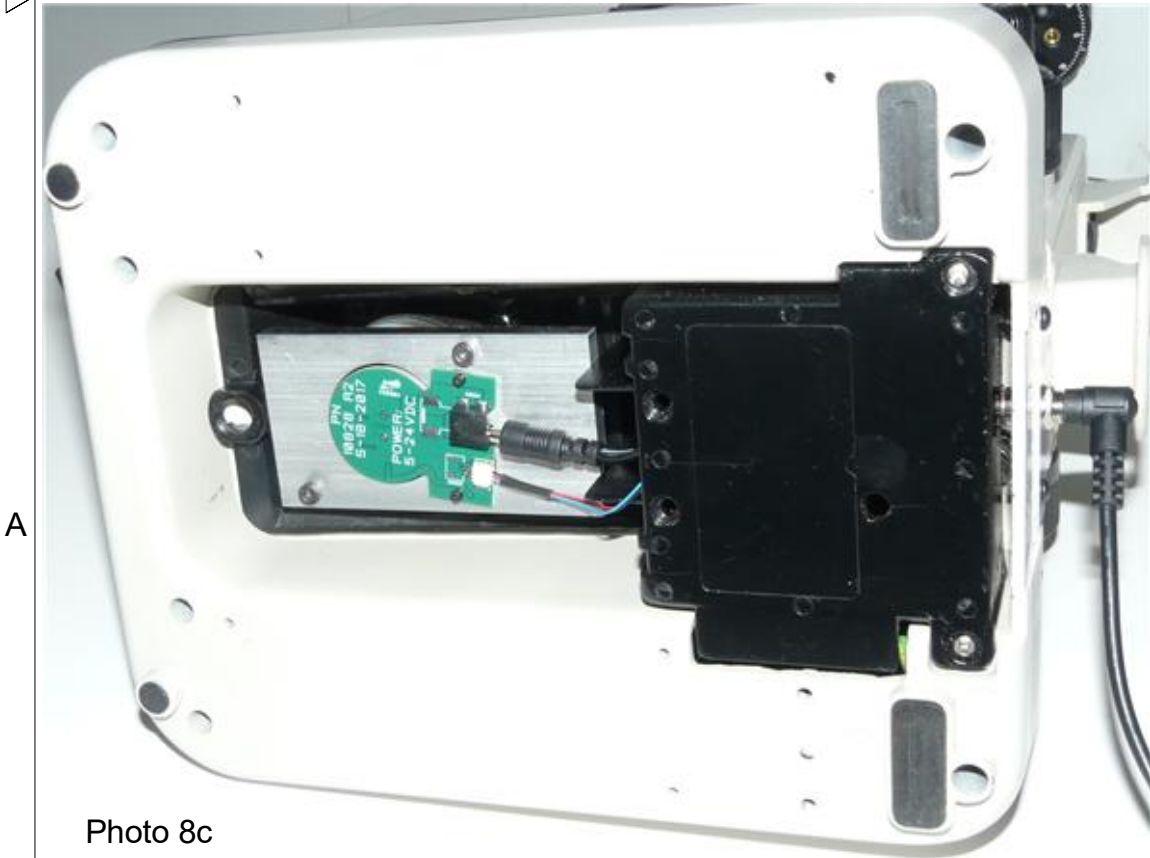
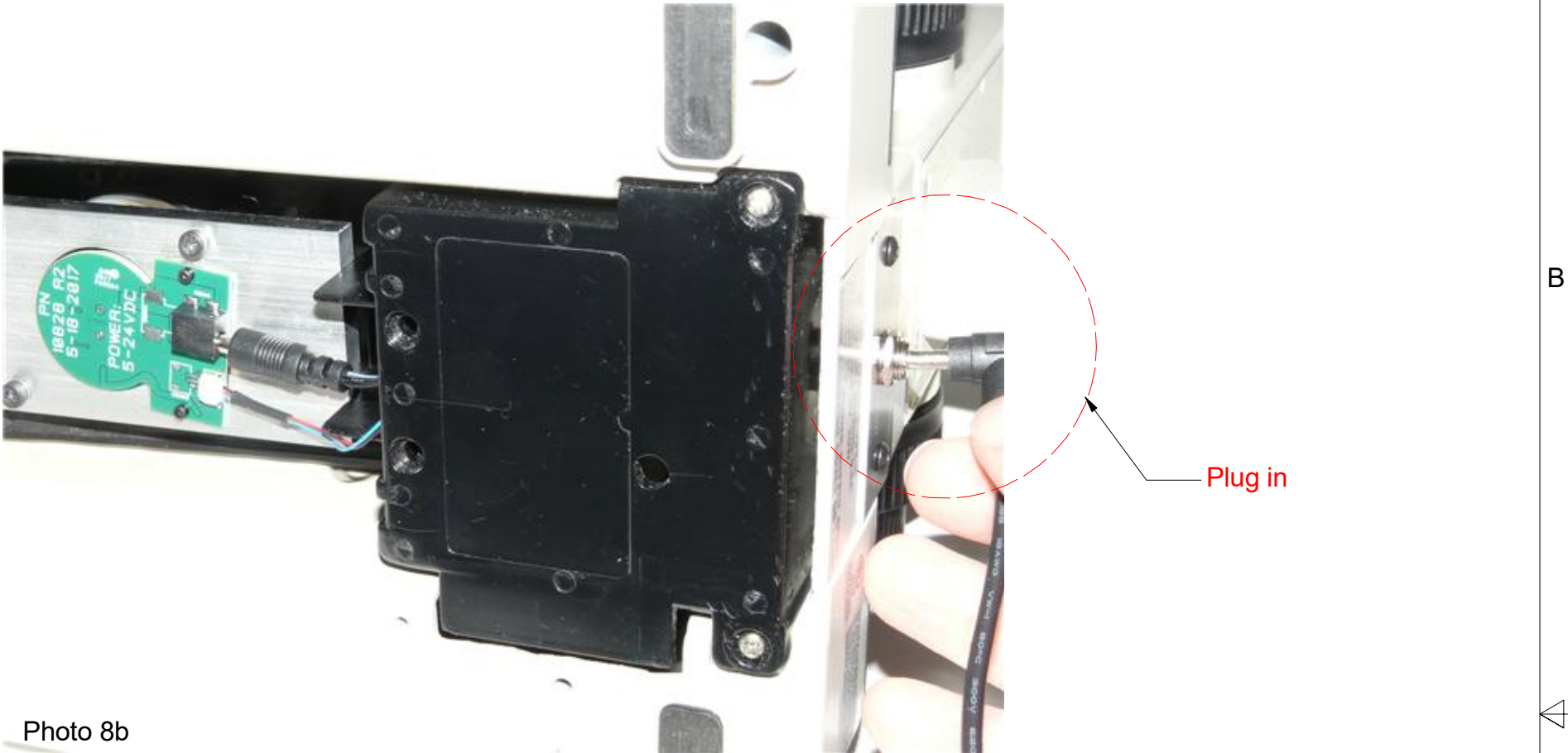
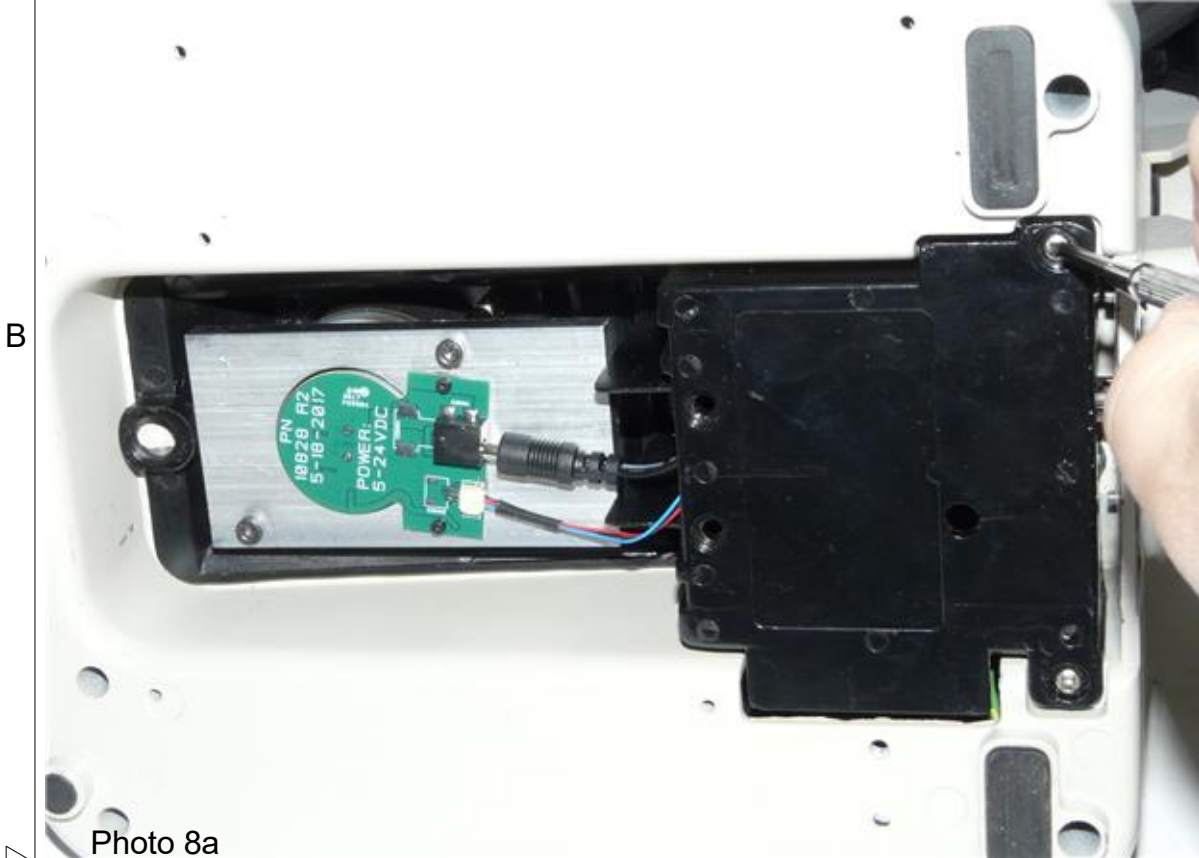
Plug the power supply into the lighting unit, as shown. Also, connect the cable from the potentiometer to the socket on the circuit board. The connector will only seat one way, so do not force it in if it does not fit.

Photo 7b



Install the light assembly by inserting and tightening the provided screws, as shown.

Nanodyne Replacement Illuminator for Nikon Alphaphot-2 Microscope Installation Instructions - Step 8. Re-install light cover (optional) and connect new power supply.



Discard (or keep) the light cover on the bottom of the microscope as it is not necessary anymore, plug in the power supply, and the installation is complete.

Han-Seung Yang		11/20/2020
PN 11053 Nikon Alphaphot-2 Installation Instructions		REV 5
SHEET 9		OF 9