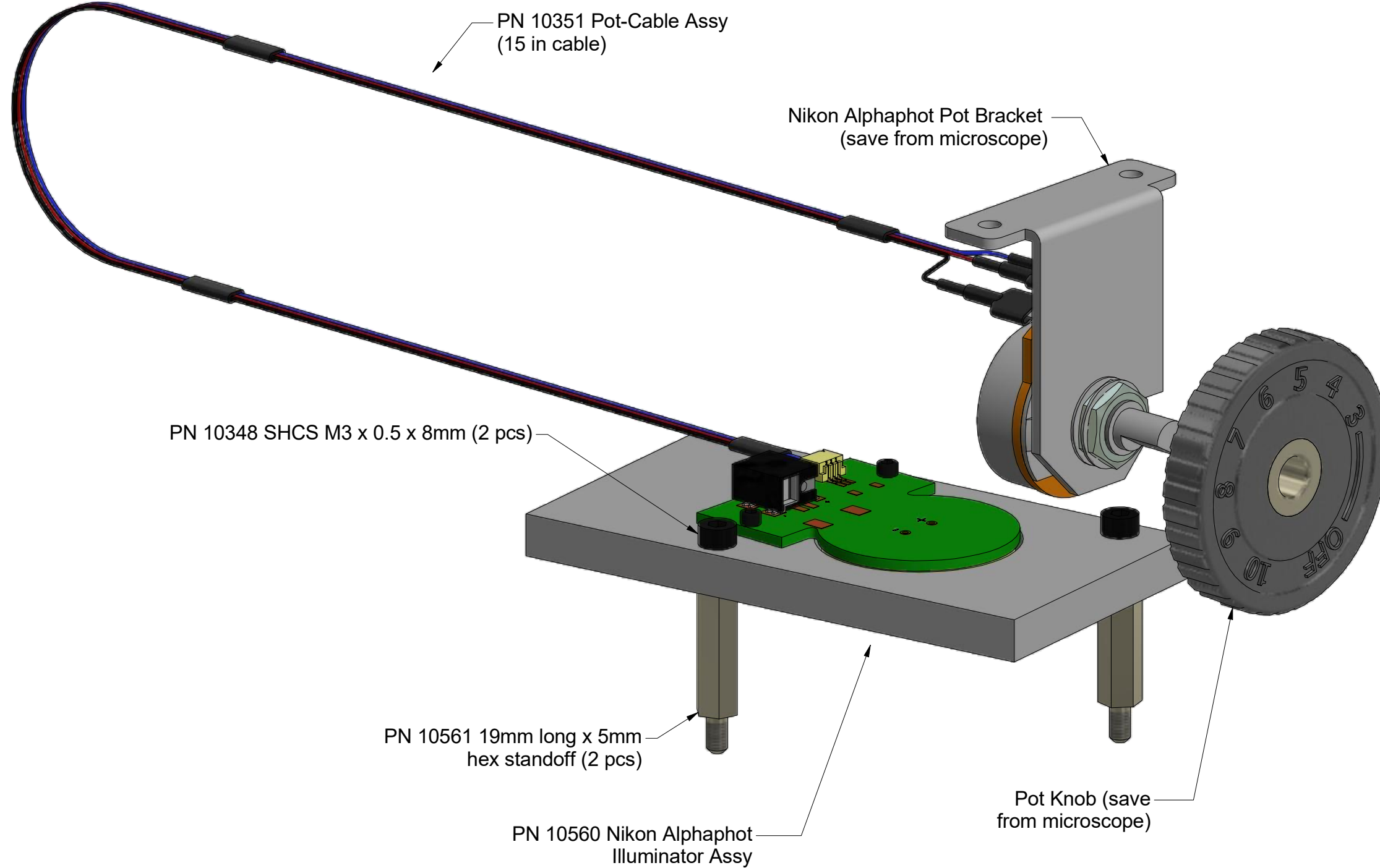


Nanodyne Replacement Illuminator for Nikon Alphaphot Microscope Installation Instructions - Included Items



Parts included but not shown:

PN 10457 Hex Key 2.5mm short arm (for M3 screws)



PN 10733 Power Supply - XP Power 5V 1A and PN 10734 Cable Assy 1.35mm ID x 3.5mm OD RA plug to USB A, 6 foot.

The illuminator may be powered by plugging the cable into the power supply provided, or into a suitable USB port on a computer or other device.

Power supplies are subject to substitution without notice due to availability issues and changes in regulations.



3M VHB tape to secure wires

Wayne Bonin	3/23/2019
PN 10563 Nikon Alphaphot Assembly Instructions	REV 4
SHEET 1 OF 9	

Nanodyne Replacement Illuminator for Nikon Alphaphot Microscope Installation Instructions - Step 1. Remove condenser lens and old lamp housing.



Photo 1a

Begin by removing the condenser lens with a twist as shown above and below.



Photo 1b



Photo 1c

On the underside of the microscope, locate the housing for the light bulb and remove it.

Wayne Bonin	3/23/2019
PN 10563 Nikon Alphaphot Assembly Instructions	REV 4
SHEET 2	OF 9

Nanodyne Replacement Illuminator for Nikon Alphaphot Microscope Installation Instructions - Step 2. Remove old lamp.

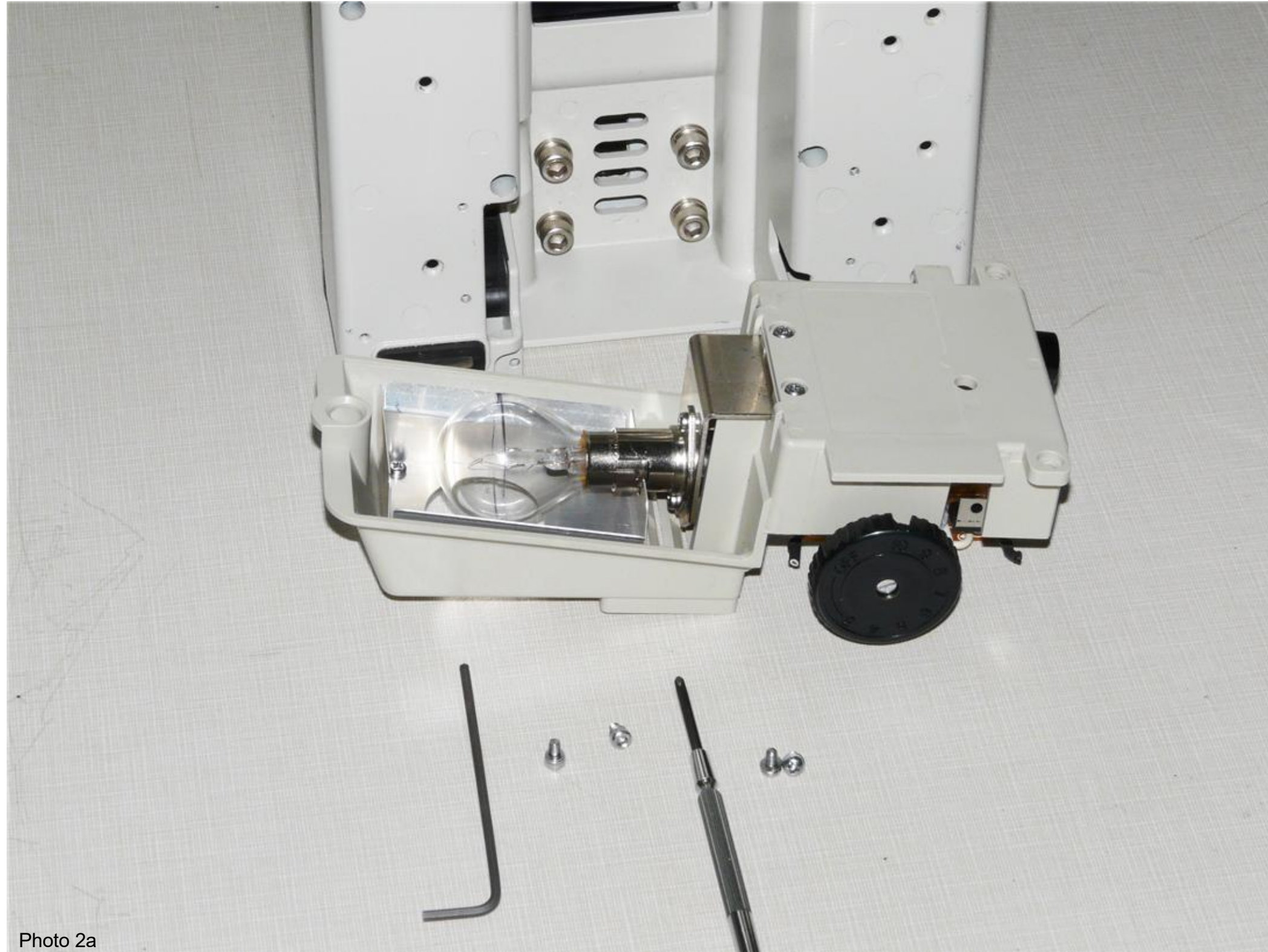
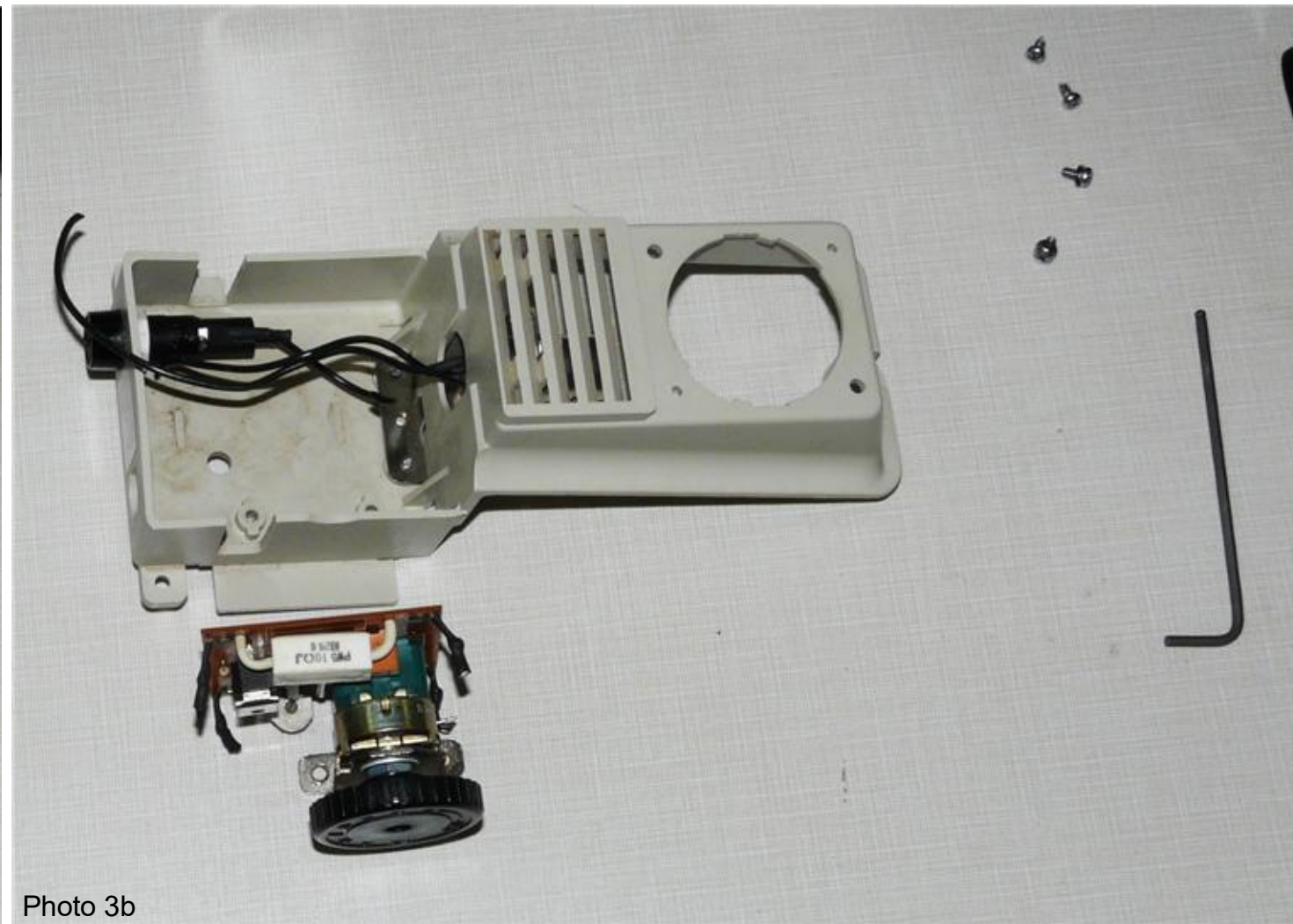
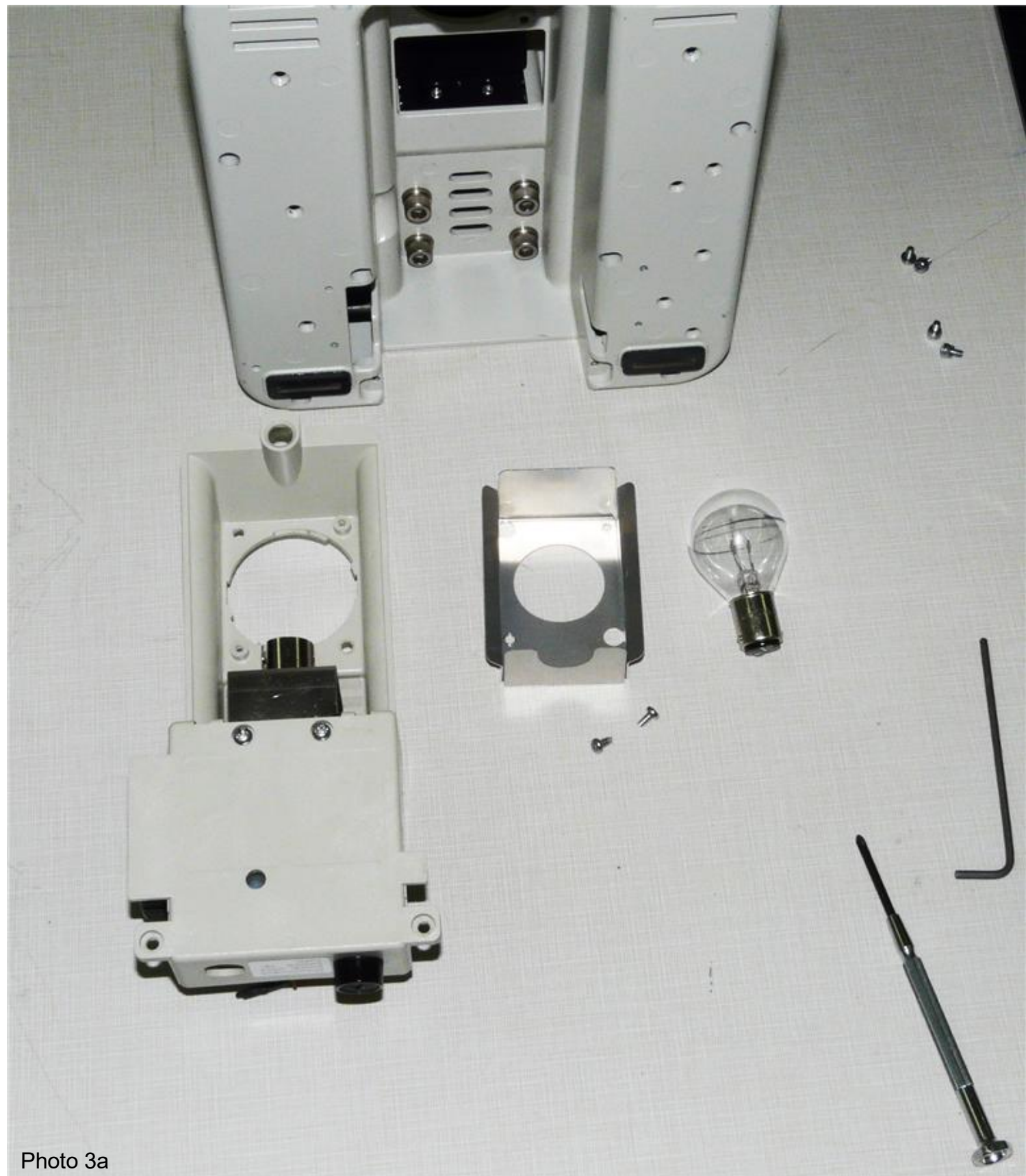


Photo 2a

Remove the lighting unit by unscrewing the four screws that hold it in place.

Wayne Bonin	3/23/2019
PN 10563 Nikon Alphaphot Assembly Instructions	REV 4
SHEET 3 OF 9	

Nanodyne Replacement Illuminator for Nikon Alphaphot Microscope Installation Instructions - Step 3. Remove old parts (bulb, bracket, pot and socket).



Remove the items shown from the lighting unit. These items include the bulb, metal lighting bracket, potentiometer and electronics, and light socket.

Wayne Bonin	3/23/2019
PN 10563 Nikon Alphaphot Assembly Instructions	REV 4
SHEET 4	OF 9

4

3

2

1

Nanodyne Replacement Illuminator for Nikon Alphaphot Microscope Installation Instructions - Step 4. Remove pot knob and bracket.

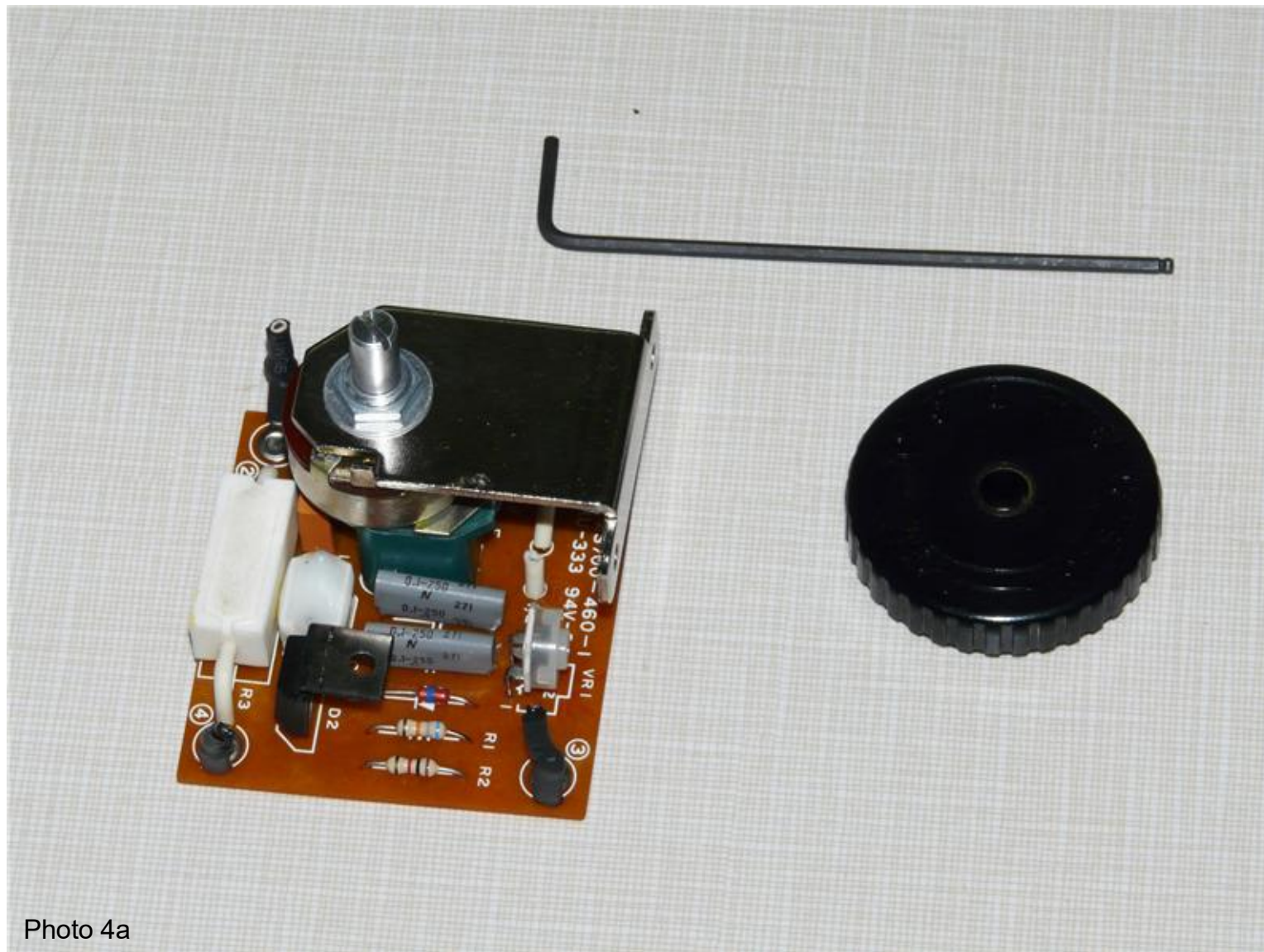


Photo 4a

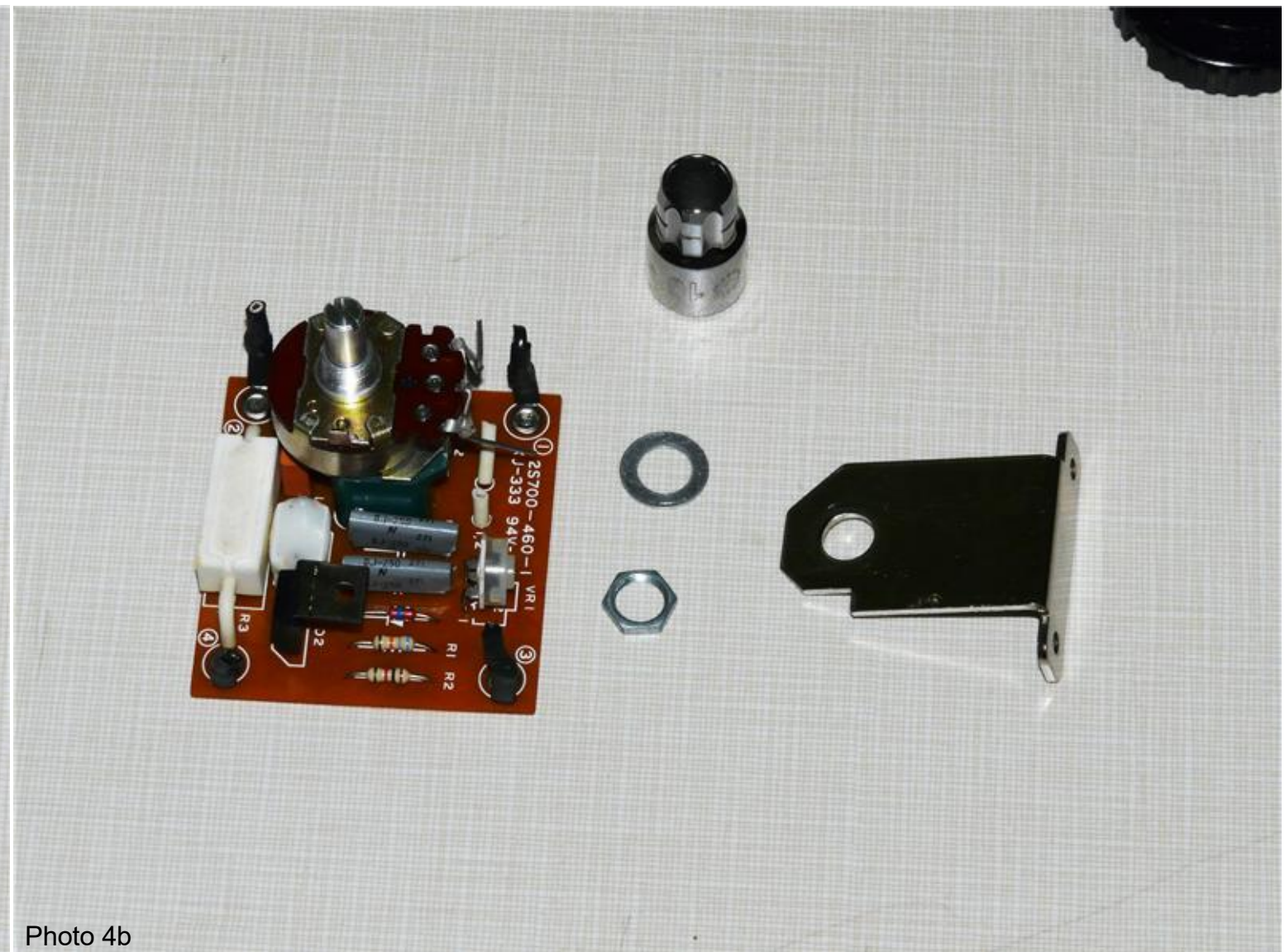


Photo 4b

Disconnect the potentiometer knob and bracket using a 10mm socket, as shown above. Keep these components for later.

Wayne Bonin	3/23/2019
PN 10563 Nikon Alphaphot Assembly Instructions	REV 4
SHEET 5	OF 9

4

3

2

1

Nanodyne Replacement Illuminator for Nikon Alphaphot Microscope Installation Instructions - Step 5. Install new pot and power cord.



Photo 5a

Place the new potentiometer onto the existing bracket and screw in place. Then, install the existing knob onto the new potentiometer. Route the cable through the light socket hole, as shown.

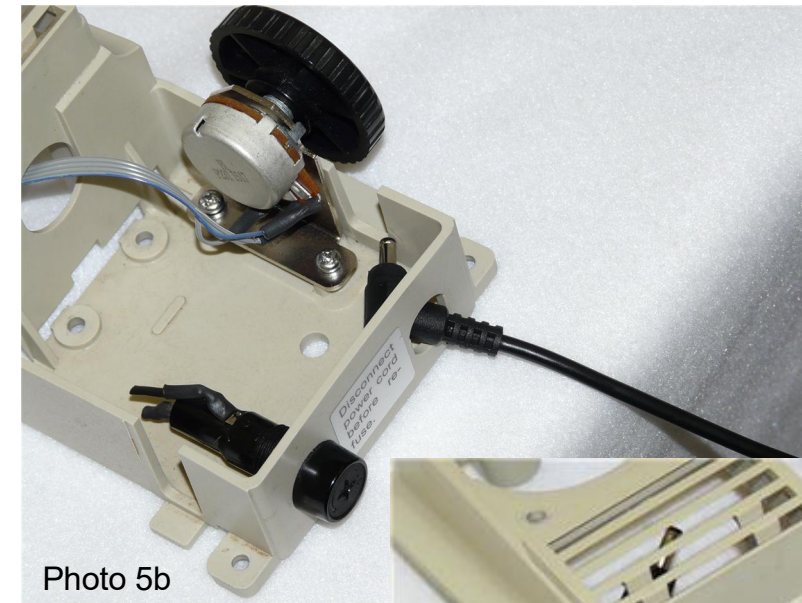


Photo 5b



Photo 5c

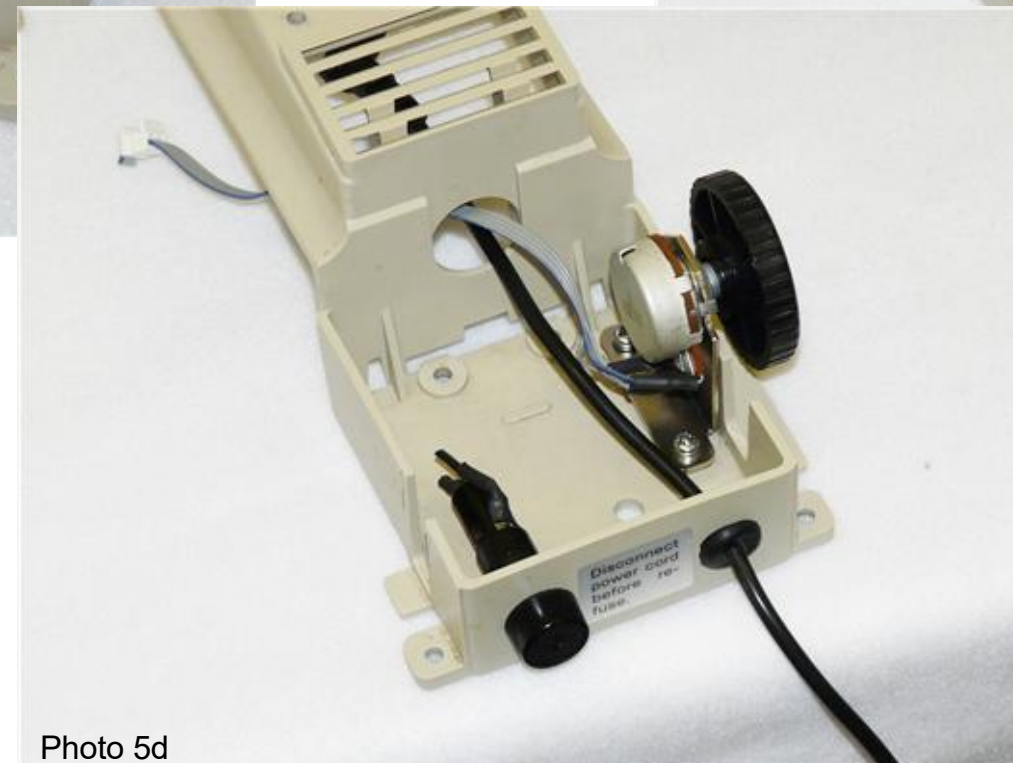


Photo 5d

Route the new power cord through the existing power cord hole, and through the light socket hole. Seat the provided grommet in the existing power cord hole.

Wayne Bonin	3/23/2019
PN 10563 Nikon Alphaphot Assembly Instructions	REV 4
SHEET 6 OF 9	



Nanodyne Replacement Illuminator for Nikon Alphaphot Microscope Installation Instructions - Step 6. Install hex standoffs and condenser lens.



Thread the hex standoffs into the holes, as shown above. Do not tighten them all the way, as some play is needed in order to re-insert the condenser lens.

Re-install the condensing lens and then fully tighten the hex standoffs.

Wayne Bonin	3/23/2019
PN 10563 Nikon Alphaphot Assembly Instructions	REV 4
SHEET 7	OF 9



Nanodyne Replacement Illuminator for Nikon Alphaphot Microscope Installation Instructions - Step 7. Install Nanodyne illuminator.



Photo 7a

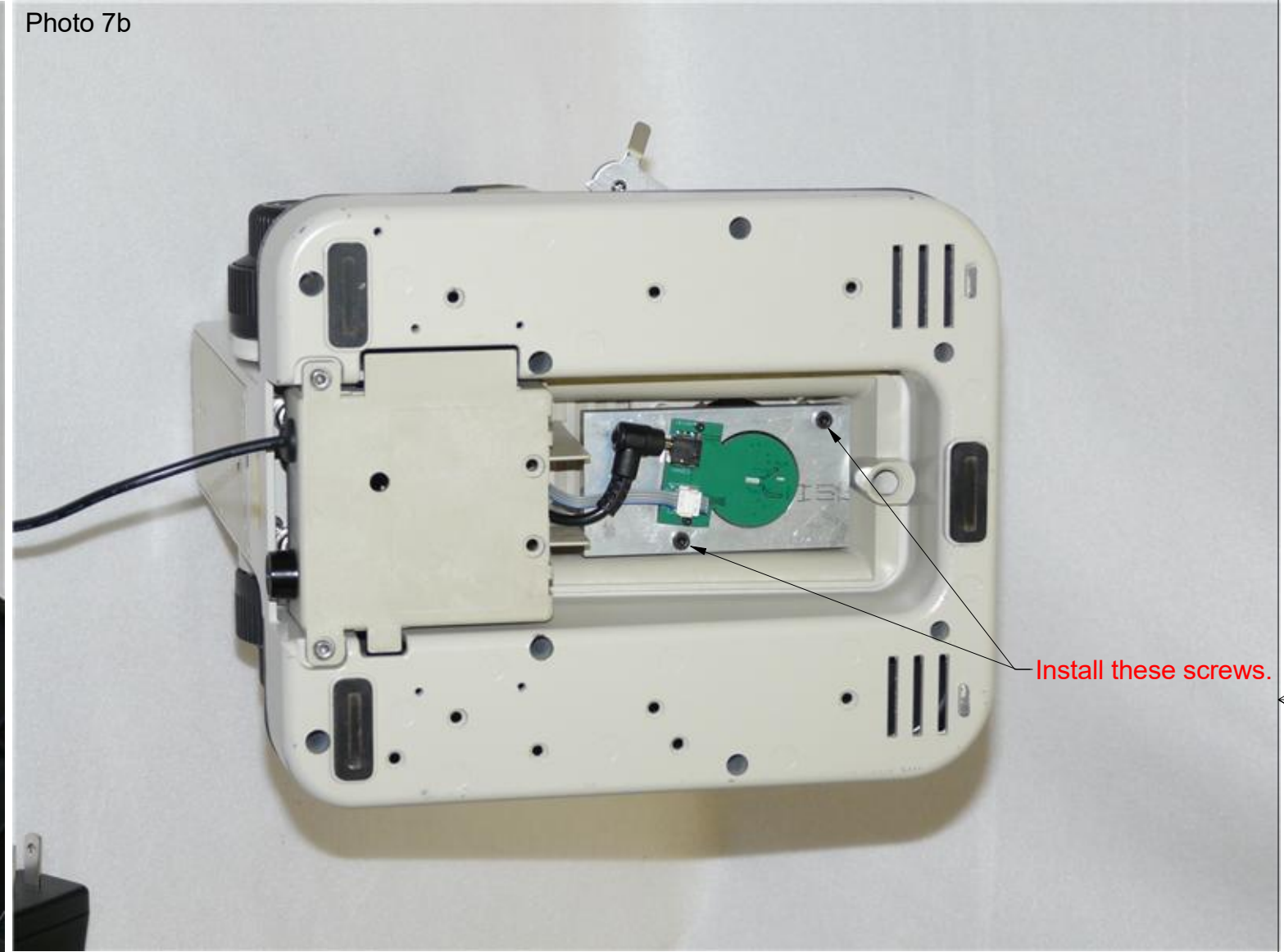


Photo 7b

Install these screws.

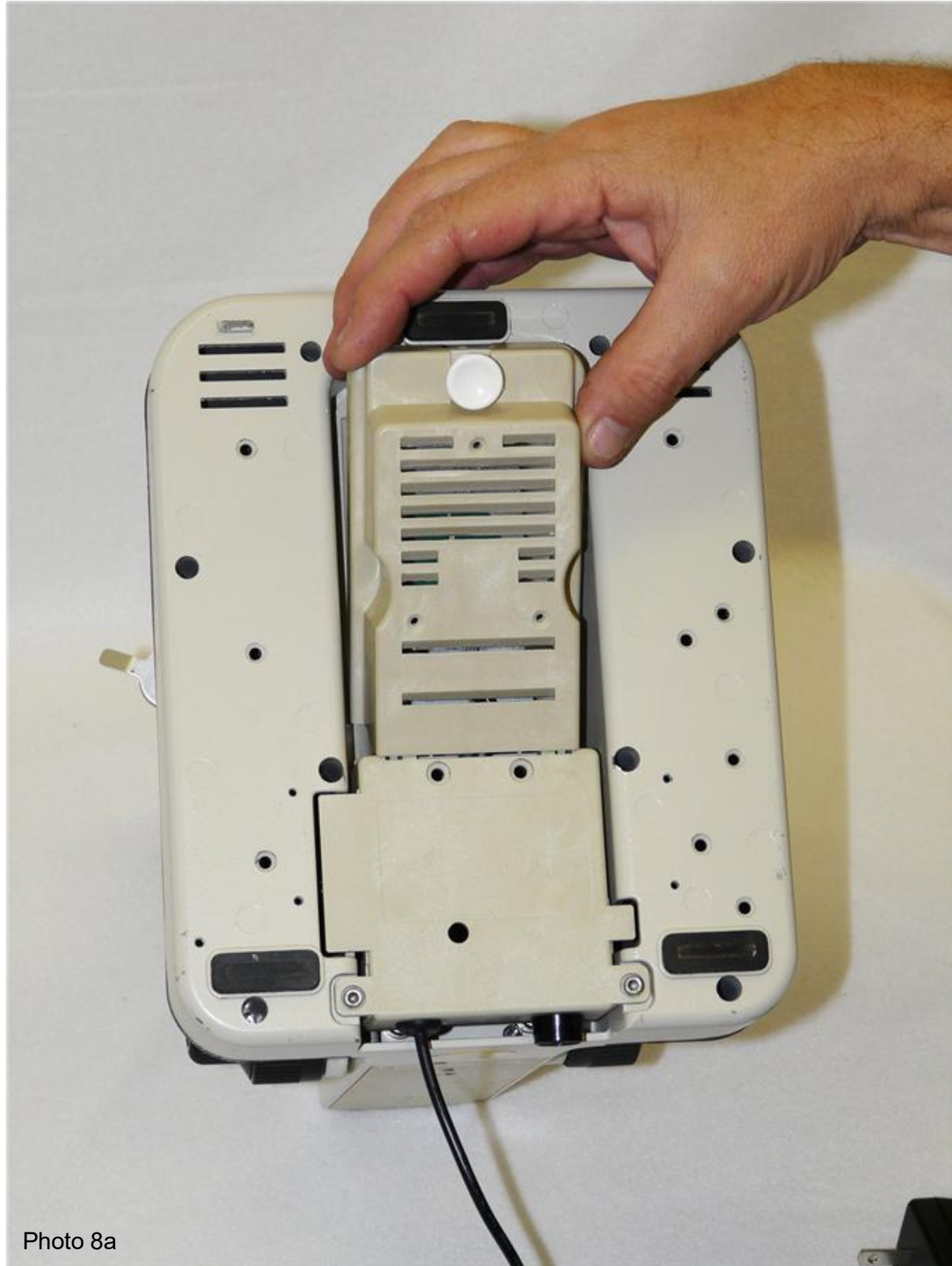
Plug the power supply into the lighting unit, as shown. Also, connect the cable from the potentiometer to the socket on the circuit board. The connector will only seat one way, so do not force it in if it does not fit.

Install the light assembly by inserting and tightening the provided screws, as shown.

Wayne Bonin	3/23/2019
PN 10563 Nikon Alphaphot Assembly Instructions	REV 4
SHEET 8	OF 9



Nanodyne Replacement Illuminator for Nikon Alphaphot Microscope Installation Instructions - Step 8. Re-install light cover and connect new power supply.



Re-install the light cover on the bottom of the microscope, plug in the power supply, and the installation is complete.

Photo 8a

Wayne Bonin	3/23/2019
PN 10563 Nikon Alphaphot Assembly Instructions	REV 4
SHEET 9	OF 9