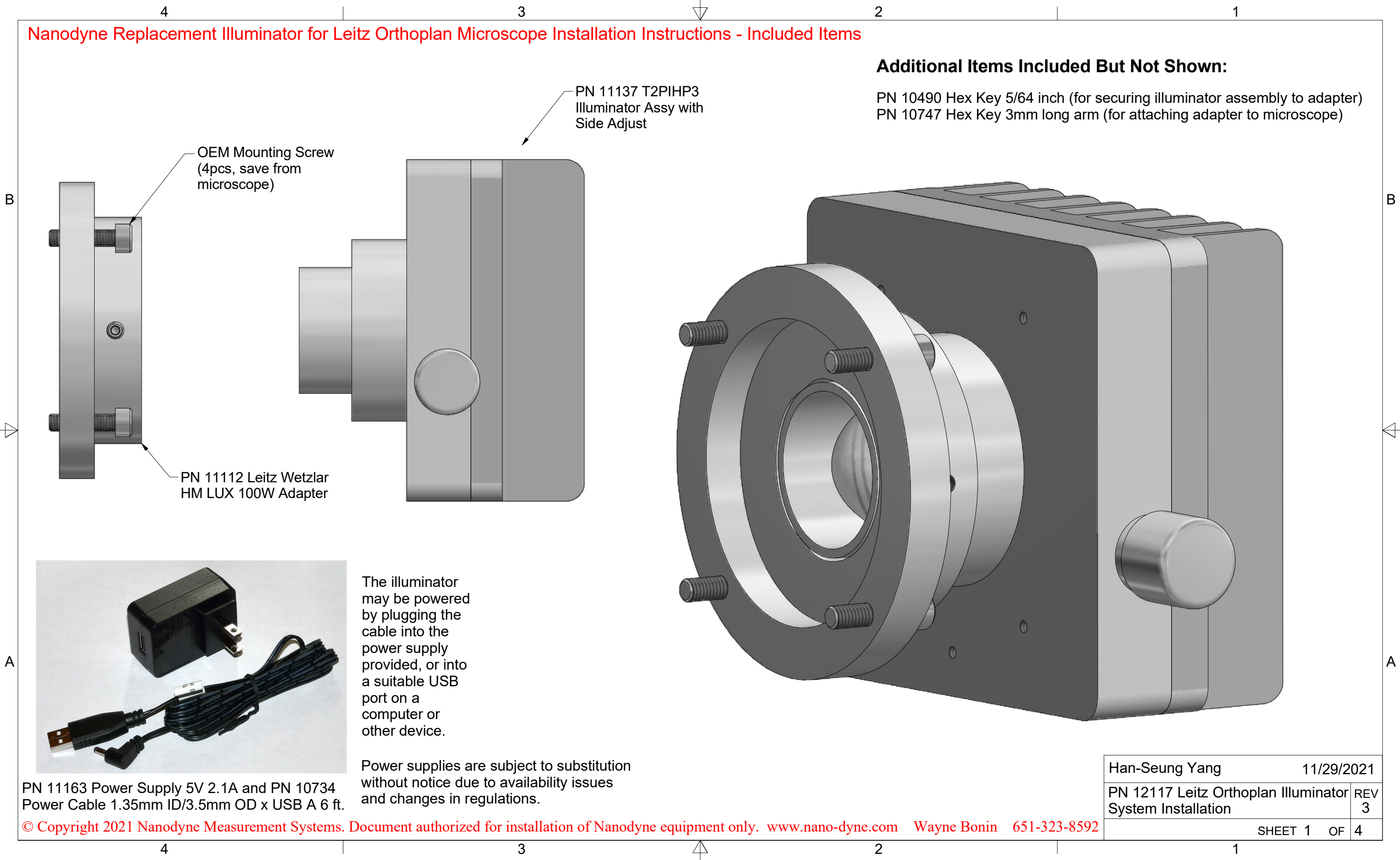


Nanodyne Replacement Illuminator for Leitz Orthoplan Microscope Installation Instructions - Included Items

Additional Items Included But Not Shown:

- PN 10490 Hex Key 5/64 inch (for securing illuminator assembly to adapter)
- PN 10747 Hex Key 3mm long arm (for attaching adapter to microscope)



OEM Mounting Screw
(4pcs, save from
microscope)

PN 11137 T2PIHP3
Illuminator Assy with
Side Adjust

PN 11112 Leitz Wetzlar
HM LUX 100W Adapter



The illuminator may be powered by plugging the cable into the power supply provided, or into a suitable USB port on a computer or other device.

Power supplies are subject to substitution without notice due to availability issues and changes in regulations.

PN 11163 Power Supply 5V 2.1A and PN 10734 Power Cable 1.35mm ID/3.5mm OD x USB A 6 ft.

Han-Seung Yang	11/29/2021
PN 12117 Leitz Orthoplan Illuminator System Installation	REV 3
SHEET 1 OF 4	

Nanodyne Replacement Illuminator for Leitz Orthoplan Microscope Installation Instructions - Step 1. Remove Original Lamp Housing and Mounting Ring.



1. Original lamp housing.



Photo 1b

2. Original lamp housing removed.

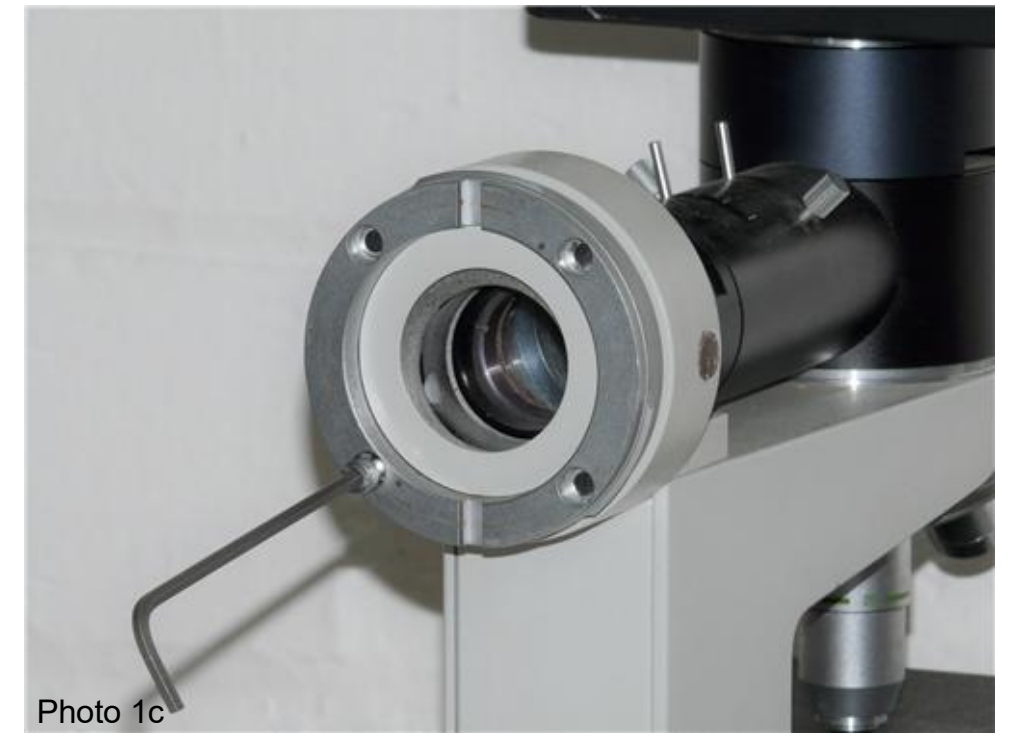


Photo 1c

3. Remove mounting ring screws.



Photo 1d

4. Mounting ring and screws (save the screws for attaching the Nanodyne adapter).



Photo 1e

5. Microscope port after removing the original mounting ring.

*Note: Photos show Leitz Wetzlar HM LUX microscope, however installation procedure is the same.

Han-Seung Yang	11/29/2021
PN 12117 Leitz Orthoplan Illuminator System Installation	REV 3
SHEET 2	OF 4

Nanodyne Replacement Illuminator for Leitz Orthoplan Microscope Installation Instructions - Step 2. Install Nanodyne Adapter and Illuminator.



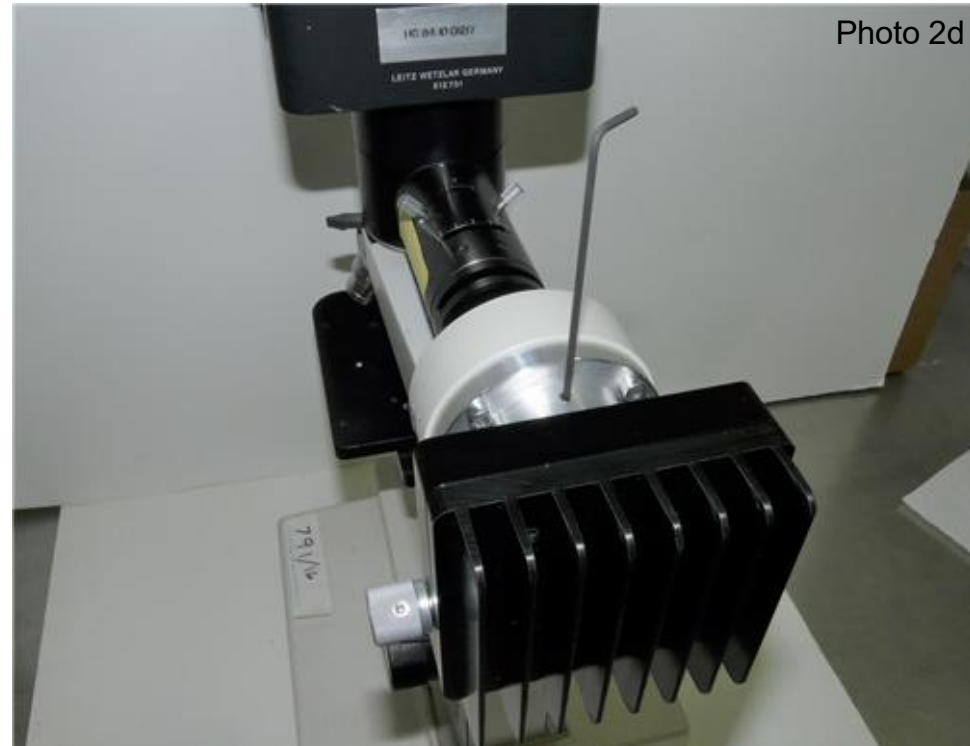
1. Align the Nanodyne adapter with the microscope.



2. Secure the Nanodyne adapter to the microscope with the original screws (M4 x 0.7 x 16mm).



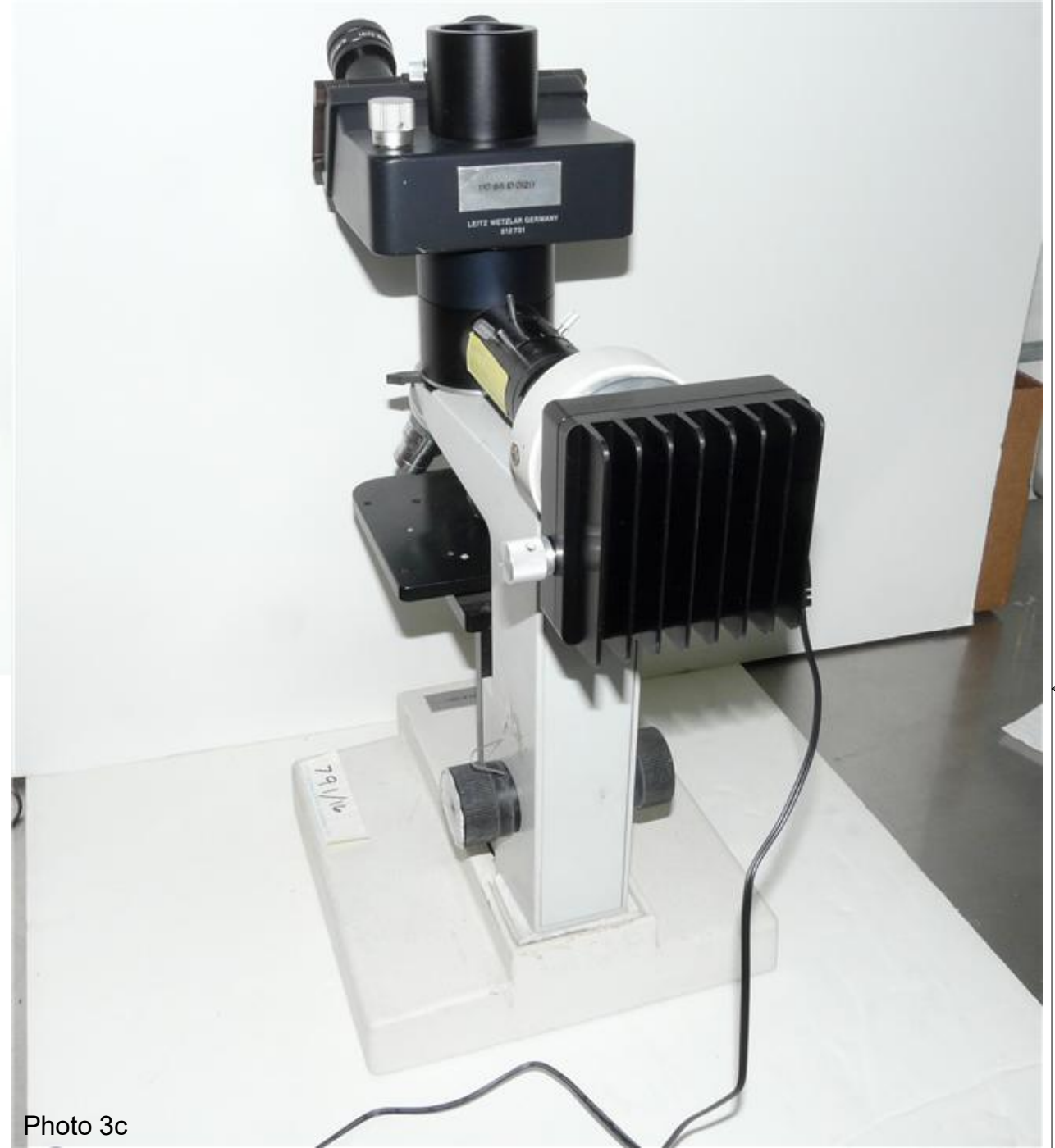
3. Insert the Nanodyne illuminator into the Nanodyne adapter



4. Secure the illuminator by tightening the set screw with the 5/64 inch hex key as shown above.

Note that the adapter can be installed any of 4 ways, so the set screw could alternately be oriented to either side or down if you prefer.

Nanodyne Replacement Illuminator for Leitz Orthoplan Microscope Installation Instructions - Step 3. Connect new Power Supply.



Connect the USB end of the the power cable to the power supply.

Plug the power supply into an outlet.

Plug the other end of the power cable into the illuminator as shown in the photos.

It is now ready to use.

Han-Seung Yang	11/29/2021
PN 12117 Leitz Orthoplan Illuminator System Installation	REV 3
SHEET 4	OF 4