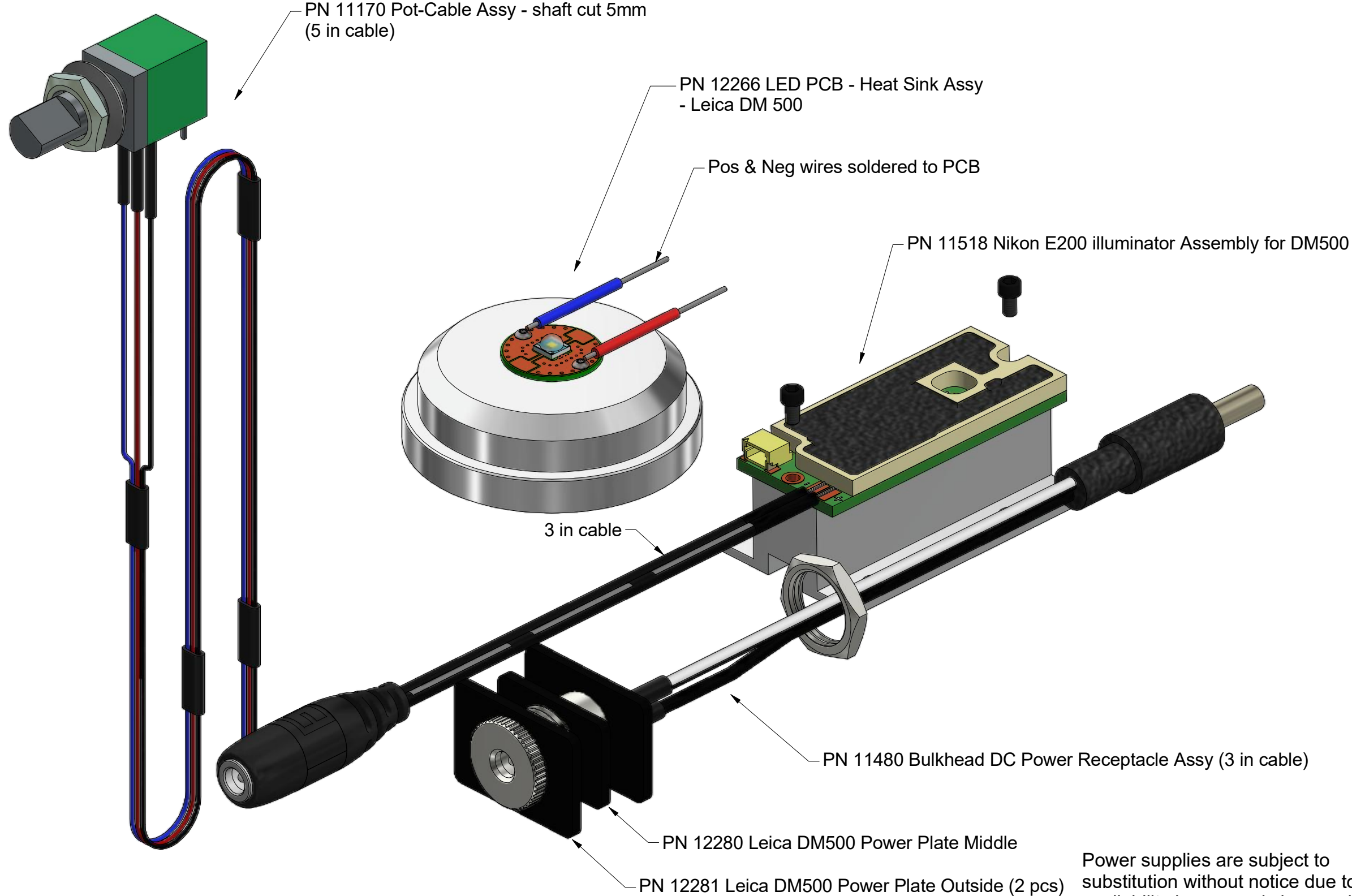


Nanodyne Replacement Illuminator for Leica DM500/750 Microscope Installation Instructions: Included Items



PN 10736 Rubber plug to block unused AC power receptacle.



PN 10733 Power Supply - XP Power 5V 1A and PN 10734 Cable Assy 1.35mm ID x 3.5mm OD RA plug to USB A, 6 foot.

The illuminator may be powered by plugging the cable into the power supply provided, or into a suitable USB port on a computer or other device.



Tape to secure wires.

Power supplies are subject to substitution without notice due to availability issues and changes in regulations.

Han-Seung Yang	12/16/2022	
PN 12244 Leica DM500 Illuminator System Installation Instruction		REV 1
	SHEET 1	OF 8

Nanodyne Replacement Illuminator for Leica DM500/750 Microscope Installation Instructions: Step 1. Remove bottom cover, lens assembly and OEM LED holder.



photo 1a

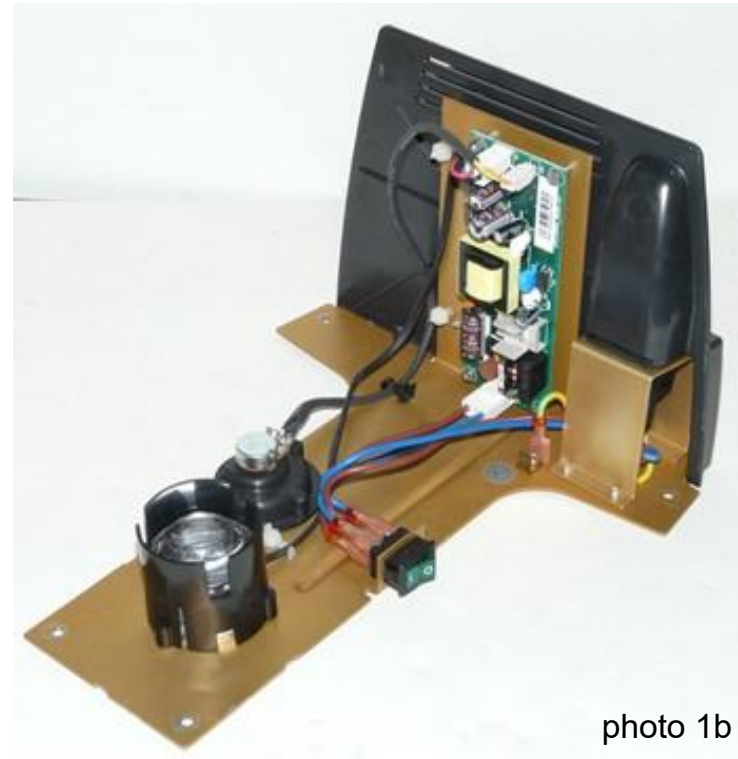


photo 1b



photo 1c

The photos 1a and 1b show the microscope frame this illuminator system was designed for. The unit we obtained for photo 1b is a microscope base without the upper frame sent from a customer.

Flip the microscope base to face bottom cover and remove 3 screws holding condenser lens assembly.

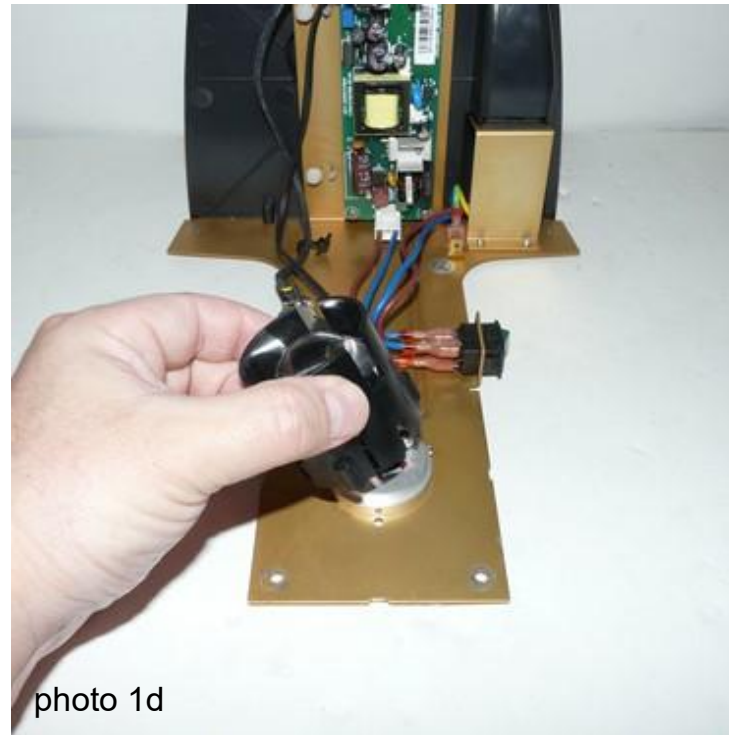


photo 1d

Remove condensor lens assembly.



photo 1e

Disconnect the OEM LED cable.

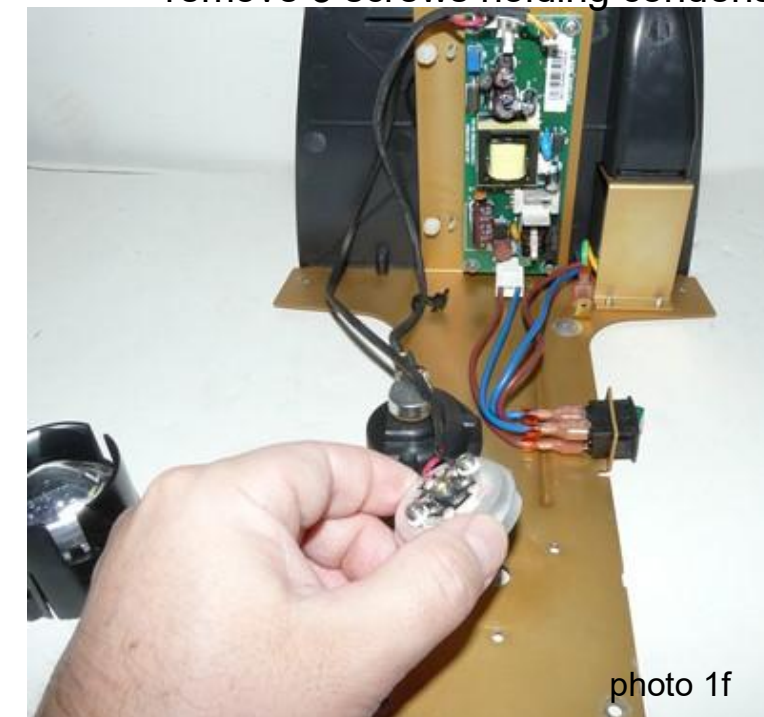
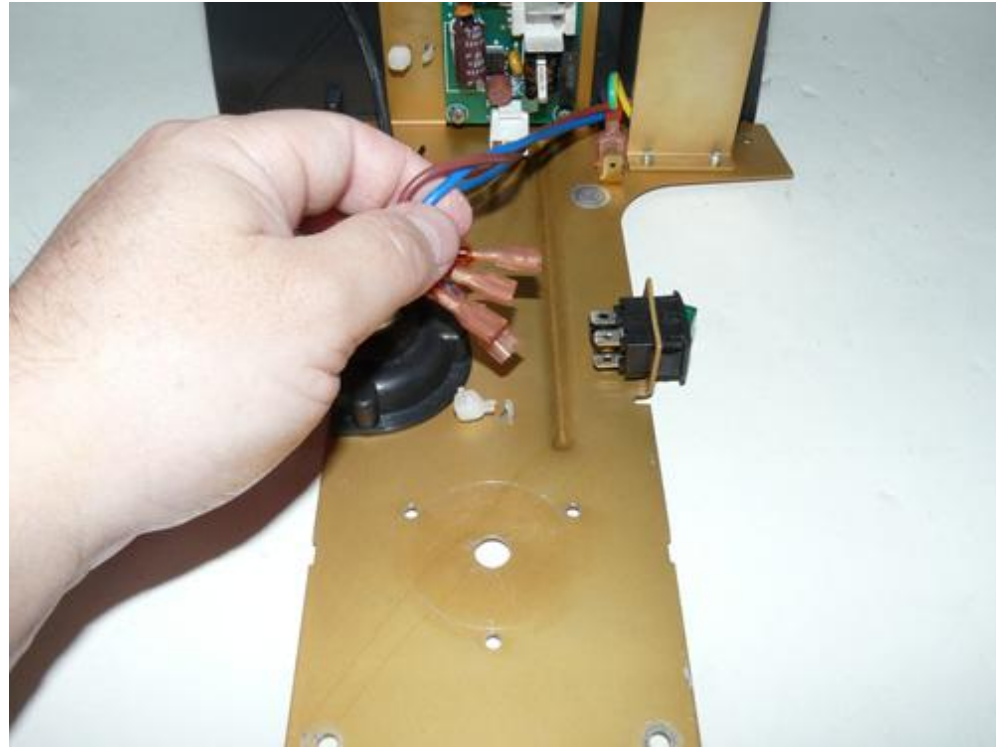


photo 1f

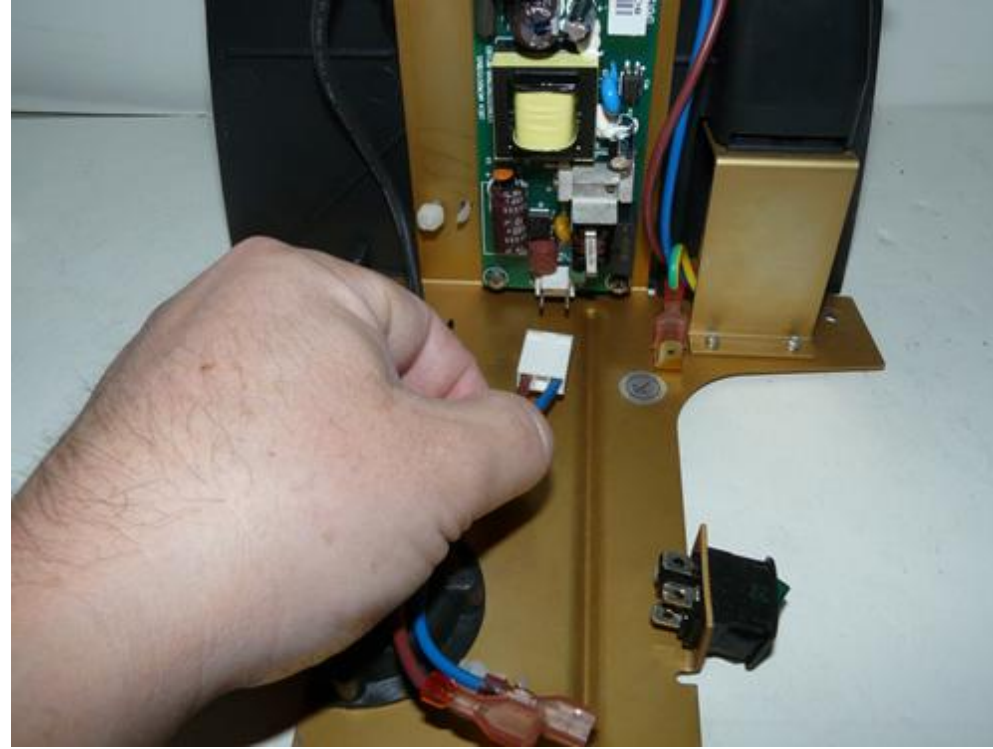
Remove the OEM LED holder.

Han-Seung Yang	12/16/2022
PN 12244 Leica DM500 Illuminator System Installation Instruction	REV 1
SHEET 2 OF 8	

Nanodyne Replacement Illuminator for Leica DM500/750 Microscope Installation Instructions: Step 2. Remove old adjustment pot and electrical wiring.



Unplug the electrical wiring from the AC switch.



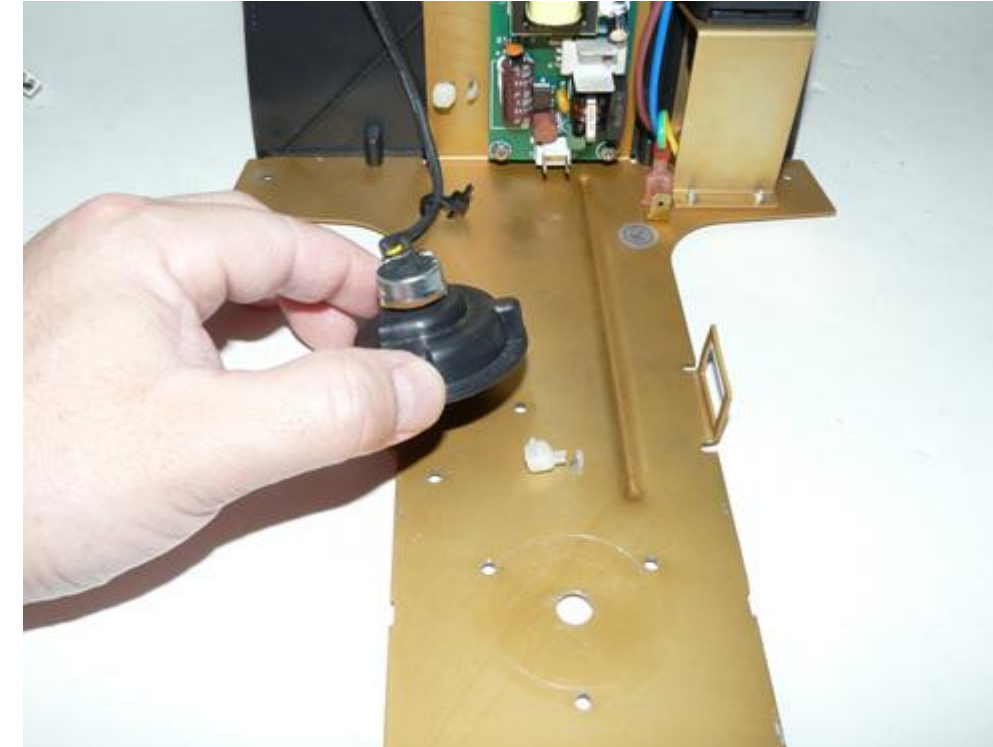
Unplug the electrical wiring from the old PCB.



Depress the plastic clips on each side of the AC power switch and push it out.



Remove 3 screws holding intensity adjustment pot housing.



Remove intensity adjustment pot housing. Keep it for later installation.



Unplug intensity adjustment cable from the original PCB.

Han-Seung Yang	12/16/2022
PN 12244 Leica DM500 Illuminator System Installation Instruction	REV 1
SHEET 3 OF 8	

Nanodyne Replacement Illuminator for Leica DM500/750 Microscope Installation Instructions: Step 3. Remove old adjustment pot and electrical wiring (continued).

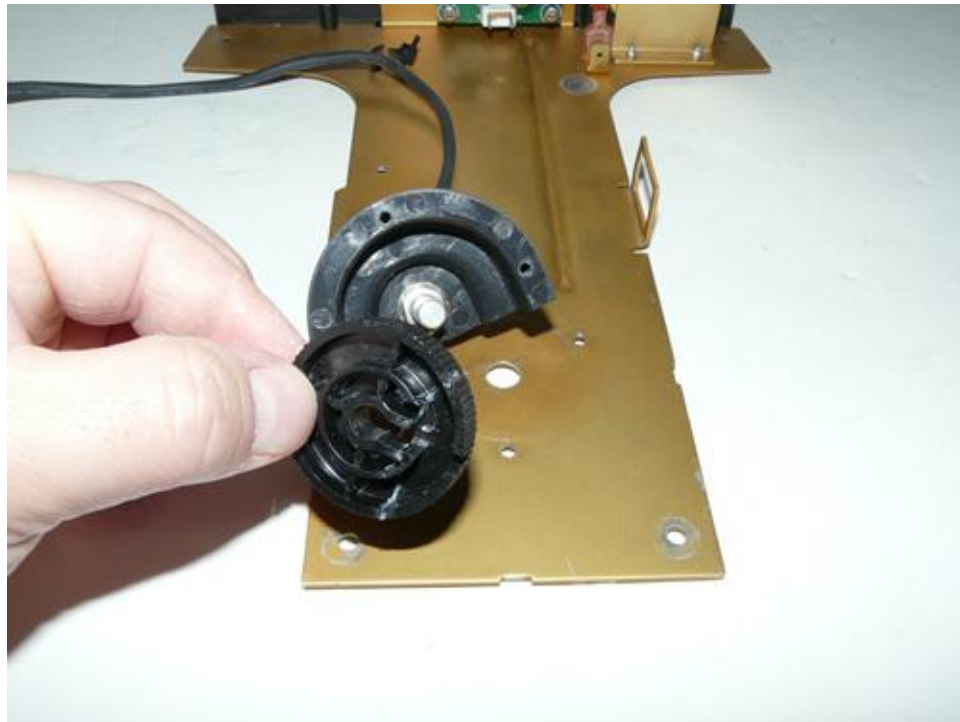
4

3

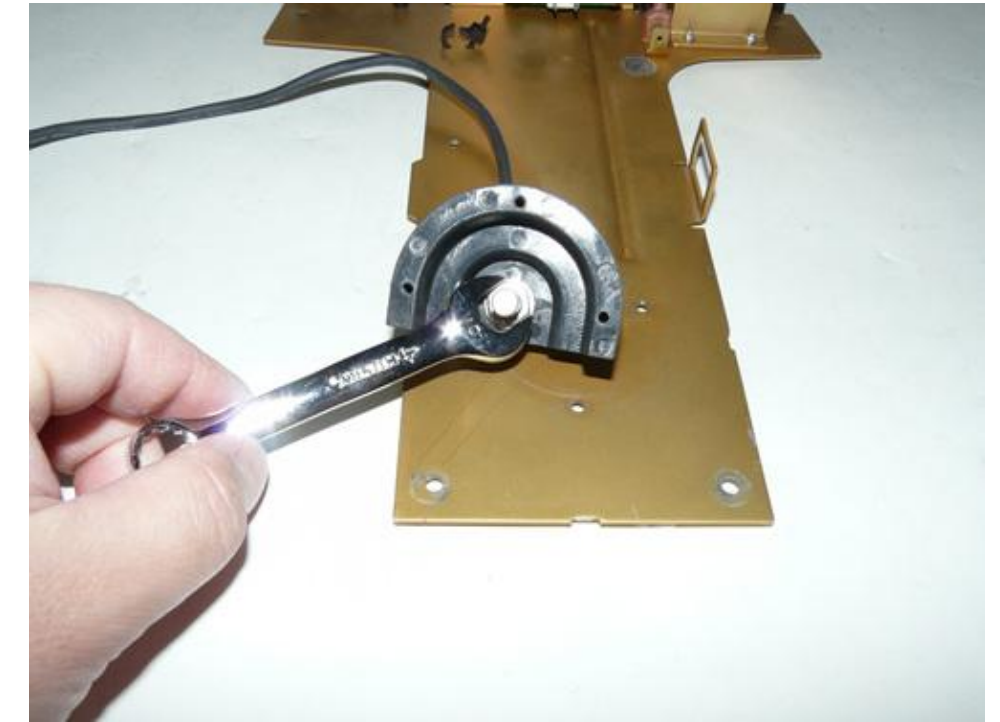
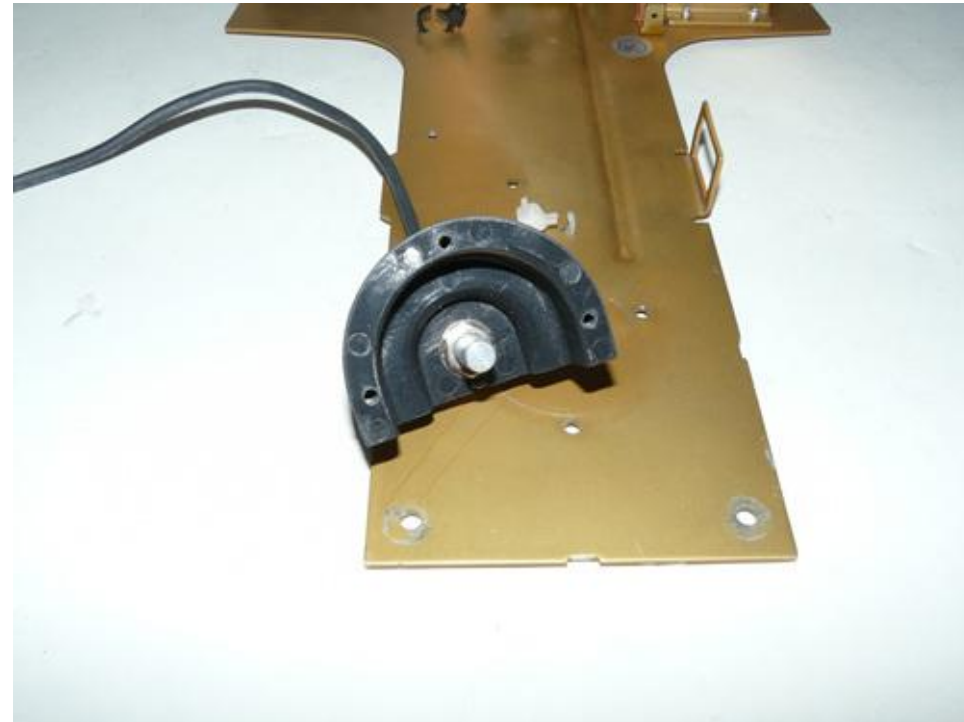
2

1

B

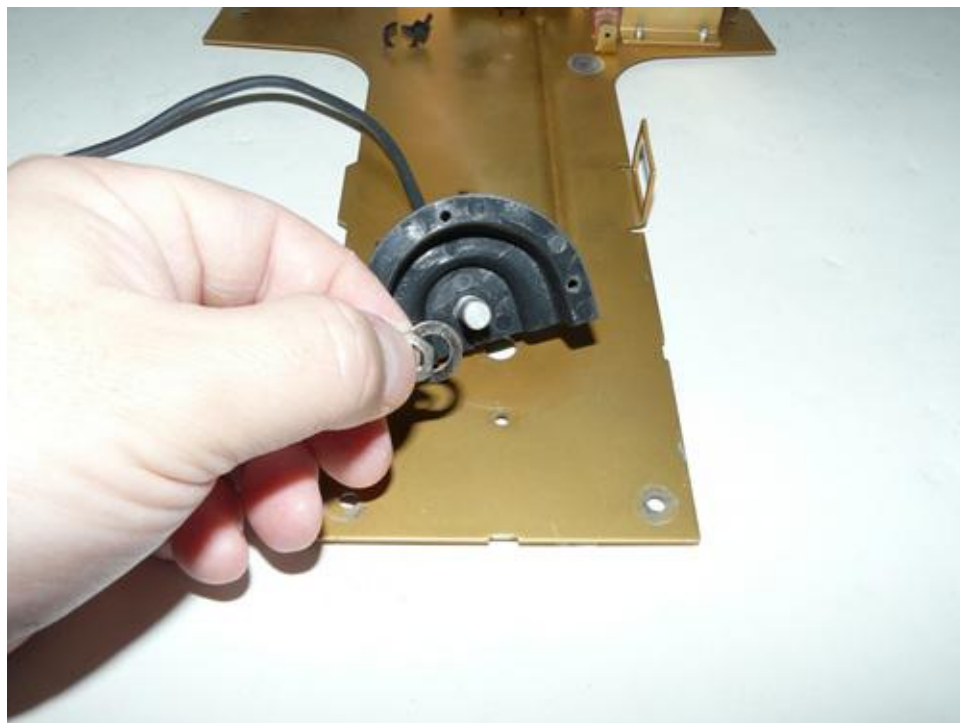


Remove the adjustment knob. Keep the knob to install on the replacement adjustment potentiometer.

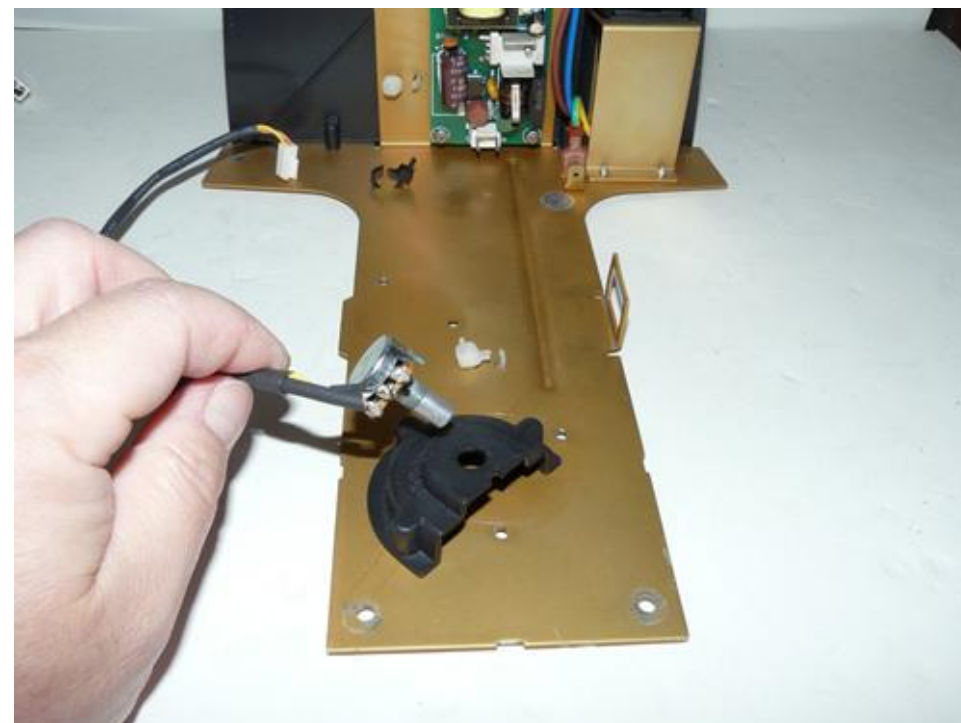


Loosen the nut using a 10mm wrench or socket. Unscrew to remove the old potentiometer.

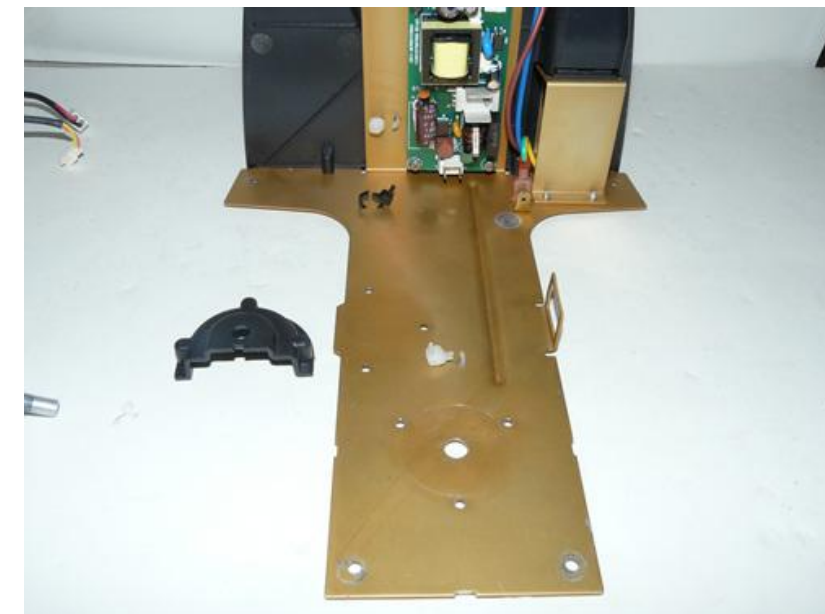
A



Remove the nut and washer.



Remove the old potentiometer.



*Note: OEM lamp, socket and original electrical wirings are now obsolete and can be completely removed. The reason those wirings were kept in the photos is that the microscope is rented unit.

Han-Seung Yang	12/16/2022
PN 12244 Leica DM500 Illuminator System Installation Instruction	REV 1
SHEET 4 OF 8	

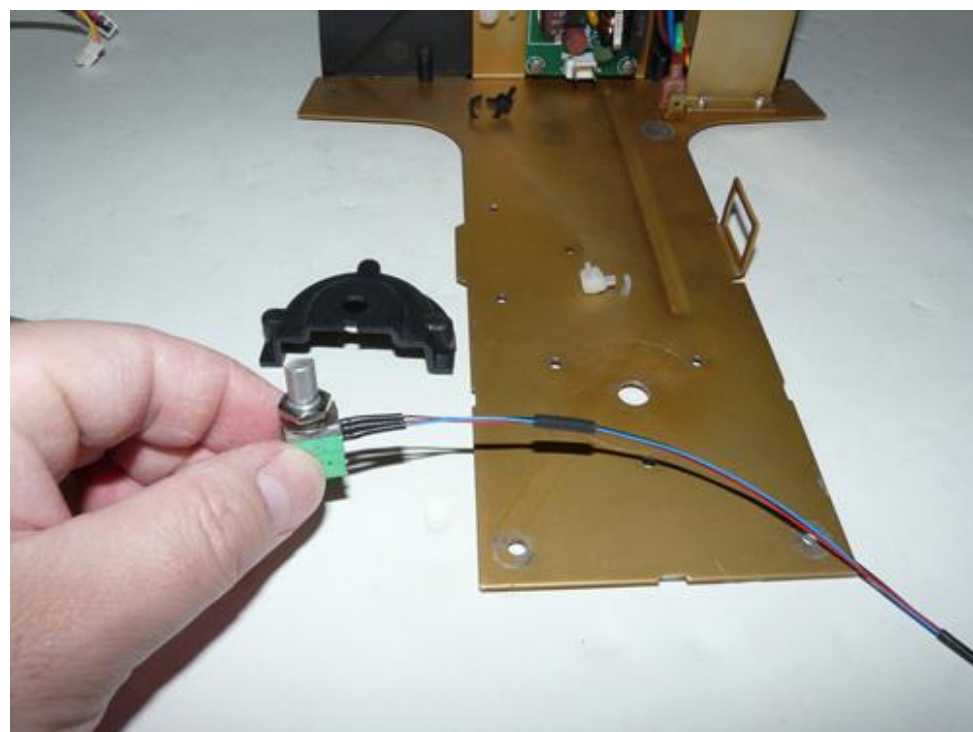
4

3

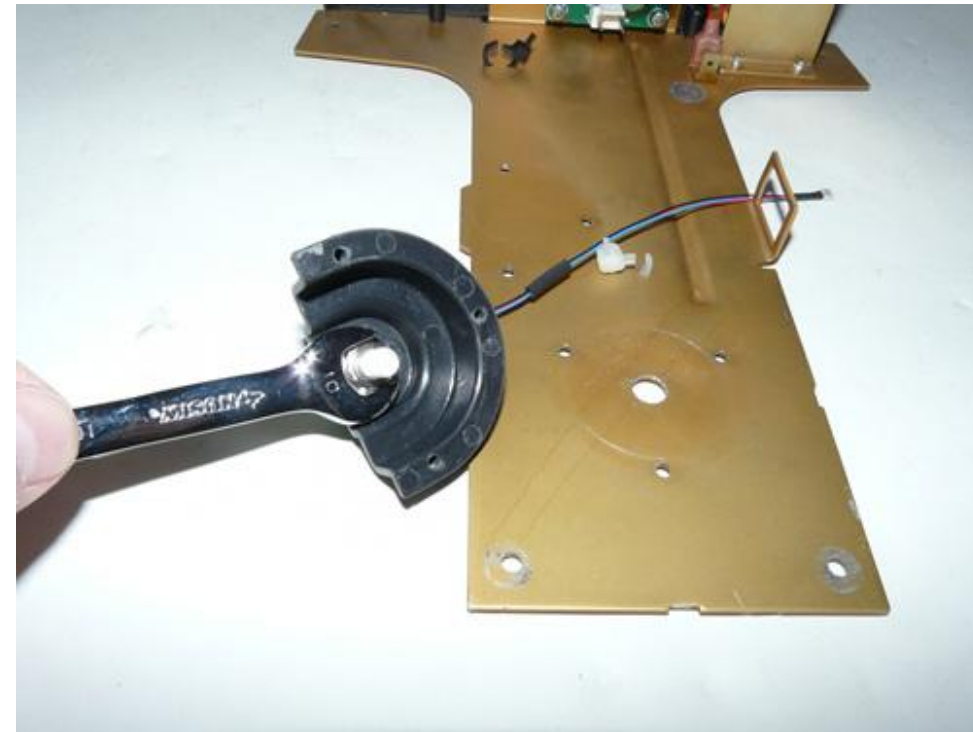
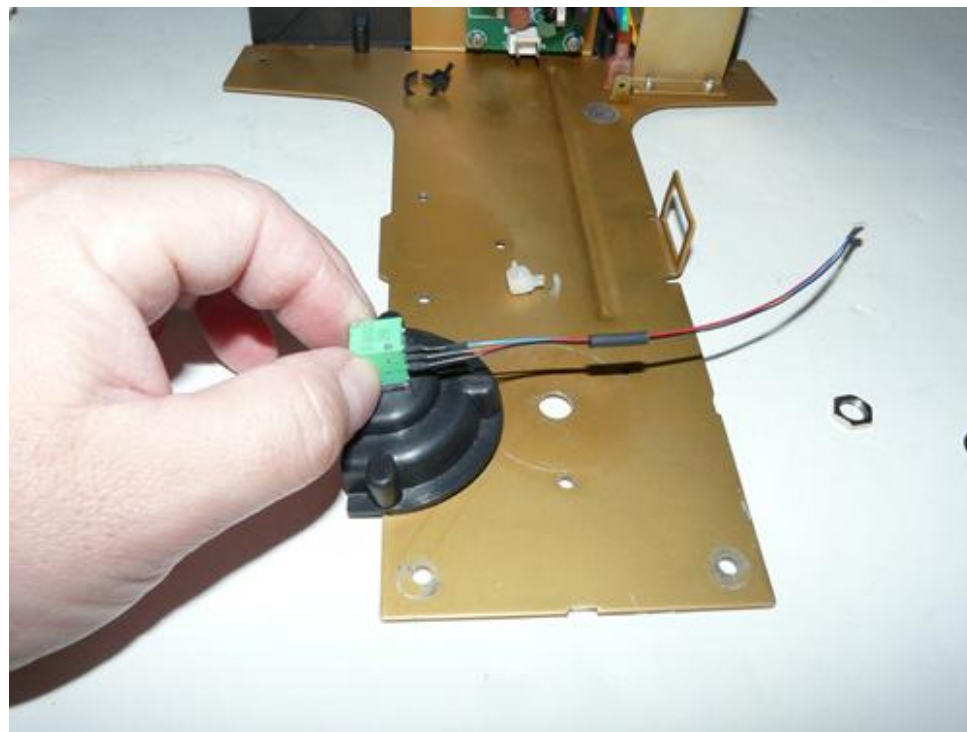
2

1

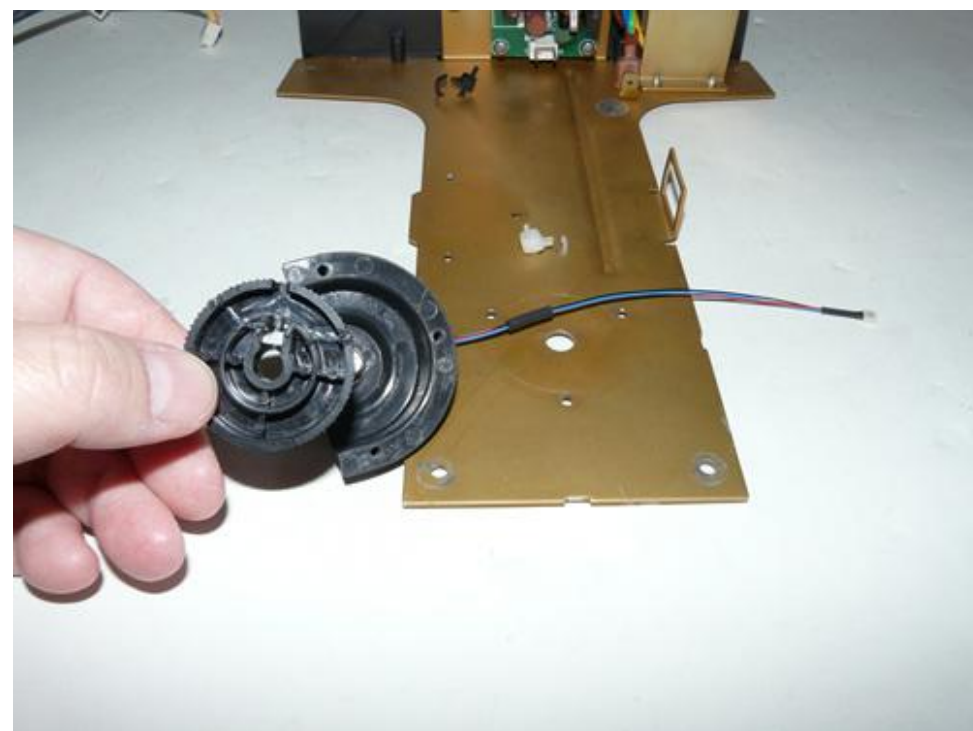
Nanodyne Replacement Illuminator for Leica DM500/750 Microscope Installation Instructions: Step 4. Install new potentiometer.



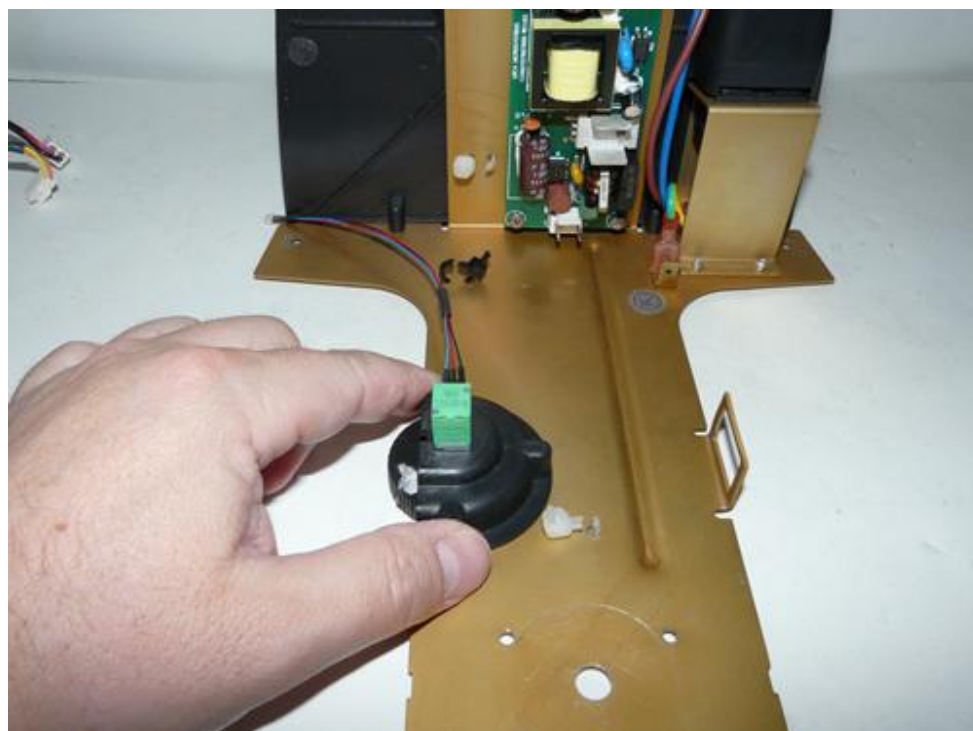
Secure the new potentiometer to the black plastic housing.



Use a 10mm socket or wrench to tighten it.



Re-install the original knob.



Re-install the potentiometer mounting bracket using original screws.



Han-Seung Yang	12/16/2022
PN 12244 Leica DM500 Illuminator System Installation Instruction	REV 1
SHEET 5 OF 8	

4

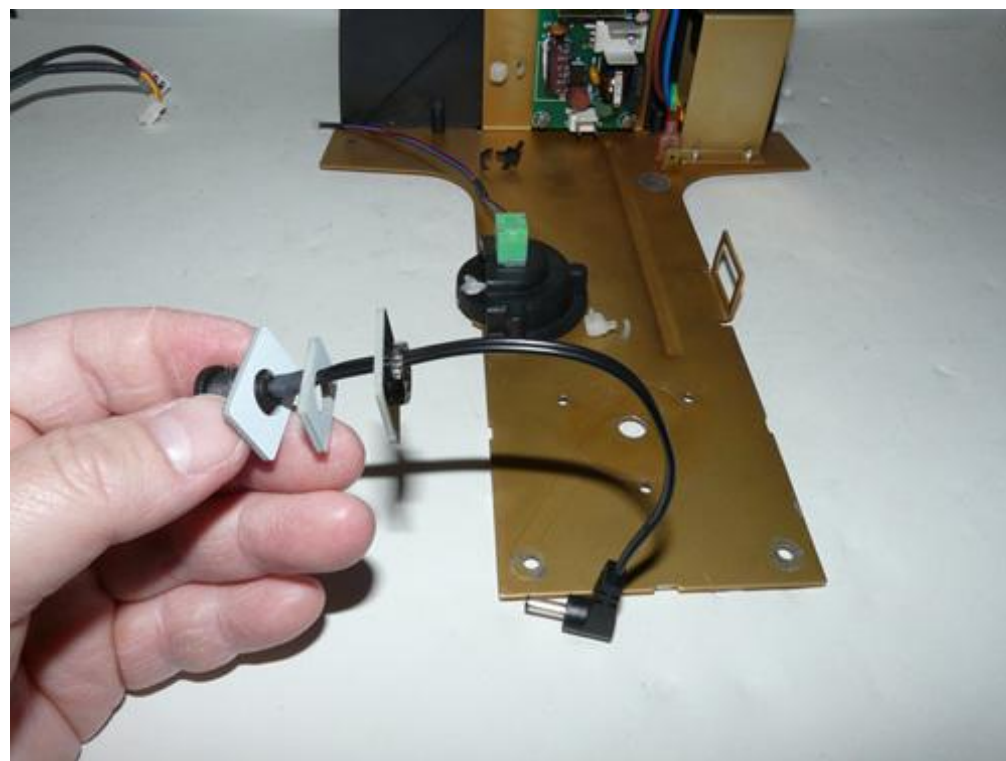
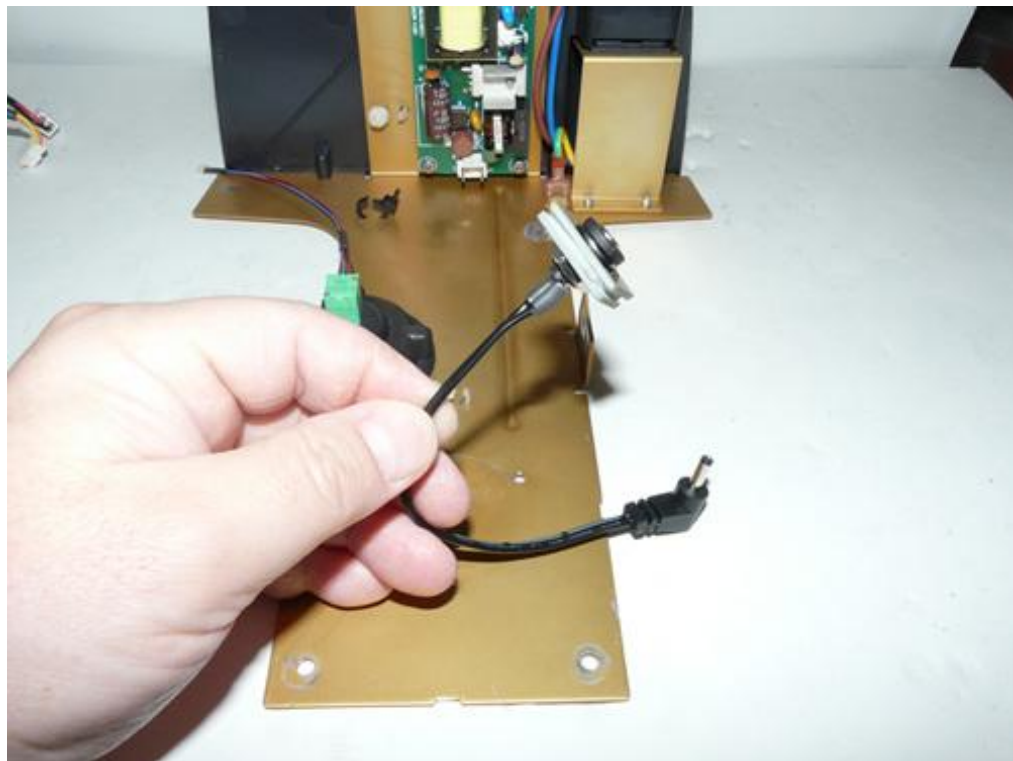
3

2

1

Nanodyne Replacement Illuminator for Leica DM500/750 Microscope Installation Instructions: Step 5. Install power plate.

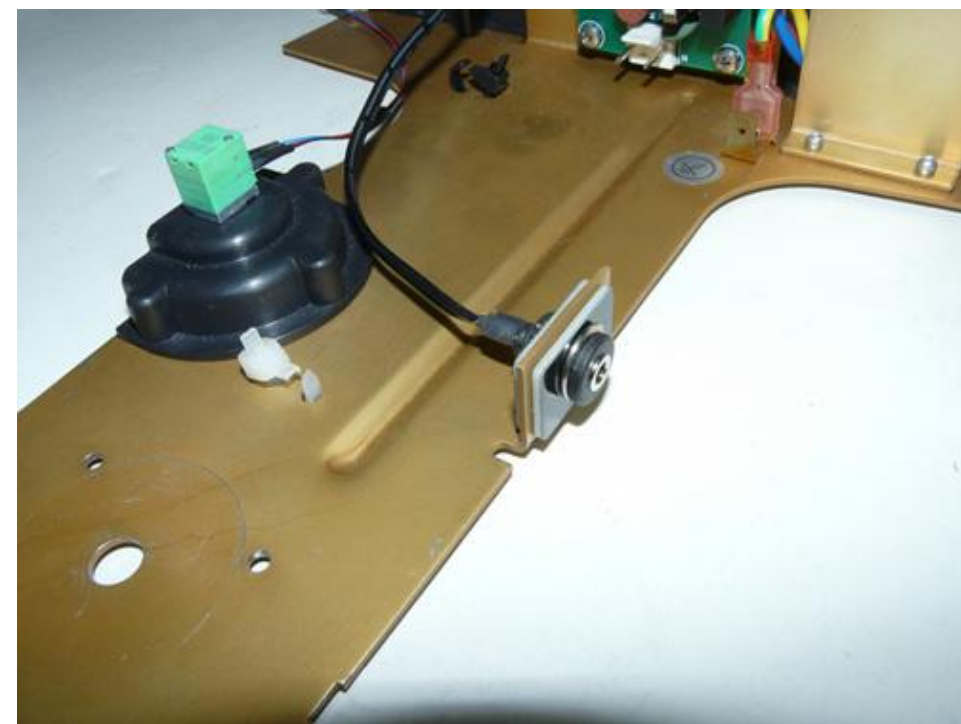
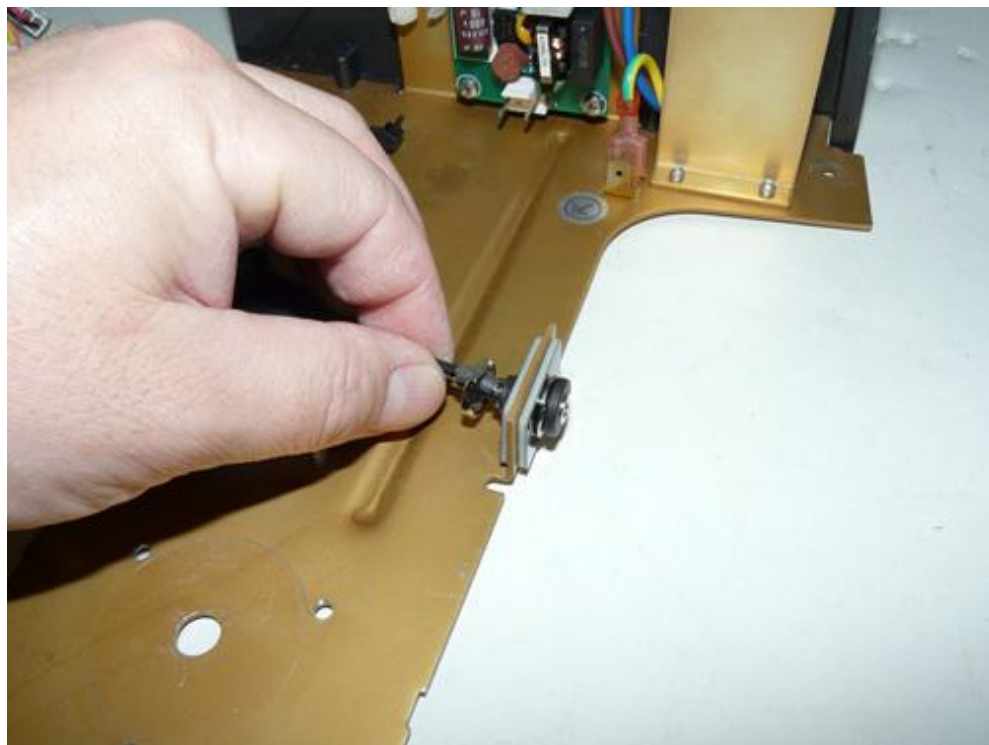
B



B

Guide the power jack and power plate outside piece through the old AC power switch hole as shown above and place the middle piece.

A



A

Line up the power plate (on the inside), and another plate (on the outside) with the AC power switch hole on the microscope frame. Then thread the nut onto the power jack and tighten it by hand. Verify that both plates are properly aligned with the nut finger tight. Then finish tightening with a 11mm wrench, just enough to secure them. Don't over-do it.

Han-Seung Yang	12/16/2022
PN 12244 Leica DM500 Illuminator System Installation Instruction	REV 1
SHEET 6 OF 8	

4

3

2

1

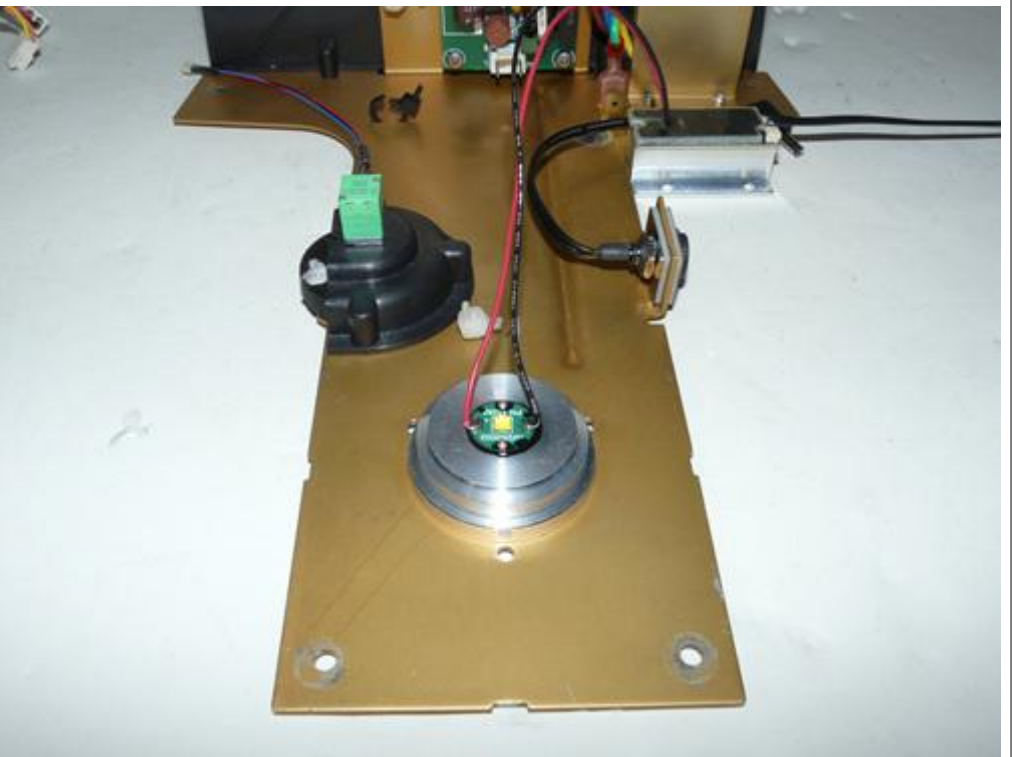
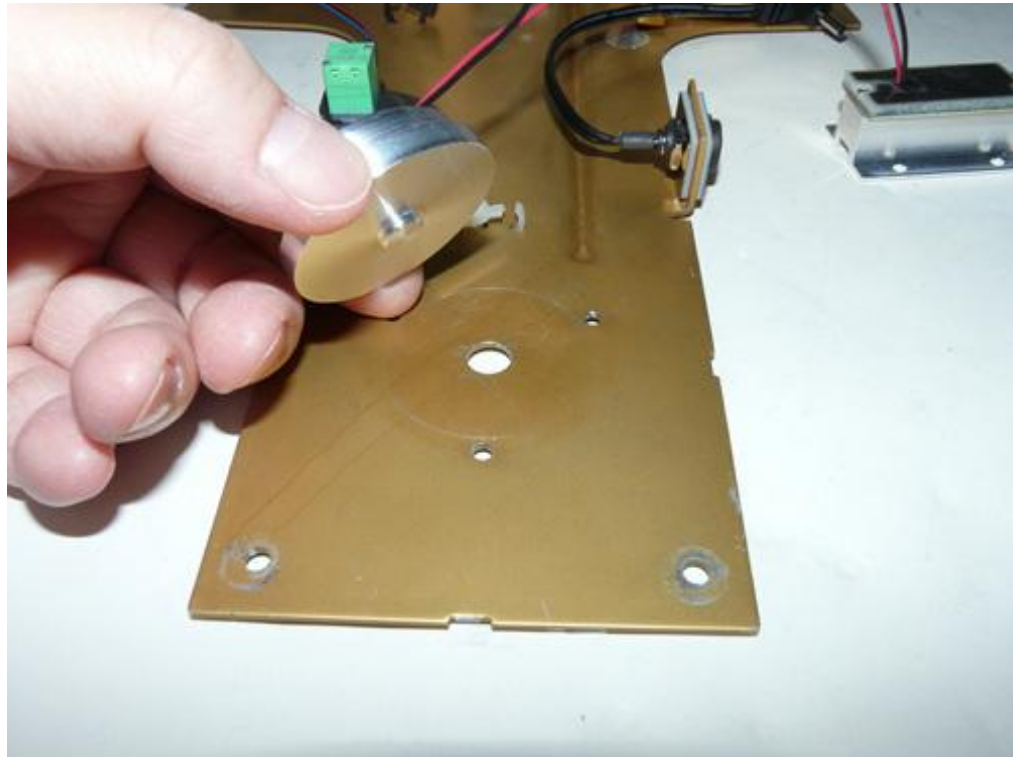
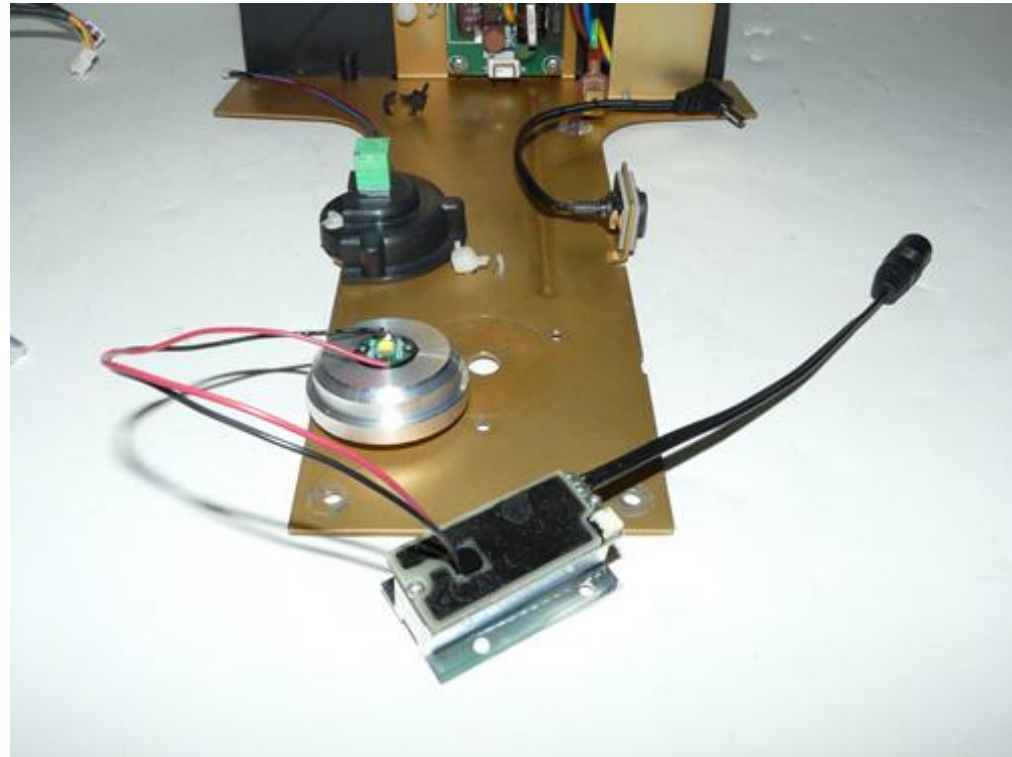
4

3

2

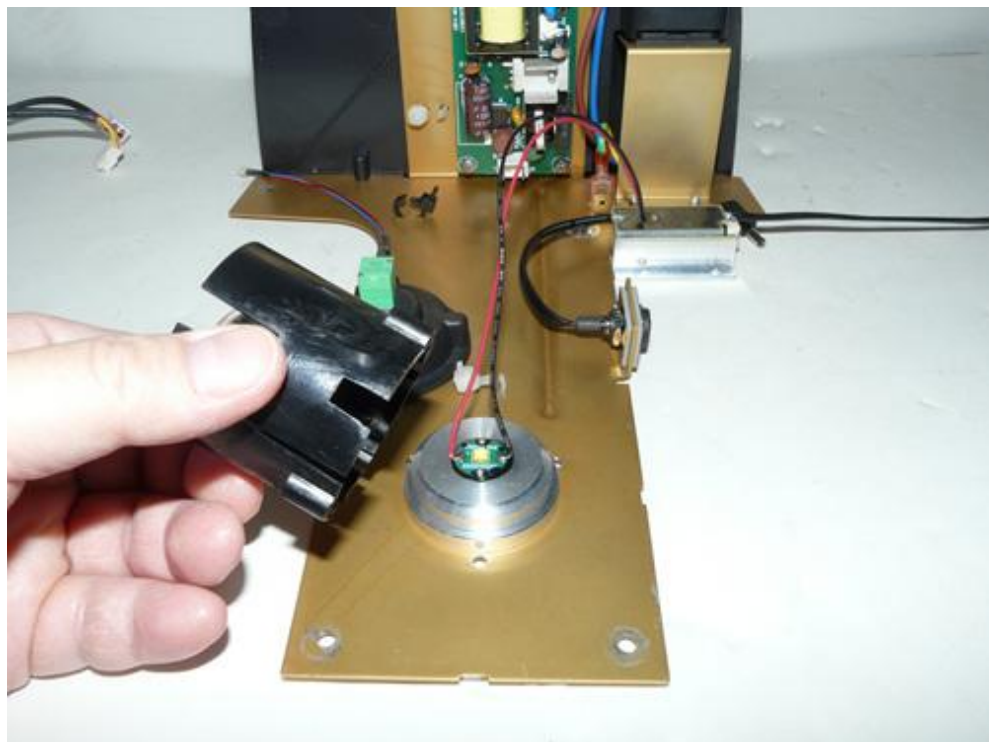
1

Nanodyne Replacement Illuminator for Leica DM500/750 Microscope Installation Instructions: Step 6. Mount Nanodyne illuminator assembly.



Install the Nanodyne illuminator assembly. Insert Nanodyne LED holder to the original hole for OEM LED.

Note the direction of the wires.



Re-install the original condensor lens assembly on the Nanodyne LED holder using original screws.

Han-Seung Yang	12/16/2022
PN 12244 Leica DM500 Illuminator System Installation Instruction	REV 1
SHEET 7 OF 8	

4

3

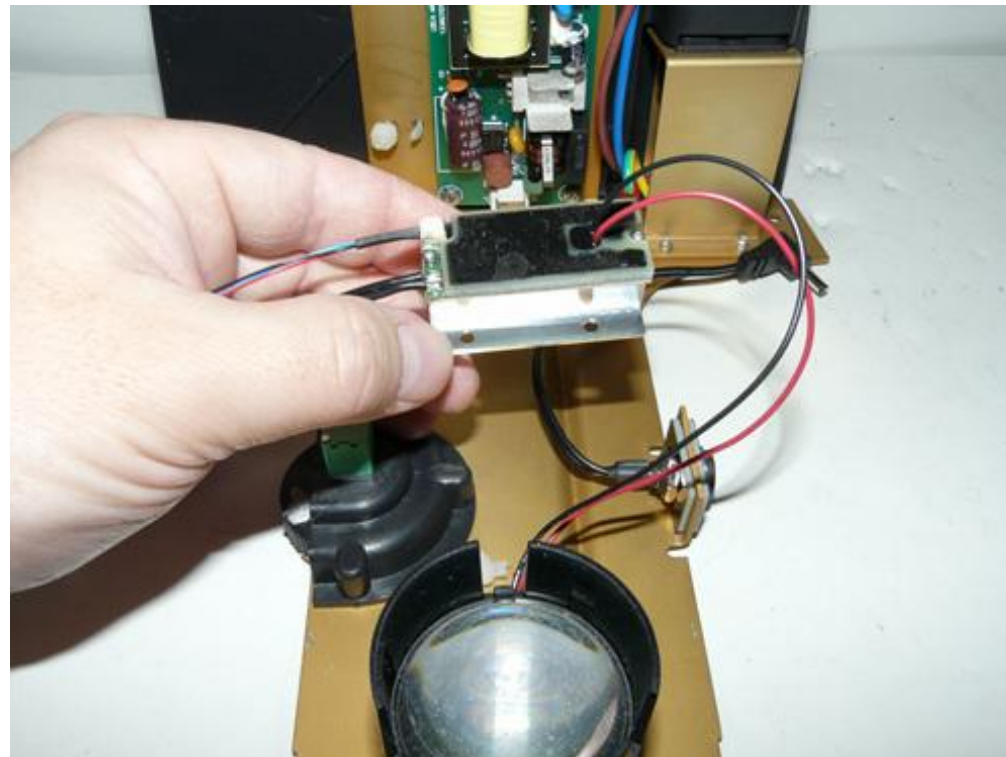
2

1

Nanodyne Replacement Illuminator for Leica DM500/750 Microscope Installation Instructions: Step 7. Connect pot cable and organize wires.



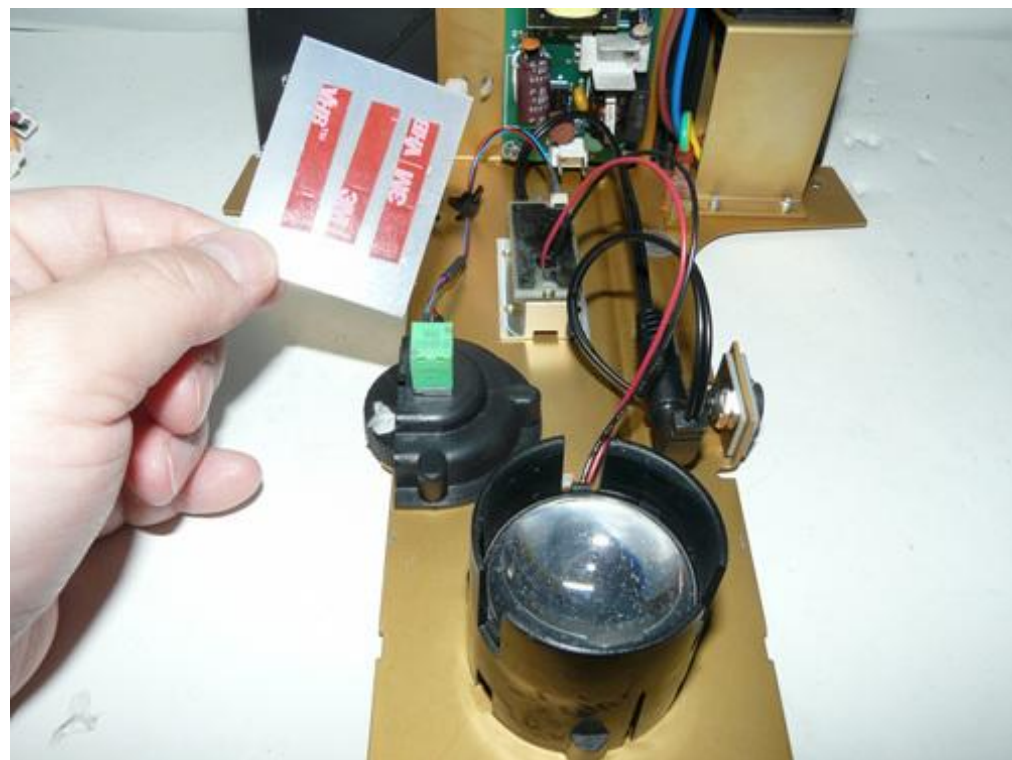
Connect a new pot cable to the Nanodyne illuminator assembly.



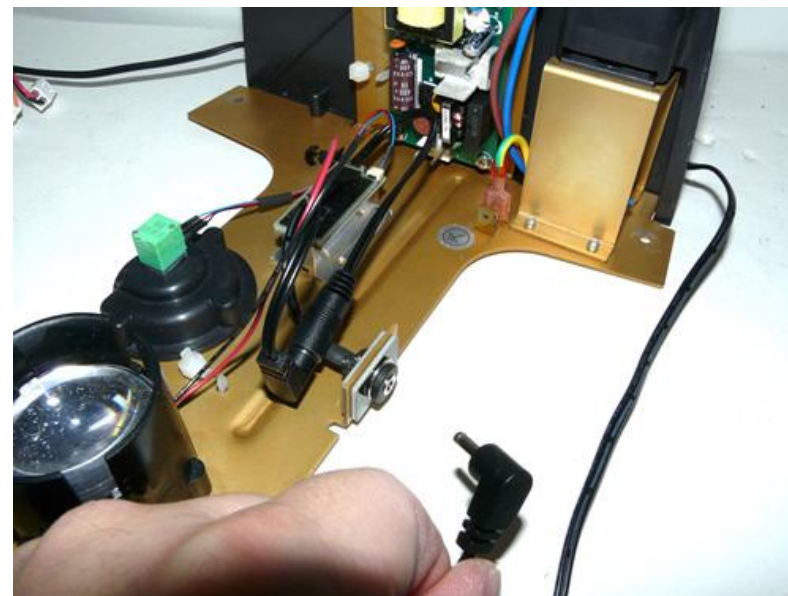
Fully insert the connector until hearing a little click sound. Fully inserting the connector to engage the electrical contacts needs more force than the wires can support. Use your fingernail, or a tiny screwdriver or tweezers. ***Note: Pot connector is keyed to go in one way. If it doesn't fit, do not force it but just flip 180 degree.**



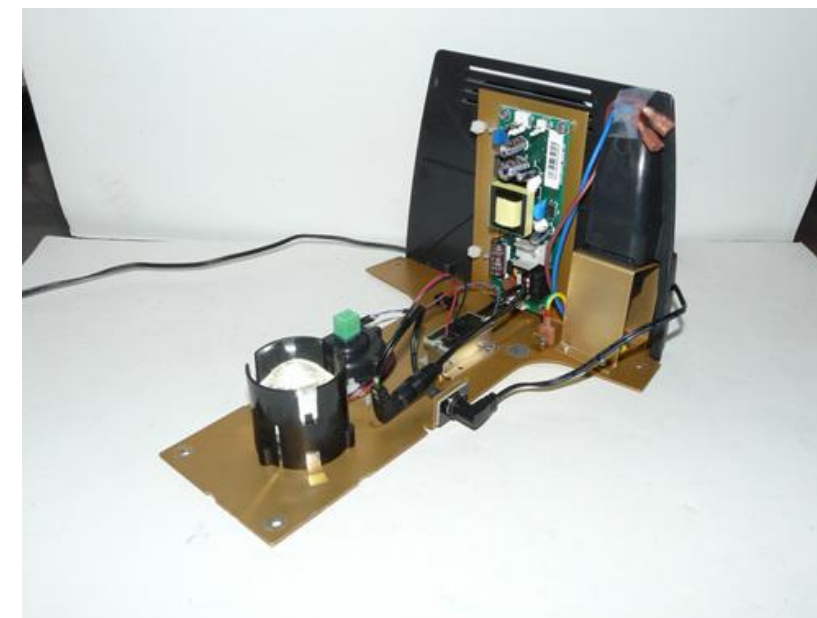
Organize pot cable and wires, fix PCB assembly using 3M VHB tapes provided.



Use 3M VHB tapes provided if needed.



Place upper frame (not shown) and connect power supply.



Nanodyne illuminator installed, ready to use.

Han-Seung Yang	12/16/2022
PN 12244 Leica DM500 Illuminator System Installation Instruction	REV 1
SHEET 8 OF 8	