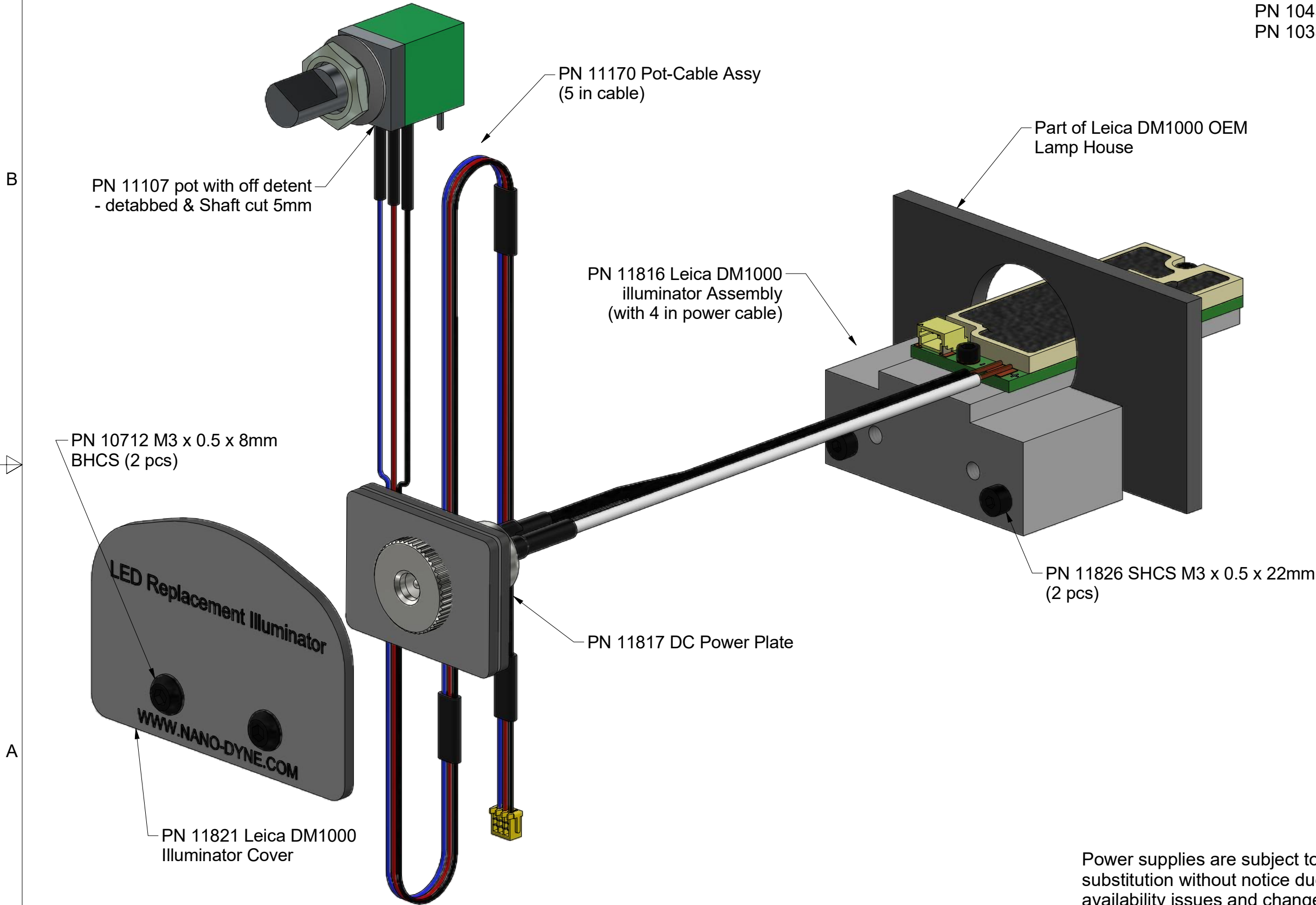


Nanodyne Replacement Illuminator for Leica DM1000 Microscope Installation Instructions: Included Items

Additional Items Included But Not Shown:

PN 10457 Hex Key 2.5mm Short Arm for M3 SHCS
PN 10337 Hex Key 2mm Short Arm for M3 BHCS



PN 10736 Rubber plug to block unused AC power receptacle.



PN 10733 Power Supply - XP Power 5V 1A and PN 10734 Cable Assy 1.35mm ID x 3.5mm OD RA plug to USB A, 6 foot.

The illuminator may be powered by plugging the cable into the power supply provided, or into a suitable USB port on a computer or other device.



Tape to secure wires.

Power supplies are subject to substitution without notice due to availability issues and changes in regulations.

Han-Seung Yang		11/23/2020	
PN 11819 Leica DM1000 Illuminator System Installation Instruction		REV 1	
SHEET 1		OF 11	

Nanodyne Replacement Illuminator for Leica DM1000 Microscope Installation Instructions: Step 1. Remove OEM lamp and electrical wiring.

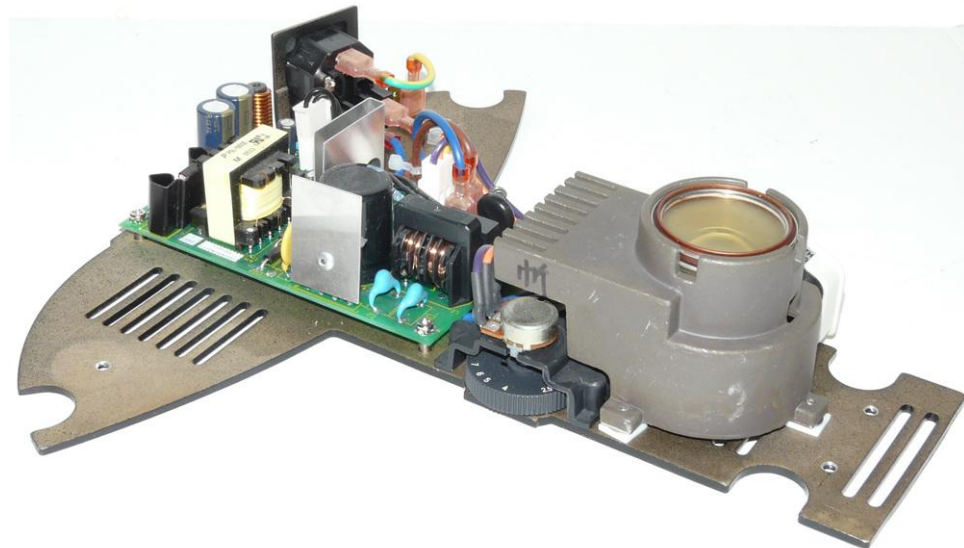


photo 1a

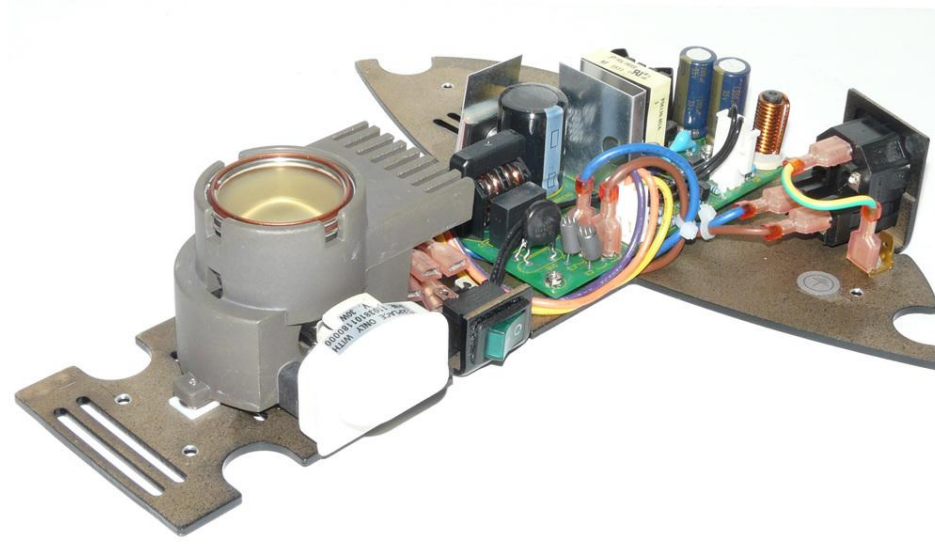


photo 1b



photo 1c

Remove the OEM lamp from the socket.



photo 1d

OEM lamp and socket are now obsolete and can be discarded.

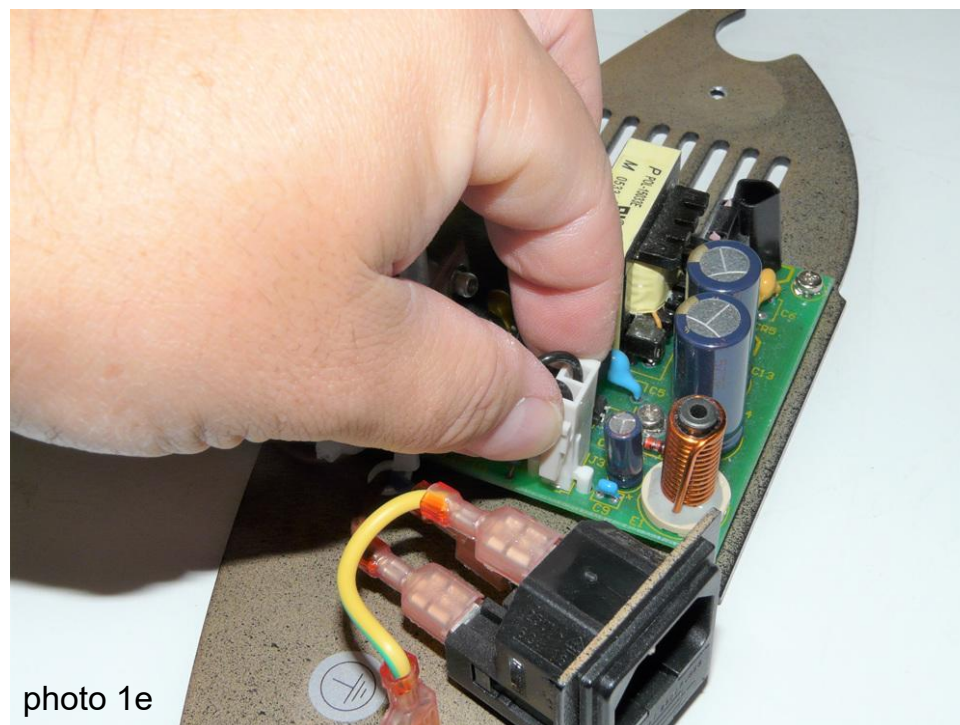


photo 1e

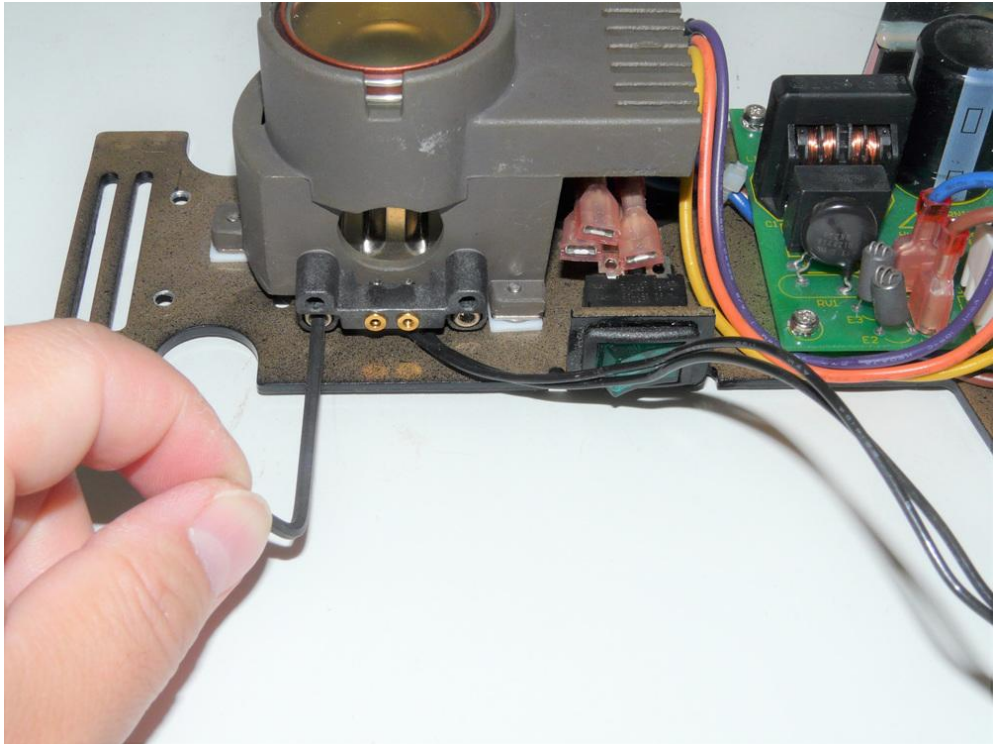
Disconnect the cable connected to the OEM illuminator socket.



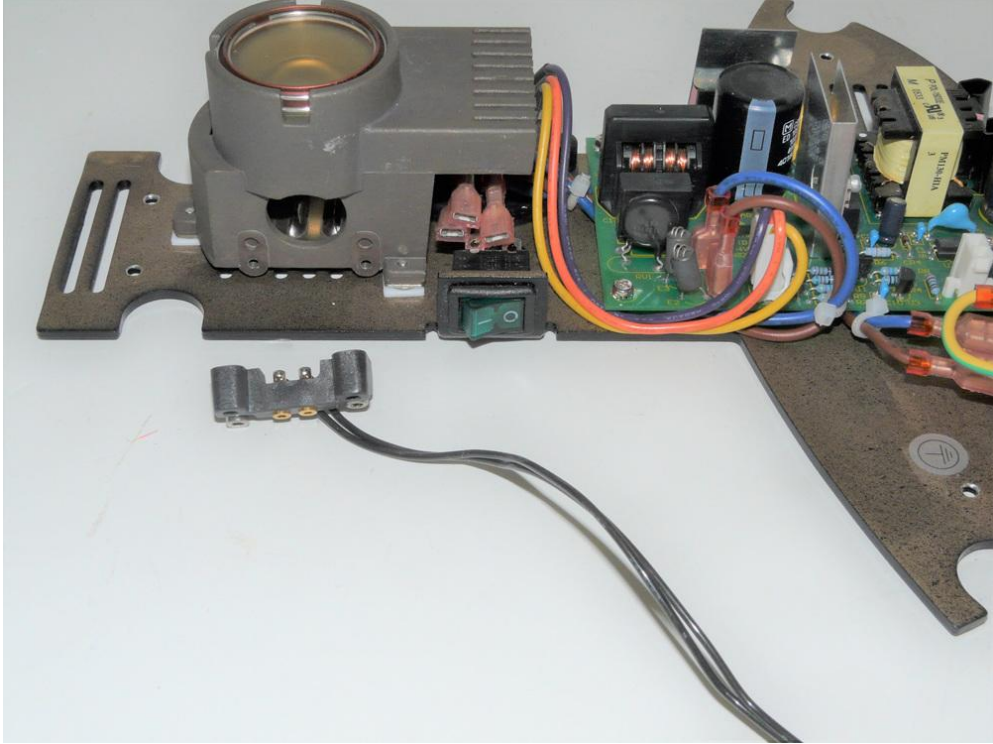
photo 1f

Han-Seung Yang		11/23/2020
PN 11819 Leica DM1000 Illuminator System Installation Instruction		REV 1
SHEET 2		OF 11

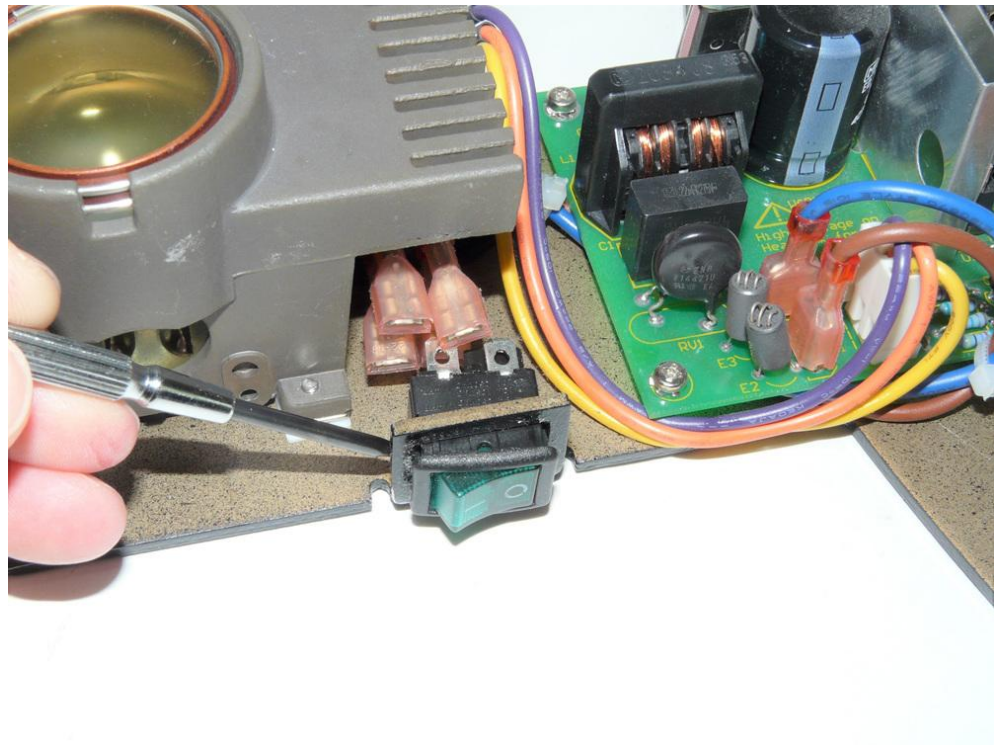
Nanodyne Replacement Illuminator for Leica DM1000 Microscope Installation Instructions: Step 2. Remove OEM lamp socket and electrical wiring.



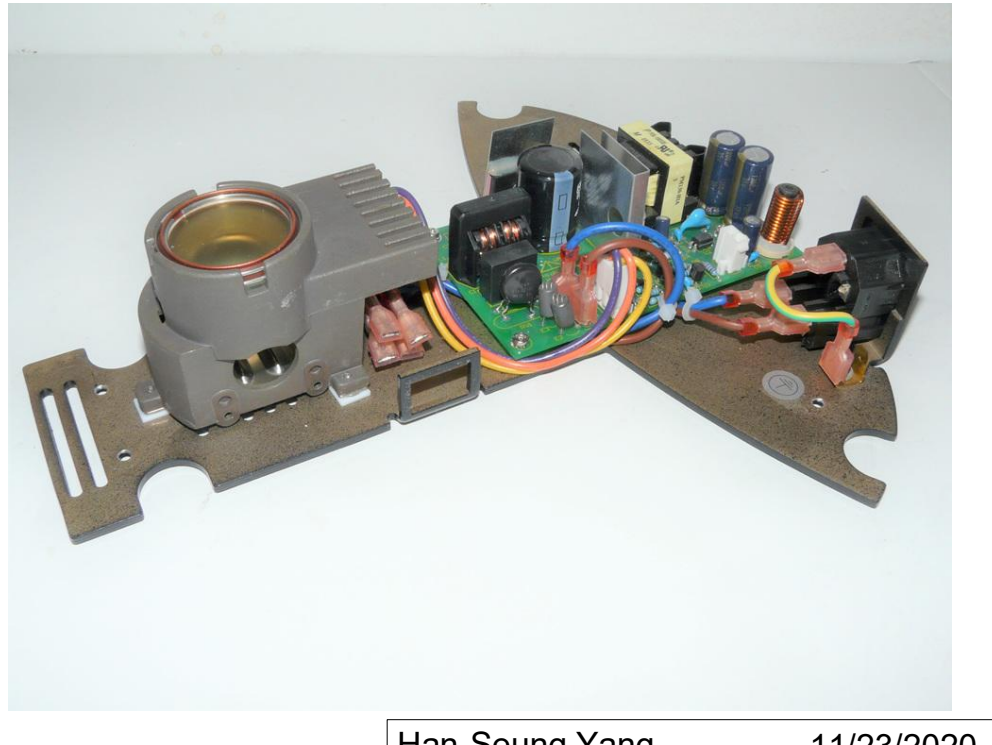
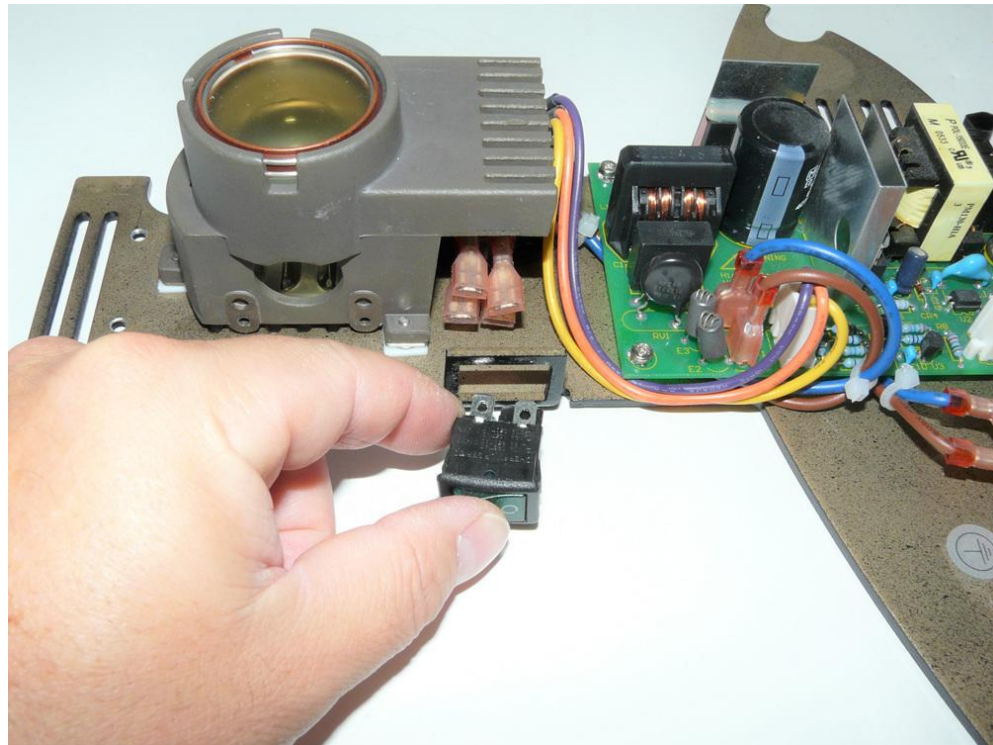
Unscrew and remove the OEM lamp socket as shown above.



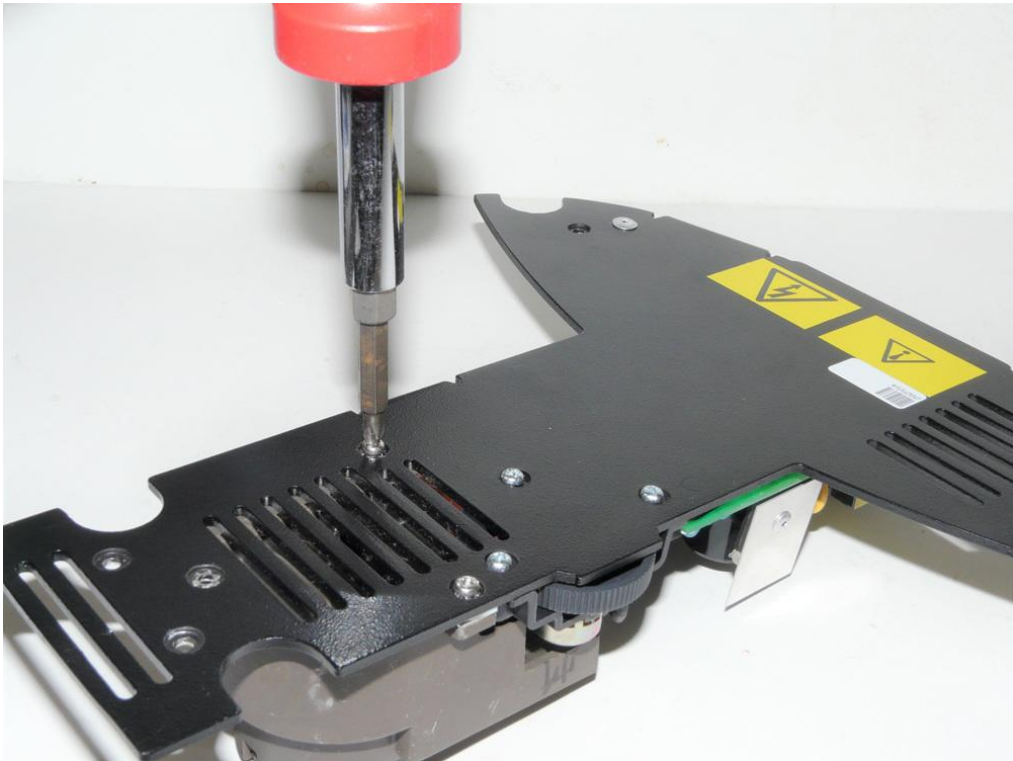
Unplug the electrical wiring from the AC switch.



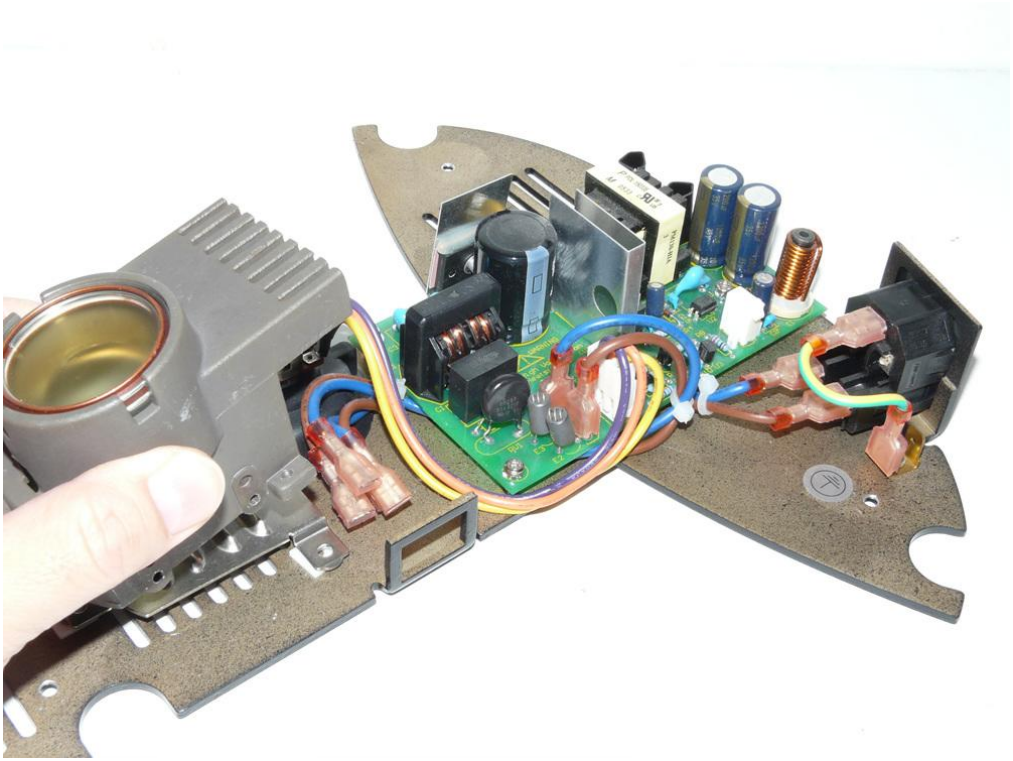
Depress the plastic clips on each side of the AC power switch and push it out.



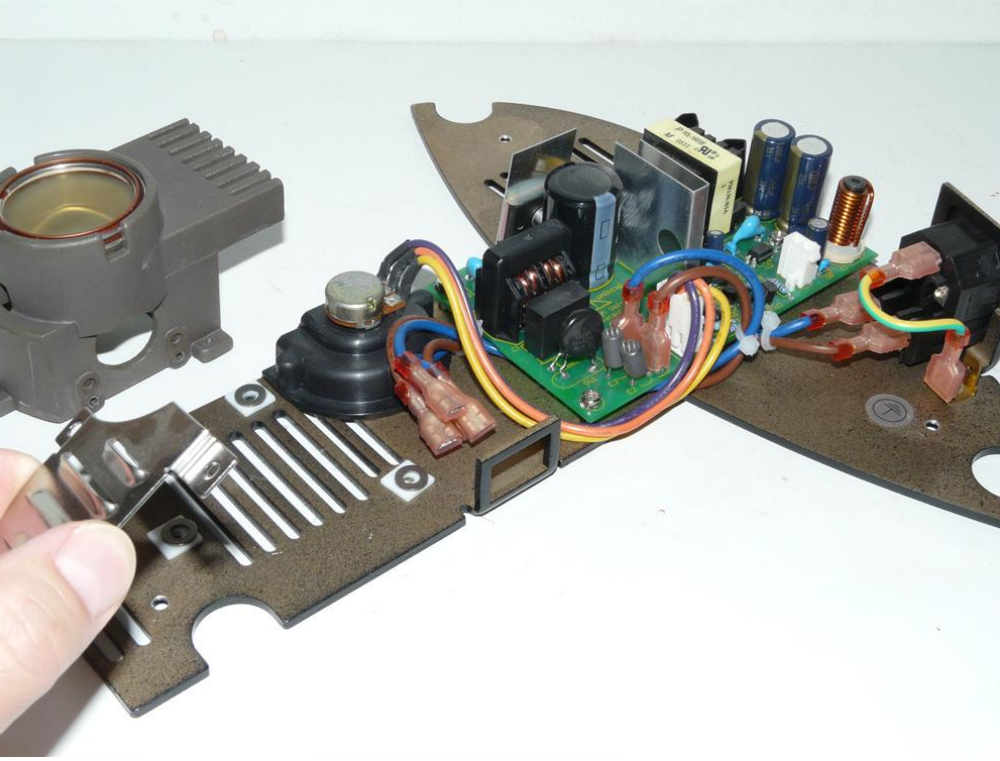
Nanodyne Replacement Illuminator for Leica DM1000 Microscope Installation Instructions: Step 3. Remove old lamp holder assembly (if desired, otherwise skip this step).



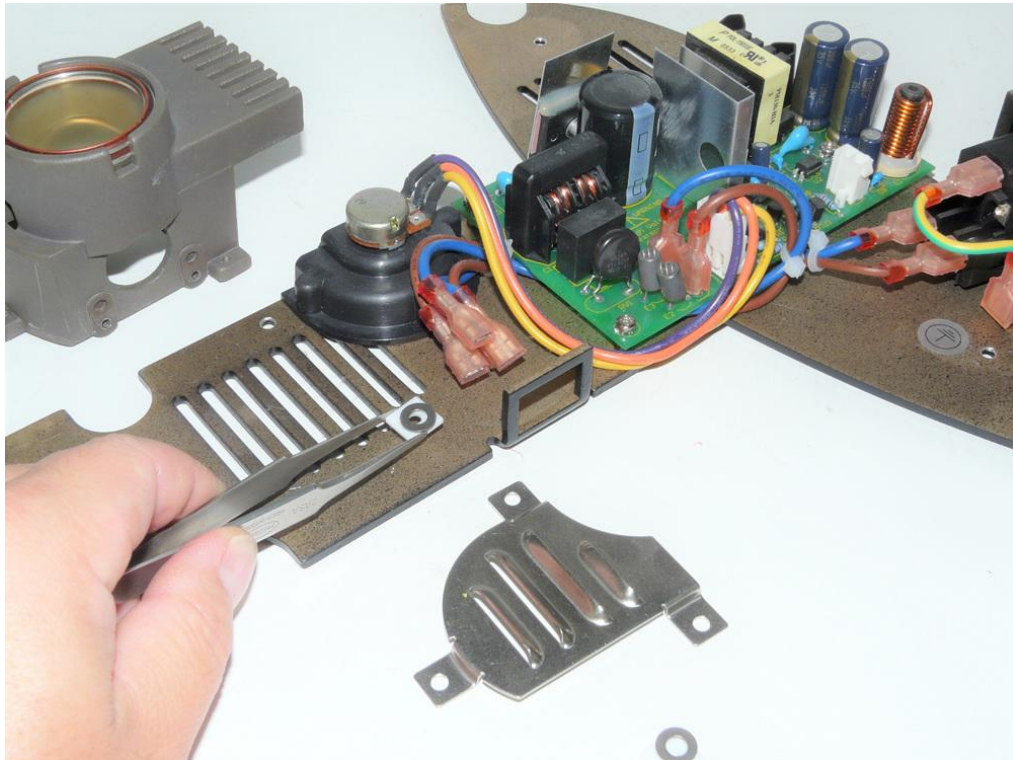
Note: For the clear view, we removed OEM lamp holder assembly while you do not need to do that.



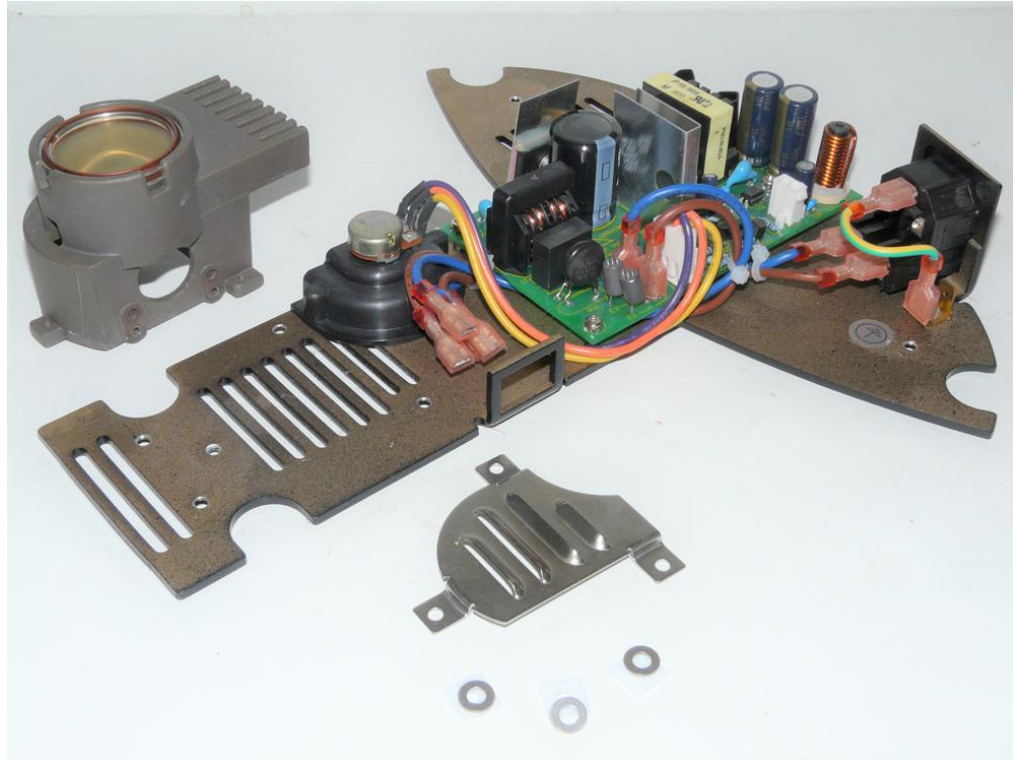
Unscrew and remove the OEM lamp holder assembly.



Remove the metal bracket.



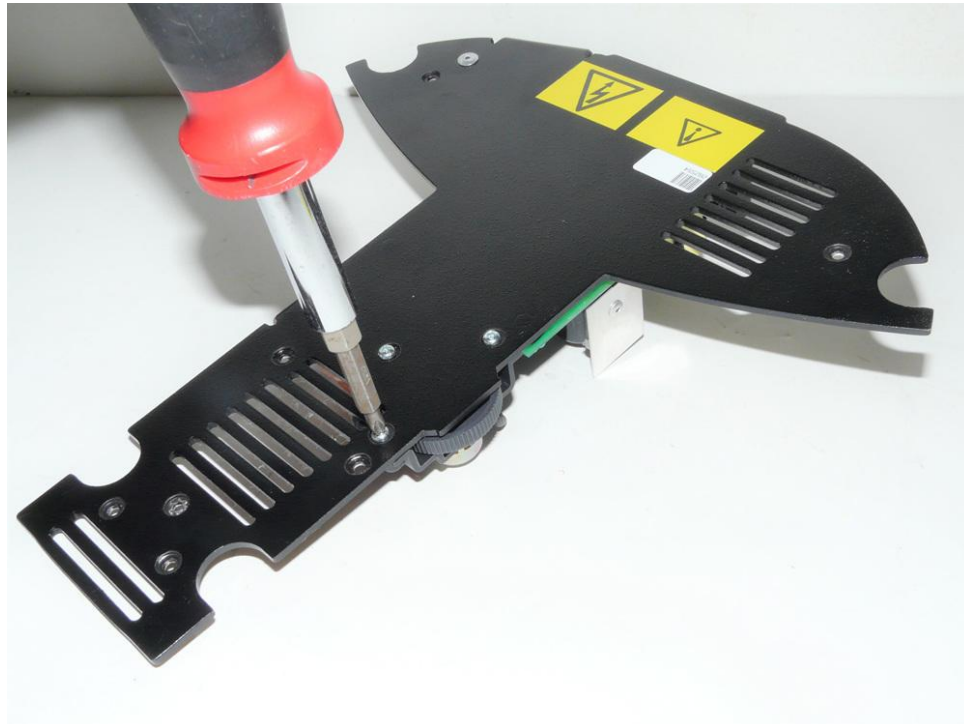
Remove the washers.



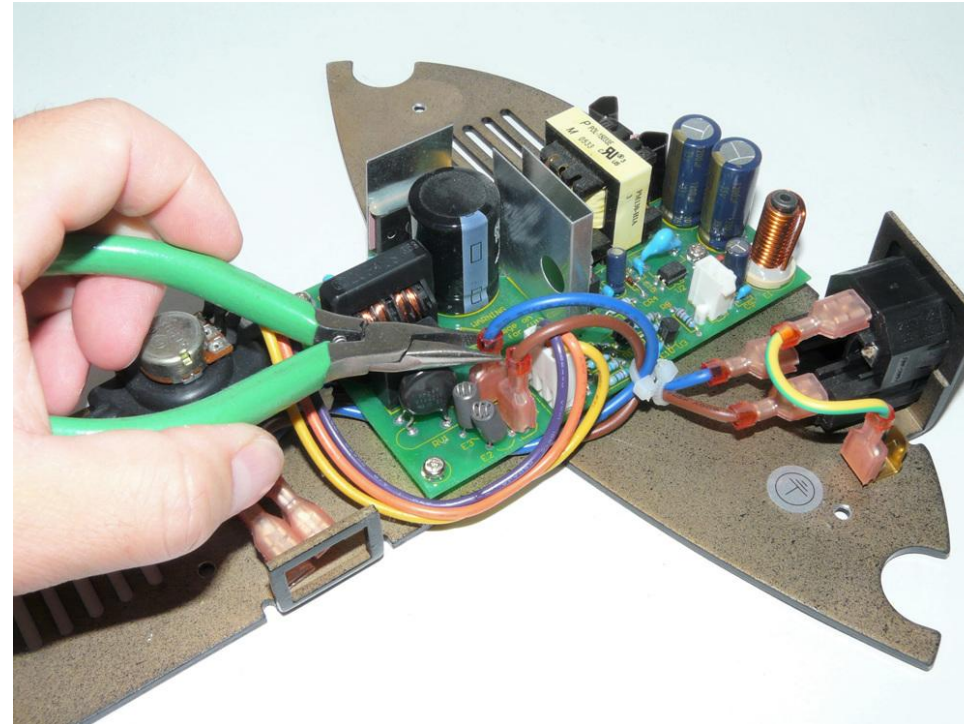
Keep the OEM lamp holder, metal bracket and washers for the later installation.



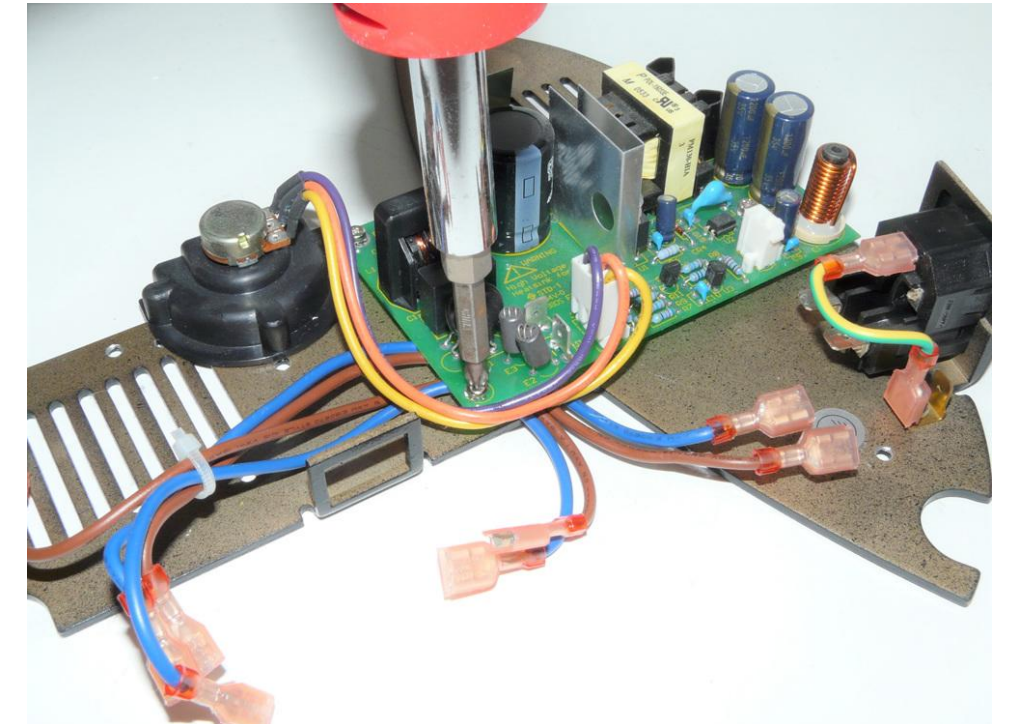
Nanodyne Replacement Illuminator for Leica DM1000 Microscope Installation Instructions: Step 4. Remove old potentiometer and electrical wiring.



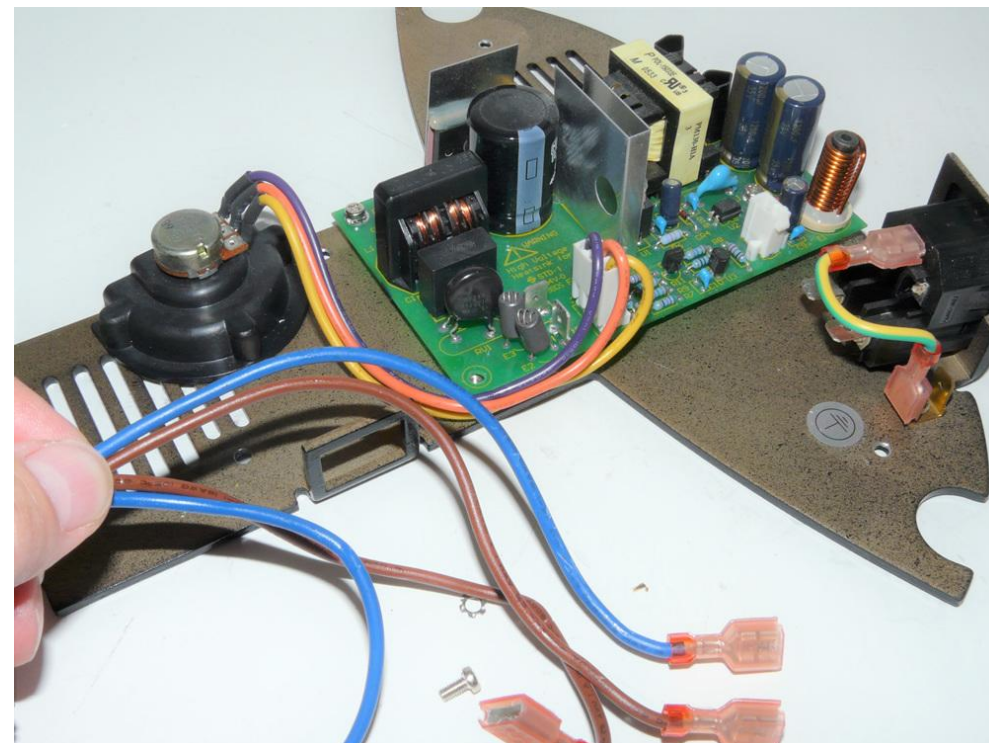
Unscrew to remove the old potentiometer. Keep the original screws for the later installation.



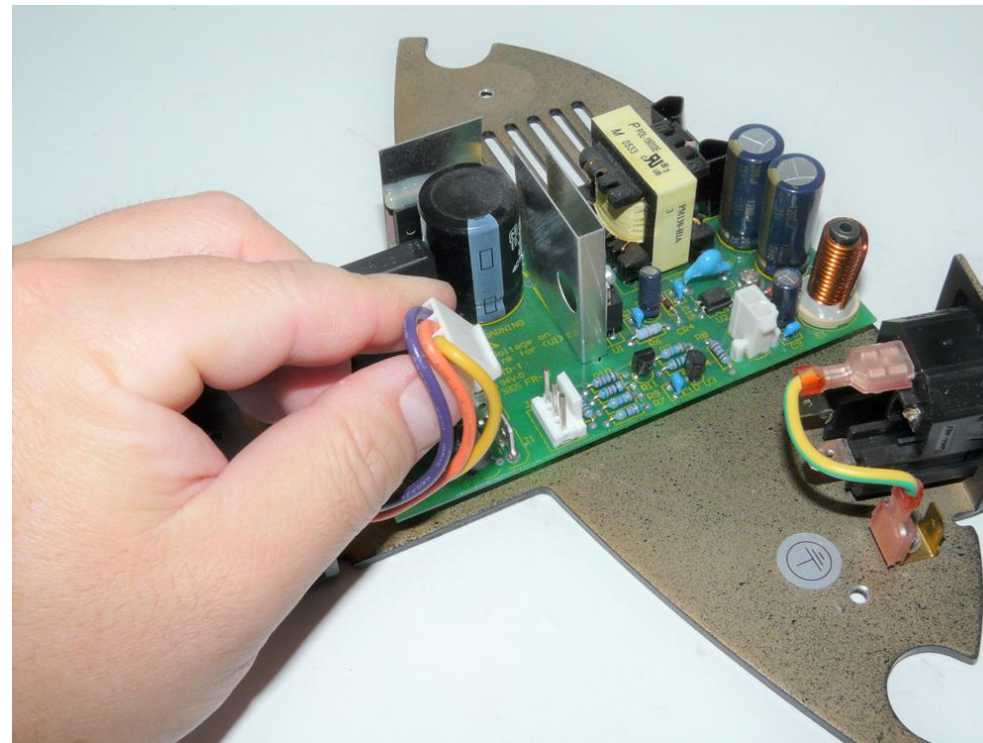
Disconnect the cables connected to the OEM illuminator circuit board, and remove unneeded electrical wiring.



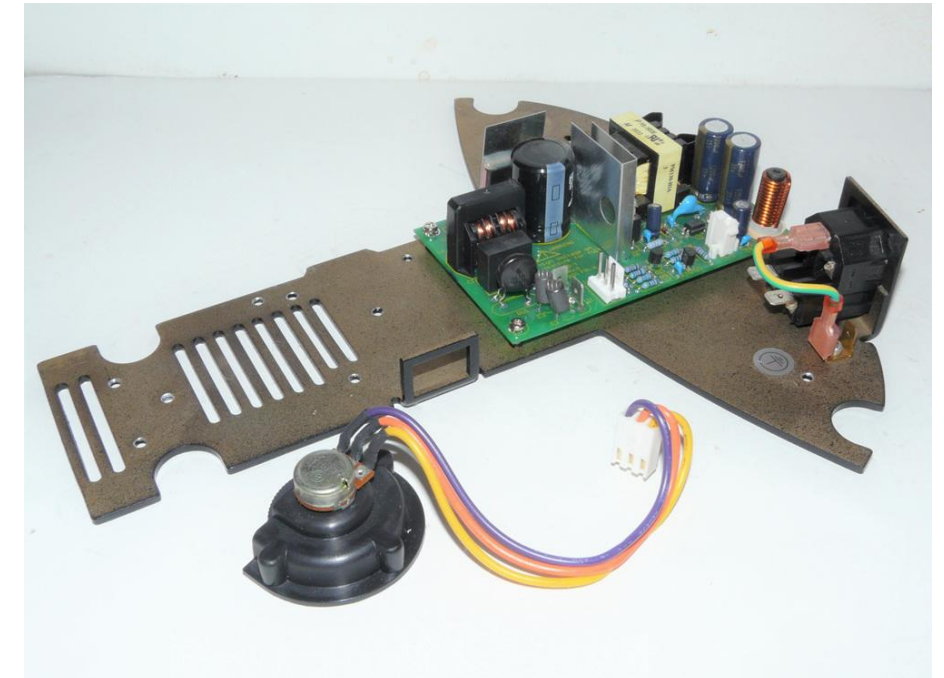
Remove the screw blocking unneeded electrical wiring.



Completely remove the unneeded electrical wiring.



Disconnect pot cable and remove the old potentiometer. Keep the black plastic bracket for the later installation.



Han-Seung Yang		11/23/2020	
PN 11819 Leica DM1000 Illuminator System Installation Instruction			REV 1
SHEET 5		OF	11

4 3 2 1

Nanodyne Replacement Illuminator for Leica DM1000 Microscope Installation Instructions: Step 5. Remove old potentiometer (continued) and install new potentiometer.

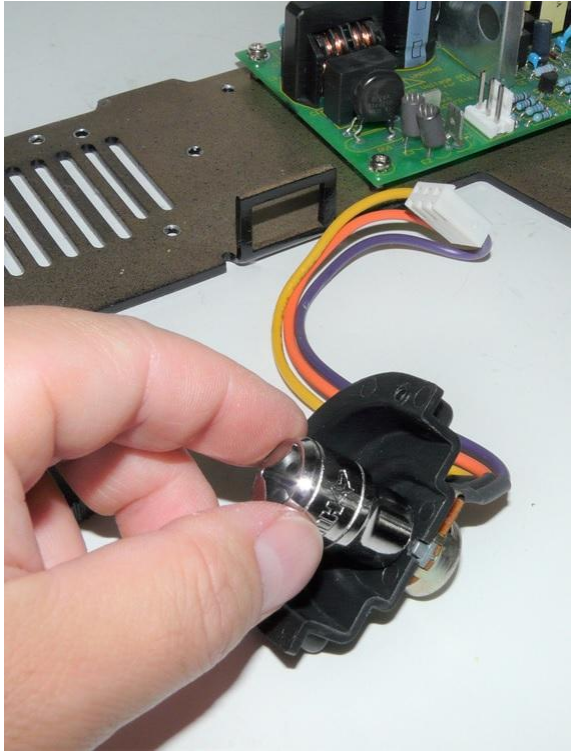
B



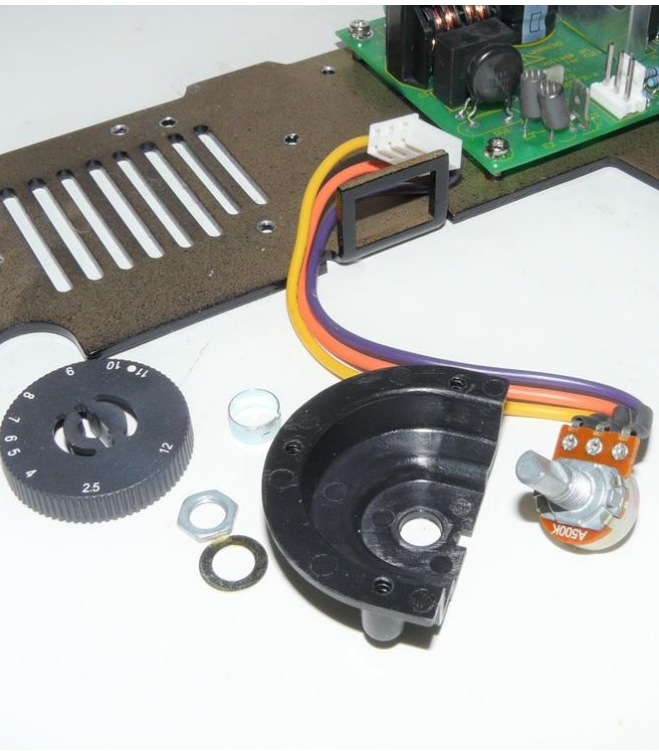
Remove round metal clip.



Remove the adjustment knob. Keep the knob to install on the replacement adjustment potentiometer.



Loosen the nut using a wrench or socket.

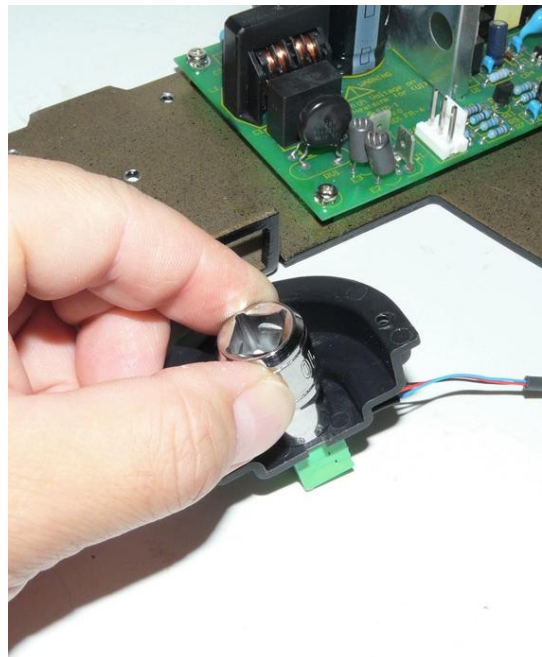


Completely remove the original potentiometer and pot cable.



Secure the new potentiometer to the mounting bracket.

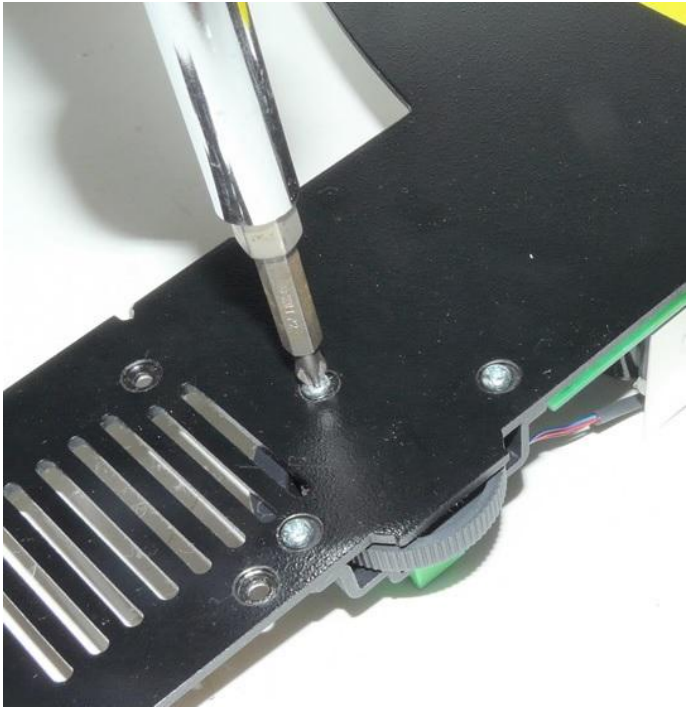
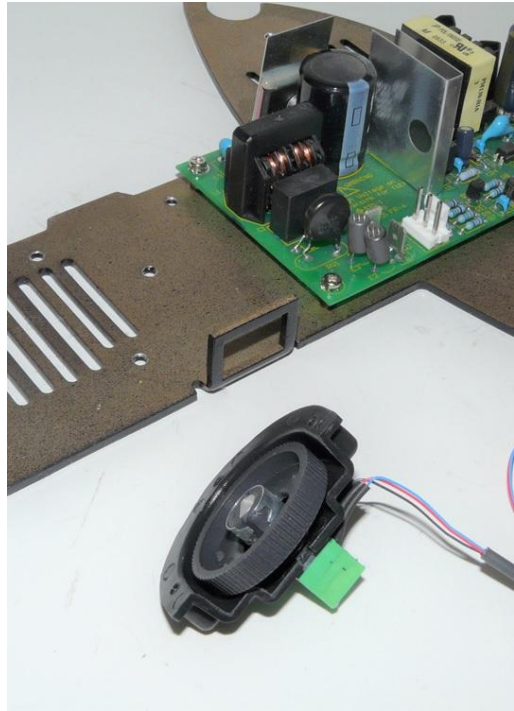
A



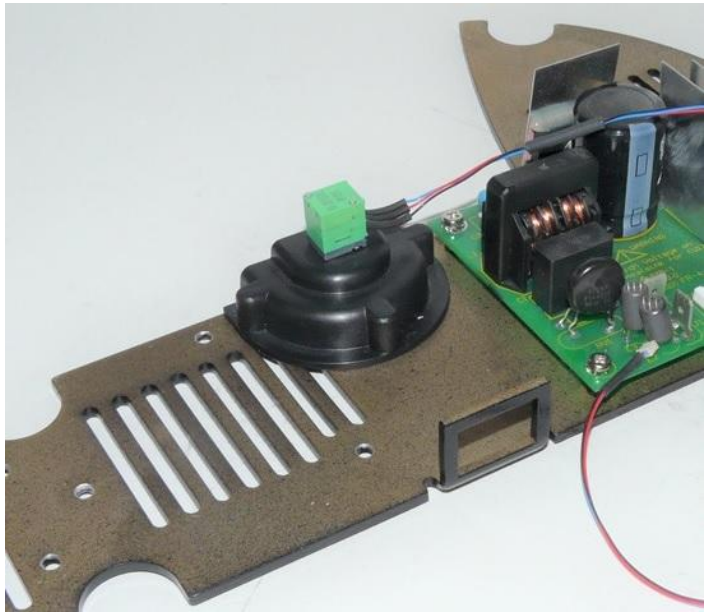
Use a 11mm socket or wrench to tighten it.



Re-install the original knob and round metal clip.



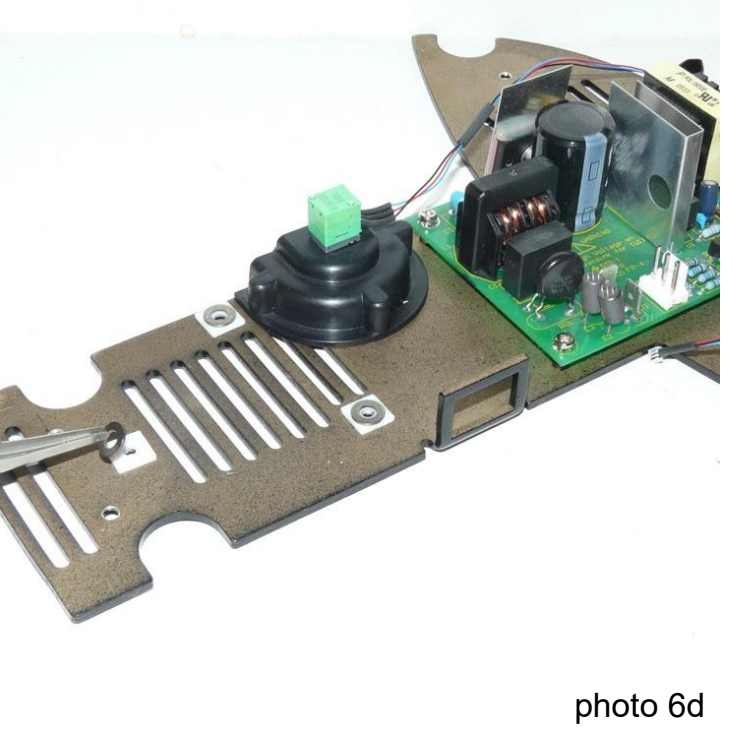
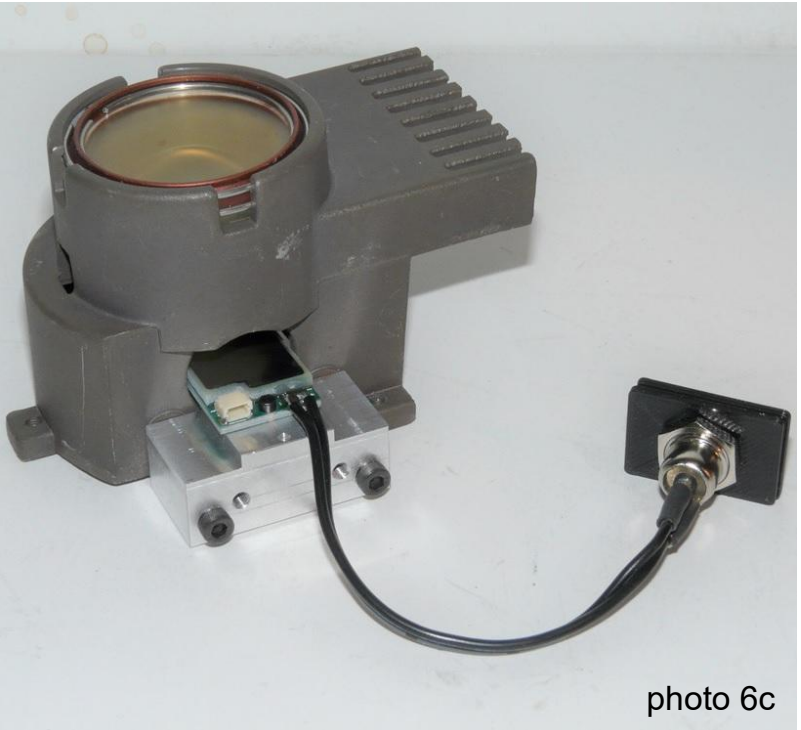
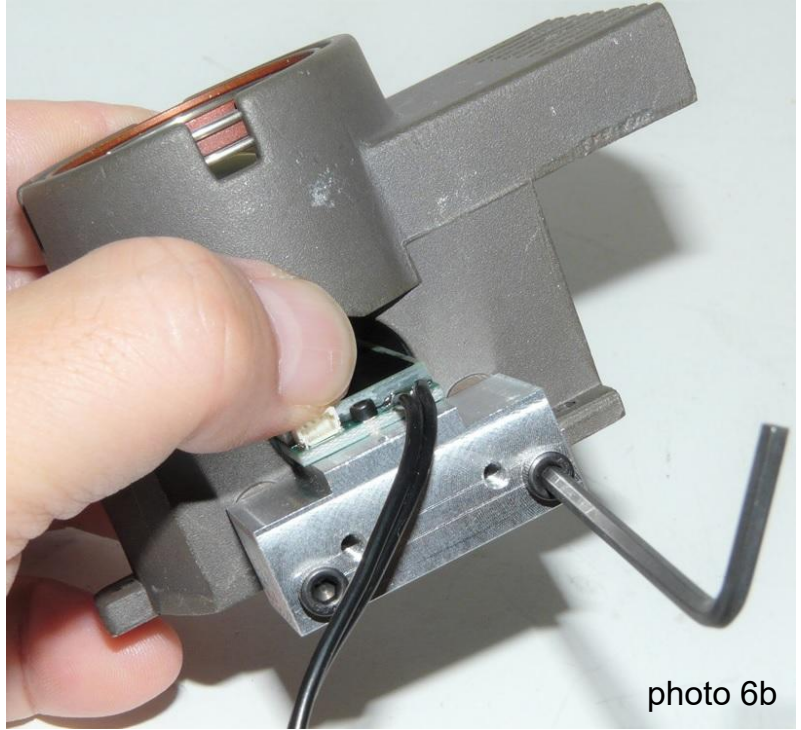
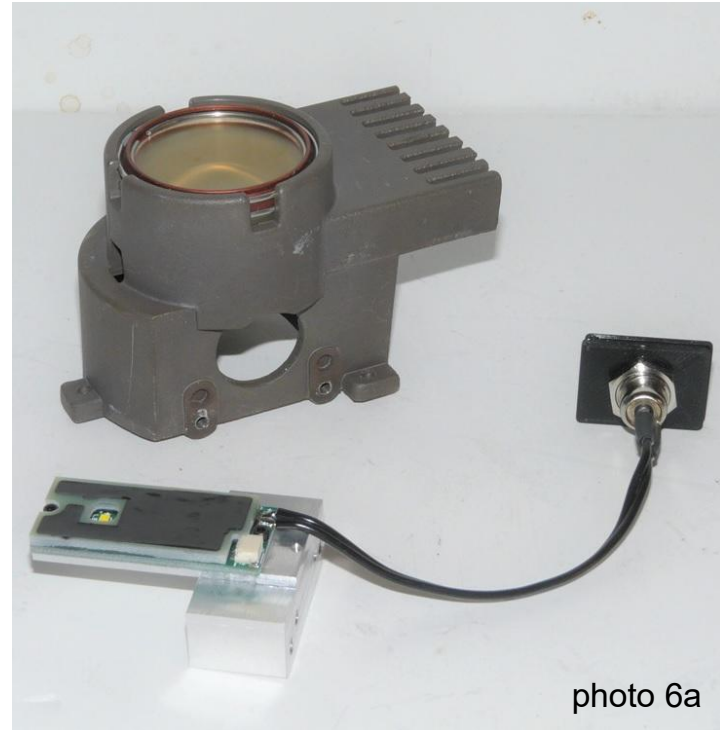
Re-install the potentiometer mounting bracket using original screws.



A

Han-Seung Yang		11/23/2020	
PN 11819 Leica DM1000 Illuminator System Installation Instruction		REV 1	
		SHEET 6	OF 11

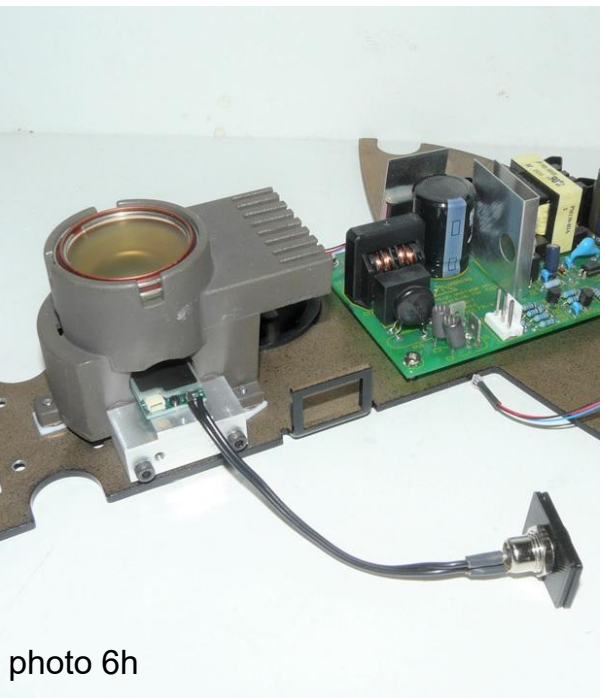
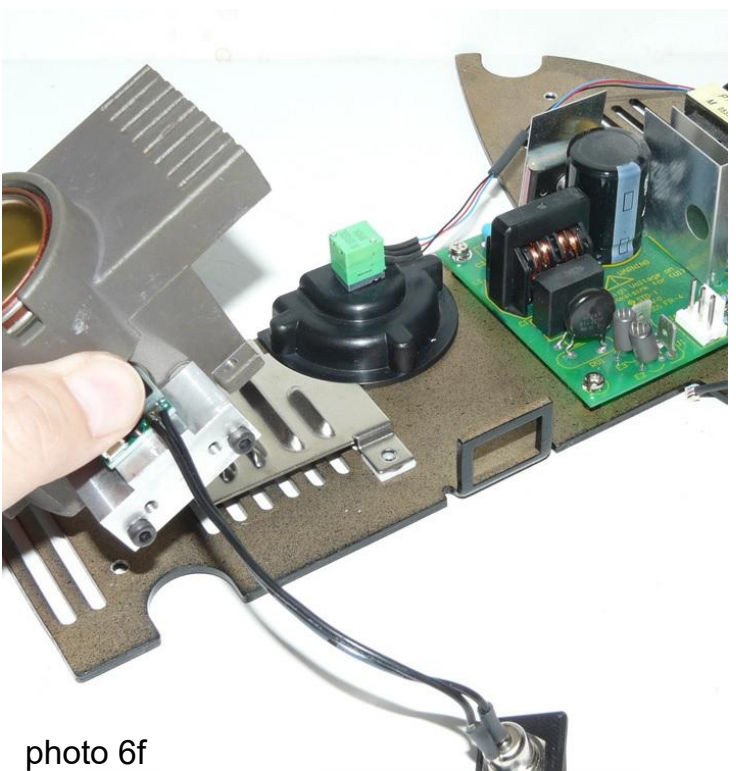
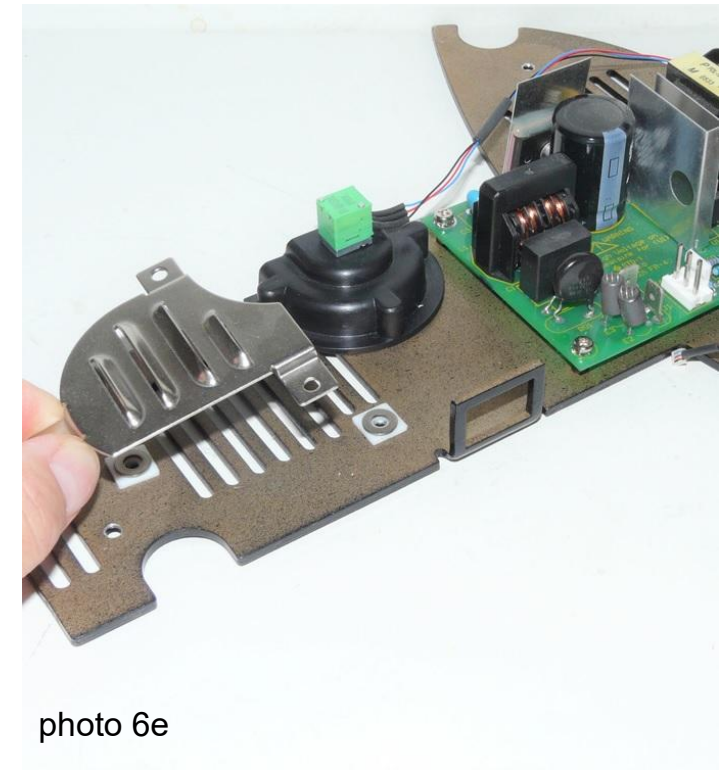
Nanodyne Replacement Illuminator for Leica DM1000 Microscope Installation Instructions: Step 6. Mount Nanodyne illuminator assembly on the original lamp housing.



Insert and install the Nanodyne illuminator assembly using M3 screws provided.

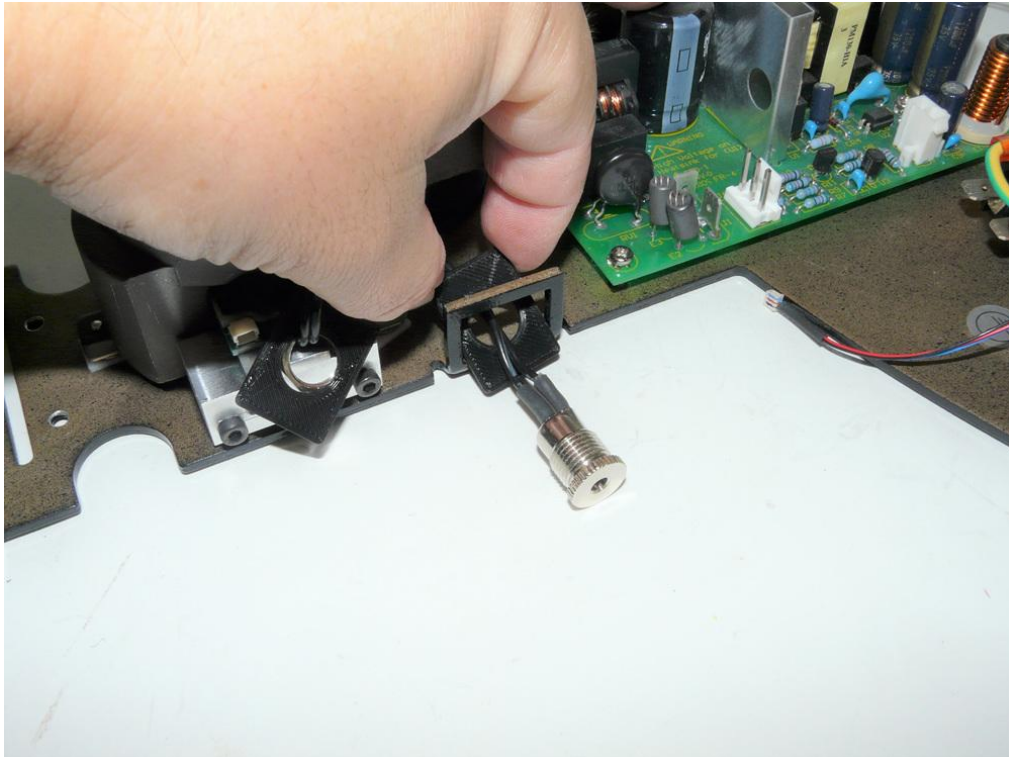
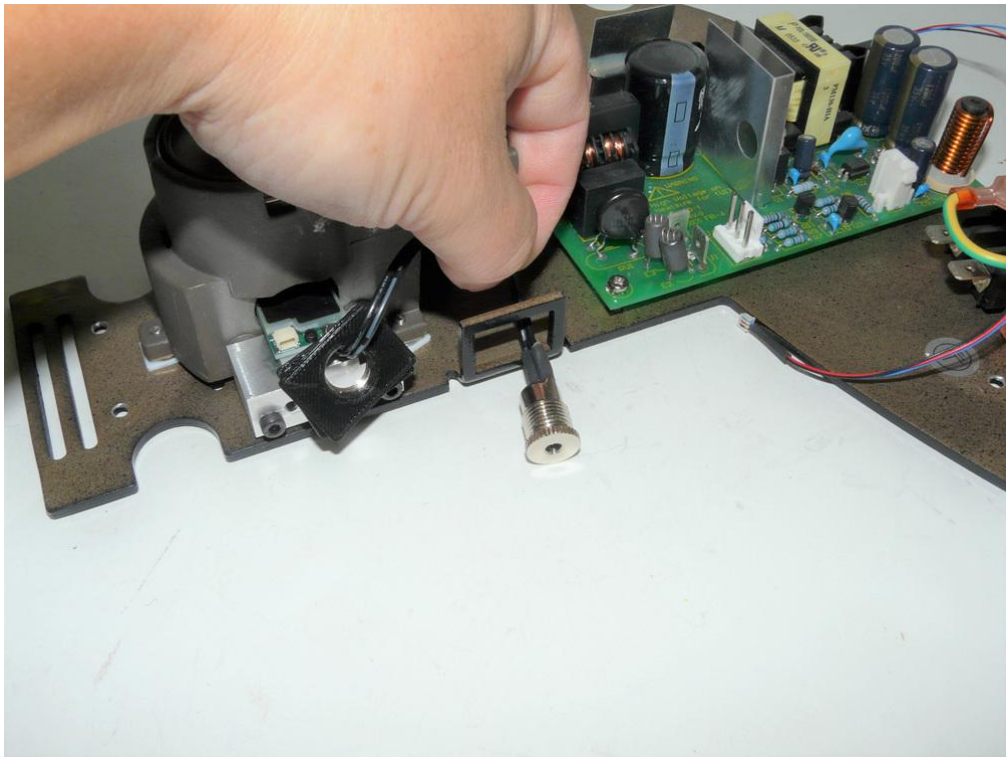
Put the original spacers and washers back in place.

Note: If you did not remove the original lamp housing, skip photos 6d to 6g.



Attach the metal bracket and lamp housing as it was removed, using the original screws.

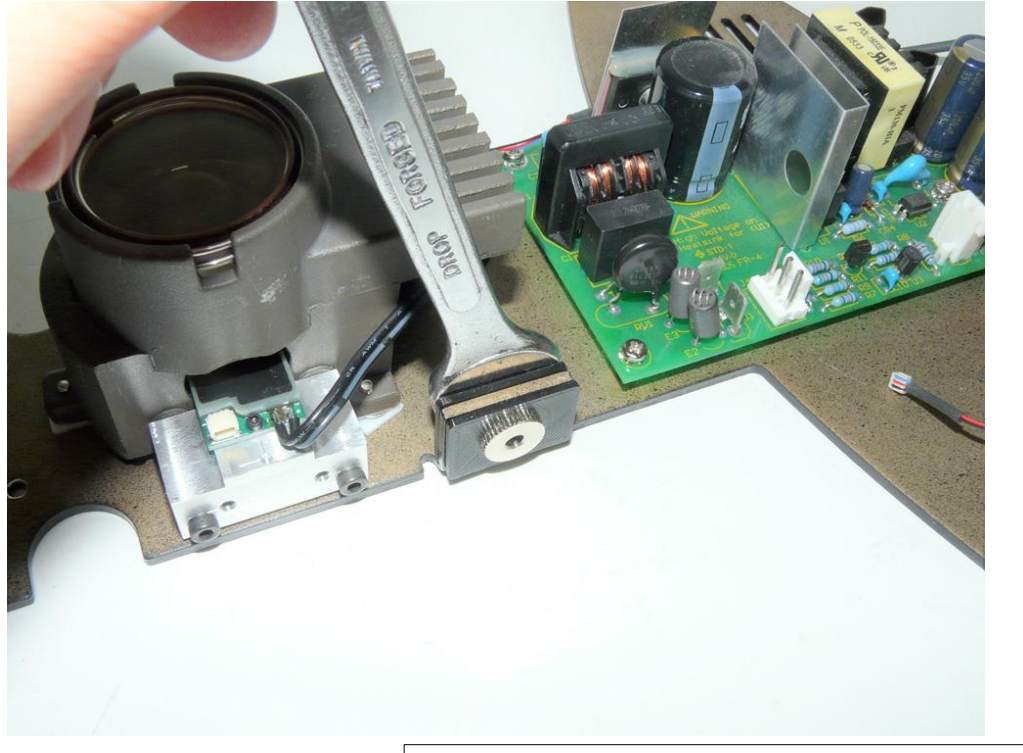
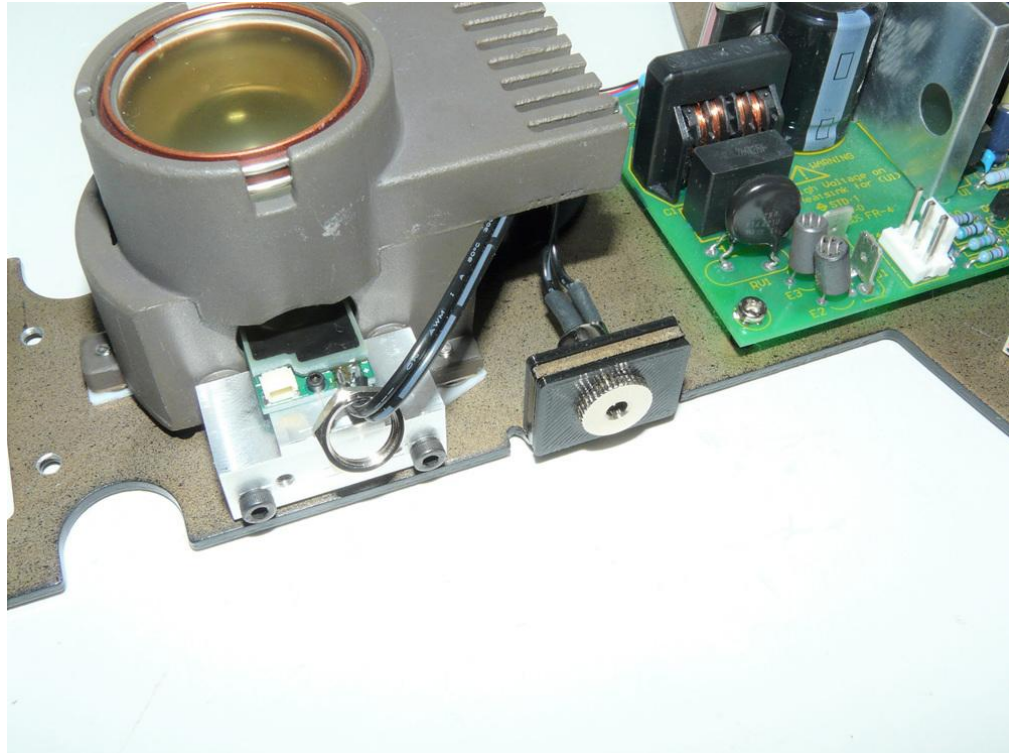
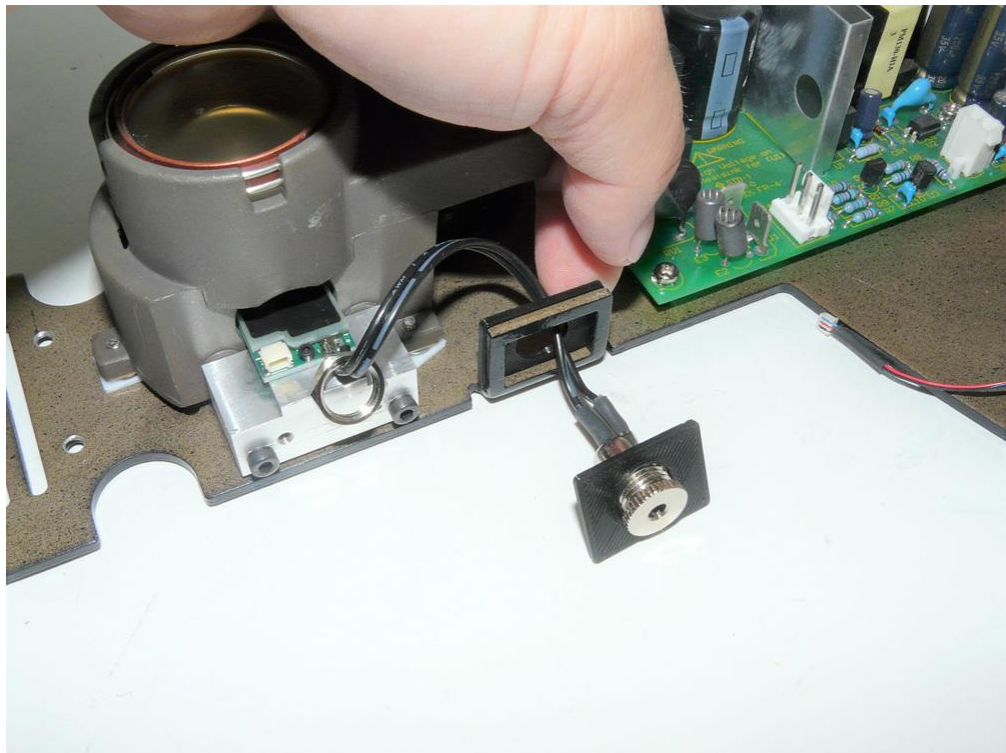
B



B

Guide the power jack and power plate outside piece through the old AC power switch hole as shown above.

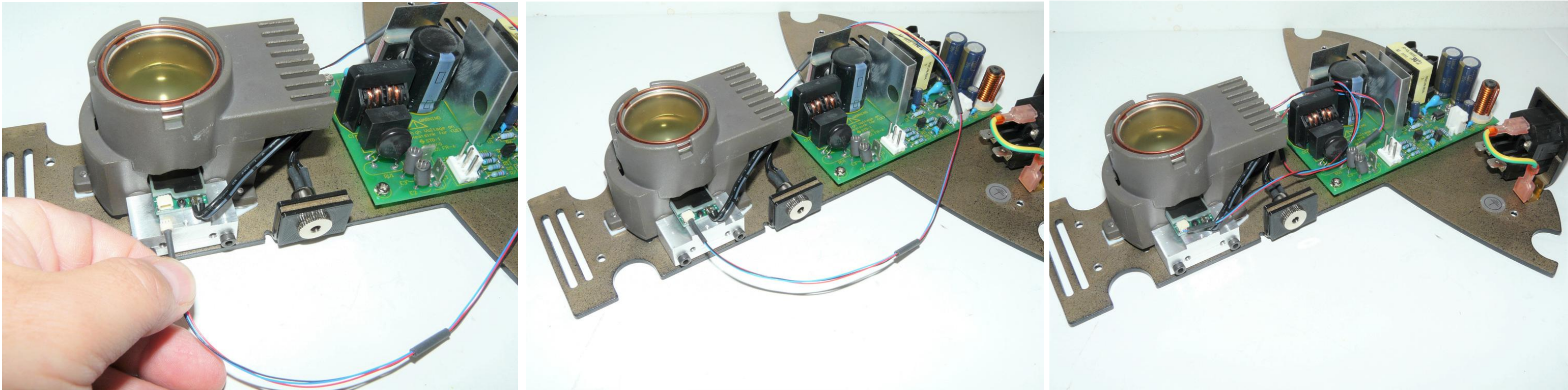
A



A

Line up the power plate (on the inside), and another plate (on the outside) with the AC power switch hole on the microscope frame. Then thread the nut onto the silver metal power jack and tighten it by hand. Verify that both plates are properly aligned with the nut finger tight. Then finish tightening with a wrench, just enough to secure them. Don't over-do it.

Nanodyne Replacement Illuminator for Leica DM1000 Microscope Installation Instructions: Step 8. Connect new pot cable and install side cover.



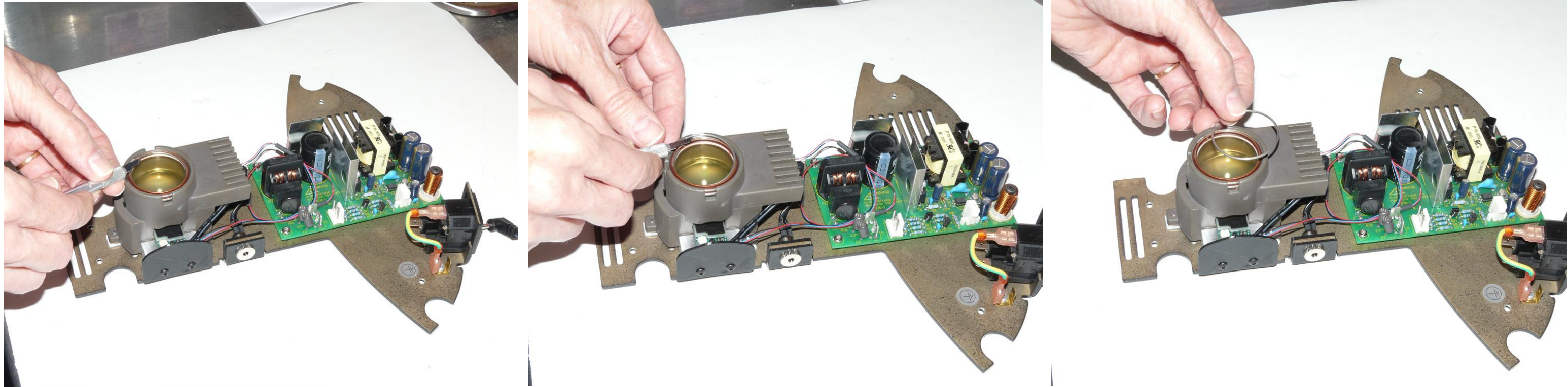
Connect the potentiometer cable to the illuminator. The connector is keyed to go in one way as shown above. If it doesn't fit, do not force it but turn 180 degree. Fully inserting the connector to engage the electrical contacts needs more force than the wires can support. Use your fingernail, or a tiny screwdriver or tweezers.

Organize wires, use 3M VHB tapes provided if needed.

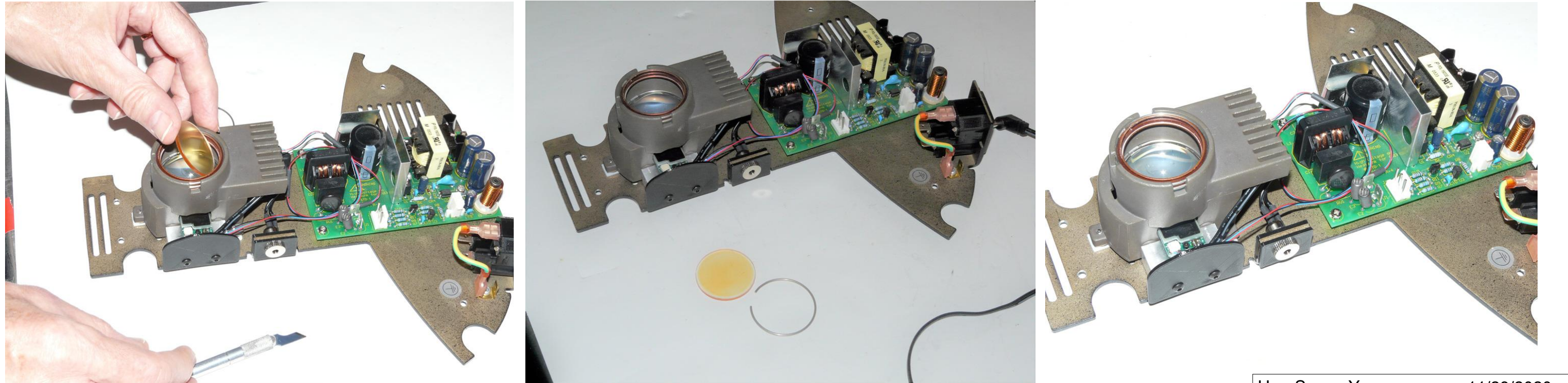


Assemble microscope base and upper frame (not shown in the photos), then install side cover using M3 button head screws provided.

Nanodyne Replacement Illuminator for Leica DM1000 Microscope Installation Instructions: Step 9. Remove a filter (if desired, otherwise skip this step).



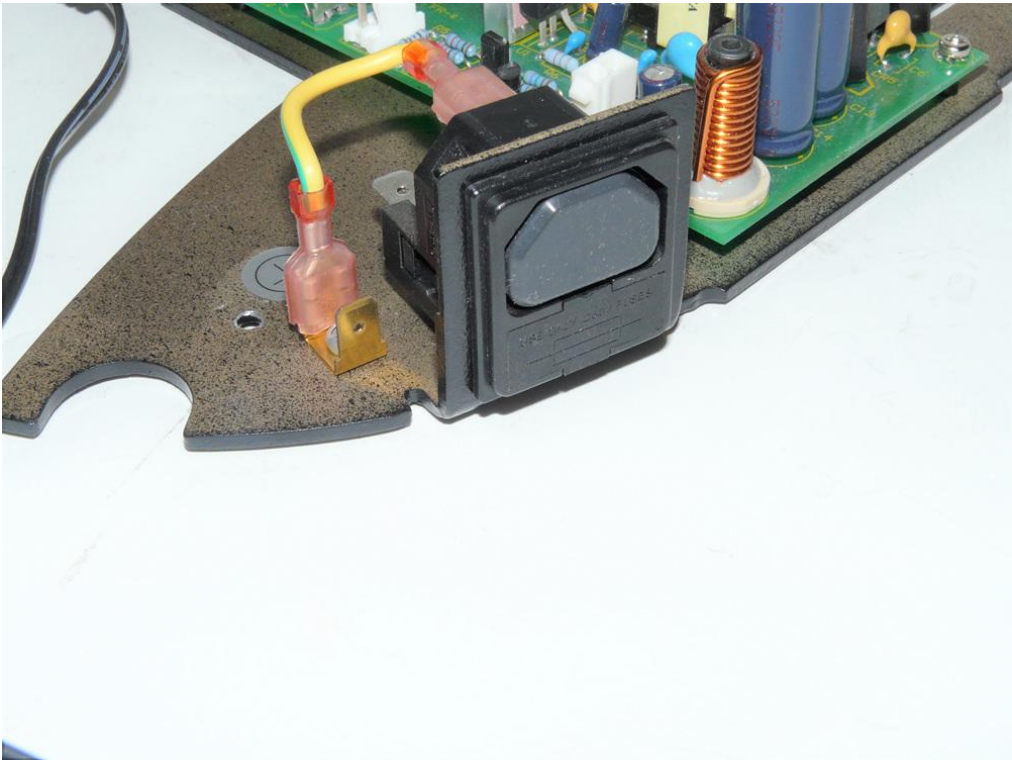
If you want to discard aged or discolored filter unit, remove the round clip holding the filter using fingernail, or a tiny screwdriver or tweezers.



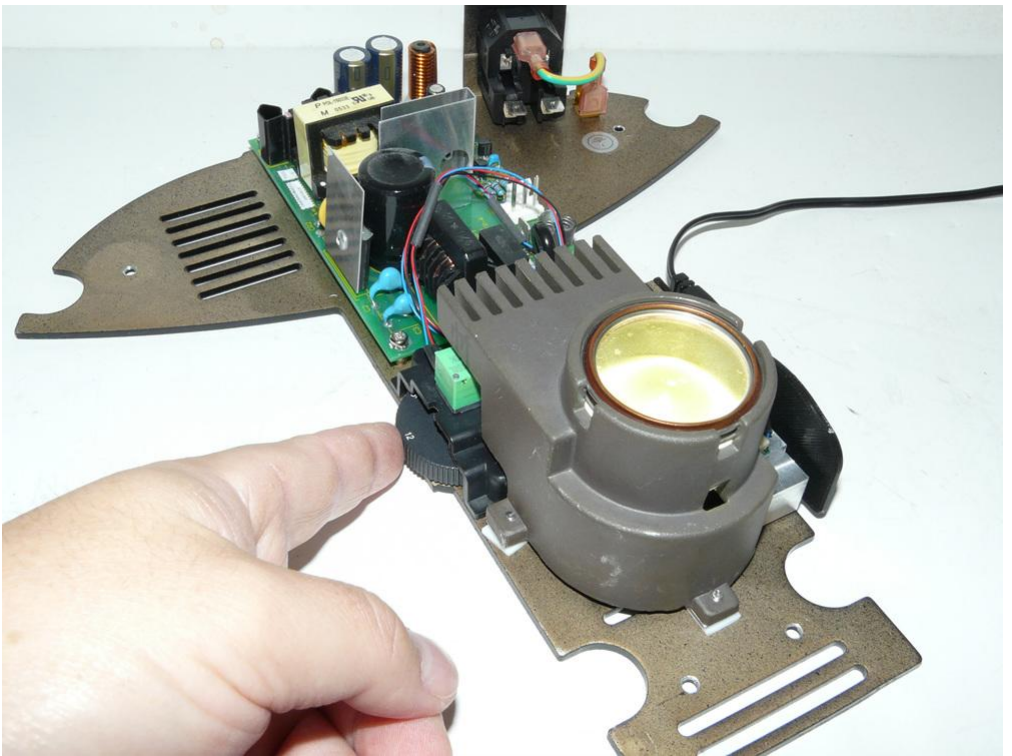
Remove the filter.

Metal clip and heat damaged filter completely removed.

Nanodyne Replacement Illuminator for Leica DM1000 Microscope Installation Instructions: Step 10. Connect the Power Supply.



Install PN 10736 rubber plug in AC receptacle to deter connection of AC power.



Connect the power supply to complete the illuminator installation.

Plug the USB end into the power supply. Plug the power supply into an AC outlet. Now it is ready to use.